



# Service Bulletin


Bulletin No.: 18-NA-346

Date: April, 2022

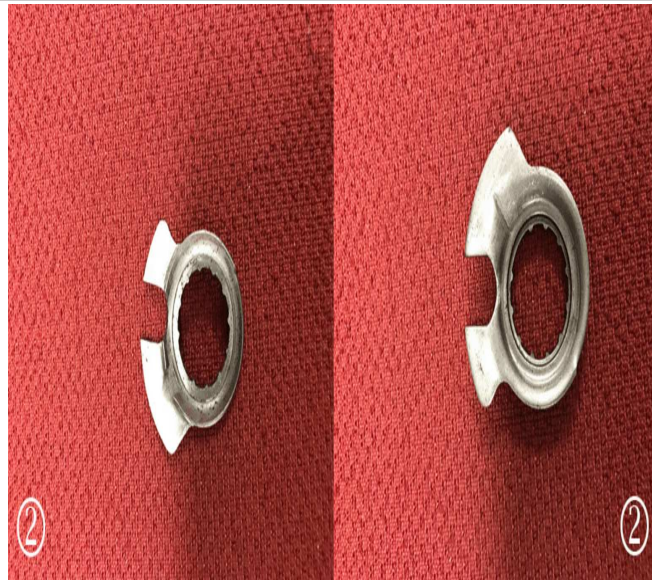
## TECHNICAL

**Subject: Vehicle Will Not Start and/or Service Electronic Steering Column Lock System Message Displayed on Driver Information Center (DIC)**

Brand:	Model:	Model Year:		Breakpoint:		Engine:	Transmission:
		from	to	from	to		
Chevrolet	Corvette	2005	2005	—	—	—	6-Speed Manual (RPO MM6)

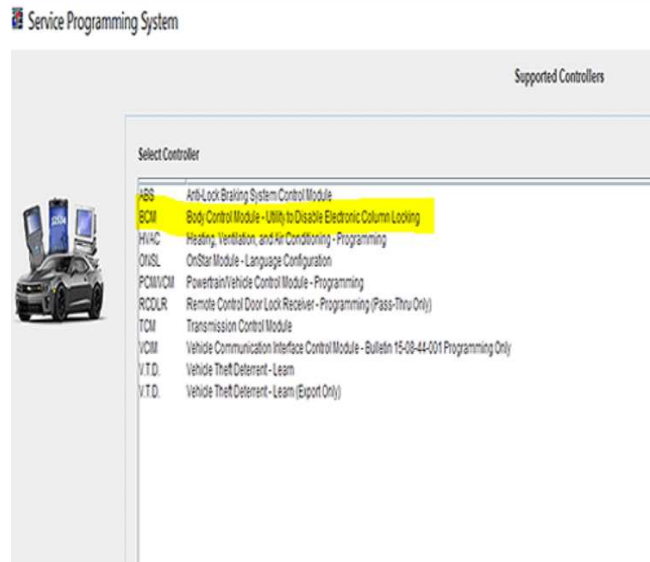
<b>Involved Region or Country</b>	North America, Middle East ( <b>Japan and Europe countries are EXCLUDED from this bulletin.</b> )
<b>Condition</b>	Some customers may comment on the vehicle not starting and/or a Service Electronic Steering Column Lock System message being displayed on the driver information center (DIC). <b>Note:</b> The steering wheel may not turn when this condition occurs.
<b>Cause</b>	This condition may be caused by the electronic steering column module failing to send the correct signal to the body control module (BCM).
<b>Correction</b>	

5161785

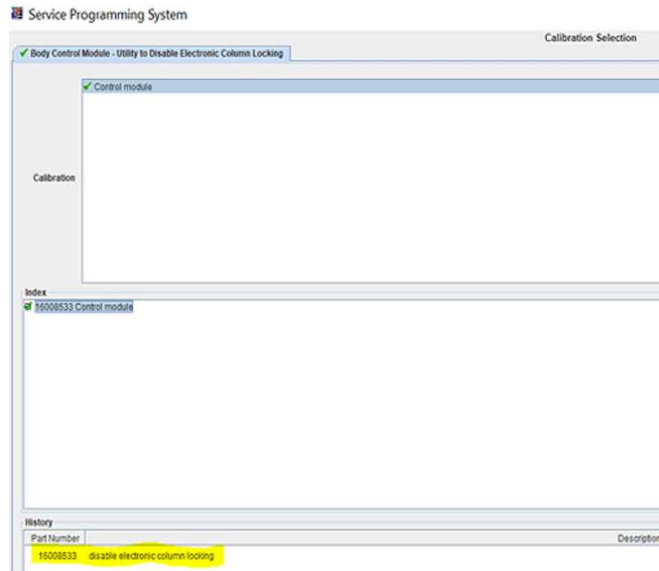


5161786

Replace the steering column lock plate (1) with the new plate (2), and update the BCM with the new utility file.



5163620



5163621



5163625

The technician needs to electrically disable the electric steering column lock in the SPS menu.

**Important:** MUST use J-23653–SIR and J-42137 when installing the cam orientation plate and retaining ring. Failure to use these tools may result in damage to the cam orientation plate, retaining ring and/or steering column components.

**Note:** DO NOT reuse the original retaining ring.

**Note:** The customer needs to be informed that the locking feature will no longer work after the new plate has been installed.

## Parts Information

Causal Part	Description	Part Number	Qty
X	PLATE, T/SIG SW CANC CAM POSN (W/ SHIELD)	26049186	1
—	RING, STRG SHF LK PLT RET	05694191	1

## Warranty Information

Dealership personnel will need to inform the customer that this repair is **NOT** covered under warranty.

Version	2
Modified	Released November 14, 2018 April 21, 2022 – Removed supersede statement and added excluded countries statement to Involved Region or Country section.

