



HYUNDAI Technical Service Bulletin

GROUP CAMPAIGN	NUMBER 22-01-027H
DATE MARCH 2022	MODEL(S) ELANTRA N (CN7 N)

SUBJECT: CN7 N MANUAL TRANSMISSION CLUTCH DISC INSPECTION AND REPAIR (SERVICE CAMPAIGN T8B)

* IMPORTANT

*** Dealer and Retail Vehicles ***

Dealers must perform this service campaign on all affected vehicles prior to customer retail delivery and whenever an affected vehicle is in the shop for any maintenance or repair.


When a vehicle arrives at the Service Department, access the "Vehicle Information" screen via WEBDCS to identify open Campaigns.

Description: Certain Elantra N (CN7 N) vehicles may have been produced with the clutch disc installed in the reverse direction, potentially causing premature wear due to less clearance between the disc and pressure plate. This bulletin outlines the procedures to inspect the clutch disc, and if necessary, repair the condition.

Applicable Vehicles:

Certain 2022 Elantra N (CN7 N) vehicles equipped with manual transmissions and produced before 12/6/2021.

SST Information:

PART NAME	PART NUMBER	FIGURE	REMARK
CLUTCH DISC GUIDE	09411-1P000		Use to guide the clutch disc into place.

NOTE: If additional SST is needed, replacement parts can be ordered from Bosch at (866) 539-4248.

Warranty Information:

MODEL	OP CODE	OPERATION	OP TIME	CAUSAL PART	NATURE CODE	CAUSE CODE
Elantra N (CN7 N)	10D232R0	Manual Transmission Clutch Disc Inspection	3.2 M/H	41200-24050	B11	ZZ7
	10D232R1	Manual Transmission Clutch Disc Inspection and Repair	3.3 M/H	41200-24050		

NOTE 1: Submit claim on campaign claim entry screen,

NOTE 2: If a part that is not covered by this campaign is in need of replacement while performing this campaign, and the affected part is still under warranty, please submit a separate claim using the same repair order. If the part is out of warranty, submit a prior approval request for goodwill consideration prior to performing the work.

Circulate To: General Manager, Service Manager, Parts Manager, Warranty Manager, Service Advisors, Technicians, Body Shop Manager, Fleet Repair

Inspection Procedure:

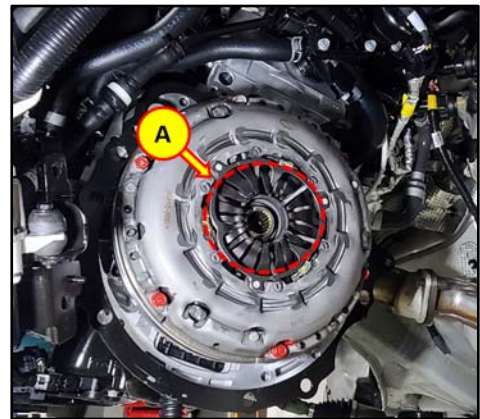
1. Remove the manual transmission assembly.

Refer to the shop manual for the complete manual transmission removal procedure:

Manual Transaxle System > Manual Transaxle System > Manual Transaxle > Repair Procedures



2. Inspect the clutch disc (A) for "T/M SIDE" markings.



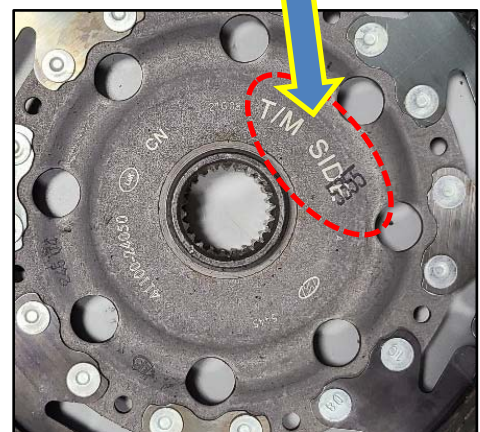
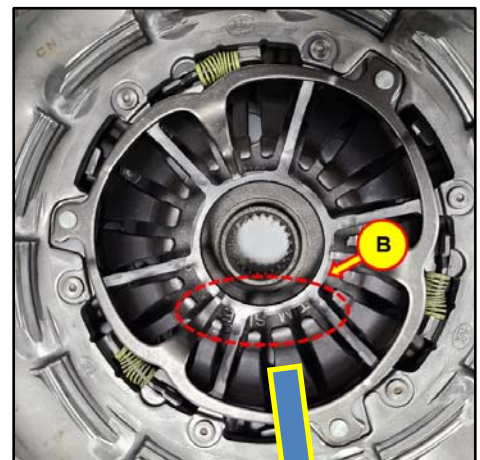
3. If the "T/M SIDE" (B) is visible, the clutch disc is installed correctly and no further repair is needed.

Reinstall transmission in the reverse order of removal.

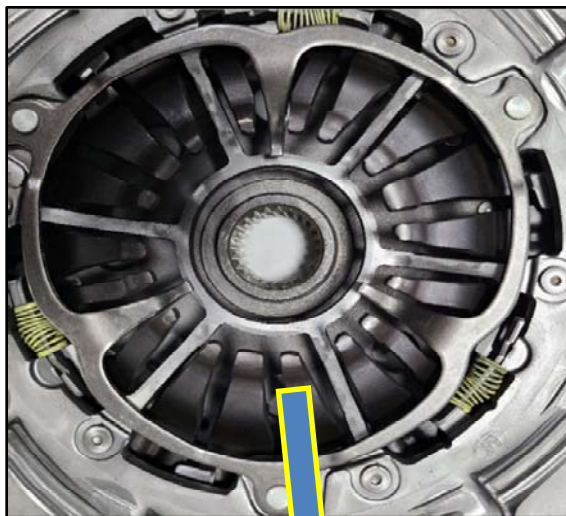
NOTICE

Perform slave cylinder bleeding to complete the service procedure.

**Refer to the shop manual for the complete procedure:
Clutch System > Clutch System > Repair Procedures**



4. If 'T/M SIDE' marking (C) is not visible, continue with the service procedure below.

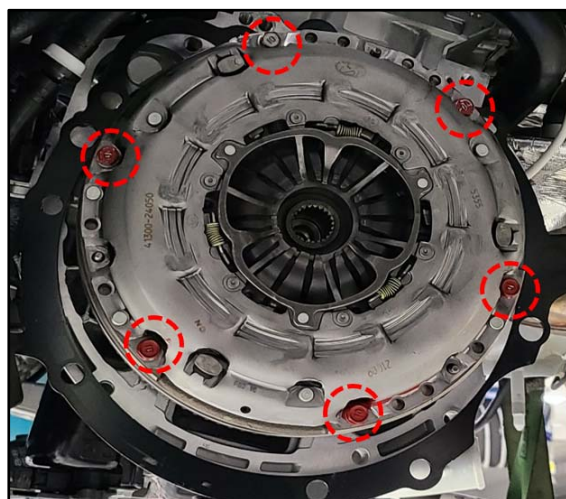


Service Procedure:

1. Loosen the mounting bolts, outlined in the figure, and remove the clutch disc and cover.

NOTICE

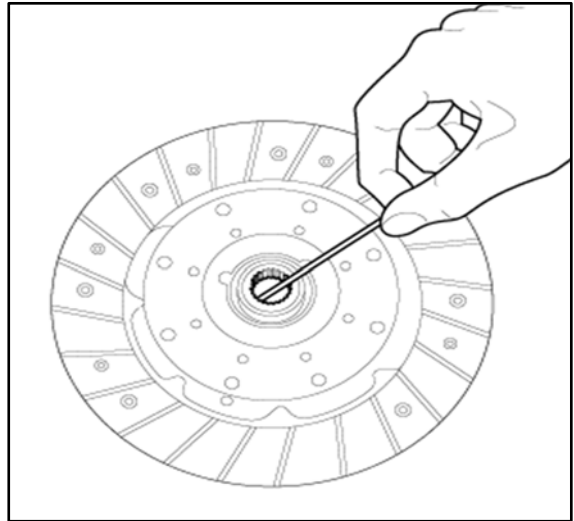
Tightening Torque:
18.1 – 26.0 lb-ft (24.5 – 35.3 Nm)



2. Apply grease on the disc spline and the transmission input shaft spline.

NOTICE

Be careful not to apply excessive grease as rotational movement will spread the grease onto the clutch disk and cause slipping to occur.



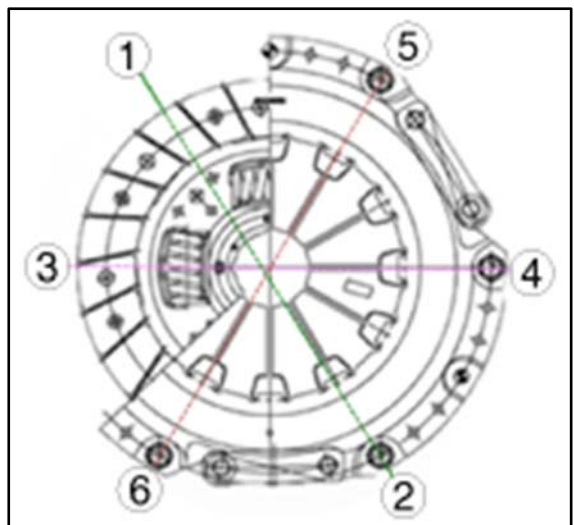
3. Use clutch disc guide (SST: 09411-1P000) to reinstall the clutch disc so "T/M SIDE" is visibly facing out when installed.



4. Evenly tighten the bolts in the specified pattern according to the figure to the right.

NOTICE

Tightening Torque:
18.1 – 26.0 lb-ft (24.5 – 35.3 Nm)



5. Reinstall parts in reverse order of removal.

NOTICE

Perform slave cylinder bleeding to complete the service procedure.

**Refer to the shop manual for the complete procedure:
Clutch System > Clutch System > Repair Procedures**

6. The service procedure is complete.