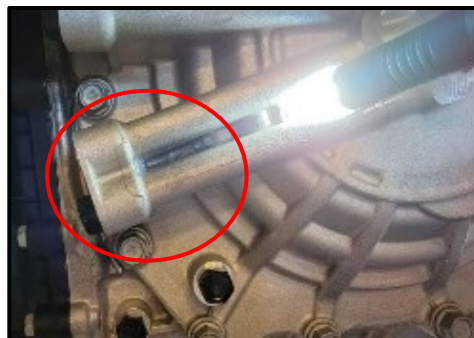
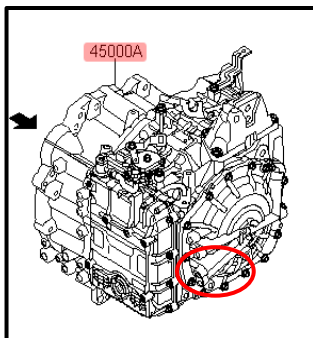
 <b>HYUNDAI</b> <b>Technical Service Bulletin</b>	<b>GROUP</b> <b>AUTOMATIC TRANSMISSION</b>	<b>NUMBER</b> <b>22-AT-002H</b>
	<b>DATE</b> <b>MARCH, 2022</b>	<b>MODEL</b> <b>SONATA (DN8A)</b> <b>SANTA FE (TMA)</b> <b>TUCSON (NX4A)</b>
<b>SUBJECT:           AUTOMATIC TRANSAXLE ATF LEAK AT REAR COVER</b>		

***This TSB supersedes TSB 21-AT-017H to require a photo of the ATF leak.***

**DESCRIPTION:** Certain vehicles equipped with 8-speed automatic transmission may experience an automatic transmission fluid (ATF) leak at the rear cover. This type of leak is caused by a porous casting on the rear cover of the transmission.

If you are servicing an affected vehicle listed below with an ATF leak as described, follow the Service Procedure below.



**APPLICABLE MODELS:**

Certain 2021 Sonata (DN8a) 1.6T/2.5L	Manufactured from September 1, 2020 to August 17, 2021
Certain 2021 Santa Fe (TMA) 2.5L	Manufactured from October 30, 2020 to August 16, 2021
Certain 2022 Tucson (NX4a) 2.5L	Manufactured from February 3, 2021 to August 16, 2021

**PARTS INFORMATION:**

Model	Transmission	Drivetrain	ATM Type	Part Number
Sonata (DN8a)	1.6T	2WD	8AT Smartstream	45000-4G621
	2.5L	2WD	8AT Smartstream	45000-4G610
	2.5L	2WD	8AT Smartstream	45000-4G611
Santa Fe (TMA)	2.5L	2WD	A8MF1	45000-4GDX0
	2.5L	4WD	A8MF1	45000-4GDX5
Tucson (NX4a)	2.5L	2WD	A8MF1	45000-4GDM0 45000-4GDN0
	2.5L	4WD	A8MF1	45000-4GDM5
				45000-4GDN5

## WARRANTY INFORMATION:

Model	Op Code	Operation	Op Time	Causal Part	Nature Code	Cause Code
Sonata (DN8a) 1.6T	10DA28R0	Auto transmission assy.	3.6 M/H	45000-4G621	T83	ZZ3
Sonata (DN8a) 2.5L	10DA28R1		3.6 M/H	45000-4G610 45000-4G611		
Santa Fe (TMa) 2WD	10DA28R2		3.5 M/H	45000-4GDX0		
Santa Fe (TMa) 4WD	10DA28R3		3.8 M/H	45000-4GDX5		
Tucson (NX4a) 2WD	10DA28R4 10DA28R6		3.3 M/H	45000-4GDM0 45000-4GDN0		
Tucson (NX4a) 4WD	10DA28R5		3.5 M/H	45000-4GDM5 45000-4GDN5		

**NOTE 1:** Submit Claim on Campaign Claim Entry Screen.

**NOTE 2:** If a part that is not covered by this TSB is found in need of replacement while performing the repair for this TSB and the affected part is still under warranty, submit a separate claim using the same Repair Order. If the affected part is out of warranty, submit a prior approval request for goodwill consideration prior to performing the work.

## SERVICE PROCEDURE:

1. If the transmission is leaking from the rear cover near the black pressure port check plug, go to Step 2 and take a photo of the leak and send to the Techline Repository.

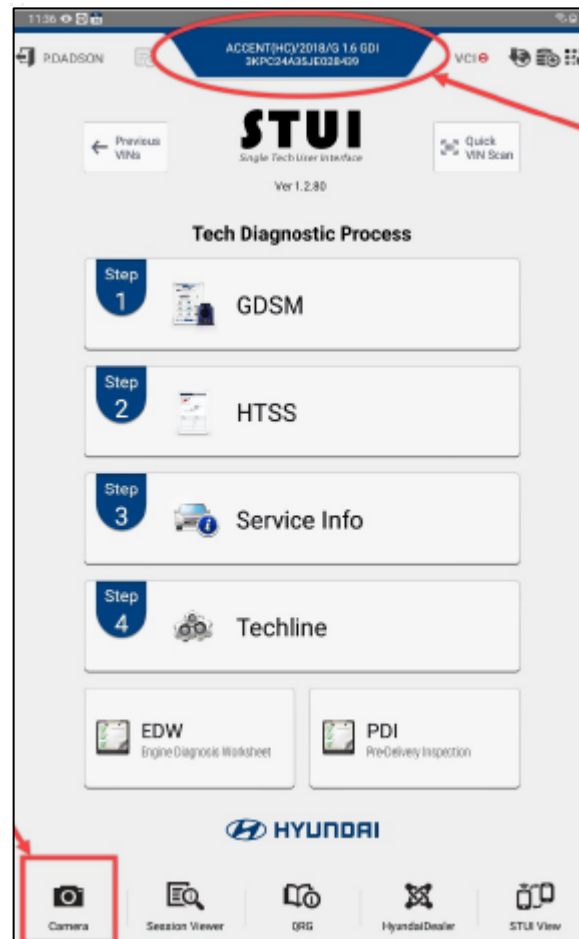
**NOTICE**

DO NOT replace the rear cover of the automatic transaxle. The rear cover controls the end-play on the disk set and clutch pack. If the selectable spacers are not changed to correct the end play for the new rear cover, the durability of the transmission could be affected.



2. **To send a photo to the Techline Repository using GDS Mobile:**

- A. From the GDS home page, select **GDS**. **STUI** will open.  
Confirm the VIN at the top of **STUI** is correct.  
If the VIN is not correct, attach the VCI to the vehicle. Select **Fault Code Searching**. Select **OK** to connect the VCI to STUI. When the correct VIN is displayed, select **OK**.  
Select the **Camera** icon on the lower left.
- B. Select **Add New**.
- C. Select **Take a Photo**. Take a photo of the ATF leak on the rear cover.
- D. Review the photo. Select **Save**.
- E. Select **Submit** to send the photo to Techline.
- F. Wait for the upload to complete. Select **Retrieve** to verify the uploaded image so PA can review the photo once the Prior Approval (PA) for the transmission is submitted.



**NOTE:** Additional instructions are posted on [hyundaitechinfo.com](http://hyundaitechinfo.com). Select **Diagnostic Tools**, **GDSM** and **STUI Tips** and **Capturing video and photos for Techline and PA using the STUI Camera**.

No.		Date	Subject
652	12/20/2021	GDSM BATTERY DIAGNOSIS TEST INFORMATION	
649	11/02/2021	WINDOWS 11 SUPPORT	
647	09/21/2021	SCREENSHOT FUNCTIONS ON SAMSUNG TABLETS	
643	08/30/2021	CAPTURING VIDEO AND PHOTOS FOR TECHLINE AND PA USING THE STUI CAMERA	

- 3. After the PA is approved, replace the automatic transaxle according to the applicable vehicle shop manual.