

# Technical product information

<b>Topic</b>	P245000 - EVAP System Switching Valve "A" Performance/Stuck Open DTC logged - Bentayga V8 Kovomo
<b>Market area</b>	China 796 VW Import Comp. Ltd (Vico), Beijing (6796),United States E05 Bentley USA and rest America (6E05)
<b>Brand</b>	Bentley
<b>Transaction No.</b>	2063657/2
<b>Level</b>	EH
<b>Status</b>	Approval
<b>Release date</b>	

## Event memory entries

Diagnostic address	Event memory entry	Fault type	Fault status
0001 - Engine electronics	P245000: EVAP System Switching Valve "A" Perfomance/Stuck Open		Intermittent
0001 - Engine electronics	P245000: EVAP System Switching Valve "A" Perfomance/Stuck Open		static

## New customer code

Object of complaint	Complaint type	Position
vehicle service -> vehicle diagnosis -> guided fault finding	control units, services -> with event log entry	
electrical power, electric system, data transfer -> power supply	electrics	
engine -> operation, engine control -> engine control unit	control units, services -> error message	

# Vehicle data

## Bentayga - V8 Kovomo

### Sales types

Type	MY	Brand	Designation	Engine code	Gearbox code	Final drive code
4V14D9	2019	E		*	*	*
4V14D9	2020	E		*	*	*
4V14D9	2021	E		*	*	*

# Documents

Document name
<a href="#">master.xml</a>

## Customer statement / workshop findings

### Customer Statement

Emission control system warning light illuminated within the DIP (Figure 1)



Figure 1

### Workshop findings

DTC P245000 - EVAP System Switching Valve "A" Performance/Stuck Open - With symptom code 11952

### Revision history

Additional request has been included within the Measure section (step 4) to inspect the leak detection pump (LDP) for impact damage (if removed)

### Technical background

Refer to the Measure section of this TPI

### Production change

Not applicable

### Measure

Fuel System vapours are extremely flammable. Please refer to the Repair manual "Fuel system - Safety precautions" before commencing with any fuel system procedures

- 1) Referring to the applicable wiring diagram conduct a wiring integrity check of the Leak Detection Pump wiring circuit and connectors
- 2) Perform a smoke test of the leak detection system - Monitor for any leaks
- 3) If no faults were found - Refer to Rep.Gr 20 - Replace the leak detection pump (V144)
- 4) Inspect the LDP for impact damage when extracted, the operative must provide feedback and photographic evidence (see example shown in Figure 2) via a new or existing DISS query

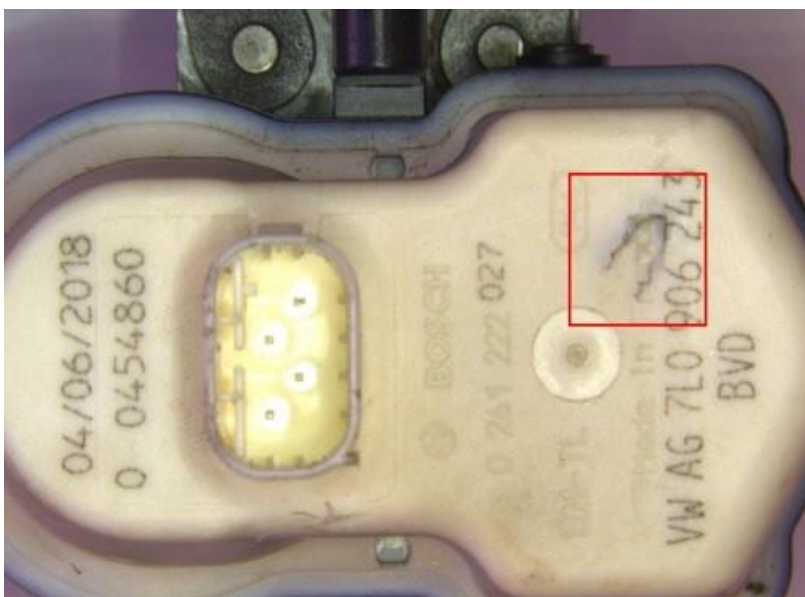


Figure 2

### Warranty accounting instructions

WarrantyType	910 or 110
Damage service number	20 48
Damage code	00 17

### Time to replace the leak detection pump

Labour Operation Code 2048 1900

Time 30 Time units

### Wiring check

Labour Operation Code 97090199

Time 50 Time units

### Smoke test

Labour Operation Code 20480100

Time 50 Time units

### Parts information

Refer to the ETKA parts catalogue