

**FT5198R1 Water Inside Roof Fuse Box (MQR 7621-2374)**

Technical writer name / nom rédacteur technique: André Pelletier

Manual/manuel, section: 9

Level 1 Parts, description	Part # / # de pièce	QTY / Qté
n/a	n/a	n/a

Labour level 1 / main d'oeuvre niveau 1	0.5h
---	------

MQR	7621-	2374
-----	-------	------

Special Tooling	Part # / # de pièce	QTY / Qté
30 cc Taper Tip Dispensing Syringe	N8950810	10 (approx 3 per depot)

Labour level 2 / main d'oeuvre niveau 2	1h
---	----

Disposal of parts / disposition des pièces

Shop Supplies	Part # / # de pièce	QTY / Qté
GREASE DIELECTRIC	N77489	20 gr / bus

Removed parts are / les pièces retirées sont:		When the retained check box is checked, the parts must be retained and returned in accordance with the usual warranty procedure to be reimbursed / Pour être remboursées, les pièces doivent être conservées et retournées selon le processus de garantie habituel.
Discarded / jetées	Retained/conservées	
x		

Client	Order	Road numbers	VIN	QTY (total 146)	NR	R1
New York City Transit New York - NYCT	LC79	9623	4RKYL82L1M9777782	1		x
New York City Transit New York - NYCT	LC79	9624	4RKYL82L3M9777783	1	x	x
New York City Transit New York - NYCT	LC79	9625	4RKYL82L5M9777784	1	x	x
New York City Transit New York - NYCT	LC79	9626	4RKYL82L7M9777785	1	x	x
New York City Transit New York - NYCT	LC79	9627	4RKYL82L9M9777786	1	x	x
New York City Transit New York - NYCT	LC79	9628	4RKYL82L0M9777787	1	x	x
New York City Transit New York - NYCT	LC79	9636	4RKYL82LXM9777795	1	x	x
New York City Transit New York - NYCT	LC79	9637	4RKYL82L1M9777796	1	x	x
New York City Transit New York - NYCT	LC79	9639	4RKYL82L5M9777798	1	x	x
New York City Transit New York - NYCT	LC79	9644	4RKYL82L5M9777803	1	x	x
New York City Transit New York - NYCT	LC79	9648	4RKYL82L2M9777807	1	x	x
New York City Transit New York - NYCT	LC79	9650	4RKYL82L6M9777809	1	x	x
New York City Transit New York - NYCT	LC79	9652	4RKYL82L4M9777811	1	x	x
New York City Transit New York - NYCT	LC79	9653	4RKYL82L6M9777812	1	x	x
New York City Transit New York - NYCT	LC79	9654	4RKYL82L8M9777813	1	x	x
New York City Transit New York - NYCT	LC79	9656	4RKYL82L1M9777815	1	x	x
New York City Transit New York - NYCT	LC79	9657	4RKYL82L3M9777816	1	x	x
New York City Transit New York - NYCT	LC79	9658	4RKYL82L5M9777817	1	x	x
New York City Transit New York - NYCT	LC79	9659	4RKYL82L7M9777818	1	x	x
New York City Transit New York - NYCT	LC79	9660	4RKYL82L9M9777819	1	x	x
New York City Transit New York - NYCT	LC79	9661	4RKYL82L5M9777820	1	x	x
New York City Transit New York - NYCT	LC79	9662	4RKYL82L7M9777821	1	x	x
New York City Transit New York - NYCT	LC79	9663	4RKYL82L9M9777822	1	x	x
New York City Transit New York - NYCT	LC79	9664	4RKYL82L0M9777823	1	x	x
New York City Transit New York - NYCT	LC79	9665	4RKYL82L2M9777824	1	x	x
New York City Transit New York - NYCT	LC79	9666	4RKYL82L4M9777825	1	x	x
New York City Transit New York - NYCT	LC79	9667	4RKYL82L6M9777826	1	x	x
New York City Transit New York - NYCT	LC79	9668	4RKYL82L8M9777827	1	x	x
New York City Transit New York - NYCT	LC79	9669	4RKYL82LXM9777828	1	x	x
New York City Transit New York - NYCT	LC79	9670	4RKYL82L1M9777829	1	x	x
New York City Transit New York - NYCT	LC79	9671	4RKYL82L8M9777830	1	x	x
New York City Transit New York - NYCT	LC79	9672	4RKYL82LXM9777831	1	x	x
New York City Transit New York - NYCT	LC79	9673	4RKYL82L1M9777832	1	x	x
New York City Transit New York - NYCT	LC79	9674	4RKYL82L3M9777833	1	x	x
New York City Transit New York - NYCT	LC79	9675	4RKYL82L5M9777834	1		x
New York City Transit New York - NYCT	LC79	9676	4RKYL82L7M9777835	1	x	x
New York City Transit New York - NYCT	LC79	9678	4RKYL82L0M9777837	1	x	x
New York City Transit New York - NYCT	LC79	9679	4RKYL82L2M9777838	1		x

Jean-Nicolas  
Fournier

Digitally signed by Jean-Nicolas Fournier  
DN: cn=Jean-Nicolas Fournier, o=Nova  
Bus, email=jean-nicolas.fournier@volvo.com, c=CA  
Date: 2022.02.02 13:07:36 -05'00'



New York City Transit New York - NYCT	LC79	9767	4RKYL82L4M9777937	1	x	x
New York City Transit New York - NYCT	LC79	9768	4RKYL82L6M9777938	1	x	x
New York City Transit New York - NYCT	LC79	9769	4RKYL82L8M9777939	1	x	x
New York City Transit New York - NYCT	LC79	9770	4RKYL82L4M9777940	1	x	x
New York City Transit New York - NYCT	LC79	9771	4RKYL82L6M9777941	1	x	x
New York City Transit New York - NYCT	LC79	9772	4RKYL82L8M9777942	1	x	x
New York City Transit New York - NYCT	LC79	9773	4RKYL82LXM9777943	1	x	x
New York City Transit New York - NYCT	LC79	9774	4RKYL82L1M9777944	1		x
New York City Transit New York - NYCT	LC79	9775	4RKYL82L3M9777945	1	x	x
New York City Transit New York - NYCT	LC79	9776	4RKYL82L5M9777946	1	x	x
New York City Transit New York - NYCT	LC79	9777	4RKYL82L7M9777947	1	x	x
New York City Transit New York - NYCT	LC79	9778	4RKYL82L9M9777948	1	x	x
New York City Transit New York - NYCT	LC79	9779	4RKYL82L0M9777949	1	x	x
New York City Transit New York - NYCT	LC79	9780	4RKYL82L7M9777950	1	x	x
New York City Transit New York - NYCT	LC79	9782	4RKYL82L0M9777952	1	x	x
New York City Transit New York - NYCT	LC79	9783	4RKYL82L2M9777953	1	x	x
New York City Transit New York - NYCT	LC79	9784	4RKYL82L4M9777954	1	x	x
New York City Transit New York - NYCT	LD64	9786	4RKYL82L6M9777955	1		x
New York City Transit New York - NYCT	LD64	9787	4RKYL82L8M9777956	1		x
New York City Transit New York - NYCT	LD64	9789	4RKYL82L1M9777958	1		x
New York City Transit New York - NYCT	LD64	9790	4RKYL82L3M9777959	1		x
New York City Transit New York - NYCT	LD64	9791	4RKYL82L0M9777966	1		x
New York City Transit New York - NYCT	LD64	9792	4RKYL82L2M9777967	1		x
New York City Transit New York - NYCT	LD64	9793	4RKYL82L4M9777968	1		x
New York City Transit New York - NYCT	LD64	9794	4RKYL82L6M9777969	1		x
New York City Transit New York - NYCT	LD64	9795	4RKYL82L2M9777970	1		x
New York City Transit New York - NYCT	LD64	9796	4RKYL82L4M9777971	1		x
New York City Transit New York - NYCT	LD64	9799	4RKYL82LXM9777974	1		x
New York City Transit New York - NYCT	LD64	9800	4RKYL82L1M9777975	1		x
New York City Transit New York - NYCT	LD64	9802	4RKYL82L5M9777977	1		x
New York City Transit New York - NYCT	LD64	9803	4RKYL82L7M9777978	1		x
New York City Transit New York - NYCT	LD64	9805	4RKYL82L5M9777980	1		x
New York City Transit New York - NYCT	LD64	9806	4RKYL82L7M9777981	1	x	x
New York City Transit New York - NYCT	LD64	9807	4RKYL82LXM9777988	1		x
New York City Transit New York - NYCT	LD64	9810	4RKYL82LXM9777991	1		x
New York City Transit New York - NYCT	LD64	9811	4RKYL82L1M9777992	1		x
New York City Transit New York - NYCT	LD64	9812	4RKYL82L3M9777993	1	x	x
New York City Transit New York - NYCT	LD64	9823	4RKYL82L8M9778010	1		x
New York City Transit New York - NYCT	LD64	9828	4RKYL82L7M9778015	1		x
New York City Transit New York - NYCT	LD64	9829	4RKYL82L4M9778022	1	x	x
New York City Transit New York - NYCT	LD64	9830	4RKYL82L6M9778023	1	x	x
New York City Transit New York - NYCT	LD64	9831	4RKYL82L8M9778024	1	x	x
New York City Transit New York - NYCT	LD64	9832	4RKYL82LXM9778025	1	x	x
New York City Transit New York - NYCT	LD64	9837	4RKYL82L3M9778030	1		x
New York City Transit New York - NYCT	LD64	9841	4RKYL82L6M9778040	1		x
New York City Transit New York - NYCT	LD64	9844	4RKYL82L1M9778043	1	x	x
New York City Transit New York - NYCT	LD64	9845	4RKYL82L3M9778044	1		x

# Service Instruction – FOR APPROVAL ONLY

## MQR 7621-2374 Potential Water Intrusion in 24V Fuse Box on Cradle – FT5198

### GENERAL INFORMATIONS

Document	REV	Date	By
MQR 7621-2374	0	03/04/22	AH

Order Affected / Effectivity	Road Number	Customers	QTY
		NYCT	

### SYSTEM and PARTS:

<b>System Name</b>	24V Distribution Fuse Box
<b>Option</b>	409615.XX
<b>Drawing</b>	N/A
<b>Part</b>	N100889

#### Reason for Modification / Background:

- 1) Potential torque missing on the cable gland dome nuts which could lead to water intrusion.
- 2) Potential sealing issue of the fuse box cover which could lead to water intrusion.

### MATERIAL

Item	QTY	PART NO	REV	DESCRIPTION	REPLACES PART N°
LEVEL 1					
1	20mL	N77489	0	GREASE DIELECTRIC NYOGEL 760G	N/A
LEVEL 2					
SHOP SUPPLIES					

SRT	Type	Time
	R&R Level 1	1.25 hour
	R&R Level 2	N/A

### SPECIAL INSTRUCTION / IMPORTANTE NOTICE

No	Tools Needed:	Use:
1	Small torque screwdriver (good for a range of 2Nm) with #3 Philipps head	To torque the fuse box cover screws
2	3/8" drive torque wrench (good for a range of 5-7.5Nm)	To torque cable gland fittings
3	Crowfoot (1-11/16", 1-5/16") – 12-pts offset socket	To torque cable gland fittings
4	Socket adapter 3/8" to 1/2" (to use with item 3)	To torque cable gland fittings
5	Open ended wrench (1-11/16", 1-5/16") – tight clearance form recommended	To torque cable gland fittings
6	Drill bit (13/64") – for steel	To drill hole in bottom of fuse box
7	1" drill bit stopper	To drill hole in bottom of fuse box
8	Nylon brush	To clean electrical terminals, if required
9	Emery cloth	To deburr the drilled holes
10	Shop vacuum	To clean out metal shavings after drilling
11	Water absorbing supplies (paper towel)	To absorb water
12	Torque seal	To apply after torquing

#### Important notices

## DESCRIPTION / WORK INSTRUCTION

**WARNING:** Follow your internal safety procedures

1. Park the vehicle on an even surface with transmission on neutral (N) and apply the parking brake.
2. Before starting any work on the vehicle, make sure that the vehicle is completely and securely stationary.
3. Set the Master Control Switch in the STOP position (see figure 1).
4. Set the batteries disconnect switch in the OFF position.

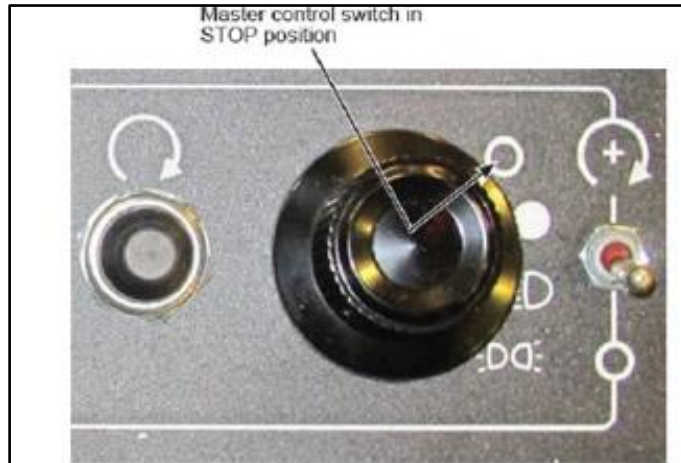


Figure 1: Master Control Switch in STOP position

5. Equip proper fall protection equipment when working on the roof of the bus. Follow your internal safety procedures
6. Open the two canopy doors on the curbside of the bus to locate the 24V fuse box on the cradle of the bus (see figure 2).

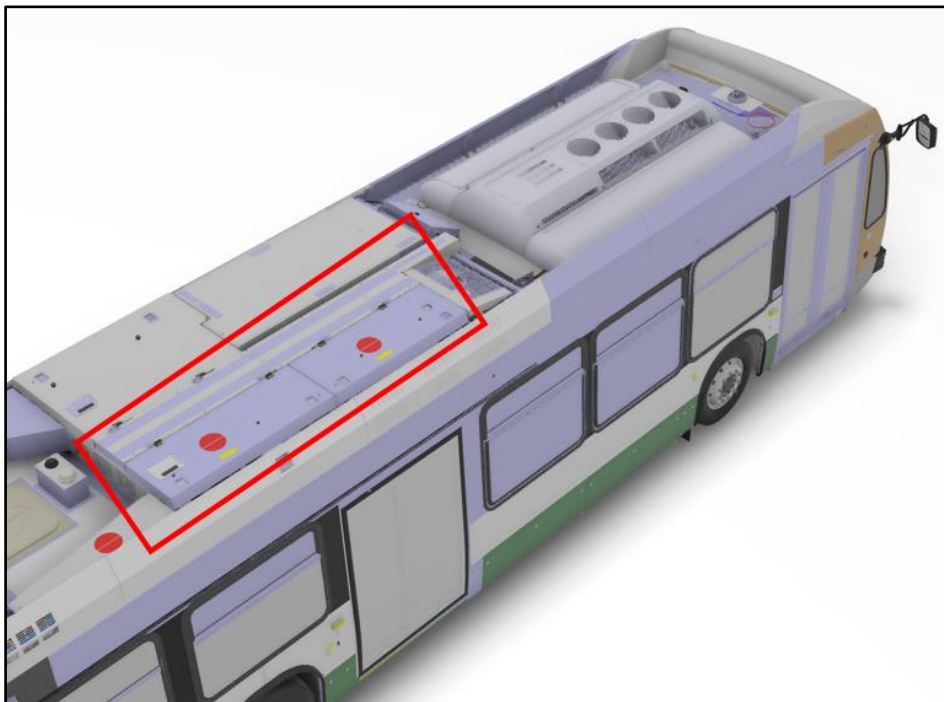
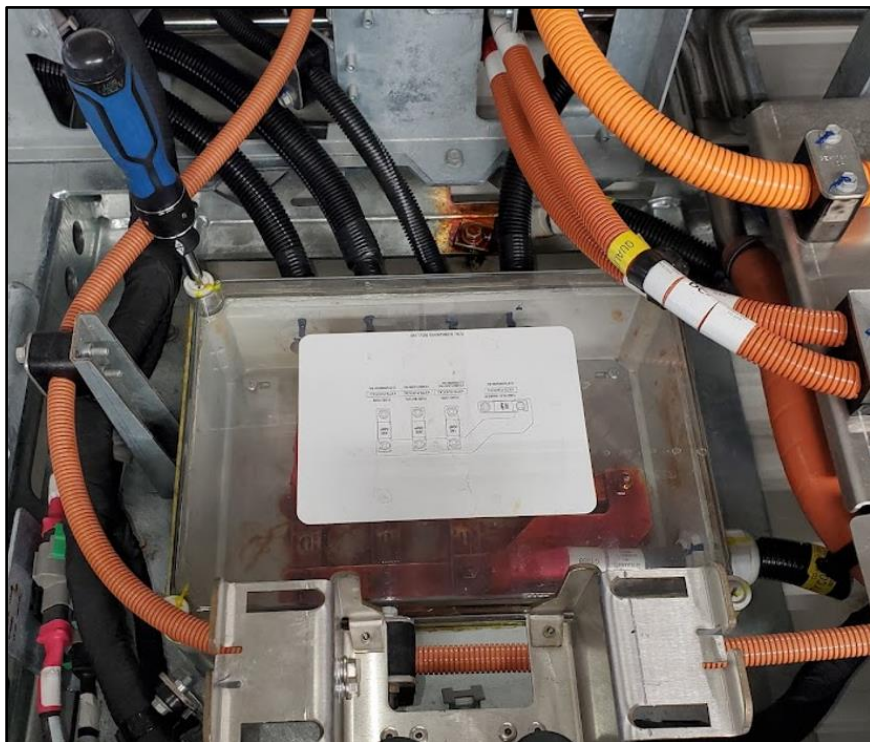
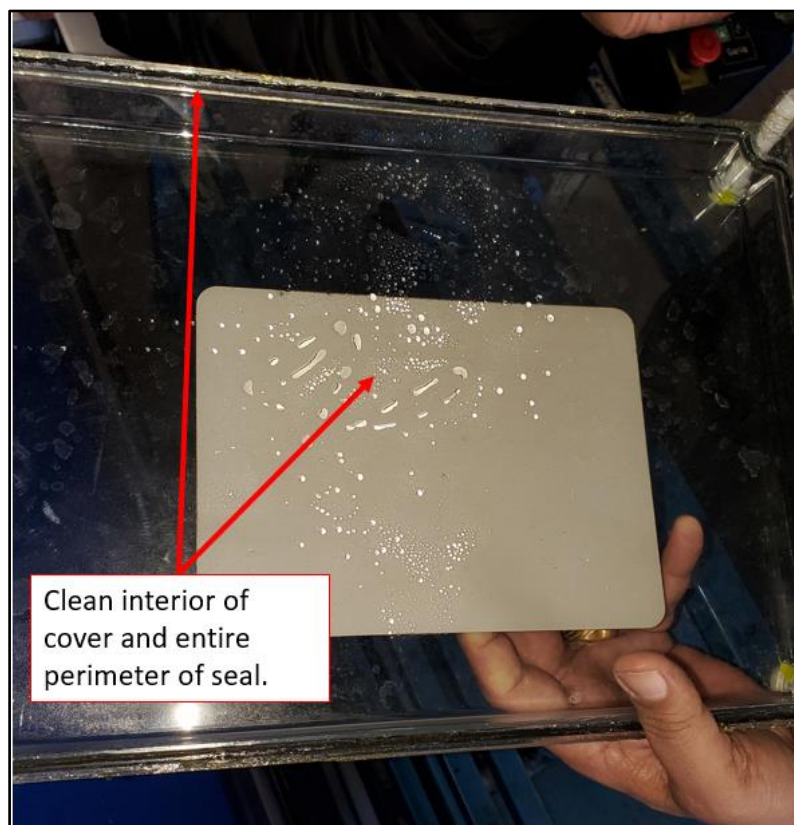


Figure 2: Canopy Doors to Locate Fuse Box

7. Loosen all four plastic screws on the fuse box cover using a #3 Philipps screwdriver. Remove the cover and inspect for signs of water intrusion. See figure 3.
8. Clean the fuse box cover and interior and with a rag thoroughly for any condensation and any gel that was applied to secure the cover previously. See figure 4.

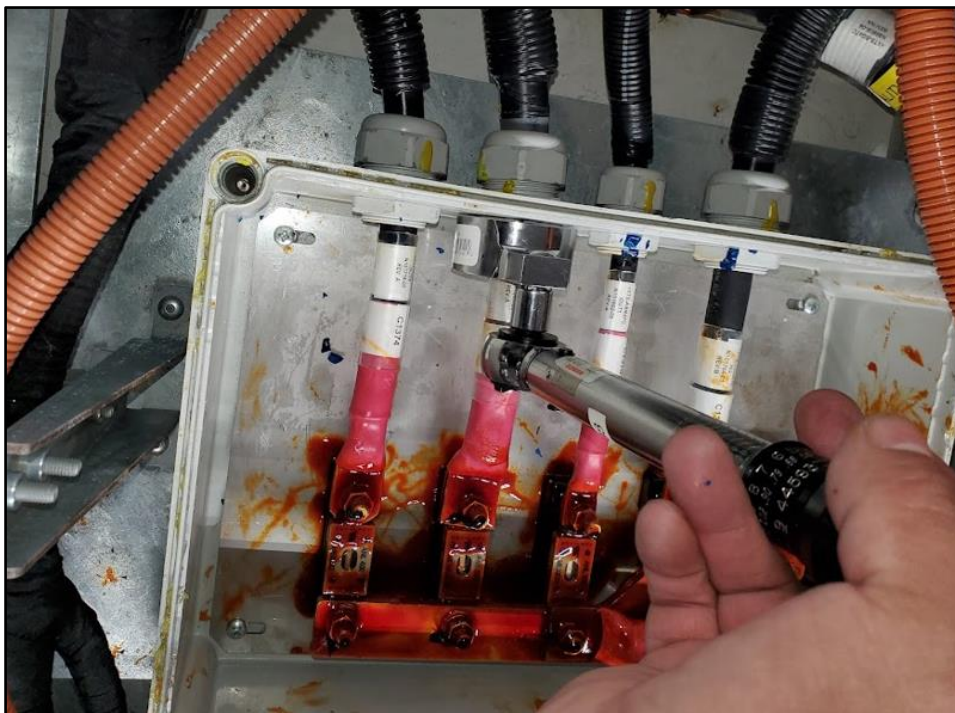


*Figure 3: Loosen cover screws with #3 Philipps screwdriver*

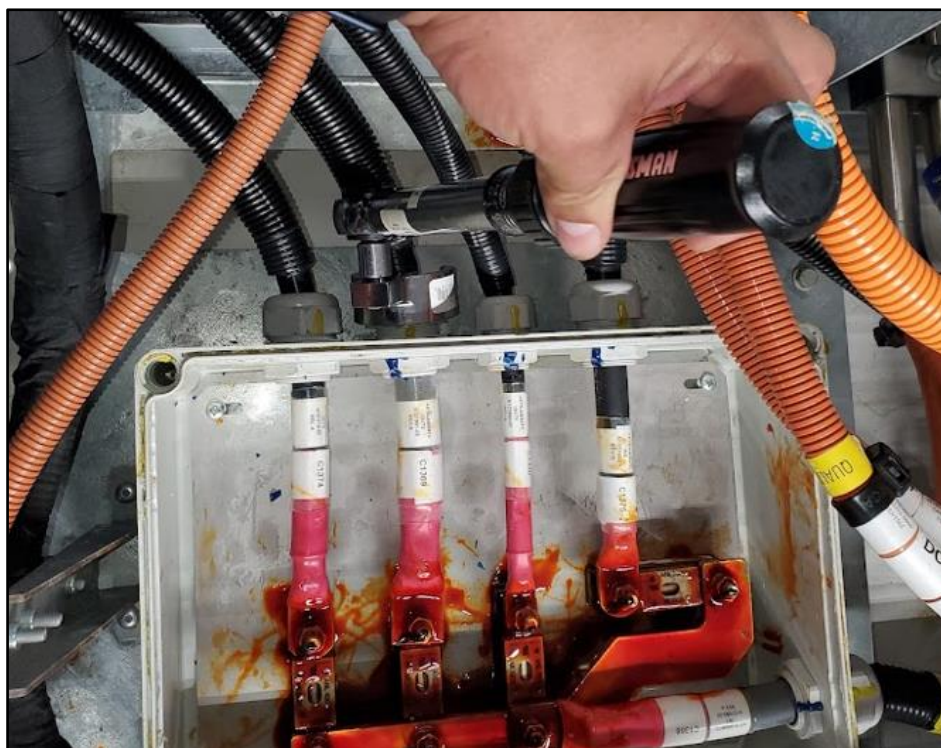


*Figure 4: Clean interior cover of condensation and previously applied gel on perimeter*

9. Loosen the cable gland interior lock nuts. See figure 5.
10. Slightly loosen the cable gland dome nuts. See figure 6.
11. Attempt to straighten the exterior portion of each cable as best as possible and then, using a torque wrench with a 12-pcs offset crowfoot attachment, torque the cable gland dome nuts in figure 7 according to table 1. Apply torque seal.



*Figure 5: Slightly loosen the cable gland interior lock nuts*



*Figure 6: Loosen the cable gland dome nuts*

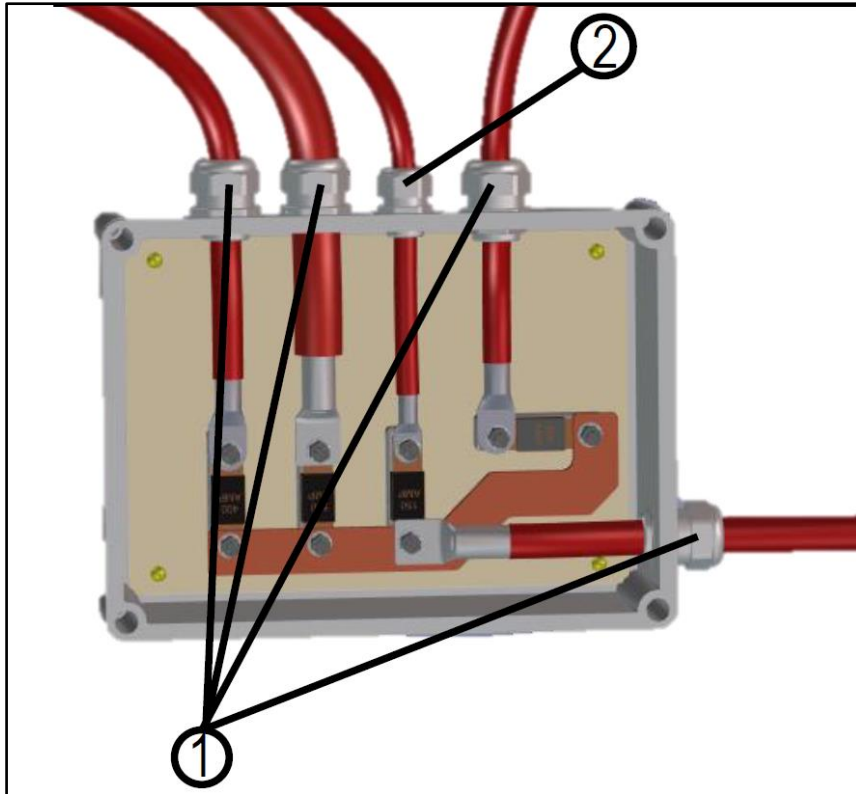
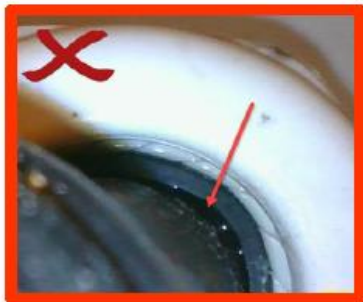


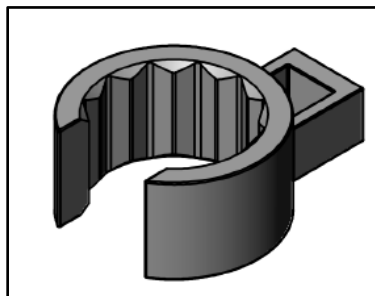
Figure 7: Cable Gland Dome Nuts



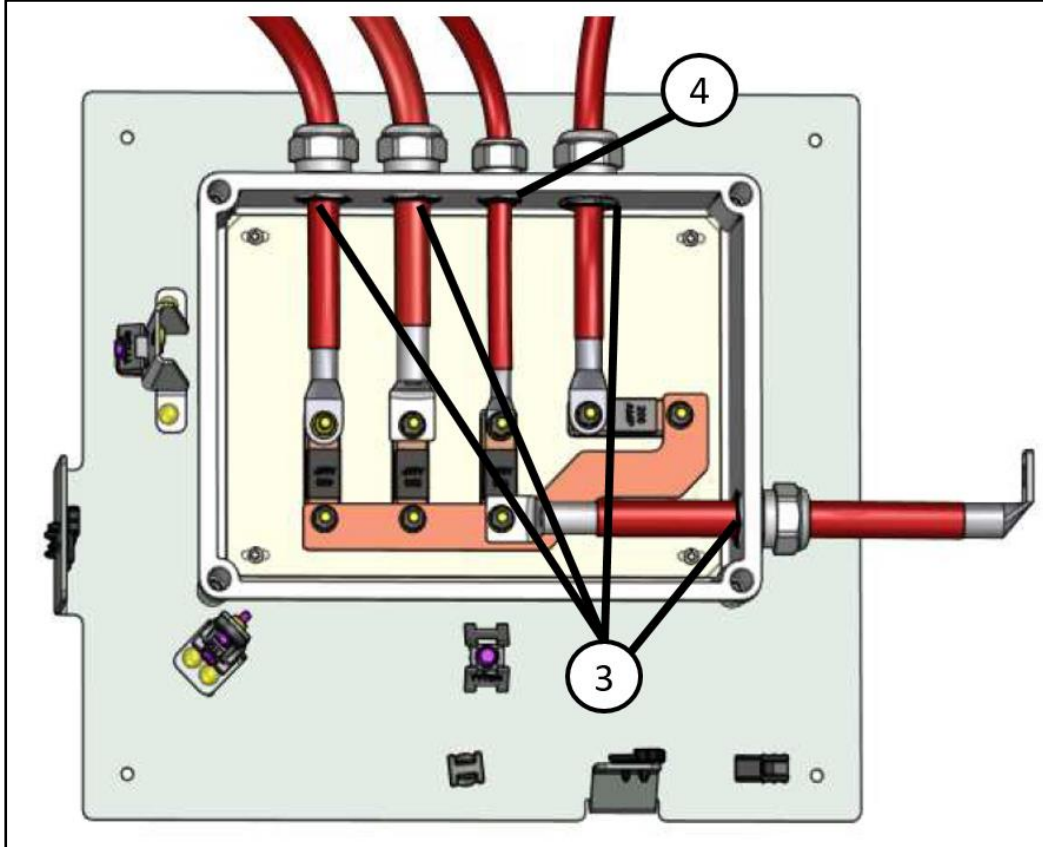
ITEM	Torque Value (Nm)	Torque Value (lb-in)
1	6.5	58
2	5	45

Table 1: Cable Gland Dome Nut Torque Value

Required socket type: 12-pcs offset crowfoot attachment



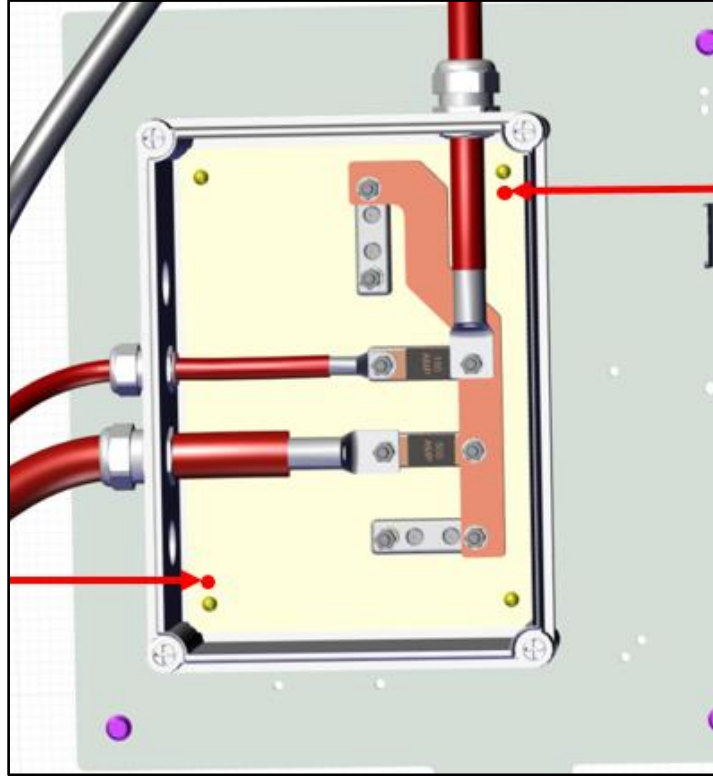
12. While holding the cables as straight as possible, tighten and torque the cable gland interior lock nuts according to table 2 below. Apply torque seal.



ITEM	Torque Value (Nm)	Torque Value (lb-in)
3	7.5	66
4	3.5	31

Table 2: Cable Gland Lock Nut Torque Value

13. Set the drill stopper to 1 inch and drill two (13/64") holes in the bottom of the fuse box (**through the plastic and bottom fuse box metal frame plate**) aligned within the slots on the metal fuse block support plate inside the fuse box.
14. Deburr the drilled holes using an emery cloth and clean all the metal shavings from the drilling with a shop vacuum.



*Figure 8: Position of holes*



*Figure 9: Example of drilled hole through plastic and metal plate*

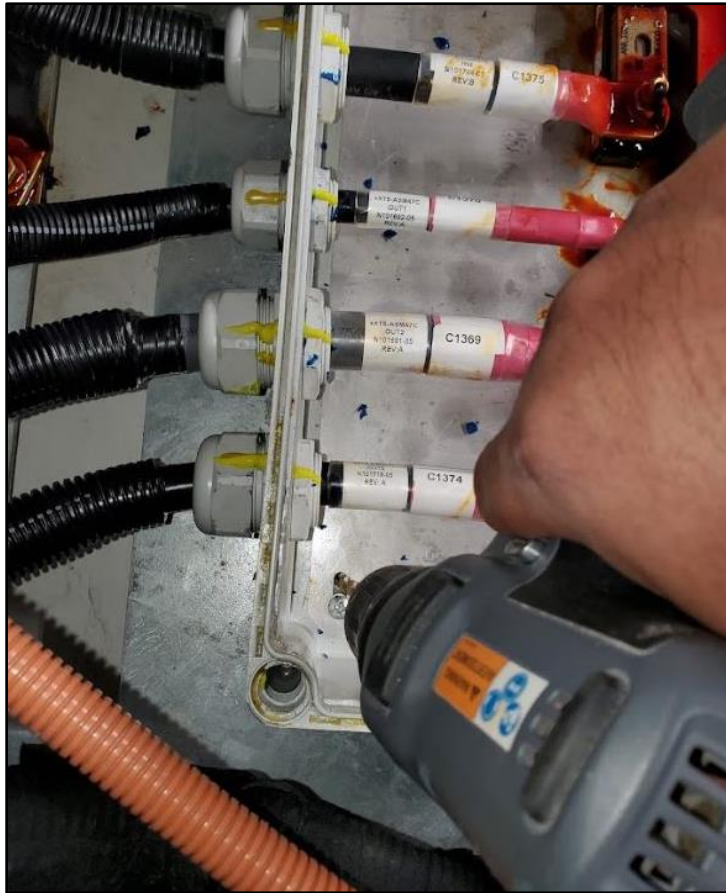


Figure 10: Drilling hole Bottom Left



Figure 11: Drilling Hole Top Right

15. Re-apply NCP-2 anticorrosion product on the electrical connection and hardware if required.
16. Apply a layer of NyoGel 760G to the face of the seal around the entire perimeter of the fuse box cover. The must be no gaps. (See figure 12).
  - a. The nozzle of the syringe may be trimmed to help the application.



Figure 12: Application of NyoGel on Cover Seal

17. Carefully re-install the cover of the fuse box and torque the four cover screws to 2Nm. Apply torque seal. (See figure 13). Use a Philipps #3 bit.

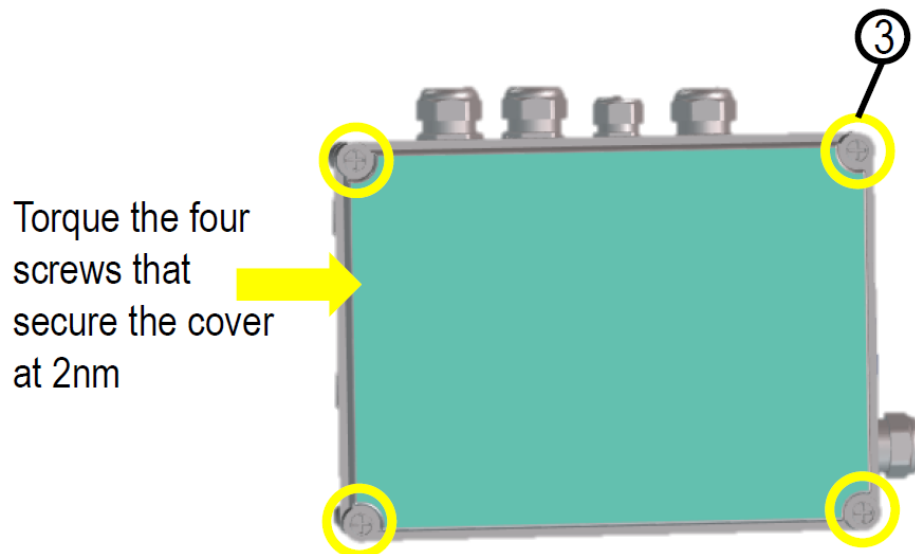


Figure 13: Torque for Cover Screws

18. Clean all equipment. Close all panels. The bus can be returned to service.

Client	Order	Road numbers	VIN	QTY (total 146)
New York City Transit New York - NYCT	LC79	9623	4RKYL82L1M9777782	1
New York City Transit New York - NYCT	LC79	9624	4RKYL82L3M9777783	1
New York City Transit New York - NYCT	LC79	9625	4RKYL82L5M9777784	1
New York City Transit New York - NYCT	LC79	9626	4RKYL82L7M9777785	1
New York City Transit New York - NYCT	LC79	9627	4RKYL82L9M9777786	1
New York City Transit New York - NYCT	LC79	9628	4RKYL82L0M9777787	1
New York City Transit New York - NYCT	LC79	9636	4RKYL82LXM9777795	1
New York City Transit New York - NYCT	LC79	9637	4RKYL82L1M9777796	1
New York City Transit New York - NYCT	LC79	9639	4RKYL82L5M9777798	1
New York City Transit New York - NYCT	LC79	9644	4RKYL82L5M9777803	1
New York City Transit New York - NYCT	LC79	9648	4RKYL82L2M9777807	1
New York City Transit New York - NYCT	LC79	9650	4RKYL82L6M9777809	1
New York City Transit New York - NYCT	LC79	9652	4RKYL82L4M9777811	1
New York City Transit New York - NYCT	LC79	9653	4RKYL82L6M9777812	1
New York City Transit New York - NYCT	LC79	9654	4RKYL82L8M9777813	1
New York City Transit New York - NYCT	LC79	9656	4RKYL82L1M9777815	1
New York City Transit New York - NYCT	LC79	9657	4RKYL82L3M9777816	1
New York City Transit New York - NYCT	LC79	9658	4RKYL82L5M9777817	1
New York City Transit New York - NYCT	LC79	9659	4RKYL82L7M9777818	1
New York City Transit New York - NYCT	LC79	9660	4RKYL82L9M9777819	1
New York City Transit New York - NYCT	LC79	9661	4RKYL82L5M9777820	1
New York City Transit New York - NYCT	LC79	9662	4RKYL82L7M9777821	1
New York City Transit New York - NYCT	LC79	9663	4RKYL82L9M9777822	1
New York City Transit New York - NYCT	LC79	9664	4RKYL82L0M9777823	1
New York City Transit New York - NYCT	LC79	9665	4RKYL82L2M9777824	1
New York City Transit New York - NYCT	LC79	9666	4RKYL82L4M9777825	1
New York City Transit New York - NYCT	LC79	9667	4RKYL82L6M9777826	1
New York City Transit New York - NYCT	LC79	9668	4RKYL82L8M9777827	1
New York City Transit New York - NYCT	LC79	9669	4RKYL82LXM9777828	1
New York City Transit New York - NYCT	LC79	9670	4RKYL82L1M9777829	1
New York City Transit New York - NYCT	LC79	9671	4RKYL82L8M9777830	1
New York City Transit New York - NYCT	LC79	9672	4RKYL82LXM9777831	1
New York City Transit New York - NYCT	LC79	9673	4RKYL82L1M9777832	1
New York City Transit New York - NYCT	LC79	9674	4RKYL82L3M9777833	1
New York City Transit New York - NYCT	LC79	9675	4RKYL82L5M9777834	1
New York City Transit New York - NYCT	LC79	9676	4RKYL82L7M9777835	1
New York City Transit New York - NYCT	LC79	9678	4RKYL82L0M9777837	1
New York City Transit New York - NYCT	LC79	9679	4RKYL82L2M9777838	1
New York City Transit New York - NYCT	LC79	9680	4RKYL82L4M9777839	1
New York City Transit New York - NYCT	LC79	9681	4RKYL82L0M9777840	1
New York City Transit New York - NYCT	LC79	9682	4RKYL82L2M9777841	1
New York City Transit New York - NYCT	LC79	9683	4RKYL82L4M9777842	1
New York City Transit New York - NYCT	LC79	9691	4RKYL82L3M9777850	1
New York City Transit New York - NYCT	LC79	9694	4RKYL82L9M9777853	1
New York City Transit New York - NYCT	LC79	9698	4RKYL82L6M9777857	1
New York City Transit New York - NYCT	LC79	9699	4RKYL82L8M9777858	1
New York City Transit New York - NYCT	LC79	9700	4RKYL82LXM9777859	1
New York City Transit New York - NYCT	LC79	9701	4RKYL82L6M9777860	1

Service Instruction  
QJ#: 2374

New York City Transit New York - NYCT	LC79	9702	4RKYL82L8M9777861	1
New York City Transit New York - NYCT	LC79	9707	4RKYL82L7M9777866	1
New York City Transit New York - NYCT	LC79	9710	4RKYL82L2M9777869	1
New York City Transit New York - NYCT	LC79	9711	4RKYL82L9M9777870	1
New York City Transit New York - NYCT	LC79	9712	4RKYL82L2M9777872	1
New York City Transit New York - NYCT	LC79	9713	4RKYL82L4M9777873	1
New York City Transit New York - NYCT	LC79	9714	4RKYL82L6M9777874	1
New York City Transit New York - NYCT	LC79	9715	4RKYL82L8M9777875	1
New York City Transit New York - NYCT	LC79	9717	4RKYL82L1M9777877	1
New York City Transit New York - NYCT	LC79	9718	4RKYL82L3M9777878	1
New York City Transit New York - NYCT	LC79	9719	4RKYL82L5M9777879	1
New York City Transit New York - NYCT	LC79	9720	4RKYL82L1M9777880	1
New York City Transit New York - NYCT	LC79	9721	4RKYL82L3M9777881	1
New York City Transit New York - NYCT	LC79	9723	4RKYL82L7M9777883	1
New York City Transit New York - NYCT	LC79	9724	4RKYL82L9M9777884	1
New York City Transit New York - NYCT	LC79	9725	4RKYL82L0M9777885	1
New York City Transit New York - NYCT	LC79	9727	4RKYL82L4M9777887	1
New York City Transit New York - NYCT	LC79	9728	4RKYL82L6M9777888	1
New York City Transit New York - NYCT	LC79	9730	4RKYL82L4M9777890	1
New York City Transit New York - NYCT	LC79	9731	4RKYL82L6M9777891	1
New York City Transit New York - NYCT	LC79	9732	4RKYL82L8M9777892	1
New York City Transit New York - NYCT	LC79	9733	4RKYL82L3M9777900	1
New York City Transit New York - NYCT	LC79	9734	4RKYL82L5M9777901	1
New York City Transit New York - NYCT	LC79	9735	4RKYL82L7M9777902	1
New York City Transit New York - NYCT	LC79	9736	4RKYL82L9M9777903	1
New York City Transit New York - NYCT	LC79	9738	4RKYL82L2M9777905	1
New York City Transit New York - NYCT	LC79	9739	4RKYL82L4M9777906	1
New York City Transit New York - NYCT	LC79	9740	4RKYL82L6M9777907	1
New York City Transit New York - NYCT	LC79	9742	4RKYL82LXM9777909	1
New York City Transit New York - NYCT	LC79	9744	4RKYL82L8M9777911	1
New York City Transit New York - NYCT	LC79	9745	4RKYL82LXM9777912	1
New York City Transit New York - NYCT	LC79	9746	4RKYL82L1M9777913	1
New York City Transit New York - NYCT	LC79	9748	4RKYL82L5M9777915	1
New York City Transit New York - NYCT	LC79	9749	4RKYL82L7M9777916	1
New York City Transit New York - NYCT	LC79	9750	4RKYL82L9M9777917	1
New York City Transit New York - NYCT	LC79	9751	4RKYL82L0M9777918	1
New York City Transit New York - NYCT	LC79	9752	4RKYL82L2M9777919	1
New York City Transit New York - NYCT	LC79	9753	4RKYL82L9M9777920	1
New York City Transit New York - NYCT	LC79	9754	4RKYL82L4M9777923	1
New York City Transit New York - NYCT	LC79	9755	4RKYL82L6M9777924	1
New York City Transit New York - NYCT	LC79	9756	4RKYL82L8M9777925	1
New York City Transit New York - NYCT	LC79	9757	4RKYL82LXM9777926	1
New York City Transit New York - NYCT	LC79	9758	4RKYL82L1M9777927	1
New York City Transit New York - NYCT	LC79	9759	4RKYL82L3M9777928	1
New York City Transit New York - NYCT	LC79	9760	4RKYL82L5M9777929	1
New York City Transit New York - NYCT	LC79	9761	4RKYL82L1M9777930	1
New York City Transit New York - NYCT	LC79	9762	4RKYL82L3M9777931	1
New York City Transit New York - NYCT	LC79	9763	4RKYL82L5M9777932	1
New York City Transit New York - NYCT	LC79	9764	4RKYL82L7M9777933	1
New York City Transit New York - NYCT	LC79	9765	4RKYL82L0M9777935	1
New York City Transit New York - NYCT	LC79	9766	4RKYL82L2M9777936	1

Service Instruction

QJ#: 2374

New York City Transit New York - NYCT	LC79	9767	4RKYL82L4M9777937	1
New York City Transit New York - NYCT	LC79	9768	4RKYL82L6M9777938	1
New York City Transit New York - NYCT	LC79	9769	4RKYL82L8M9777939	1
New York City Transit New York - NYCT	LC79	9770	4RKYL82L4M9777940	1
New York City Transit New York - NYCT	LC79	9771	4RKYL82L6M9777941	1
New York City Transit New York - NYCT	LC79	9772	4RKYL82L8M9777942	1
New York City Transit New York - NYCT	LC79	9773	4RKYL82LXM9777943	1
New York City Transit New York - NYCT	LC79	9774	4RKYL82L1M9777944	1
New York City Transit New York - NYCT	LC79	9775	4RKYL82L3M9777945	1
New York City Transit New York - NYCT	LC79	9776	4RKYL82L5M9777946	1
New York City Transit New York - NYCT	LC79	9777	4RKYL82L7M9777947	1
New York City Transit New York - NYCT	LC79	9778	4RKYL82L9M9777948	1
New York City Transit New York - NYCT	LC79	9779	4RKYL82L0M9777949	1
New York City Transit New York - NYCT	LC79	9780	4RKYL82L7M9777950	1
New York City Transit New York - NYCT	LC79	9782	4RKYL82L0M9777952	1
New York City Transit New York - NYCT	LC79	9783	4RKYL82L2M9777953	1
New York City Transit New York - NYCT	LC79	9784	4RKYL82L4M9777954	1
New York City Transit New York - NYCT	LD64	9786	4RKYL82L6M9777955	1
New York City Transit New York - NYCT	LD64	9787	4RKYL82L8M9777956	1
New York City Transit New York - NYCT	LD64	9789	4RKYL82L1M9777958	1
New York City Transit New York - NYCT	LD64	9790	4RKYL82L3M9777959	1
New York City Transit New York - NYCT	LD64	9791	4RKYL82L0M9777966	1
New York City Transit New York - NYCT	LD64	9792	4RKYL82L2M9777967	1
New York City Transit New York - NYCT	LD64	9793	4RKYL82L4M9777968	1
New York City Transit New York - NYCT	LD64	9794	4RKYL82L6M9777969	1
New York City Transit New York - NYCT	LD64	9795	4RKYL82L2M9777970	1
New York City Transit New York - NYCT	LD64	9796	4RKYL82L4M9777971	1
New York City Transit New York - NYCT	LD64	9799	4RKYL82LXM9777974	1
New York City Transit New York - NYCT	LD64	9800	4RKYL82L1M9777975	1
New York City Transit New York - NYCT	LD64	9802	4RKYL82L5M9777977	1
New York City Transit New York - NYCT	LD64	9803	4RKYL82L7M9777978	1
New York City Transit New York - NYCT	LD64	9805	4RKYL82L5M9777980	1
New York City Transit New York - NYCT	LD64	9806	4RKYL82L7M9777981	1
New York City Transit New York - NYCT	LD64	9807	4RKYL82LXM9777988	1
New York City Transit New York - NYCT	LD64	9810	4RKYL82LXM9777991	1
New York City Transit New York - NYCT	LD64	9811	4RKYL82L1M9777992	1
New York City Transit New York - NYCT	LD64	9812	4RKYL82L3M9777993	1
New York City Transit New York - NYCT	LD64	9823	4RKYL82L8M9778010	1
New York City Transit New York - NYCT	LD64	9828	4RKYL82L7M9778015	1
New York City Transit New York - NYCT	LD64	9829	4RKYL82L4M9778022	1
New York City Transit New York - NYCT	LD64	9830	4RKYL82L6M9778023	1
New York City Transit New York - NYCT	LD64	9831	4RKYL82L8M9778024	1
New York City Transit New York - NYCT	LD64	9832	4RKYL82LXM9778025	1
New York City Transit New York - NYCT	LD64	9837	4RKYL82L3M9778030	1
New York City Transit New York - NYCT	LD64	9841	4RKYL82L6M9778040	1
New York City Transit New York - NYCT	LD64	9844	4RKYL82L1M9778043	1
New York City Transit New York - NYCT	LD64	9845	4RKYL82L3M9778044	1