



SERVICE BULLETIN

Classification: BT21-025A	Reference: NTB22-002A	Date: February 22, 2022
------------------------------	--------------------------	----------------------------

2013-2018 ALTIMA; FRONT COMBINATION LAMPS (HEADLAMPS) INSPECTION

This bulletin has been amended. See **AMENDMENT HISTORY** on the last page.
Please discard previous versions of this bulletin.

APPLIED VEHICLES: 2013-2018 Altima (L33)
APPLIED SYSTEMS: Front Combination Lamps (Headlamps) – Halogen ONLY

SERVICE INFORMATION

Nissan is committed to providing the highest levels of product quality and customer satisfaction. Therefore, Nissan will provide a three-year extension of the manufacturer’s warranty (for a total of six years) covering headlamp dimming due to delamination. All other warranty terms, limitations, and conditions remain unchanged.

During the warranty extension period, if a headlamp dimming condition due to delamination is found in either headlamp, Nissan will replace both headlamps at no charge for parts and labor.

Nissan Bulletins are intended for use by qualified technicians, not 'do-it-yourselfers'. Qualified technicians are properly trained individuals who have the equipment, tools, safety instruction, and know-how to do a job properly and safely. **NOTE:** If you believe that a described condition may apply to a particular vehicle, DO NOT assume that it does. See your Nissan dealer to determine if this applies to your vehicle.

SERVICE PROCEDURE

1. Open the driver (LH) side door.
2. Set the parking brake.
3. Start the engine.
4. Turn the headlamps ON using the combination switch.
 - Ensure the low beams are ON, high beams are OFF.
 - If equipped, turn the fog lights OFF.



Figure 1

5. Clean both front headlamp assemblies using clean water and a clean soft car towel.



Figure 2

Inspect Both Headlamps Low Beam Light Pattern

HINT: To help highlight the headlamp low beam light pattern on the headlamp lenses, you can spray both headlamp assemblies with Nissan Foaming Glass Cleaner (PN: 999MP-A3050P) or an equivalent foaming glass cleaner (Figure 3 and Figure 4).

NOTICE

To avoid damage to the headlamp assemblies:

- Do not use glass cleaner containing ammonia.
- Do not use any other harsh chemicals to clean the headlamp lenses.



Figure 3



Figure 4

6. Stand approximately 3 – 3 1/2 feet back from the center of the front bumper to view the headlamp low beam light pattern on the headlamp lenses.



Figure 5

7. Visually inspect and compare the low beam light pattern projected on both of the headlamp lenses to the Good (OK) Examples (Figure 6 - Figure 11 on pages 4 and 5) and the No Good (NG) Examples (Figure 12 - Figure 15 on page 6).
- If the headlamp low beam light pattern condition is OK, the inspection process is complete.
 - Write the inspection result of each headlamp assembly on the repair order.
 - If the headlamp low beam light pattern condition is No Good (NG) for either of the headlamp assemblies:
 - a. Write the inspection result of each headlamp assembly on the repair order.
 - b. Proceed to step 8 on page 7 to replace both headlamp assemblies.

Good (OK) Examples

2016-2018 Models shown, 2013-2015 Models are similar

NOTE: The figures below show the low beam light pattern without Nissan Foaming Glass Cleaner.

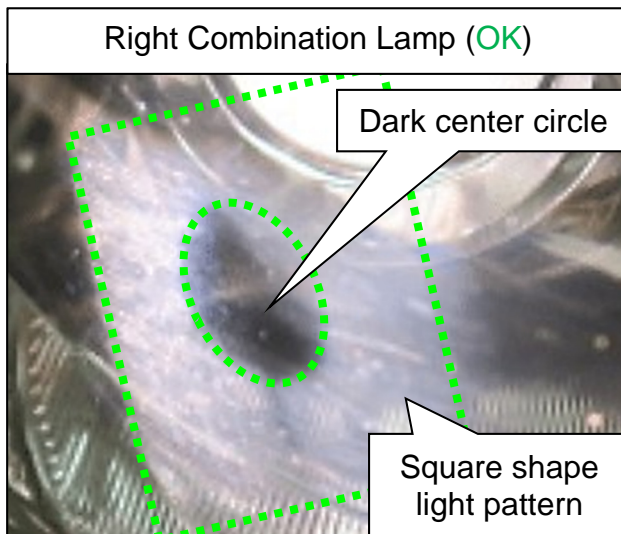


Figure 6

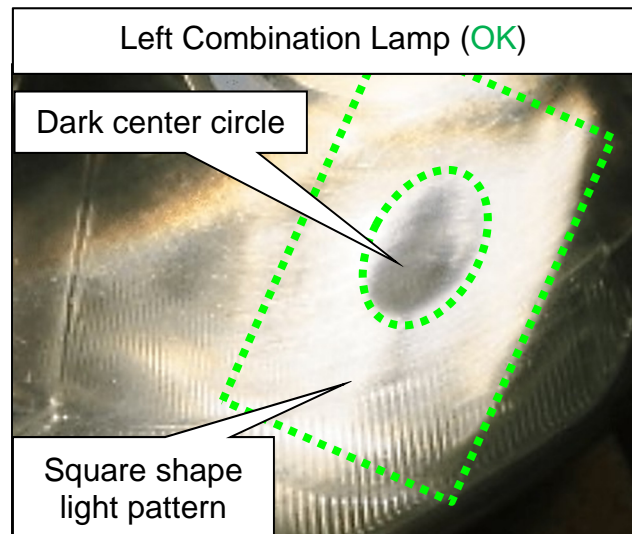


Figure 7

Good (OK) Examples

NOTE: The figures below show the low beam light pattern enhanced with Nissan Foaming Glass Cleaner.

2013-2015 Models

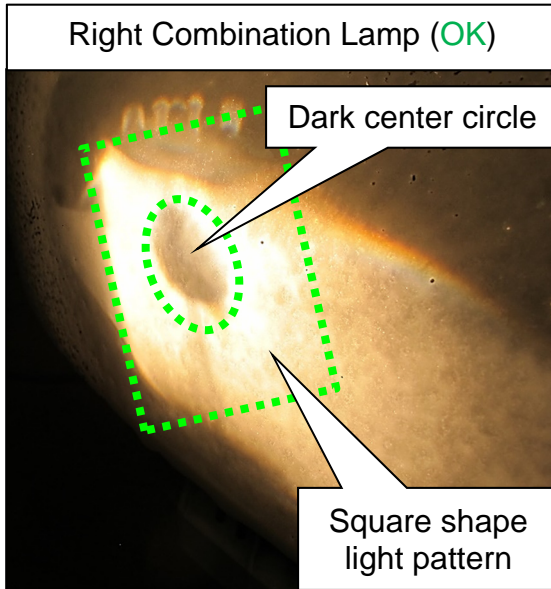


Figure 8

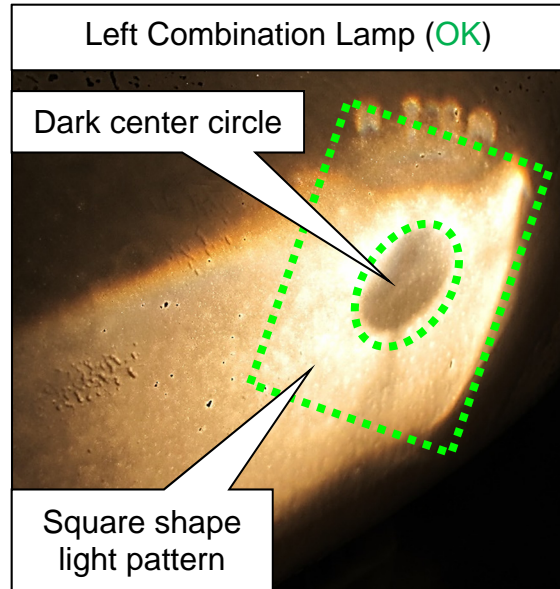


Figure 9

2016-2018 Models

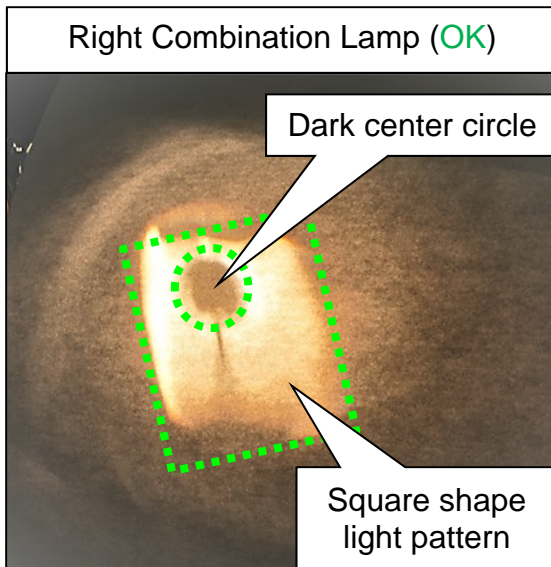


Figure 10

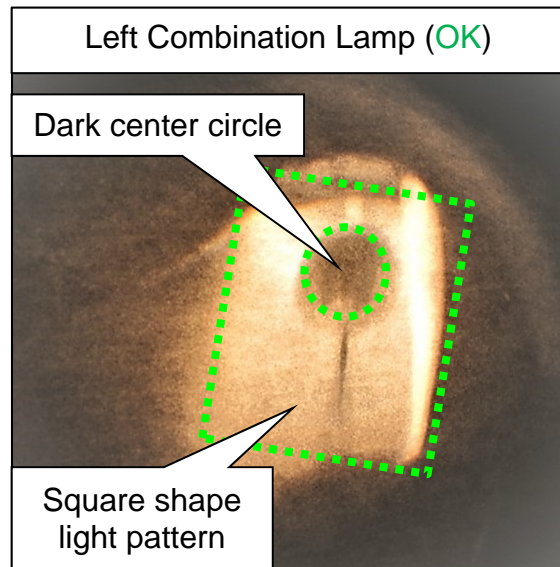


Figure 11

No Good (NG) Examples

2013-2015 Models shown, 2016-2018 Models are similar

IMPORTANT: Headlamp assemblies with yellowed or hazed lenses do not affect the low beam light pattern. Replacement of headlamp assemblies for yellowed or hazed lenses is not covered by the terms of the three-year extension described in this Service Bulletin.

NOTE: The figures below show the low beam light pattern without Nissan Foaming Glass Cleaner.

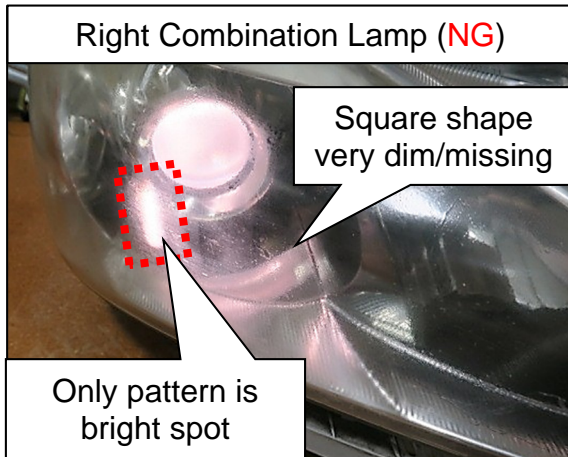


Figure 12

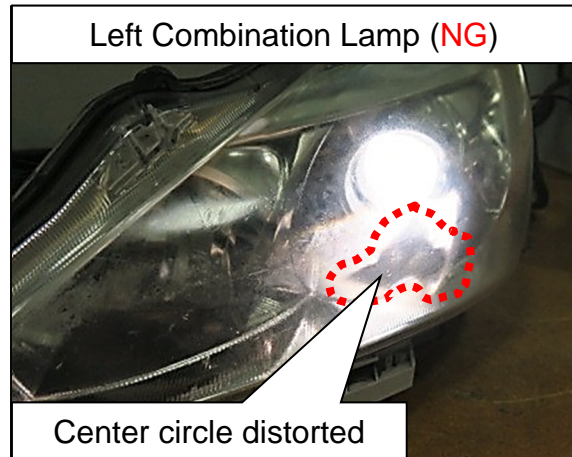


Figure 13

NOTE: The figures below show the low beam light pattern enhanced with Nissan Foaming Glass Cleaner.

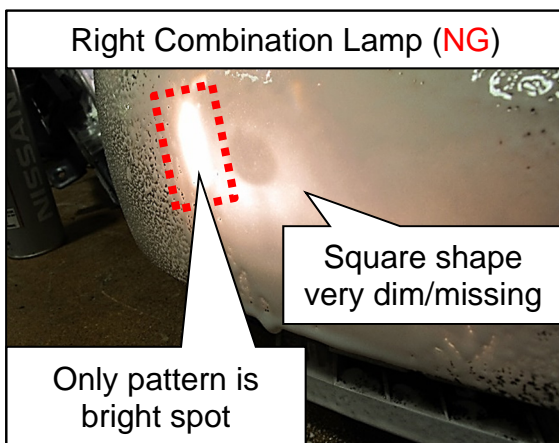


Figure 14

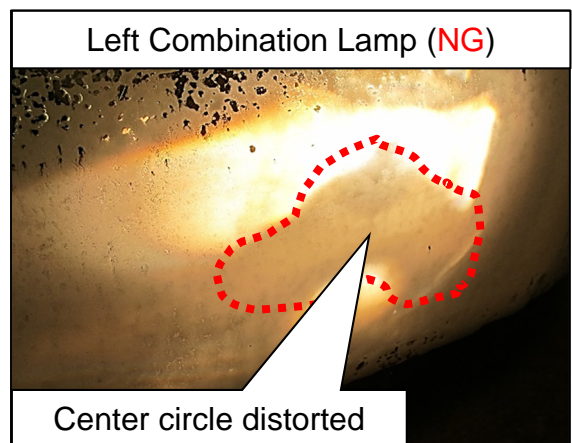


Figure 15

8. Replace the headlamp assemblies.

IMPORTANT: Do NOT replace headlamp assemblies for yellowed or hazed lenses.

- For 2013-2015 Altima, refer to the ESM: **DRIVER CONTROLS > EXTERIOR LIGHTING SYSTEM > REMOVAL AND INSTALLATION > FRONT COMBINATION LAMP > Removal and Installation - Halogen**
- For 2016-2018 Altima, refer to the ESM: **DRIVER CONTROLS > EXTERIOR LIGHTING SYSTEM > HALOGEN HEADLAMP > REMOVAL AND INSTALLATION > FRONT COMBINATION LAMP > Removal and Installation**

9. Perform headlamp aiming adjustment on the replaced headlamp assemblies.

- For 2013-2015 Altima, refer to the ESM: **DRIVER CONTROLS > EXTERIOR LIGHTING SYSTEM > PERIODIC MAINTENANCE > HEADLAMP > Aiming Adjustment**
- For 2016-2018 Altima, refer to the ESM: **DRIVER CONTROLS > EXTERIOR LIGHTING SYSTEM > HALOGEN HEADLAMP > PERIODIC MAINTENANCE > HEADLAMP > Aiming Adjustment**

PARTS INFORMATION

DESCRIPTION	PART NUMBER	QUANTITY
LAMP ASSY – HEAD (RH) (Headlamp Assembly)	26010 – (1)	1 (If Needed)
LAMP ASSY – HEAD (LH) (Headlamp Assembly)	26060 – (1)	1 (If Needed)

(1) Use the VIN in the EPC to determine the correct part number.

CLAIMS INFORMATION

Submit a Primary Operation (PO) type line claim using the following claims coding:

DESCRIPTION	OP CODE	SYM	DIA	FRT
Combination Lamps (Headlamps) - OK Condition	RX0FAA	ZA	13	0.2

NOTE: This operation code is for a check only; not to be claimed with any other operation code.

OR

Submit a Primary Part (PP) type line claim using the following claims coding:

DESCRIPTION	PFP	OP CODE	SYM	DIA	FRT
Replace Both Combination Lamps (Headlamps)	(1)	RX0HAA	ZA	13	1.4

(1) Reference the EPC, using the VIN, and use the Headlamp Assembly as the Primary Failed Part (PFP).

AMENDMENT HISTORY

PUBLISHED DATE	REFERENCE	DESCRIPTION
January 19, 2022	NTB22-002	Original bulletin published
February 22, 2022	NTB22-002A	CLAIMS INFORMATION updated