



Preliminary Information

PIP5795 LM2 Diesel with a Rear Main Oil Leak with or without DTC P06DD set

Models

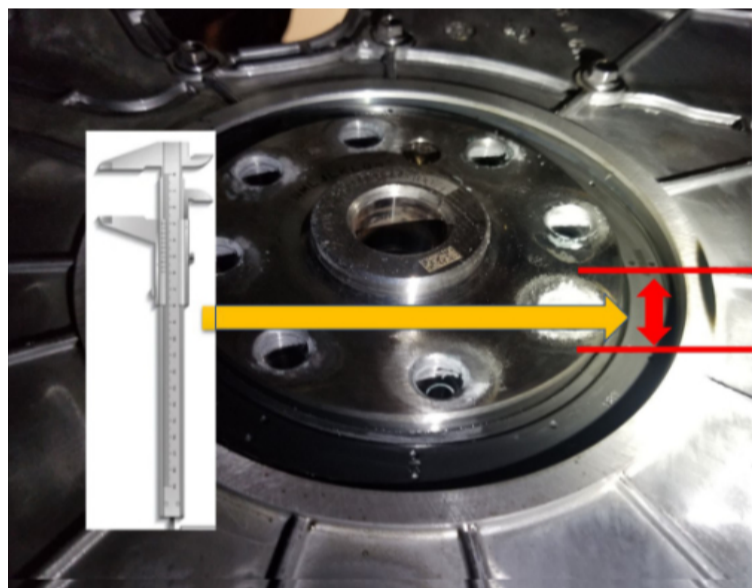
Brand:	Model:	Model Years:	VIN:		Engine:	Transmissions:
			from	to		
Cadillac	Escalade Models	2021	All	All	3.0L (LM2)	All
Chevrolet	Silverado 1500	2020 - 2021	All	All	3.0L (LM2)	All
Chevrolet	Suburban	2021	All	All	3.0L (LM2)	All
Chevrolet	Tahoe	2021	All	All	3.0L (LM2)	All
GMC	Sierra 1500	2020 - 2021	All	All	3.0L (LM2)	All
GMC	Yukon Models	2021	All	All	3.0L(LM2)	All

Involved Region or Country:	North America
Condition:	A customer may have a concern with an oil leak. The technician may find DTC P06DD set.
Cause:	The rear main oil seal may have moved or severely shifted out of position in the Timing Chain Lower Cover.

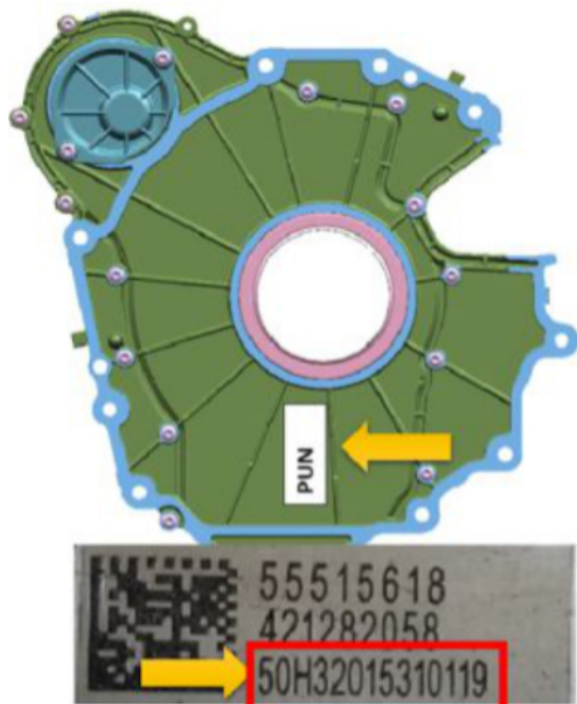
Correction:

Replace the Timing Chain Lower Cover that comes with a seal already installed.
Refer to Service Information for Timing Chain Lower Cover Installation Procedure.

If the seal is crooked or tilted out of position, use a caliper and record the depth where the seal is pushed in prior to removing the rear cover.
Also place an indexing mark on the seal and cover in case the seal falls out or moves during shipping of the part to the Warranty Part Center (see picture below).



Record the Part Unique Number found on the white label attached to the back of the cover as shown in the picture below.

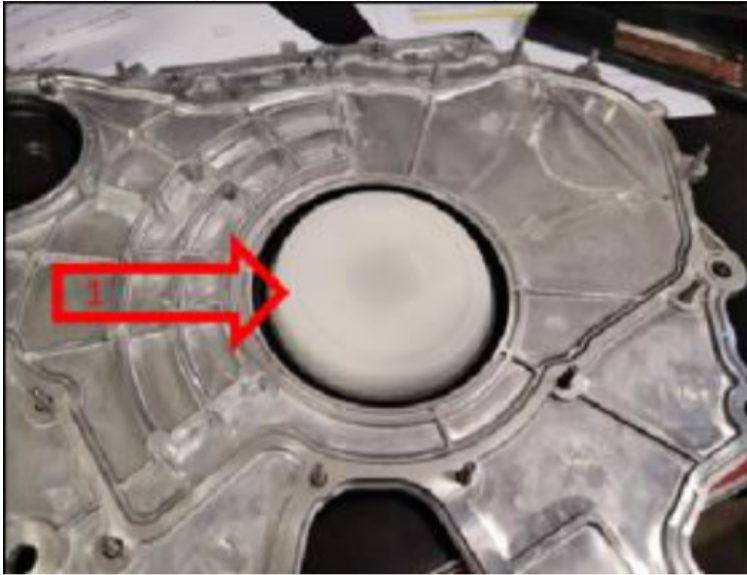


Example: PUN 50H32015310119

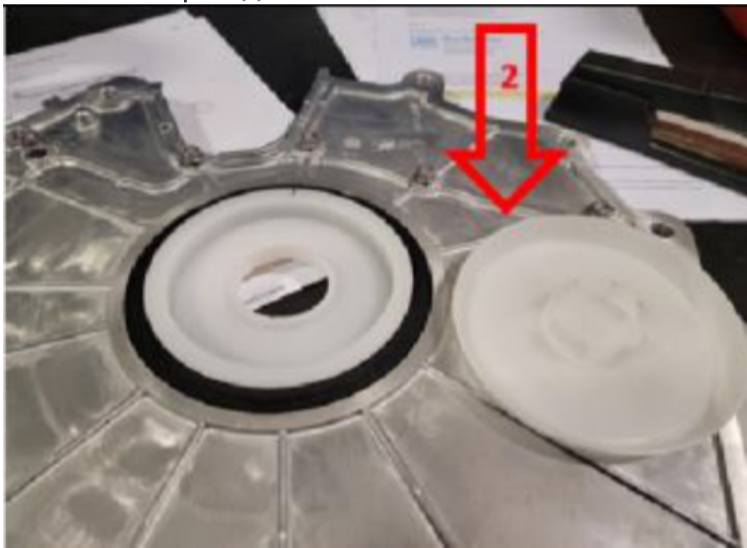
The Timing Chain Lower Cover comes with a 2 piece protector/installer.

The inner piece becomes an installation tool.

The outer piece simply holds them together for shipment.

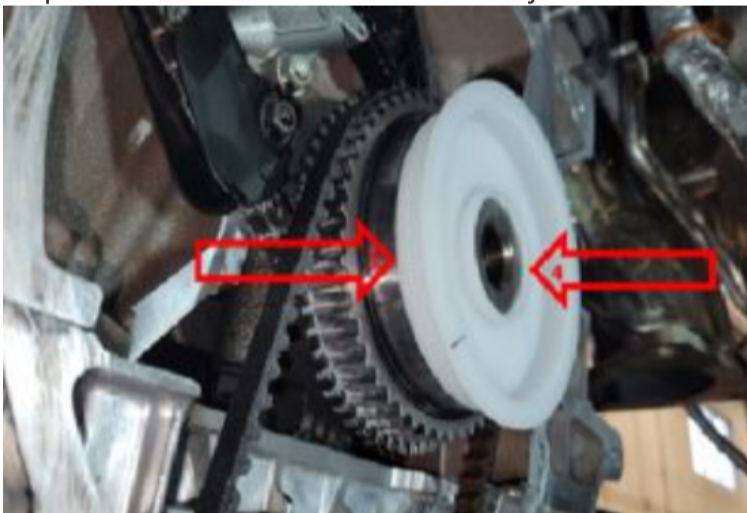


Remove the outer piece (2) and discard it.



Note: The inner piece is an installation tool designed to be a substitute for the EN52466-2 installation tool. It fits over the bevel on the end of the crankshaft to facilitate installation. Be extremely mindful that the inner lip of the seal slides over the rear of the crankshaft without rolling or a repeat oil leak will occur. The protector/installer has a snug fit to the pilot of the crankshaft.

The picture below is shown without the cover for clarity.



Parts Information

Description	Part Number	Quantity
Lower Timing Cover	55515618	1

Version History

Version	1
Modified	03/30/2021 - Created on.



GENERAL MOTORS

© 2022 General Motors. All Rights Reserved.