



SERVICE BULLETIN

Classification: EC13-014J	Reference: NTB13-097J	Date: February 7, 2022
------------------------------	--------------------------	---------------------------

EVAP LEAK DTC P0442, P0455, P0456 INFORMATION

This bulletin has been amended. See **AMENDMENT HISTORY** on the last page.
Please discard previous versions of this bulletin.

APPLIED VEHICLES: All 2012 and newer Nissan vehicles
except LEAF and Titan XD with V8 diesel engine

SERVICE INFORMATION

All **APPLIED VEHICLES** have a warning indicator in the instrument area to alert the driver of a loose fuel filler cap (see Figure 1 example).

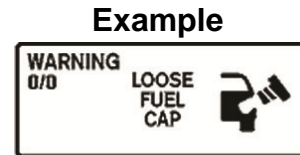


Figure 1

- If a vehicle displays a loose fuel filler cap warning light or message, the driver should safely stop the vehicle and make sure the fuel filler cap is installed correctly.
- **Make sure the customer is informed of the proper fuel filler cap installation.**
- Customers should refer to their vehicle Owner’s Manual for specific details on the “LOOSE FUEL CAP” warning system and fuel filler cap installation.

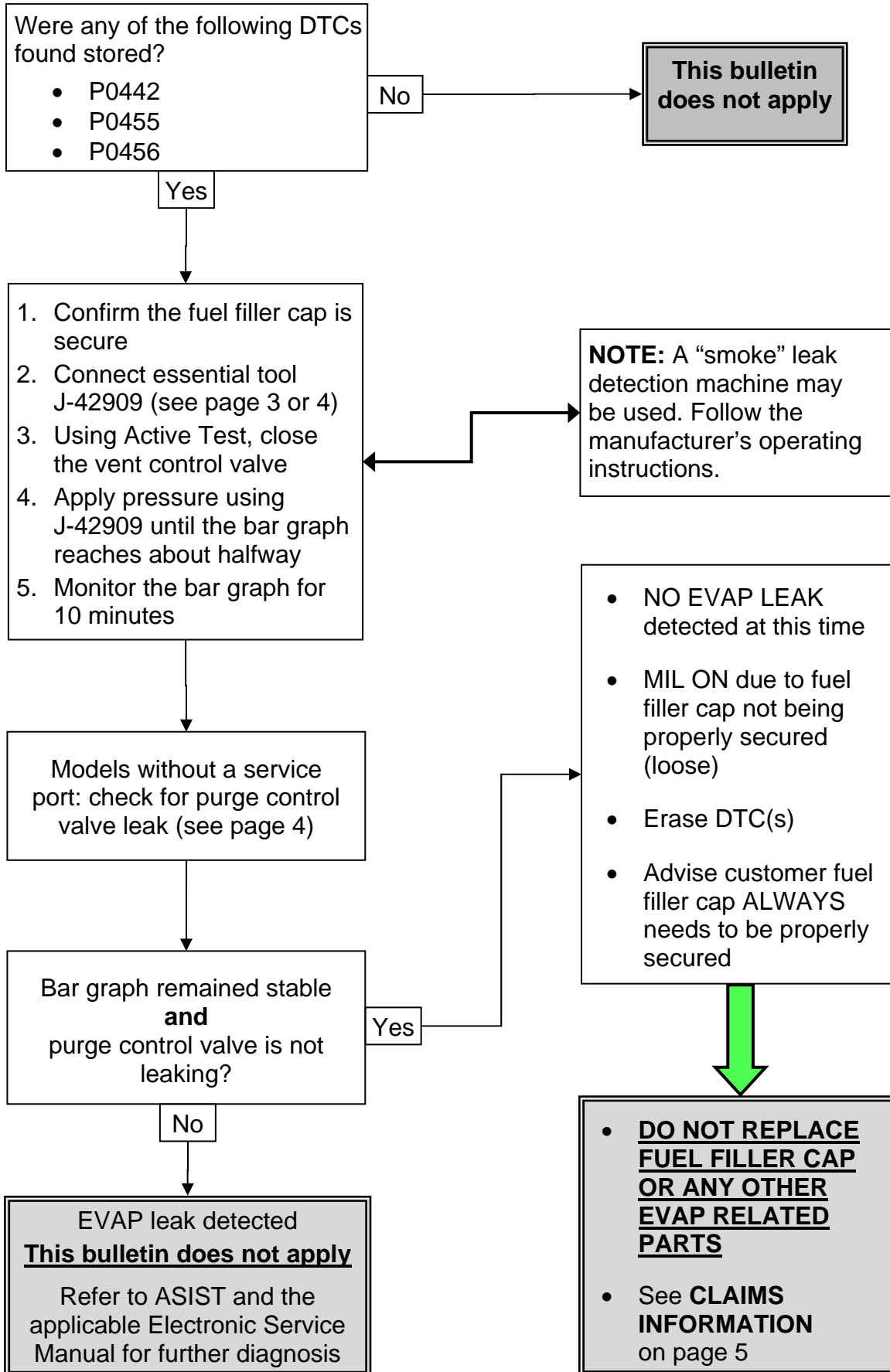
If a fuel filler cap is left loose for multiple trips, DTCs will be stored and the MIL will illuminate.

- A loose fuel filler cap may be the cause if one or more of these EVAP leak DTCs are stored: **P0442, P0455, P0456**.
- If P0442, P0455, and/or P0456 is found stored, begin vehicle EVAP system diagnosis using the **FLOW CHART** on the next page.
 - A test drive is not part of the DTC confirmation or diagnostic procedures for these DTCs.
 - Test driving the vehicle for these DTCs will only waste time.
 - The diagnostic procedure in this bulletin must be used for these DTCs for an effective repair.

NOTE: Any parts replaced under warranty for repair of these DTCs are on automatic parts return to NNA for inspection. Any part found to be functional will cause a charge-back to the dealer.

Nissan Bulletins are intended for use by qualified technicians, not 'do-it-yourselfers'. Qualified technicians are properly trained individuals who have the equipment, tools, safety instruction, and know-how to do a job properly and safely. NOTE: If you believe that a described condition may apply to a particular vehicle, DO NOT assume that it does. See your Nissan dealer to determine if this applies to your vehicle.

FLOW CHART



Models with a Service Port (2017 and older)

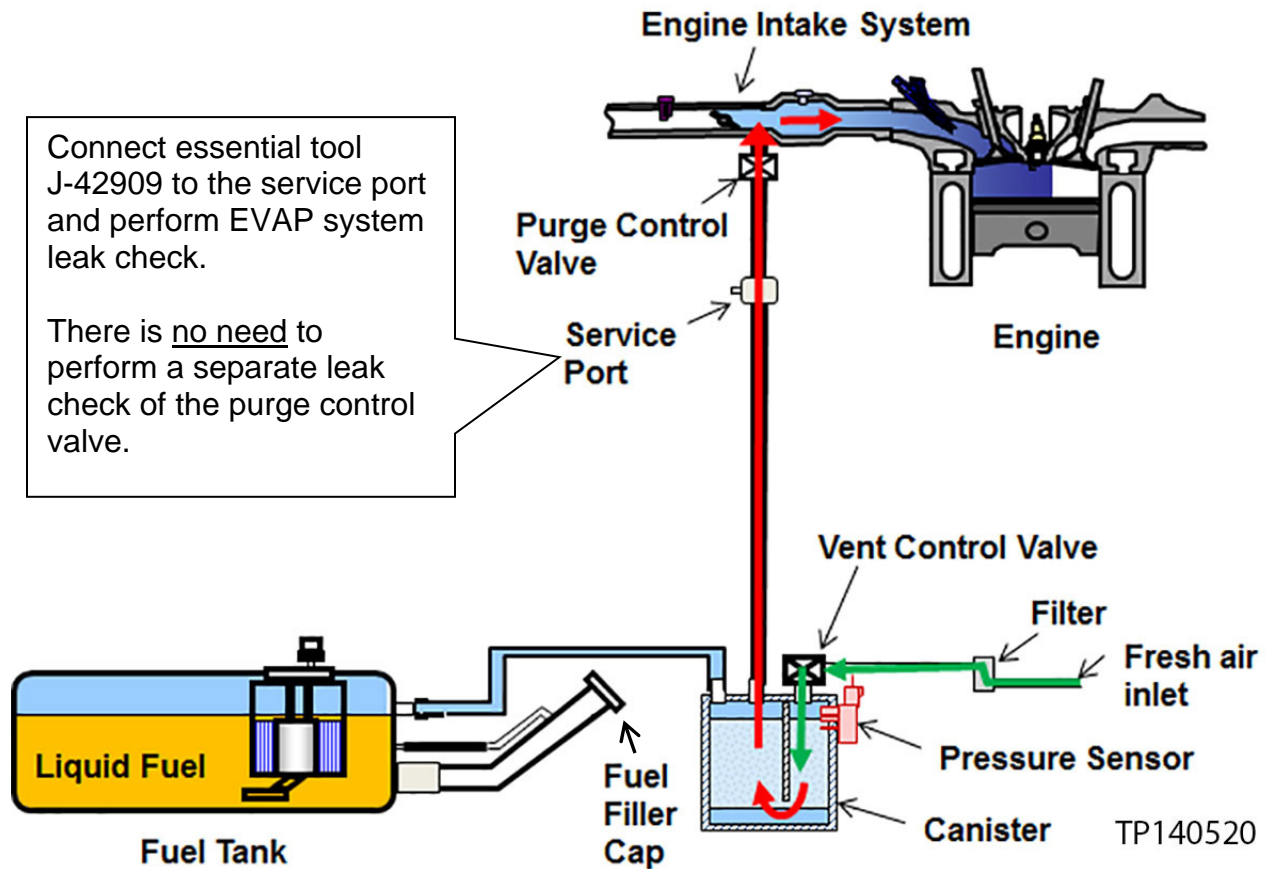


Figure 2

EVAP System Basic Operation

- Fuel vapor flows from fuel tank into canister (light blue area)
- Vapor flows from canister through purge control valve (red line)
- Fresh air flows into canister (green line)

Models without a Service Port (2018 and Newer)

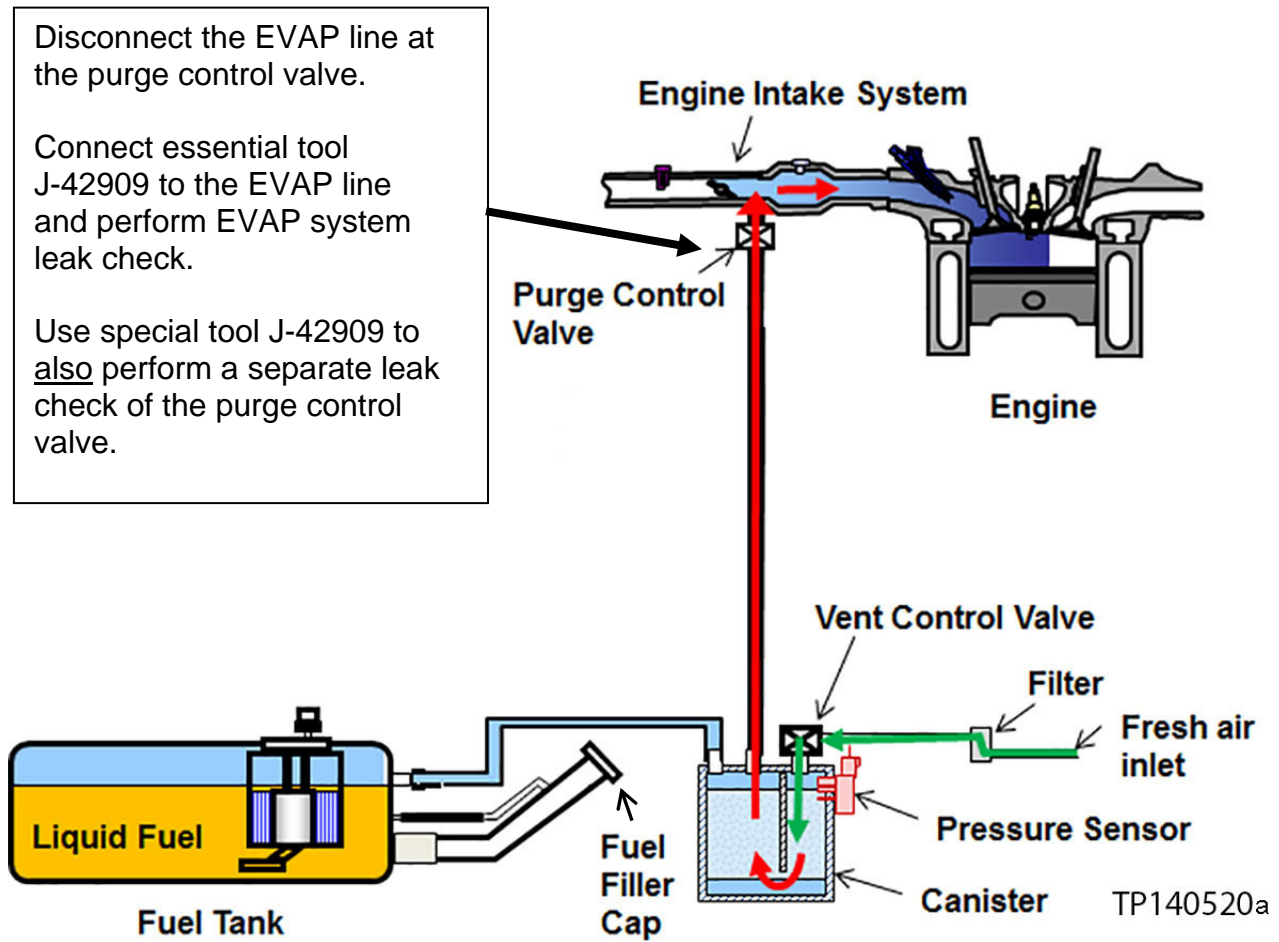


Figure 3

EVAP System Basic Operation

- Fuel vapor flows from fuel tank into canister (light blue area)
- Vapor flows from canister through purge control valve (red line)
- Fresh air flows into canister (green line)

CLAIMS INFORMATION

Submit a Primary Part (PP) type line claim using the following claims coding:

DESCRIPTION	PFP	OP CODE	SYM	DIA	FRT
EVAP System Leak Test	(1)	FX47AA	ZE	32	0.4

(1) Refer to the electronic parts catalog and use the Fuel Cap part number (17251-xxxxx) as the primary failed part.

AMENDMENT HISTORY

PUBLISHED DATE	REFERENCE	DESCRIPTION
November 15, 2013	NTB13-097	Original bulletin published
September 16, 2014	NTB13-097A	SERVICE INFORMATION and CLAIMS INFORMATION revised, and publication date updated to include the latest models and model years
May 29, 2015	NTB13-097B	Publication date updated to include the latest models and model years
February 4, 2016	NTB13-097C	SERVICE INFORMATION and FLOW CHART revised, and publication date updated to include the latest models and model years
August 4, 2016	NTB13-097D	Publication date updated to include the latest models and model years
March 30, 2017	NTB13-097E	Publication date updated to include the latest models and model years
August 15, 2018	NTB13-097F	SERVICE PROCEDURE revised, and publication date updated to include the latest models and model years
January 29, 2019	NTB13-097G	Publication date updated to include the latest models and model years
November 30, 2020	NTB13-097H	Publication date updated to include the latest models and model years
March 1, 2021	NTB13-097I	Publication date updated to include the latest models and model years
February 7, 2022	NTB13-097J	Publication date updated to include the latest models and model years