

- ATTENTION:**
- GENERAL MANAGER
 - PARTS MANAGER
 - CLAIMS PERSONNEL
 - SERVICE MANAGER

IMPORTANT - All Service Personnel Should Read and Initial in the boxes provided, right.

© 2022 Subaru of America, Inc. All rights reserved.



QUALITY DRIVEN® SERVICE

SERVICE INFORMATION BULLETIN

APPLICABILITY: 2020-22MY Legacy & Outback

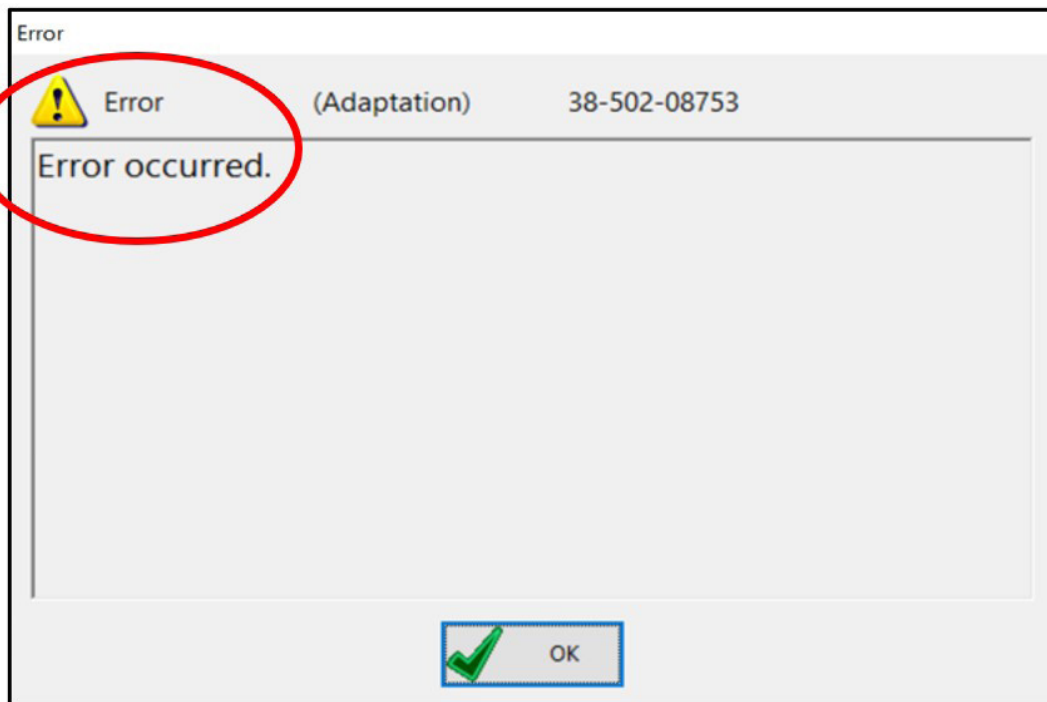
NUMBER: 07-204-22

SUBJECT: Tentative Select Monitor Procedures When Replacing and/or Diagnosing Combination Meters

DATE: 02/18/2022

INTRODUCTION:

This Service Information Bulletin announces tentative Subaru Select Monitor procedure information to follow when replacing and/or diagnosing combination meters. There are three different scenarios addressed in this bulletin. These include, meter replacement, meter data analysis, and activated meter testing. The information outlined below describes each scenario and the course of action if encountered.



CAUTION: VEHICLE SERVICING PERFORMED BY UNTRAINED PERSONS COULD RESULT IN SERIOUS INJURY TO THOSE PERSONS OR TO OTHERS.

Subaru Service Bulletins are intended for use by professional technicians ONLY. They are written to inform those technicians of conditions that may occur in some vehicles, or to provide information that could assist in the proper servicing of the vehicle. Properly trained technicians have the equipment, tools, safety instructions, and know-how to do the job correctly and safely. If a condition is described, DO NOT assume that this Service Bulletin applies to your vehicle, or that your vehicle will have that condition.

Subaru of America, Inc. is ISO 14001 Compliant

ISO 14001 is the international standard for excellence in Environmental Management Systems. Please recycle or dispose of automotive products in a manner that is friendly to our environment and in accordance with all local, state and federal laws and regulations.

Continued...

SERVICE PROCEDURE / INFORMATION:

REMINDER: Customer satisfaction and retention starts with performing quality repairs.

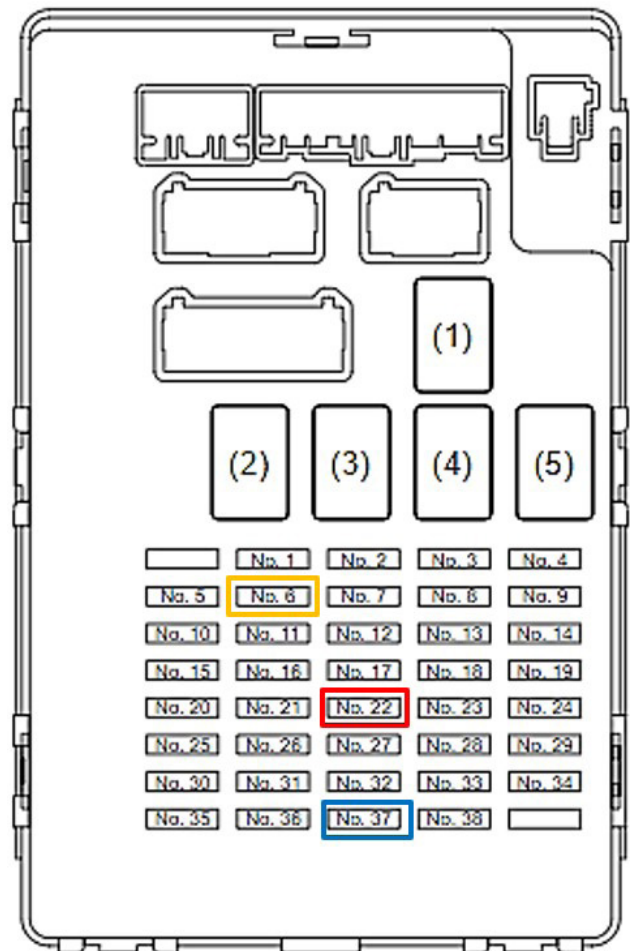
Scenario 1:

Tentative Procedures To Follow When Replacing Combination Meters

In order to avoid the error shown above, follow the procedures listed below. **DO NOT** disconnect the battery.

An error message may occur when replacing the combination meter. The Subaru Service Manual (Body & Electrical/WIRING SYSTEM > INSTRUMENTATION/DRIVER INFO > Combination Meter) instructs the Technician to disconnect the battery sensor from the ground terminal in the first step of the work procedure. Doing so can cause an error during the process of transferring the odometer value to the NEW combination meter. This occurs because the central gateway was previously reset by the battery sensor/ground terminal disconnection. If the error occurs after the odometer value has been detected within the SSM, the carry-over of the odometer value **CANNOT** be performed.

1. **DO NOT** disconnect the battery sensor from the ground terminal.
2. Remove fuse number 6, 37, and 22 from the fuse box. Refer to the image to the right for fuse locations.
 - **Fuse 6** – MET IG 7.5A
 - **Fuse 37** - MET B 15A
 - **Fuse 22** - DMS B 10A
3. When following these procedure steps during replacement of the combination meter, it is possible for DTC U0155 to be set and/or stored. This fault is to be ignored and cleared once all combination meter replacement work has been completed. **NOTE:** If the battery was disconnected prior to replacement, reconnect the battery, cycle the key, and continue using the procedures provided above.



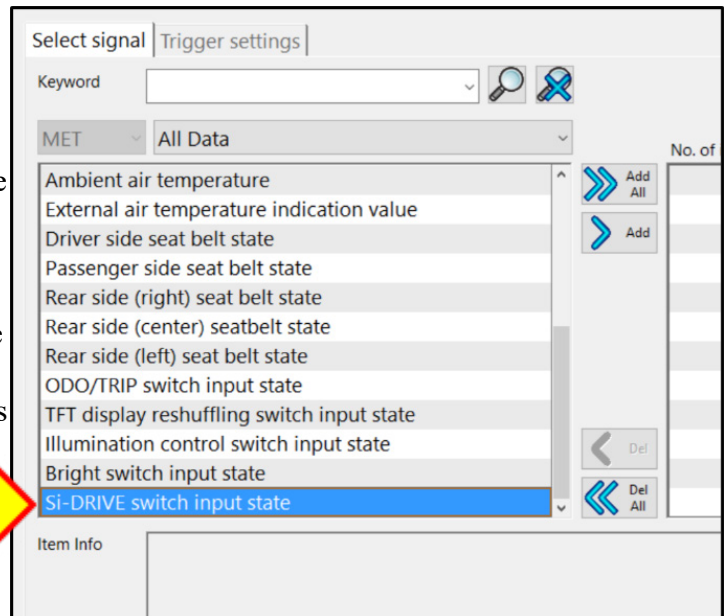
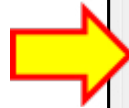
Continued...

Scenario 2:

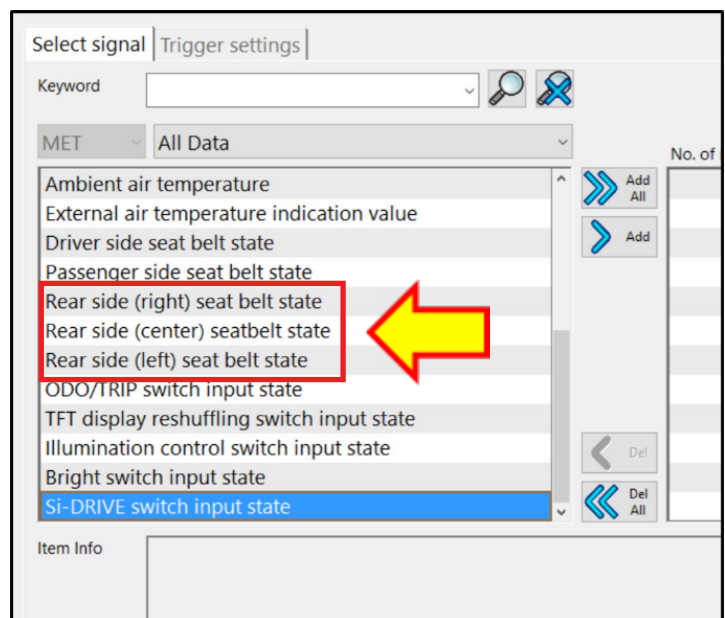
Tentative Procedures When Monitoring Combination Meter Data

An error message may be displayed on Subaru Select Monitor when performing diagnostic work with the combination meter.

- To avoid an error message while using the “Data Monitor” portion of SSM, confirm the monitor item labeled “Si Drive” is **NOT** selected/added when working on a vehicle not equipped with Si Drive before proceeding. If selected on a vehicle not fitted with Si Drive and data monitoring is attempted, the error message will display.



- To avoid an error message while using the “Data Monitor” portion of SSM, confirm the Rear side (right, center or left) seat belt state selection is accurately selected in accordance with vehicles fitted with or without rear seatbelt warning.



Continued...

Scenario 3:

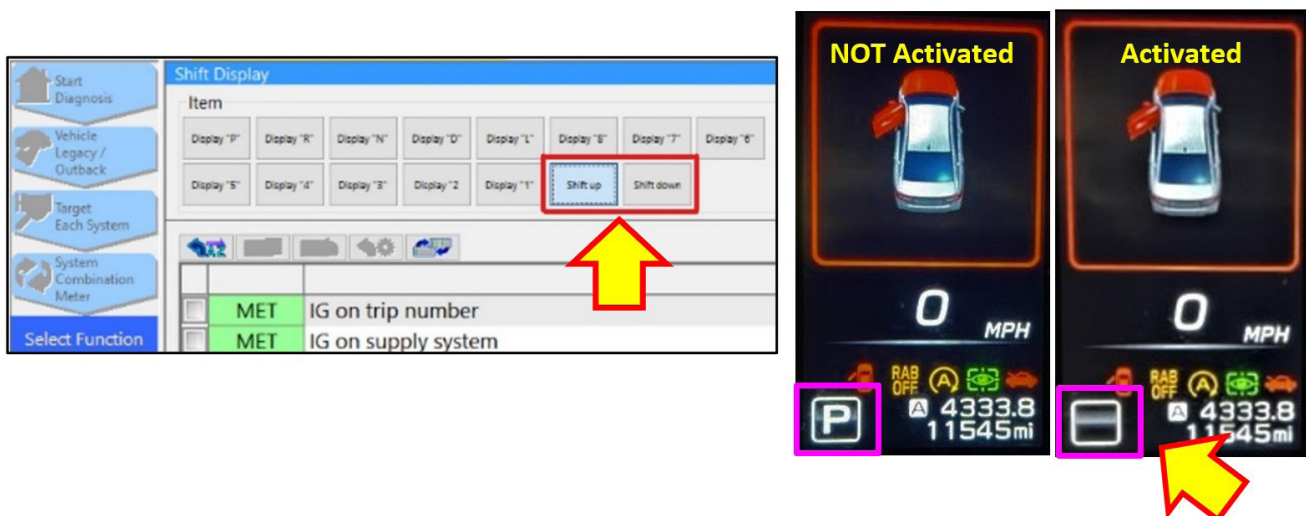
Tentative Functionality of Activated Tests Using Select Monitor

- When using the “Active Test” feature within SSM, the following items will not display the desired activation of the combination meter. If these items are selected and activated, there will be no change displayed within the combination meter.

- SRH OFF
- CRUISE indicator
- SET indicator

NOTE: An error message WILL NOT be displayed when attempting to use these functions.

- When using the Shift up and Shift down display request item (pictured lower left), the combination meter will only display a blank indication instead of the desired gear selection (pictured lower right.)



NOTE: An error message WILL NOT be displayed when attempting to use this function.

IMPORTANT NOTE: A change will be introduced to the combination meter logic in the future to address all of the scenarios described in this bulletin. These procedures are to be followed until further notice.

IMPORTANT REMINDERS:

- SOA strongly discourages the printing and/or local storage of service information as previously released information and electronic publications may be updated at any time.
- Always check for any open recalls or campaigns anytime a vehicle is in for servicing.
- Always refer to STIS for the latest service information before performing any repairs.