

ATTENTION:
GENERAL MANAGER
PARTS MANAGER
CLAIMS PERSONNEL
SERVICE MANAGER

IMPORTANT - All Service Personnel Should Read and Initial in the boxes provided, right.

© 2022 Subaru of America, Inc. All rights reserved.



QUALITY DRIVEN® SERVICE

SERVICE BULLETIN

APPLICABILITY: 2022 BRZ

NUMBER: 12-234-22

SUBJECT: Body Repair Manual Correction

DATE: 02/28/22

INTRODUCTION:

This Service Information Bulletin announces additional information for the 2022MY BRZ Body Repair Manual. This information supplies added detail for roof panel replacement. It is **IMPORTANT** to fully review this bulletin prior to performing any roof panel replacement on 22MY BRZ.

BODY REPAIR MANUAL REVISION INFORMATION:

A revision of the 2022MY BRZ Body Repair Manual concerning this information is currently being developed and the release date is TBD.

SERVICE PROCEDURE / INFORMATION:

REMINDER: Customer satisfaction and retention starts with performing quality repairs.

The additional information outlined in this bulletin is to be used in conjunction with procedures currently provided in the Body Repair Manual. The information listed below is the current roof panel replacement section beginning on page #196 with the revisions outlined in **RED**.

CAUTION: VEHICLE SERVICING PERFORMED BY UNTRAINED PERSONS COULD RESULT IN SERIOUS INJURY TO THOSE PERSONS OR TO OTHERS.

Subaru Service Bulletins are intended for use by professional technicians ONLY. They are written to inform those technicians of conditions that may occur in some vehicles, or to provide information that could assist in the proper servicing of the vehicle. Properly trained technicians have the equipment, tools, safety instructions, and know-how to do the job correctly and safely. If a condition is described, DO NOT assume that this Service Bulletin applies to your vehicle, or that your vehicle will have that condition.

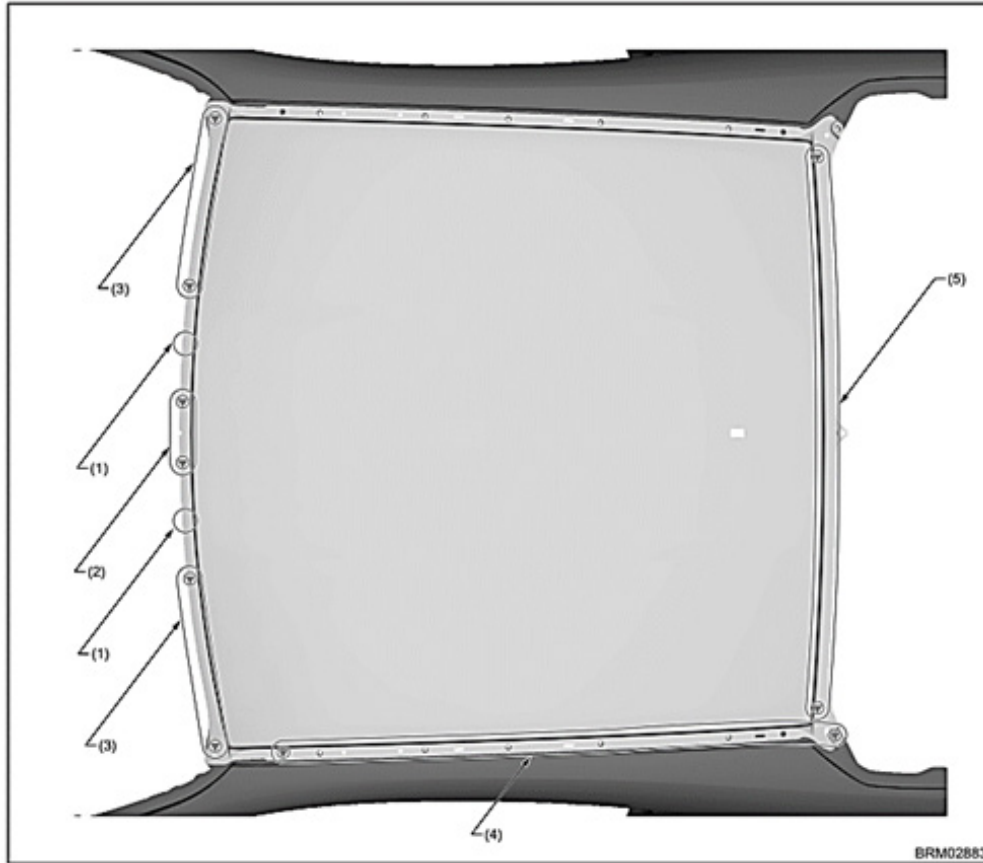
Subaru of America, Inc. is ISO 14001 Compliant

ISO 14001 is the international standard for excellence in Environmental Management Systems. Please recycle or dispose of automotive products in a manner that is friendly to our environment and in accordance with all local, state and federal laws and regulations.

Continued...

B: INSTALLATION

- Overall view 1



(1) 1 point (Clamp)

(2) 2 points (Countersunk rivet)

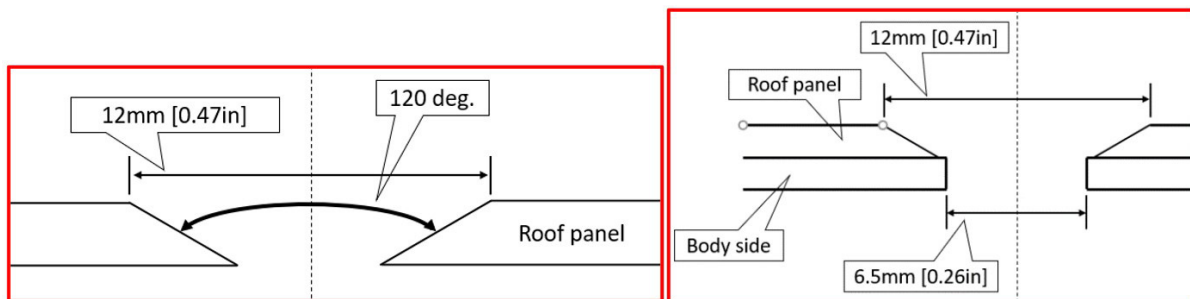
(3) 4 points (Countersunk rivet)

(4) 8 points (Blind rivet)

(5) 10 points (Countersunk rivet)

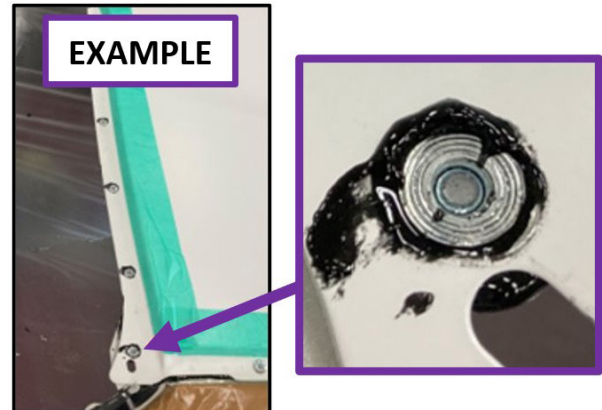
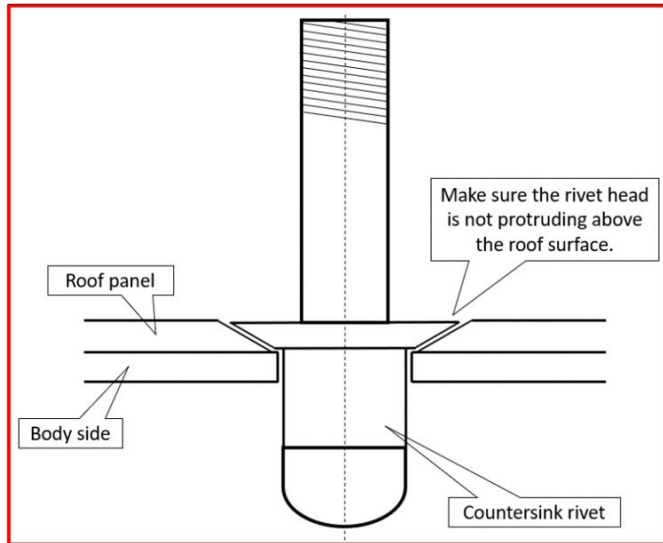
NOTES:

- In locations where countersunk rivets are used, drill a pilot hole of 6.5 mm [0.26 in] in diameter. **With the roof panel removed from the vehicle,** taper the hole to a diameter of 12 mm [0.47 in] with a taper of 120° so the rivet head does not protrude above the roof panel. See images below.



Continued...

- Treat the cut remaining shaft of the rivet so it does not protrude above the rivet head. See images below.



- Install the roof panel so the gap between the plate rail and roof panel in the structural adhesive application location is 2 mm [0.08 in] or less.
- The clamps shown in (1) should be removed after the structural adhesive is completely cured.

IMPORTANT REMINDERS:

- SOA strongly discourages the printing and/or local storage of service information as previously released information and electronic publications may be updated at any time.
- Always check for any open recalls or campaigns anytime a vehicle is in for servicing.
- Always refer to STIS for the latest service information before performing any repairs.