

Type: Campaign
 Year: 2022
 System: Chassis
 Sequence: 01

Title: Rim Marking Inspection

Applicability: VINs on list
Region: All

PRIORITY: Vehicles on list (page 2)
PURPOSE:

This bulletin will will instruct on visual inspection process and identification of the wheel rims for the required markings. The markings are a DOT regulation but do not affect the wheel performance.

There is no safety concern with wheel integrity.

The affected vehicles below are subject to this inspection.

50GK43SB8LA000021
50GK43SB1LA000023
50GK43SB5LA000025
50GK43SB7LA000026
50GK43SB5LA000073
50GK43SB1LA000071
50GK43SBXLA000070
50GK43SB2LA000063
50GK43SBXLA000053
50GK43SB0LA000062
50GK43SB7LA000107
50GK43SBXLA000067
50GK43SB2LA000077
50GK43SB7LA000091
50GK43SB2LA000094
50GK43SB7LA000074
50GK43SB6LA000115

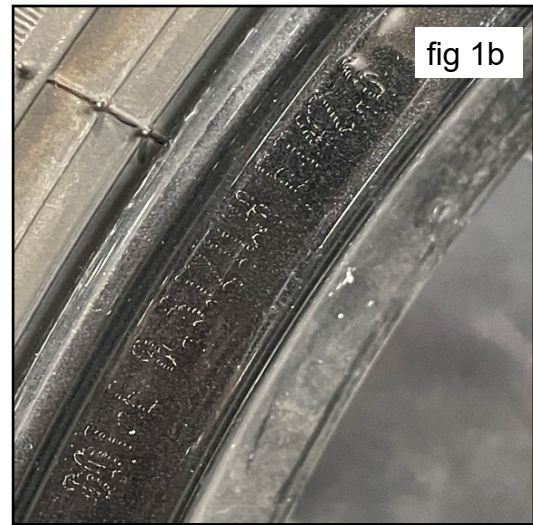
Karma Automotive Bulletins and service documents are intended for use by experienced and trained Technicians. If you lack the skills, tools, equipment and a suitable workshop for any procedure described in this document, we suggest you leave such repairs to a Karma retailer and service provider. See your service provider for advice on whether your vehicle may benefit from the information contained within this document. The information contained in the Karma Bulletin is accurate at the date of publication. However, Karma Automotive regularly updates technical information. Please check with your Karma Automotive Retailer and Karma Automotive service provider that the bulletin you intend to use contains the latest available information.

Title: Rim Marking Inspection

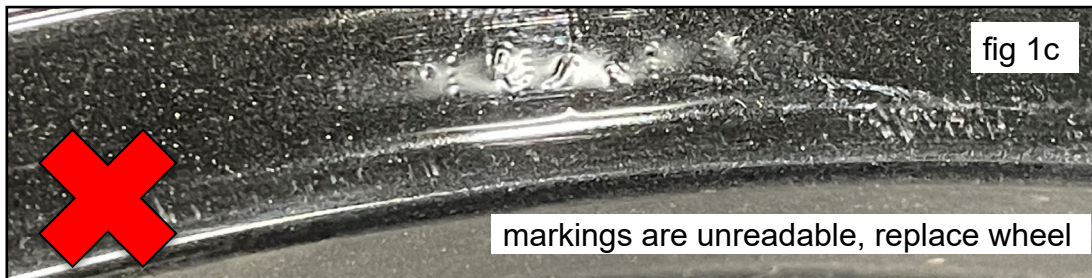
Applicability: VINs on list
Region: All

Procedure Overview:

1. With the vehicle on a hoist inspect the wheel rims. The markings are found on the “inside rim” not the curb side of the wheel. There are etchings which should be visible (fig 1a). These will indicate the wheel size, along with a Karma part number also being visible (fig 1b).



The front wheel and tire are shown here (fig 1a), the markings are indicated by the arrow. The detail of the front rim markings is seen in (fig 1b). The wheel part number is also etched along the rim edge. Again if these etchings are not legible, wheel replacement is required. Shown in detail (fig 1c) is not acceptable, and will be replaced.



The part number for the front 21 x 8.5 Twin Forged Wheel is **C131124101902AA** or **C131124101902AJ** consult with parts department for the appropriate wheel finish.

The front tires are Pirelli P-zero XL BW Summer 245/40R21 or Pirelli Scorpion Winter 255/40R21.

Karma Automotive Bulletins and service documents are intended for use by experienced and trained Technicians. If you lack the skills, tools, equipment and a suitable workshop for any procedure described in this document, we suggest you leave such repairs to a Karma retailer and service provider. See your service provider for advice on whether your vehicle may benefit from the information contained within this document. The information contained in the Karma Bulletin is accurate at the date of publication. However, Karma Automotive regularly updates technical information. Please check with your Karma Automotive Retailer and Karma Automotive service provider that the bulletin you intend to use contains the latest available information.

Title: Rim Marking Inspection

Applicability: VINs on list
Region: All



fig 2a



fig 2b

The Rear wheel and tire are shown here (fig 2a). The detail of the front rim markings is seen in (fig 2b). Again if these etchings are not legible, wheel replacement is required.

3. If the markings are obscured or not visible, replacement of the wheel or wheels (**tires are not to be replaced under warranty**) is required by Karma. These wheels (not the tires)are to be returned to Karma Automotive.

4. Create a TSS case and provide images of the vehicle rims and markings, if they are present or not.

Wheel - Twin Forged 21 x 9.0 Rear **C131124202502AA** or **C131124202502AJ**
 consult with parts department for the appropriate wheel finish.

The Rear tires are Pirelli Pzero XL BW Summer 265/40R21 or Pirelli Scorpion Winter 265/40R21.

Karma Automotive Bulletins and service documents are intended for use by experienced and trained Technicians. If you lack the skills, tools, equipment and a suitable workshop for any procedure described in this document, we suggest you leave such repairs to a Karma retailer and service provider. See your service provider for advice on whether your vehicle may benefit from the information contained within this document. The information contained in the Karma Bulletin is accurate at the date of publication. However, Karma Automotive regularly updates technical information. Please check with your Karma Automotive Retailer and Karma Automotive service provider that the bulletin you intend to use contains the latest available information.

Type: Campaign
 Year: 2022
 System: Chassis
 Sequence: 01

Title: Rim Marking Inspection

Applicability: VINs on list
Region: All

PARTS REQUIRED:

PART NUMBER	DESCRIPTION	QUANTITY
	N/A	

SHOP SUPPLIES if Required:

PART NUMBER	DESCRIPTION	QUANTITY
	N/A	

SPECIAL TOOLS:

DESCRIPTION
N/A

CAUSAL PART:

PART NUMBER	DESCRIPTION
C131124101902AA	Sport Forged Wheel

LABOR CODES:

CODE	DESCRIPTION	TIME	DEFECT CODE
54-10-03-05	Wheel Inspection	0.5	54-10-03-17

WARRANTY DISPOSITION: This repair is covered under the New Vehicle Limited Warranty, in effect for four (4) years from the in-service date with no mileage limitation.

Karma Automotive Bulletins and service documents are intended for use by experienced and trained Technicians. If you lack the skills, tools, equipment and a suitable workshop for any procedure described in this document, we suggest you leave such repairs to a Karma retailer and service provider. See your service provider for advice on whether your vehicle may benefit from the information contained within this document. The information contained in the Karma Bulletin is accurate at the date of publication. However, Karma Automotive regularly updates technical information. Please check with your Karma Automotive Retailer and Karma Automotive service provider that the bulletin you intend to use contains the latest available information.