

SS 3094-FTL 2022 New Cascadia with Functional Side Guard Assist and Incorrect Dash Labels

Applicable Vehicles

Unknown quantity of New Cascadia built after September 4, 2021 and before January 4, 2022

Symptoms

Trucks were built near the end of the SGA component shortage issue

Trucks have a complete and functional Side Guard Assist system (BOM 73K-C00108)

Label 24-02069-000 that says "Side Guard Assist is not functional on this vehicle" was installed when it should not have been installed (two places: dash A panel and right A pillar)

Issue

Dash labels are installed at a work station downstream from the work station where the SRR sensors are installed. The label installer did not consistently confirm the BOM callout for the label. As a result, labels were installed on some trucks with a fully functional Side Guard Assist feature, when the labels should *not* have been applied.

Solution

Confirm that the truck was built with functional Side Guard Assist using the following two steps:

1. Confirm the BOM used on the vehicle using PartsPro: 73K-C00108 is used on trucks with a fully-functional Side Guard Assist feature.

2. Monitor the SRRR01T system using the Detroit Assurance tab in DiagnosticLink's Instrumentation panels. A functional system will provide status information on this tab. See the screen shot for more details.

After verification that the truck has functional Side Guard Assist, the dash labels can be removed, and no further action is required.

Labels :

New Cascadia **Other System**

Add tags

Attachments



0 Kudos

Comment



2021 Freightliner New Cascadia 126 Day Cab 6 x 4 Truck-Tractor

VIN: [REDACTED] Engine: DDEC16-DD15
ESN: [REDACTED] Transmission: DT12-DT12 OA

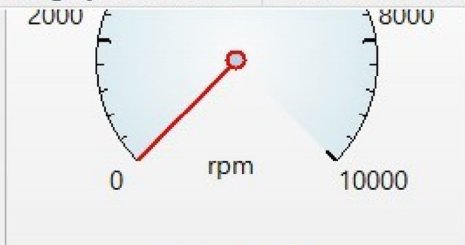
Instrumentation

- Engine Brake
- FIS Fuel Quantity
- Hill Start Aid (HSA)
- Intelligent Powertrain Management
- Mechanical
- MSC Stalk and Switch Inputs
- MSF Subbus Switches
- Switches
- TCM Global Status
- Transmission
- Transmission Learned Values
- User
- Antilock Braking System (ABS)
- Auto Traction Control, Electronic Stability
- Cascadia Cruise Control
- Cascadia J1939 Datalink Test
- Data Stream

VRDU02T

Power Supply

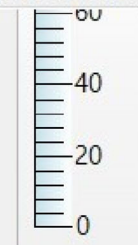
VRDU02T



Engine Speed



Vehicle Speed



Accelerator Pedal Position

VRDU02T

<no instrument>

VRDU02T

<no instrument>

VRDU02T

<no instrument>

VRDU02T

12.22

OK

11.9

Low

STAT

0.074

0.0000

0.0049

Relevant Object

VRDU02T

<no instrument>

VRDU02T

<no instrument>

VRDU02T

<no instrument>

VRDU02T

<no instrument>

VRDU02T

RDF02T

Distance Longitudinal m

sna

Relative Speed Longitudinal mph

sna

Stationary Object

VRDU02T

<no instrument>

VRDU02T

<no instrument>

VRDU02T

<no instrument>

VRDU02T

<no instrument>

VRDU02T

RDF02T

Distance Longitudinal m

sna

Alignment

Azimuth

EOL aligned

Elevation

EOL aligned

FoV_AnglFt_Cval_SRRX

13.0

FoV_AnglRear_Cval_SRRX

13.0