



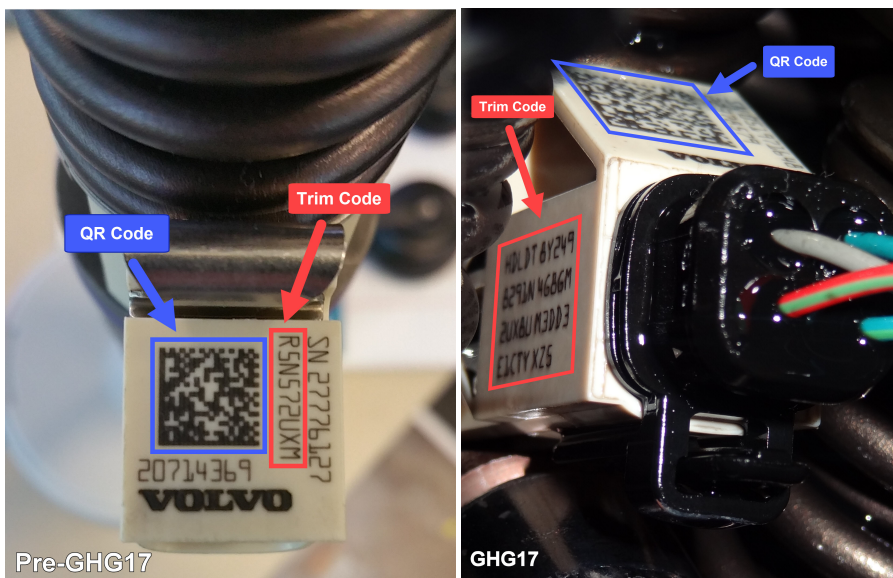
## Mack Chassis - Injector Trim Code Calibration (Programming) with Premium Tech Tool ( PTT ) – US10+OBD13 And Newer (Includes Common Rail Fuel System) Emissions, Common Model Year 2014 And Newer



> Internal Content

For US13 and newer chassis, trim code programming is now located under the Calibrate tab in PTT. Function Group 23, Operation [2317-07-03-01 Injectors](#) now allows the use of a hand scanner to read the Quick Response ( QR ) code printed on each injector tag.

With the introduction of the common rail fuel system for US17+OBD16 and newer emissions, a new injector design has also been released with improved performance. The F2 injector uses a 38 digit trim code which allows calibration throughout the performance range for precise fuel metering in any condition. Examples of pre-US17 and US17 injector tags and trim codes can be seen below:



Note that both versions' tags include QR codes.

Due to the complexity of the new Trim Code format, a hand scanner is the primary method to be used for entering codes into PTT when replacing injectors or switching Engine Management System ( EMS ) modules. Service News bulletin [SNM 16 - 045 - Quick Response \( QR \) Code Scanners Are Available For Setting Injector Trim Codes \( US13 OBD To Current \)](#) also lists additional scanners that can be used. The bulletin

Live UI found [here](#).



Tags

[k21739141](#)

[mack](#)

### Related links and attachments

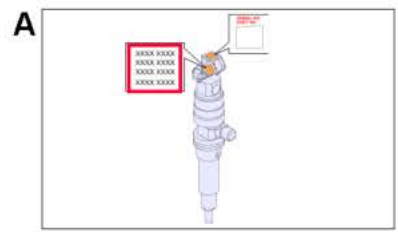
No links or attachments available



### Feedback

[Give feedback](#)

to help improve the content of this article



### 2371-07-03-01 Injectors

Simulation

Information >> Conditions >> Execution >> Result

#### Purpose

Program the Engine control module (ECM) with the injector trim codes

#### Selections

Select the illustration corresponding to the method or test to be performed

A

Manual entry

B

Special tool: 88890187 Barcode Scanner