



MODEL

E-Series	Model Description	Production Date
F95	X5 M Sports Activity Vehicle	September 30, 2021 – December 14, 2021
F96	X6 M Sports Activity Coupe	September 30, 2021 – December 14, 2021
G05	X5 Sports Activity Vehicle	September 30, 2021 – December 14, 2021
G06	X6 Sports Activity Coupe	September 30, 2021 – December 14, 2021
G07	X7 Sports Activity Vehicle	September 30, 2021 – December 14, 2021

SITUATION

Due to a manufacturing defect, the vehicles were built without the engine oil label. The label shows the oil viscosity.

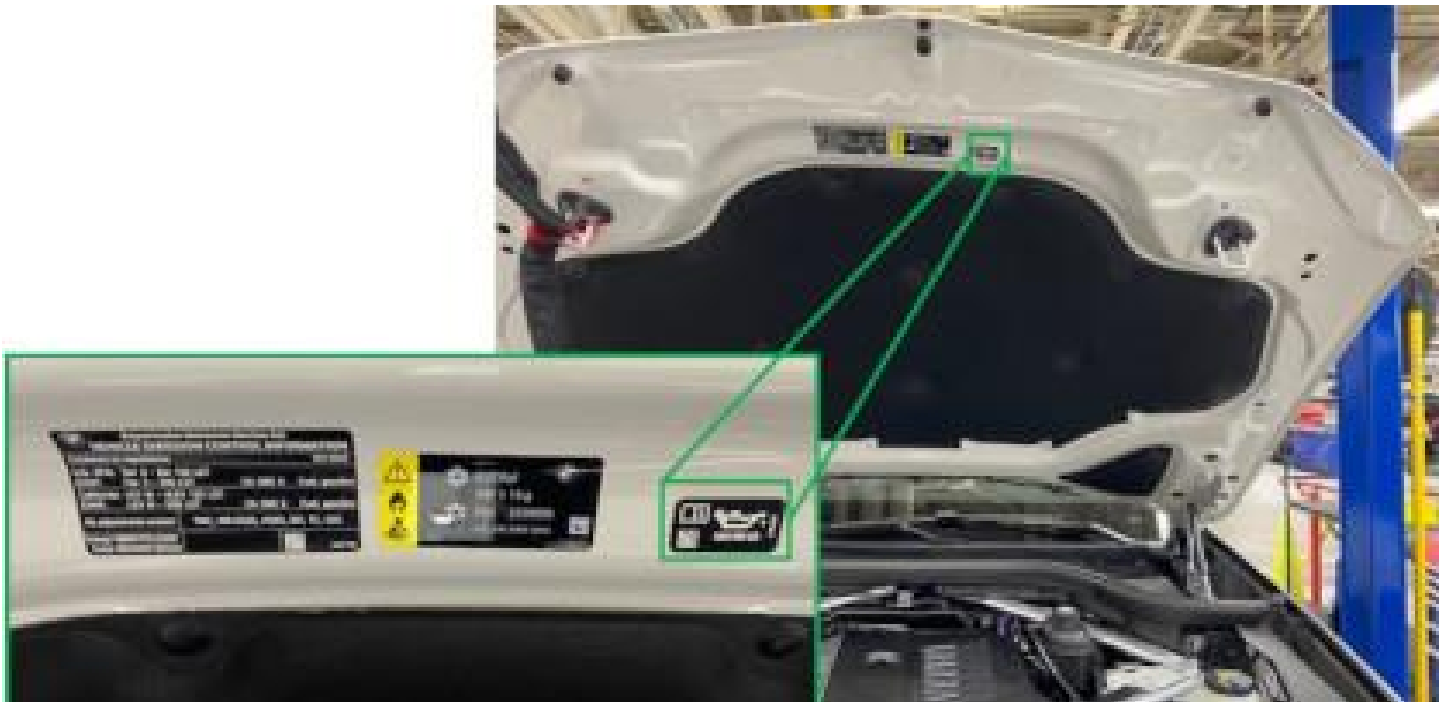
CORRECTION

Attach the engine oil label to the underside of the hood.

PROCEDURE

Attach the engine oil label in the position shown below:

- The exact position is not important, but the bottom edge must be level with/parallel to that of the adjacent label so that it is not tilted



PARTS INFORMATION

Only use and invoice the part number below that apply.

Performing a part number look-up in ETK (EPC) by VIN or model in place of using/invoicing the following part number may result with the wrong part numbers being invoiced and installed, this could delay the payment of the claim.

Part Number	Description	Quantity
71 22 8 655 034	Label "engine oil"	1

CLAIM INFORMATION

Reimbursement for this Service Action will be via normal claim entry utilizing the applicable work package information below and the part number listed above.

Defect Code:	0071930200	---
---------------------	-------------------	-----

Completion before the first vehicle delivery to a customer or the vehicle is already in the workshop

Work Pkg	Labor Operation	Description (Plus work)	Labor Allowance
# 1	00 71 972	Attaching the engine oil sign (label)	3 FRU

Or:

The vehicle arrives at your center and this Service Action shows open (No other Main work will be performed or claimed during this workshop visit)

Work Pkg	Labor Operation	Description (Main work)	Labor Allowance
# 2	00 71 399	Attaching the engine oil sign (Label)	5 FRU

Only one of the flat rate labor operation codes listed above can be used for claim submission and reimbursement. Also, only one Main work flat rate labor operation code can be claimed per workshop visit.

Claim Repair Comments

Only reference the SIB number and the work package (Pkg) number performed in the RO technician notes and the claim comments (For example: B51 01 22 WP 1), unless otherwise required by State law.

QUESTIONS REGARDING THIS BULLETIN

Technical inquiries	Submit feedback at the top of this bulletin
Warranty inquiries	Please contact the Warranty department by either using the Live Chat that's available in the Warranty Documentation Portal or through IDS by selecting Coverage, Policy, Coding Questions and Mileage Corrections
Parts inquiries	Submit an IDS ticket to the Parts Department