

**SERVICE ACTION: REPLACE THE MECHANICAL COOLANT PUMP**

This Service Information Bulletin (Revision 1) replaces SI B11 05 21 **dated September 2021**.

**What's New** (Specific text highlighted):

- Repair Procedure updated
- Parts Section updated
- Claims Information: Labor operations are now in AIR

Please perform the procedure outlined in this Service Information on all affected vehicles before customer delivery. In the event the customer has already taken delivery of the vehicle, please perform the procedure the next time the vehicle is in the shop.

Please perform the procedure outlined in this Service Information on all affected vehicles before customer delivery. In the event the customer has already taken delivery of the vehicle, please perform the procedure the next time the vehicle is in the shop.

**MODEL**

G05 (X5 Sports Activity Vehicle)	G06 (X6 Sports Activity Coupe)	G07 (X7 Sports Activity Vehicle)	G20 (3 Series Sedan)
G22 (4 Series Coupe)	G23 (4 Series Convertible)	G30 (5 Series Sedan)	

**AFFECTED VEHICLES**

This Service Action involves G05, G06, G07, G20, G22, G23 and G30 vehicles produced from September 2020 to May 24, 2021.

Vehicles which require this Service Action to be completed will show it as "Open" when checked either in AIR, the "Service Menu" of DCSnet (Dealer Communication System) or with the Key Reader.

**SITUATION**

The belt pulley on the mechanical coolant pump may fracture allowing the engine drive belt to come off the coolant pump and alternator.

**CORRECTION**

Replace the coolant pump

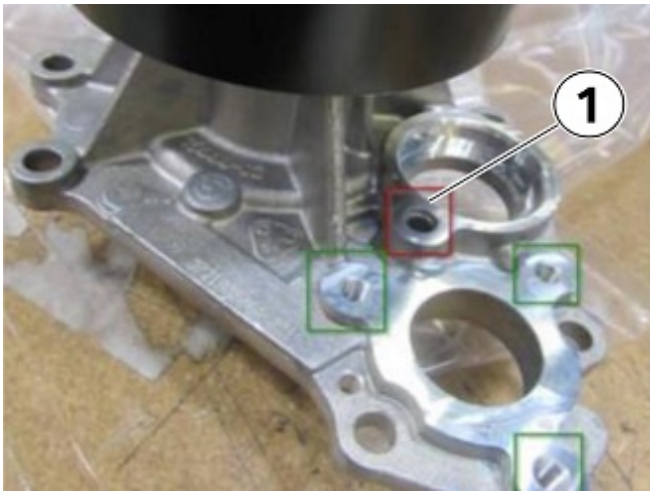
**PROCEDURE**

Follow Repair Instruction **11 51 000 Removing and installing/replacing the coolant pump**.

**NOTE:** The bolt hole for the coolant flange (1) may not be threaded. The self-tapping screw from the original water pump must be re-used.

Follow this tightening sequence (threads or no threads present)

1. Tighten to 12.5 Nm
2. Loosen the screw 360 degrees (one full turn)



3. Tighten the screw again to 12.5 Nm

## **PARTS INFORMATION**

Please monitor the Parts Matrix for ordering information.

Only use and invoice the part numbers when applicable.

Performing a part number look-up in ETK (EPC) by VIN or model in place of using/invoicing the following part numbers may result with the wrong part numbers being invoiced and installed, this could delay the payment of the claim.

Part Number	Description	Quantity
11 51 5 A44 4F4	Coolant pump (48V mild hybrid technology)	1
11 51 8 482 260	O-ring	1
11 53 8 674 931	O-ring (28.7x2.5)	1
11 53 8 678 045	Seal (29.8x4.6x2.2)	1
11 11 8 664 905*	Shaft seal (55x68x8)	1
83 19 2 468 442	Coolant	As needed

\*TC Approval not required

Other small parts such as screws, nuts and seals, which must be replaced according to the ISTA repair instructions, must be selected from the Electronic Parts Catalogue according to the respective vehicle type and invoiced under the special defect code.

## **CLAIMS INFORMATION**

Reimbursement for this Service Action will be via normal claim entry utilizing the applicable work package information below, and when required, the part numbers listed above.

<b>Defect Code:</b>	<b>0011160600</b>	<b>G0x G2x G3x B58C B58D Replacing coolant pump</b>
---------------------	-------------------	---

**Completion before the first vehicle delivery to a customer or the vehicle is already in the workshop**

Work Pkg	Labor Operation	Description (Plus work)	Labor Allowance
# 1	00 70 985	Replacing the coolant pump	Refer to the AIR
Or:			
# 2	00 70 986	Replacing the coolant pump and deleting fault memory (Vehicle test) (CC message already present)	Refer to the AIR

Or:	---	---	---
# 3	00 70 987	Vehicle was already taken care of through another repair or Technical Campaign	1 FRU

**\*Please refer to the attachment for the applicable FRU allowances until these repair times show in AIR.**

Or:

**The vehicle arrives at your center and this Service Action shows open (No other Main work will be performed or claimed during this workshop visit)**

Work Pkg	Labor Operation	Description (Main work)	Labor Allowance
# 4	00 70 425	Replacing the coolant pump	Refer to the AIR
Or:			
# 5	00 70 426	Replacing the coolant pump and deleting fault memory (Vehicle test) (CC message already present)	Refer to the AIR
Or:	---	---	---
# 6	00 70 427	Vehicle was already taken care of through another repair or Technical Campaign	1 FRU

Only one of the flat rate labor operation codes listed above can be used for claim submission and reimbursement. Also, only one Main work flat rate labor operation code can be claimed per workshop visit.

**Claim Repair Comments**

Only reference the SIB number and the work package (Pkg) number performed in the RO technician notes and the claim comments (For example: B11 05 21 WP 1), unless otherwise required by State law.

If additional work was required due to this issue, explain the why and what on the repair order and in the claim comments

And, as needed:

**Sublet – Bulk Materials (RO and Claim Comments Required)**

<b>Sublet Code 4</b>	Up to \$25.00	Reimbursement for the repair-related bulk material (Do not use the BMW part number for claim submission)
----------------------	---------------	--

Sublet reimbursement calculation for claiming the applicable repair-related bulk material (BMW part numbers) is at the dealer net price amount for the quantity used plus your center’s handling.

BMW Antifreeze/Coolant: Claim the corresponding sublet dollar amount for the quantity needed to replace what was drained with a 50/50 coolant/water solution.

Enter this material cost in sublet and itemize the amount on the repair order and in claim comment section.

**Alternative Mobility Solution (AMS) for Vehicle Owners (RO and Claim Comments Required)**

This Service Action repair qualifies for Alternative Mobility Solution (AMS) expense reimbursement, claim this item under the Defect Code noted above as follows:

Sublet Code 2 - Itemize the AMS sublet amount on the repair order and in the claim comment section.

Please refer to [SI B01 29 16](#) for additional information.

### **QUESTIONS REGARDING THIS BULLETIN**

Technical inquiries	Submit feedback at the top of this bulletin
Warranty inquiries	Please contact the Warranty department by either using the Live Chat that's available in the Warranty Documentation Portal or through IDS by selecting Coverage, Policy, Coding Questions and Mileage Corrections
Parts inquiries	Submit an IDS ticket to the Parts Department

Supporting Materials