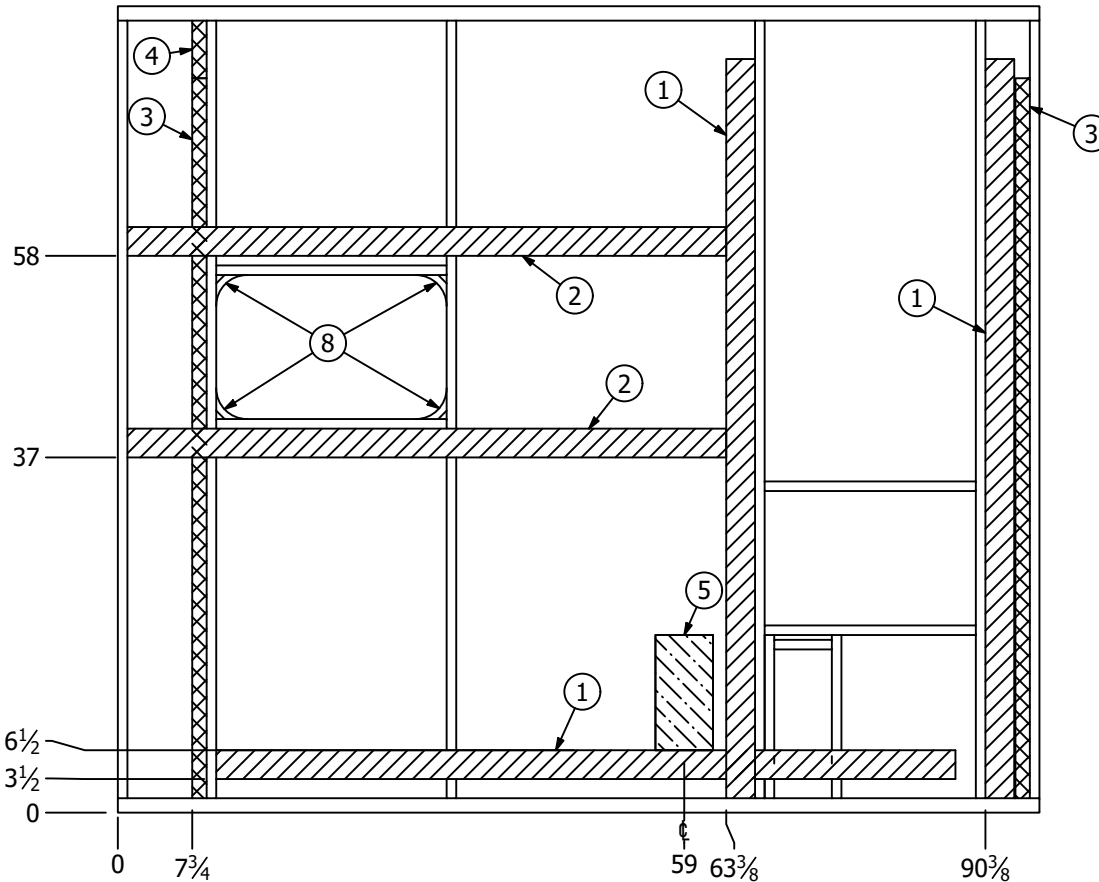


PARTS LIST		
ITEM	QTY	DESCRIPTION
1	3	3" x 77" x .019-EGS Backer
2	2	3" x 62 3/8" x .019-EGS Backer
3	2	1" x 1 1/2" x 75" - Plastic Wire Channel
4	1	1" x 1 1/2" x 6" - Plastic Wire Channel
5	1	12" x 6" x 3/4" - PLYWOOD
6	2	48" x 90" - 2.7 MM - LAUAN PANEL
7	2	48" x 84" - 2.7 MM - DÉCOR PANEL
8	4	1 x 3.2" Radius Block
9	1	96" x 90" - FIBERGLASS PANEL - (DEFAULT)



- EGS BACKER
- WIRE CHANNEL
- PLYWOOD

VIEWED FROM INSIDE

MODEL LIST
T25RK

VIBE / EXTREME LITE
PLANT #59

<small>FOREST RIVER INDUSTRIES, INC., CLAIMS PROPRIETARY RIGHTS IN THE MATERIAL DISCLOSED HEREIN. NEITHER THIS DRAWING NOR ANY REPRODUCTION THEREOF MAY BE USED TO MANUFACTURE ANYTHING SHOWN HEREON WITHOUT PERMISSION IN WRITING FROM FOREST RIVER INC.</small>		
BY: MB	APPROVED BY:	FRACTIONAL TOLERANCE: +/- 1/16
DATE: 4/23/2018	SHEET #: 2 OF 2	ANGULAR TOLERANCE: +/- 1°
DESCRIPTION:		
REAR WALL ASSEMBLY		
REV: I	VENDOR PART#:	DRAWING #: 09- 000101

REVISION HISTORY				
REV	ECO #	DESCRIPTION	DATE	BY
G	ECO-21-0430	POWER CORD BACKER MOVED UP 5"	6/23/2020	KCH
H	21-0655	ADDED PANEL LAYOUT	7/31/2020	MB
I	22-0275	ADDED OUTSIDE SHOWER CUTOUT	9/1/2021	MB