



# Preliminary Information

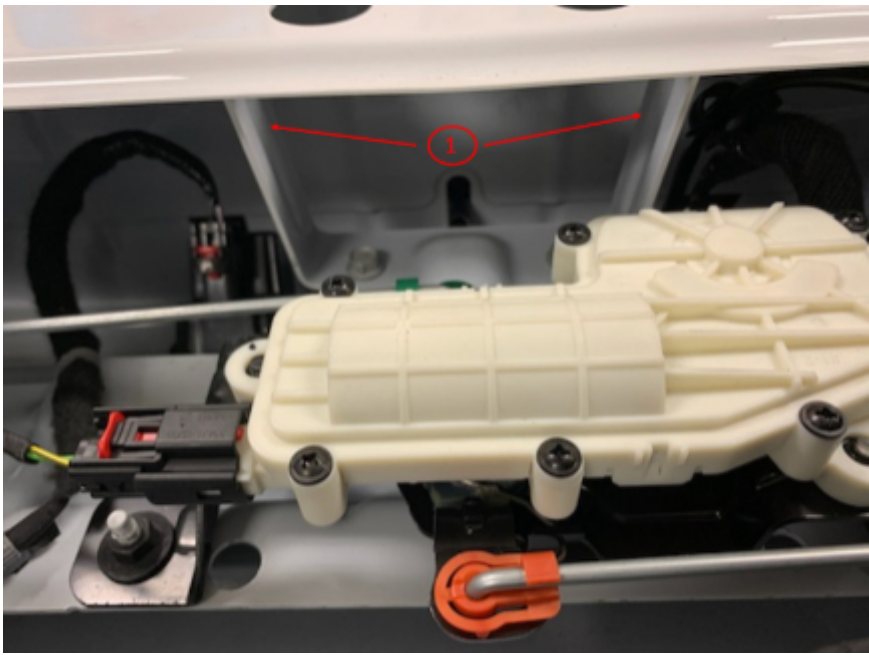
## PIT5886 Tailgate Latch Handle Disengaged From Tailgate

### Models

| Brand:    | Model:         | Model Years: | VIN: |     | Engine: | Transmissions: |
|-----------|----------------|--------------|------|-----|---------|----------------|
|           |                |              | from | to  |         |                |
| Chevrolet | Silverado 1500 | 2019 - 2022  | All  | All | All     | All            |
| GMC       | Sierra 1500    | 2019 - 2022  | All  | All | All     | All            |

|                            |                                                                                                                                                                                                                                                 |
|----------------------------|-------------------------------------------------------------------------------------------------------------------------------------------------------------------------------------------------------------------------------------------------|
| Involved Region or Country | North America                                                                                                                                                                                                                                   |
| Additional Options (RPO)   | QK1 - standard endgate                                                                                                                                                                                                                          |
| Condition                  | Some customers may comment that the tailgate latch handle has disengaged from the tailgate, as shown below.                                                                                                                                     |
| Cause                      | The cause of this concern could be forces that are applied to a certain area of the tailgate inner panel being transferred through the standoff brackets (1) to the tailgate handle bracket disengaging the tailgate latch handle, shown below. |

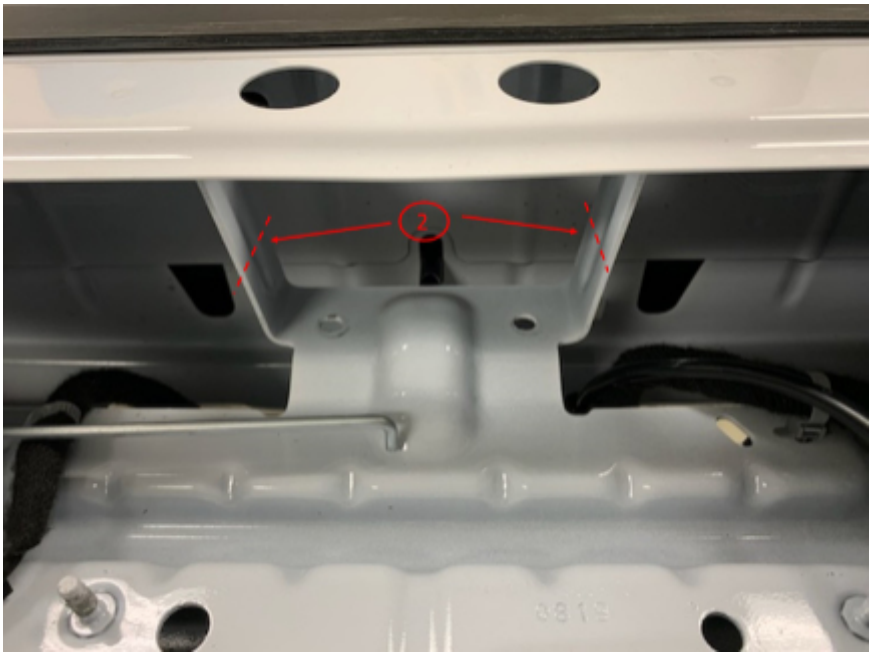




**Correction:**

To correct this concern, follow the procedure below to remove part of the standoff brackets(1). Removal of the standoff brackets does not hinder the tailgates durability or performance.

- Open the tailgate.
- Remove the tailgate inner access cover panel.
- Remove the tailgate latch handle. The handle electrical connectors do not need to be disconnected. The handle will hang down by the wiring, thus holding the wiring down and away while performing the repair.
- Remove the tailgate lock actuator assembly.
- In the middle of each standoff bracket mark a cut line (2), as shown below.



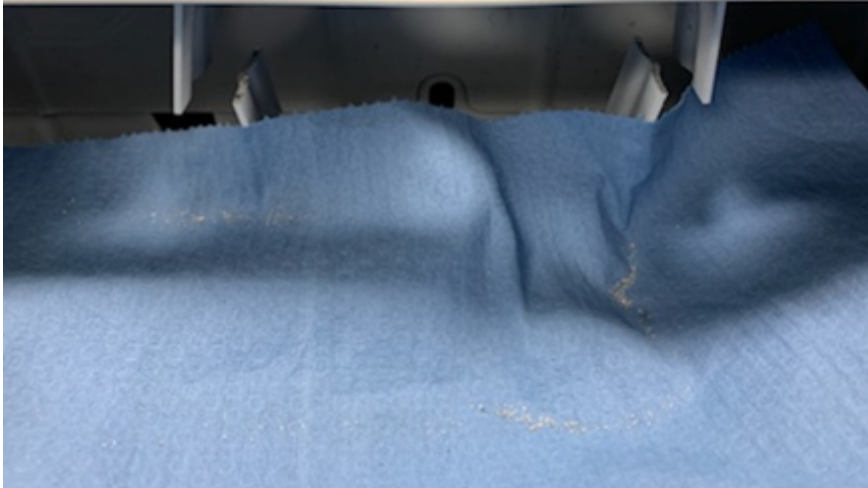
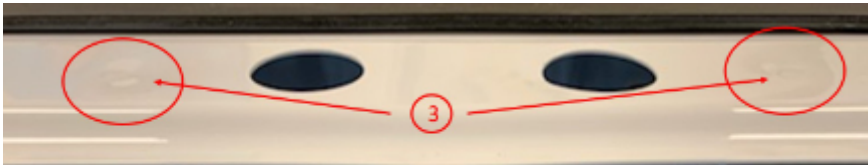
- Using an oscillating or similar tool, cut through each standoff bracket, as shown below.

**Note:** Do not use an air chisel or similar tool that could bend or deform the brackets.



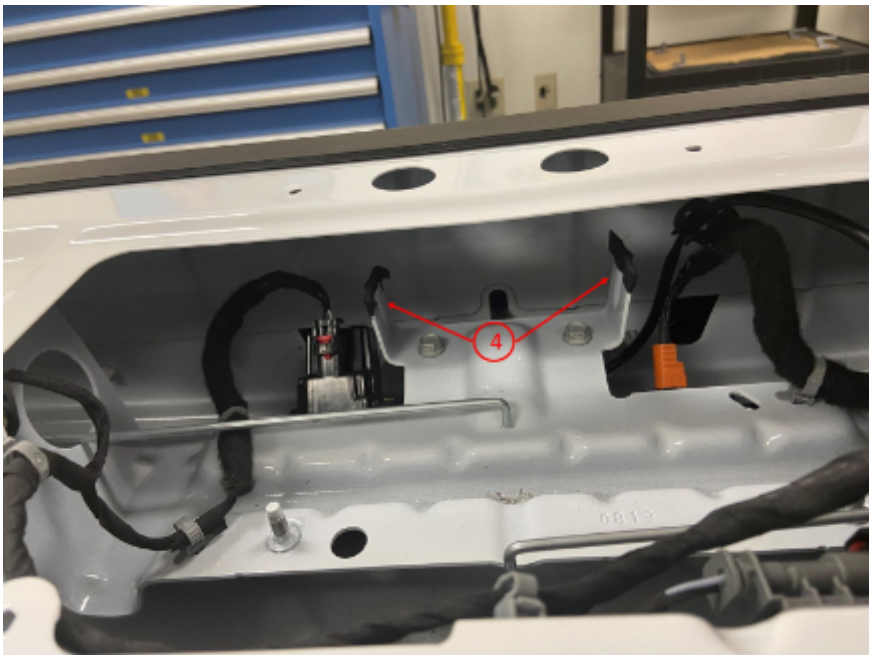
- After each standoff bracket has been cut through, next locate and drill out each spot weld (3) that attach the brackets to the inner panel, as shown below. There is only one spot weld per bracket.

**Note:** Instead of drilling the spot welds, the bracket could be twisted/rocked back and forth to break the spot weld. Discard the removed brackets.

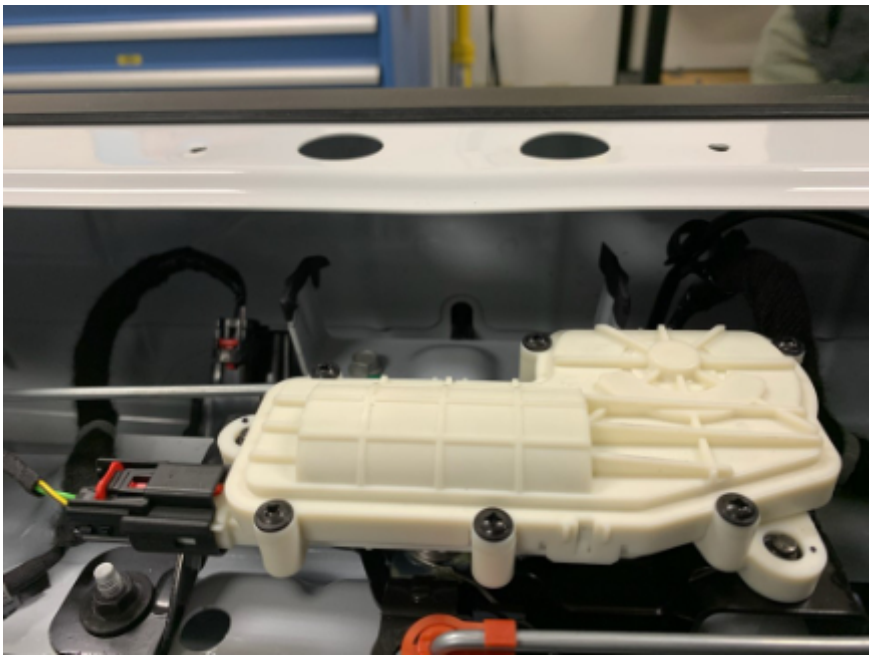


- Deburr the remaining standoff brackets and spot weld holes. Then apply tape to the ends of the standoff brackets(4), as shown below. Note: Because the tailgate is made from aluminum there is no need for rust protection.





- Vacuum / Remove any remaining metal debris and reassemble the vehicle. Shown below is what the finished repair should look like before installing the tailgate inner access cover panel.



### Warranty Information

For vehicles repaired under the Bumper-to-Bumper coverage (Canada Base Warranty coverage), use the following labor operation. Reference the Applicable Warranties section of Investigate Vehicle History (IVH) for coverage information.

| Labor Operation                                          | Description                              | Labor Time |
|----------------------------------------------------------|------------------------------------------|------------|
| 2086418*                                                 | Remove Tailgate Handle Standoff Brackets | 0.5 Hr.    |
| *This is a unique Labor Operation for Bulletin use only. |                                          |            |

### Additional SI Keywords

break broke broken camera disengage end gate loose out plate pop popped release retainer stand switch tail

### Version History

|          |                          |
|----------|--------------------------|
| Version  | 1                        |
| Modified | 01/20/2022 - Created on. |

