



Preliminary Information

PIT5600D Dent/Ripple Appearance Around Wheel Well Opening

Models

Brand:	Model:	Model Years:	VIN:		Engine:	Transmissions:
			from	to		
Chevrolet	Colorado	2015 - 2022	All	All	All	All
GMC	Canyon	2015 - 2022	All	All	All	All

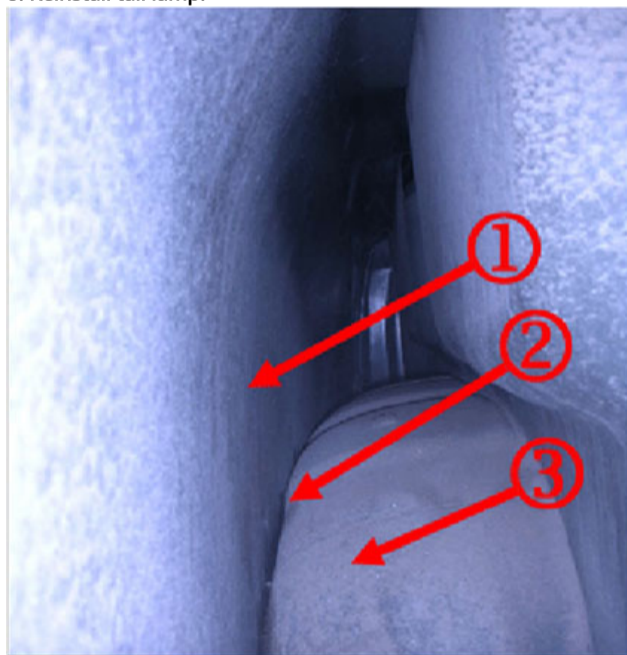
Involved Region or Country:	North America
Condition:	Raised dents or ripple appearance in the side outer panel of the cargo box around the perimeter of the wheel house opening.
Cause:	Lodging of stone/aggregate/debris between the wheelhouse, and the side outer panel.

Correction:

Fill the gap between the bed side and wheelhouse.

Service Procedure:

1. Remove the tail lamp to access the inner area of the side outer panel above the wheelhouse, see picture below.
2. Inspect for any stone/aggregate/debris. Remove as needed using a power washer and/or shop air blow gun.
3. The use of a body hammer (Snap on, cross peen, short curve, #BF608B, or comparable tool) to lightly tap the side outer panel may help to dislodge any stuck stone/aggregate/debris.
4. Access the rear of the inner wheelhouse area through the tail lamp cavity; and the front of the wheelhouse from under the vehicle, and coat the inner hem of the wheel house to side outer panel, with 3M Rust Fighter I, or equivalent, see latest version of [01-08-51-003](#).
5. Allow sufficient time for this to cure about 5-7 minutes, or according to manufacturer's instructions.
6. Apply several coats of Nox Rust X-121B undercoating or equivalent, from the front and rear.
7. Apply enough undercoating to prevent stone/aggregate/debris from getting between the inner wheel house and side outer panel.
8. Reinstall tail lamp.



Parts Information

Description:	Part Number:	QTY
Obtain from Daubert Chemical Company*	Nox Rust X-121B undercoating	As Needed
* Contact Daubert Chemical Company at http://www.daubertchemical.com or 800-914-0034 (Inside U.S.) or 708-496-7350 (Outside U.S.)		

Version History

Version	5
Modified	<p>11/27/2019 - Created on 11/27/2017</p> <p>07/31/2018 - Updated to remove warranty information and include 2018 Model Year.</p> <p>09/18/2019 - Updated to add the 2020 Model Year.</p> <p>12/10/2020 - Updated to add 2021 Model Year.</p> <p>1/14/2022 - Updated to add 2022 Model Year.</p>



GENERAL MOTORS