



SERVICE BULLETIN

Classification: DA19-011C	Reference: NTB19-042C	Date: January 26, 2022
------------------------------	--------------------------	---------------------------



AEB WARNING LIGHT BLINKING

This bulletin has been amended. See **AMENDMENT HISTORY** on the last page.
Please discard previous versions of this bulletin.

APPLIED VEHICLES:	2019-2022 Altima (L34)	2022 Pathfinder (R53)
	2017-2022 Armada (Y62)	2015-2020 Rogue (T32)
	2022 Frontier (D41)	2021-2022 Rogue (T33)
	2020-2022 Kicks (P15)	2016-2018 Rogue Hybrid (T32H)
	2018-2022 LEAF (ZE1)	2017-2022 Rogue Sport (J11)
	2016-2022 Maxima (A36)	2020-2022 Sentra (B18)
	2015-2022 Murano (Z52)	2020-2022 Titan (A61)
	2016 Murano Hybrid (Z52)	2020-2022 Versa (N18)

APPLIED SYSTEMS: Vehicles equipped with a lane camera (see Figure 1)

SERVICE INFORMATION

If the AEB warning light  or  is blinking (but not illuminated steadily) or the customer states it is blinking, and there are no related DTCs, inspect the windshield.

A blinking AEB warning light may occur under the following conditions:

- When contamination or foreign material adhere to the lane camera viewing window on the windshield
- When driving while it is snowing or when frost forms on the lane camera viewing window on the windshield
- When the lane camera viewing window on the windshield is temporarily fogged up

NOTE:

- If DTCs are present in any of the following related systems:

- Laser/Radar,
- ICC/ADAS, or
- Lane Camera,

Refer to the related Electronic Service Manual (ESM) for diagnosis.

- Refer to the following pages for further information.

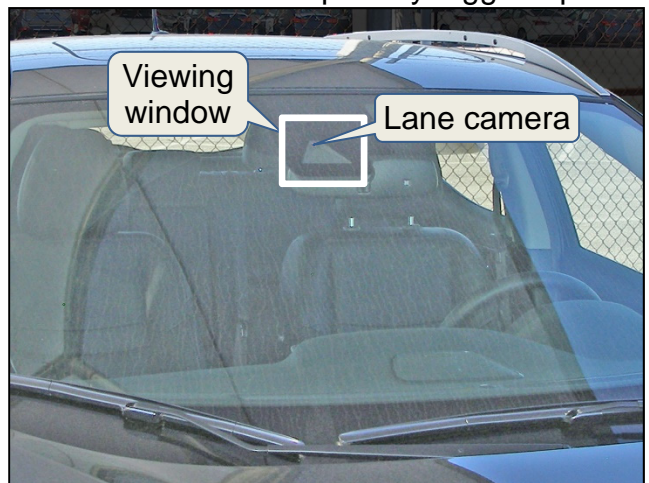
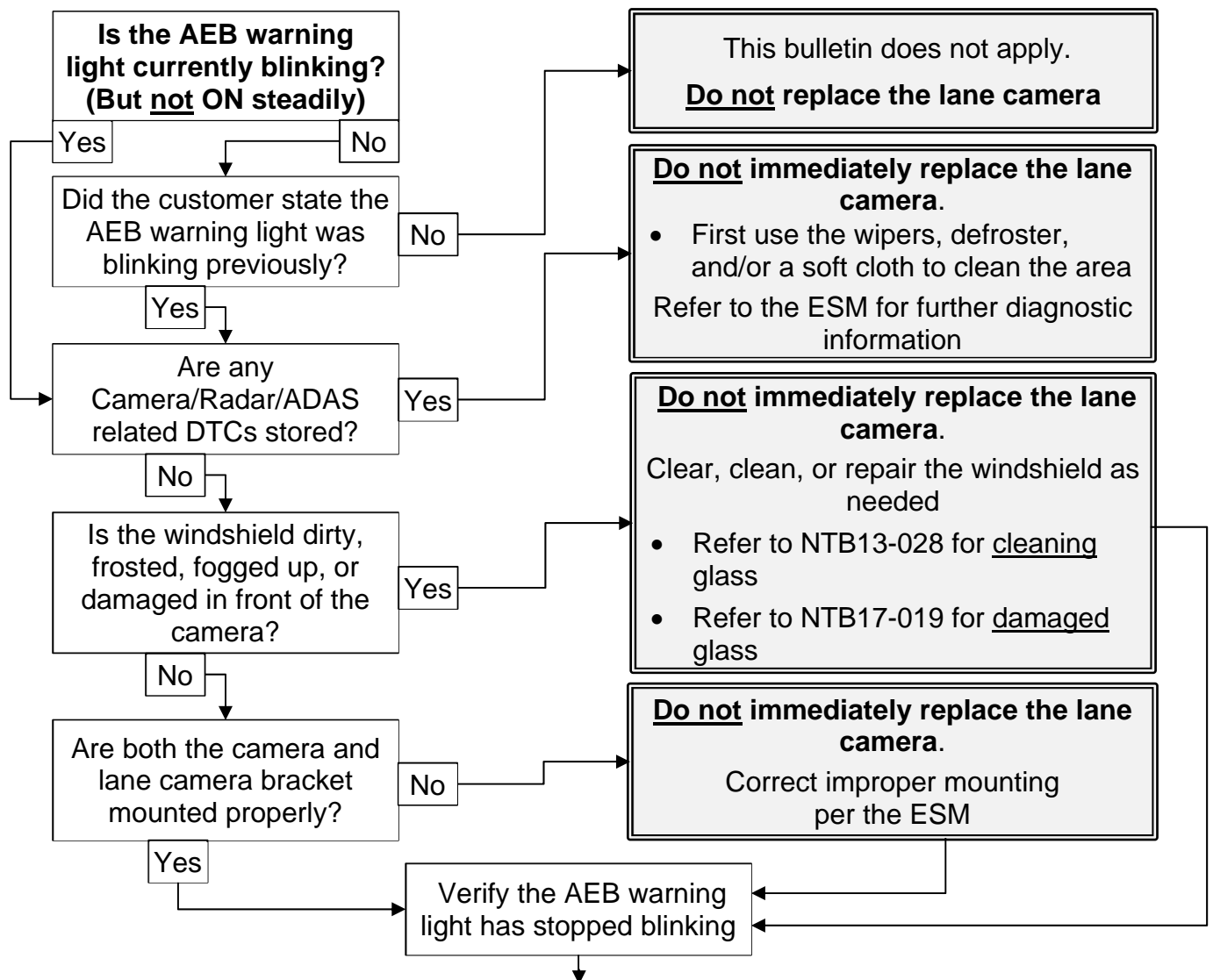


Figure 1

Nissan Bulletins are intended for use by qualified technicians, not 'do-it-yourselfers'. Qualified technicians are properly trained individuals who have the equipment, tools, safety instruction, and know-how to do a job properly and safely. **NOTE:** If you believe that a described condition may apply to a particular vehicle, DO NOT assume that it does. See your Nissan dealer to determine if this applies to your vehicle.

FLOW CHART



Inform the customer the following conditions may cause the AEB warning light to blink:

- Heavy rain or thick fog may cause the light to blink as well. Good use of wipers and keeping the windscreen clean will mitigate some of the issue.
- When contamination or foreign material adhere to the lane camera viewing window on the windshield.
- When driving while it is snowing or when frost forms on the lane camera viewing window on the windshield.
- When the lane camera viewing window on the windshield is temporarily fogged up

Explain to the customer the difference between contamination detection and a malfunction.

During the following conditions the AEB warning light may blink/flash. However when these conditions no longer exist, the AEB will resume automatically:

- Strong light is shining from over the front of the vehicle.
- The cabin temperature is over approximately 104°F (40°C) in direct sunlight.
- The radar sensor picks up interference from another radar source.
- When driving on roads without any road structures or buildings (for example: long bridges, deserts, snow fields, driving next to long walls.

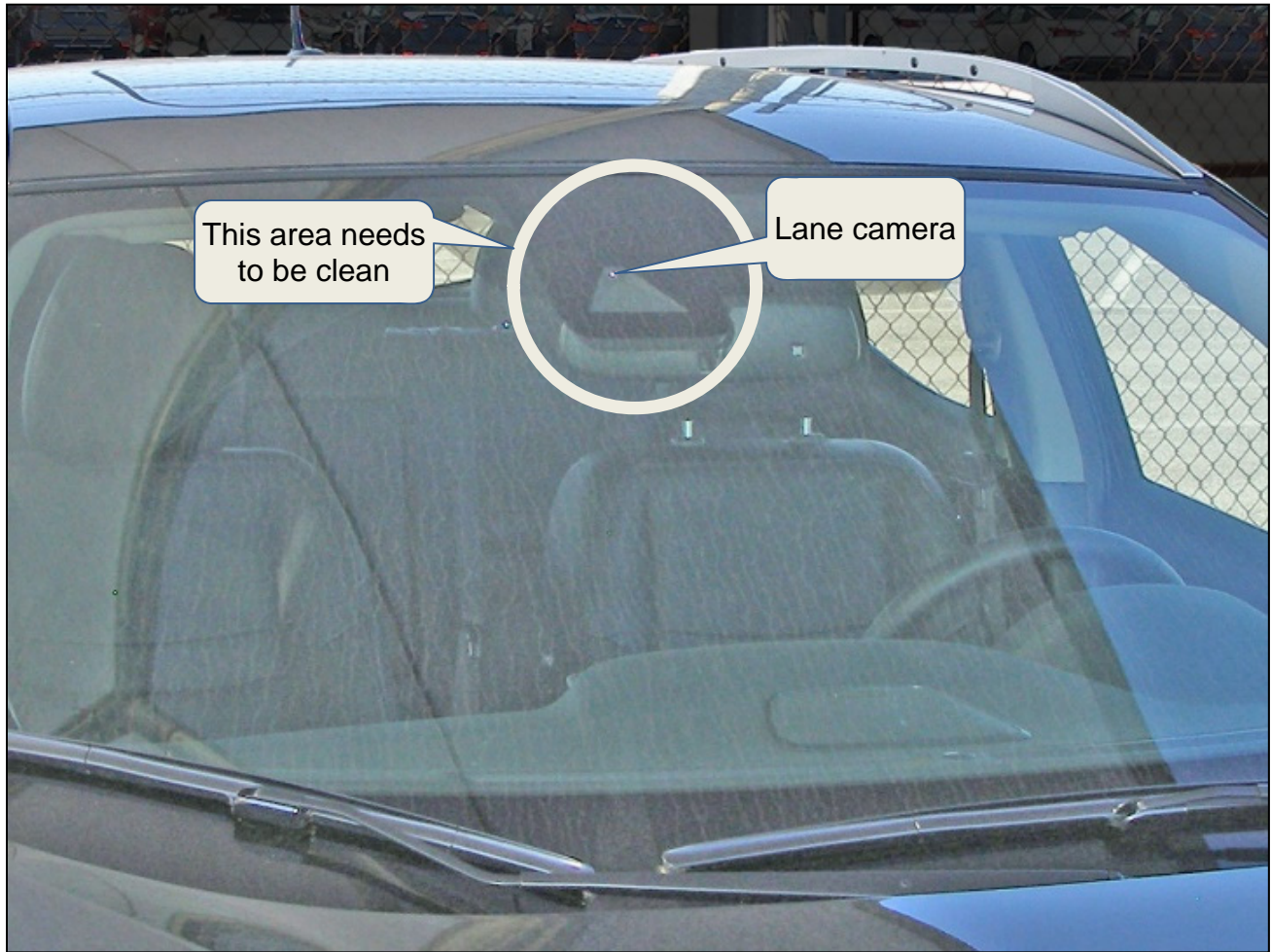


Figure 2

AMENDMENT HISTORY

PUBLISHED DATE	REFERENCE	DESCRIPTION
May 22, 2019	NTB19-042	Original bulletin published
November 5, 2020	NTB19-042a	APPLIED VEHICLES updated
February 3, 2021	NTB19-042b	Classification number updated
January 26, 2022	NTB19-042C	APPLIED VEHICLES updated