



LEISURE
TRAVEL VANS

February 9, 2022



Campaign Update CA#10043

Triple E Recreational Vehicles
A Division of Triple E Canada Ltd.

P: 204 325 4361
F: 204 325 5241

301 Roblin Blvd.
P.O. Box 1230
Winkler, Manitoba CA
R6W 4C4

U.S. Mailing:
P.O. Box 68
Walhalla, ND 58282

LEISUREVANS.COM
TRIPLEERV.COM

«Dealer_Name»
«Address_Line_1»
«City», «State» «ZIP_Code»

Model, VIN #
Coach #

Subject: There is an unsealed hole in the floor visible from under the coach
Affects certain 2021 Wonder W24MB motorhomes

There is an unsealed 76mm hole in the floor visible from under the coach.

Correction:

To correct this situation, follow the SOP to install a white aluminum plate with screws included in this mailing and caulk the perimeter after installed. Please claim the labour to perform the campaign update on a warranty claim.

Labour to perform this Campaign Update: 0.5 hrs / unit

Thank you for your anticipated support in correcting this concern.

Sincerely,

Brad Wall
Customer Service / Warranty Manager

BW/wcw

Enclosure

White Aluminum Plate
5 – screws
SOP – Standard Operating Procedure



LEISURE
TRAVEL VANS

February 9, 2022

Campaign Update CA#10043



Triple E Recreational Vehicles
A Division of Triple E Canada Ltd.

P: 204 325 4361
F: 204 325 5241

301 Roblin Blvd.
P.O. Box 1230
Winkler, Manitoba CA
R6W 4C4

U.S. Mailing:
P.O. Box 68
Walhalla, ND 58282

LEISUREVANS.COM
TRIPLEERV.COM

«Owner_Name»
«Owner_Addr1»
«Owner_Addr2»
«Owner_City», «Owner_Prov» «Owner_Postal_Code»

«Unit», VIN #«Chassis_Serial_Number»
Coach Serial #«Coach_Serial_Number»

Subject: There is an unsealed hole in the floor visible from under the coach
Affects certain 2021 Wonder W24MB motorhomes

There is an unsealed 76mm hole in the floor visible from under the coach.

Correction:

To correct this situation, follow the SOP to install a white aluminum plate with screws included in this mailing and caulk the perimeter after installed. If you choose to have your selling dealer or a RV service center perform the campaign it will be performed at no charge to you. The time needed to perform is approximately 30 minutes. If you choose to have this campaign performed by a service center other than your dealer, prior authorization is required. When completed or if you have any questions contact Leisure Travel Vans at recalls@tripleerv.com

Thank you for your anticipated support in correcting this concern. We sincerely apologize for creating this inconvenience.

Sincerely,

Brad Wall
Customer Service / Warranty Manager

BW/wcw

Enclosure

White Aluminum Plate
5 - screws
SOP – Standard Operating Procedure

SOP06913

Seal the Unused Hole in a W24MB Floor QAAAR 10,043

Department: 32
 People Required: 1
 Time to Complete: 30mins
 Date Created: 1-11-22
 Date Revised:
 Created by Initial: GK806 Verified: B.H.791

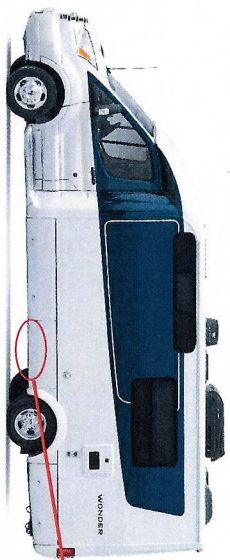
Tools needed to complete:

1. Drill/driver
2. #8 Robertson (square) driver bit.
3. Caulking gun
4. Caulking (White Guertlin, Mono or equivalent)
5. Urethane Expanding Foam

Recall Kit:

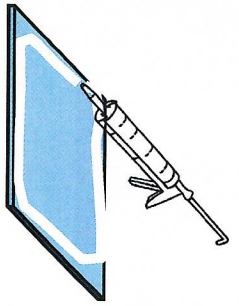
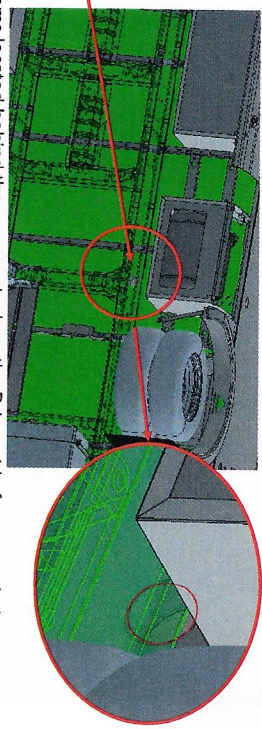
- 200mm (4in) X 200mm (4in) 0.024" aluminum plate
- Five (5) #10 X 3/4" Wafer head screws 141-0211

1



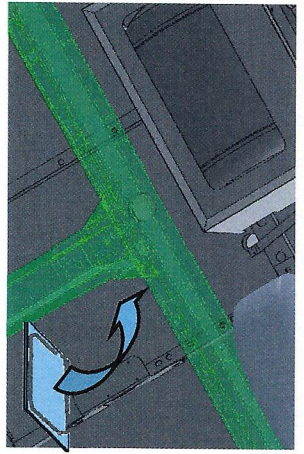
Inspect the under surface of the floor above the Ford chassis frame located behind the propane tank on the Driver side for an open hole. You should be able to feel the opening with your hand. If foam urethane can be felt, no further action is required.

2



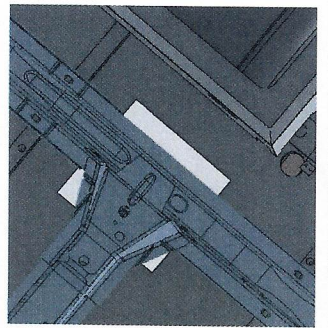
Apply the caulking around the perimeter of the aluminum plate (white side down)

3



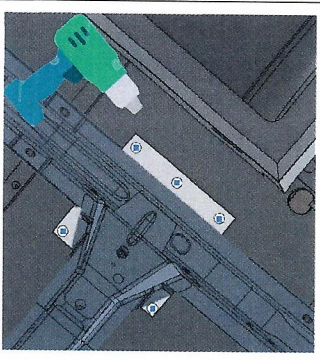
Slide the plate between the floor and the chassis so it will cover the hole with the caulking side to the underside of the floor.

4



Position the plate so it covers the hole and allows access to all 4 corners of the plate to be secured to the floor with screws.

5



Screw the plate to the floor with the five (5) wafer head screws.

6

7

8

CHASSIS VIN#

| |
|-------------------|
| 1FDRU6PG6MKA53146 |
| 1FDRU8PGXMKA16516 |
| 1FDRU8PG1MKA16517 |
| 1FDRU6PG6MKA20602 |
| 1FDRU8PG1MKA16520 |
| 1FDRU6PG1MKA76270 |
| 1FDRU8PGXMKA76280 |