



INSTRUCTION TO SERVICE

ITS60299		1/17/22
SECTION:	410-Tapping Plates	
WRITTEN BY:	Jeff Kosheluk	
SUBJECT:	Rework fire suppression mounting plate.	
ISSUE:	Existing mounting bracket for F/S tank has cracked.	
SUMMARY:	Install a new mounting plate for the F/S tank.	

ITS60299

Ref. NHTSA Recall No.	Ref. Transport Canada Recall No.
Not Applicable	Not Applicable

THIS ITS DOCUMENT SHOULD BE RETAINED AND REFERRED TO FOR FUTURE MAINTENANCE UNTIL THE NEW FLYER PARTS AND/OR SERVICE MANUAL IS UPDATED TO REFLECT WORK DONE AS A RESULT OF THIS DOCUMENT. ENSURE THAT THIS DOCUMENT IS AVAILABLE FOR PARTS AND MAINTENANCE STAFF GOING FORWARD.

PROCEDURE:

1. Set park brake and chock wheels.
2. Turn the main battery disconnect switch to the "OFF" position.
3. Remove the streetside light panels from the joint to one past the fire suppression bottle. Set aside to re-install later. Refer to Figure 1.

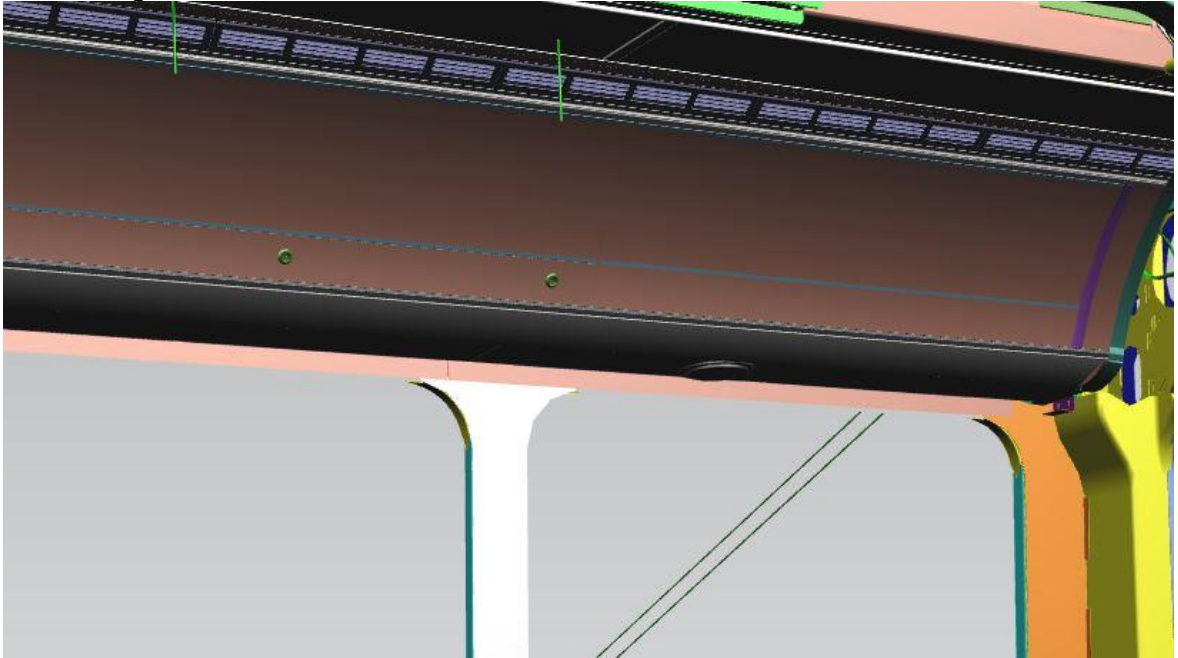


FIGURE 1: REMOVE LIGHT PANEL & COVERS TO GAIN ACCESS TO FIRE SUPPRESSION BOTTLE

4. Remove the covers around the area and secure all components off to the side. Refer to Figure 2.

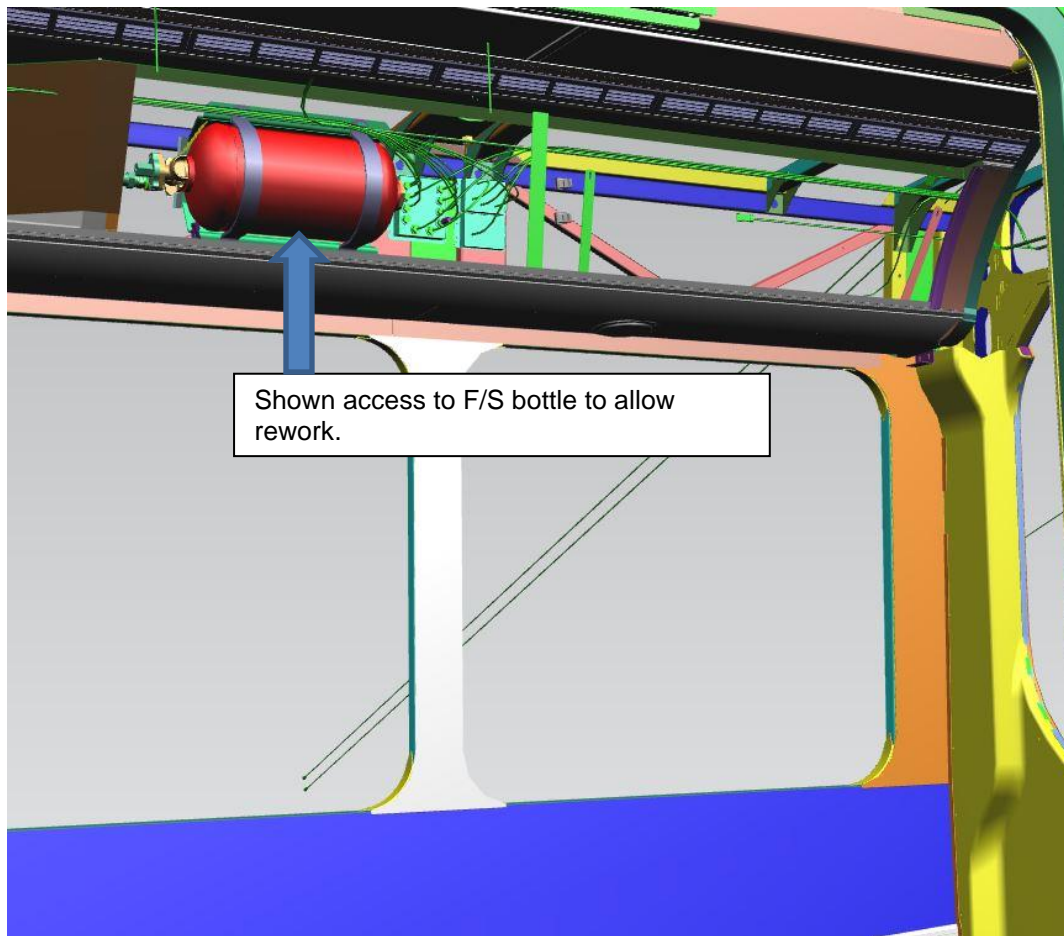
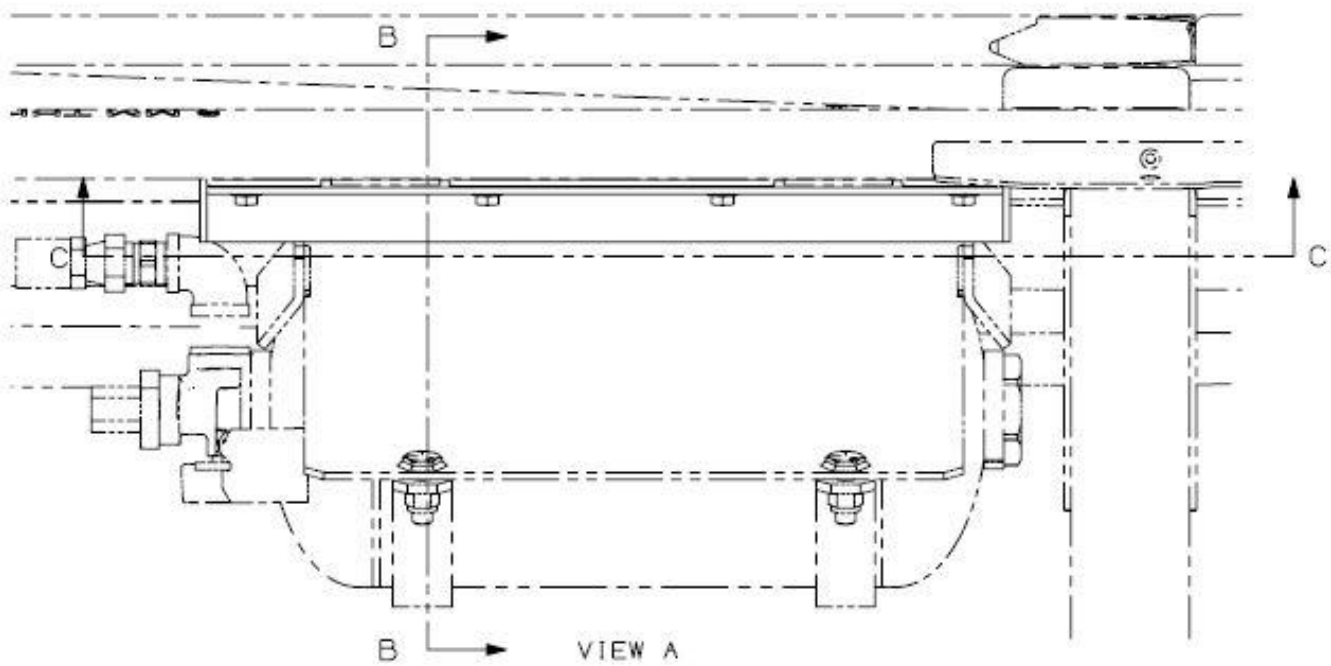
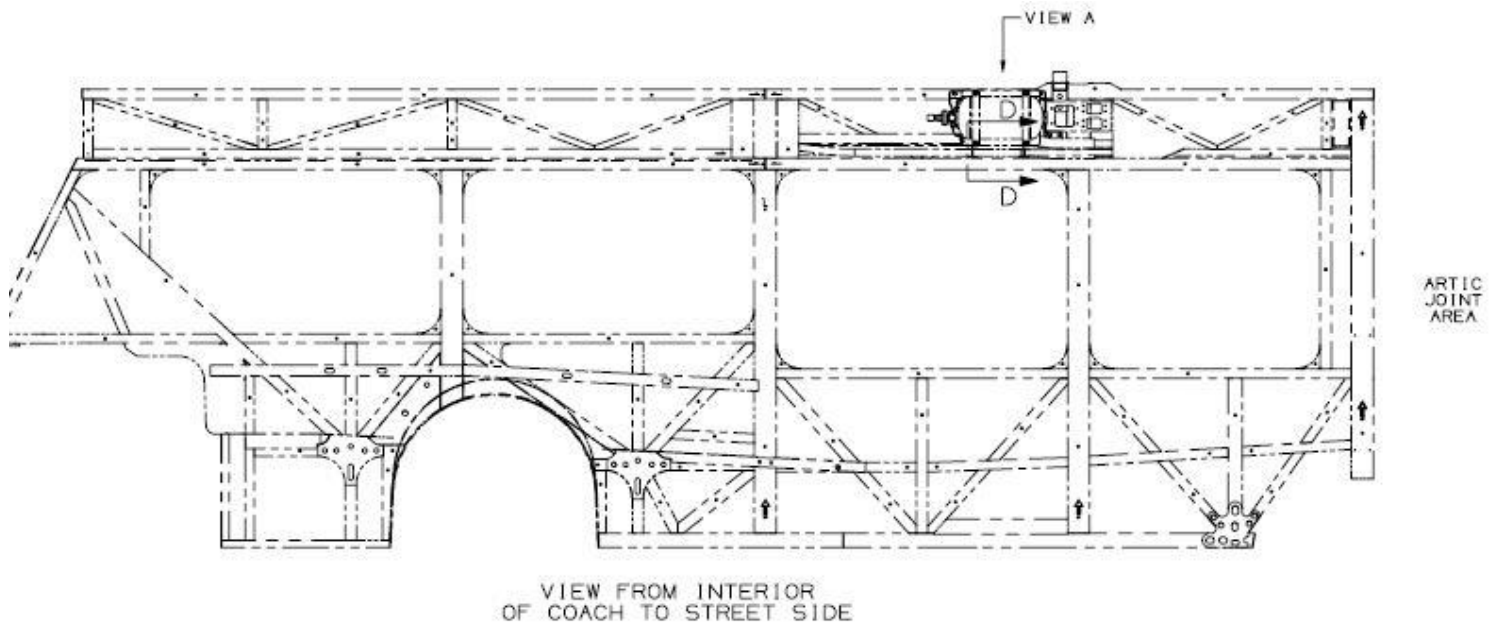
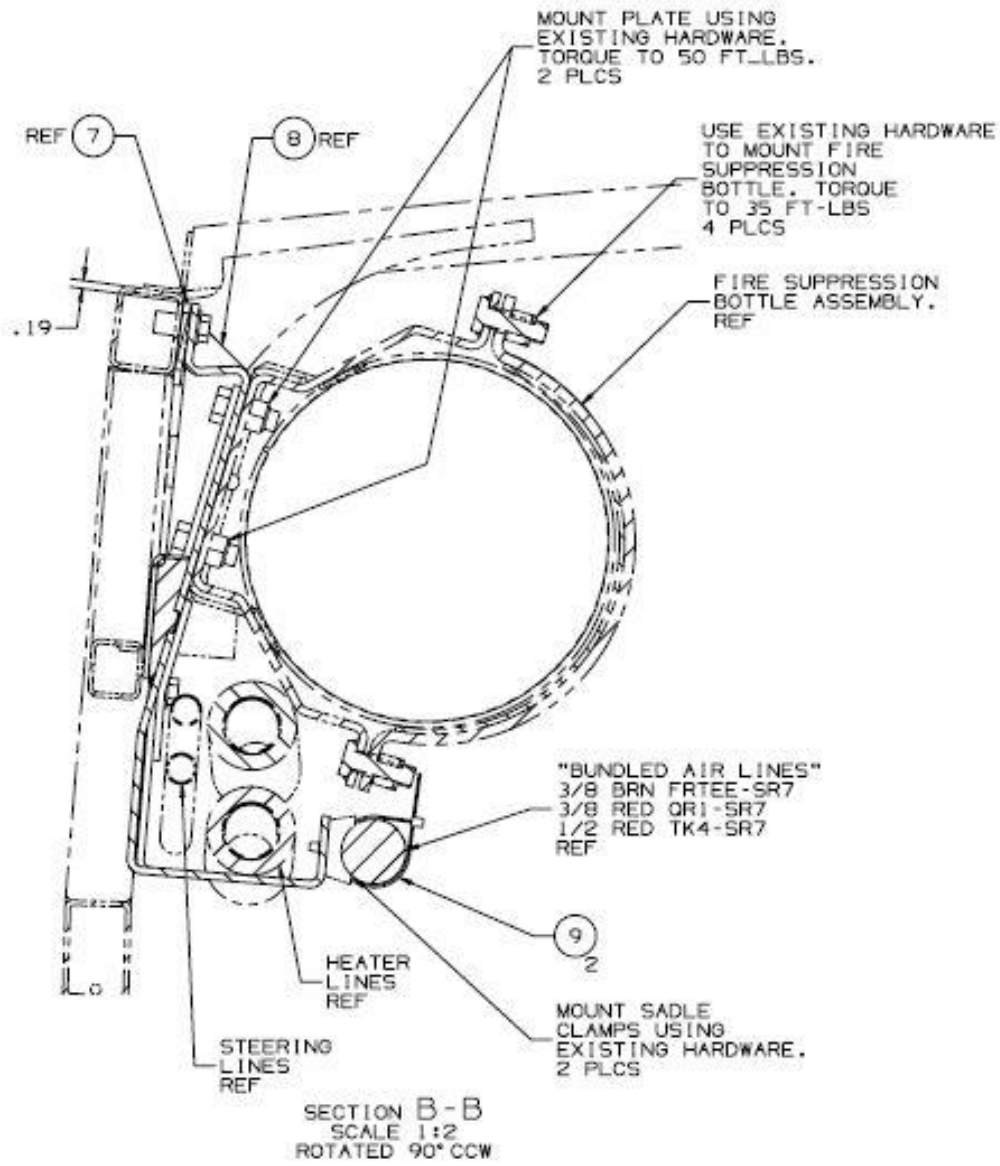


FIGURE 2: REMOVAL OF COMPONENTS TO GAIN ACCESS TO F/S BOTTLE.

5. Disconnect the hose to the fire suppression bottle. Disconnect the electrical to the bottle. Loosen hardware to allow removal of the F/S tank. Set aside to re-install later.
6. Position the new mounting plate (**PN: 940810**) over top of the existing hanger brackets, bolt threads to go thru new plate. For steps 6 - 14, refer to Figure 3.





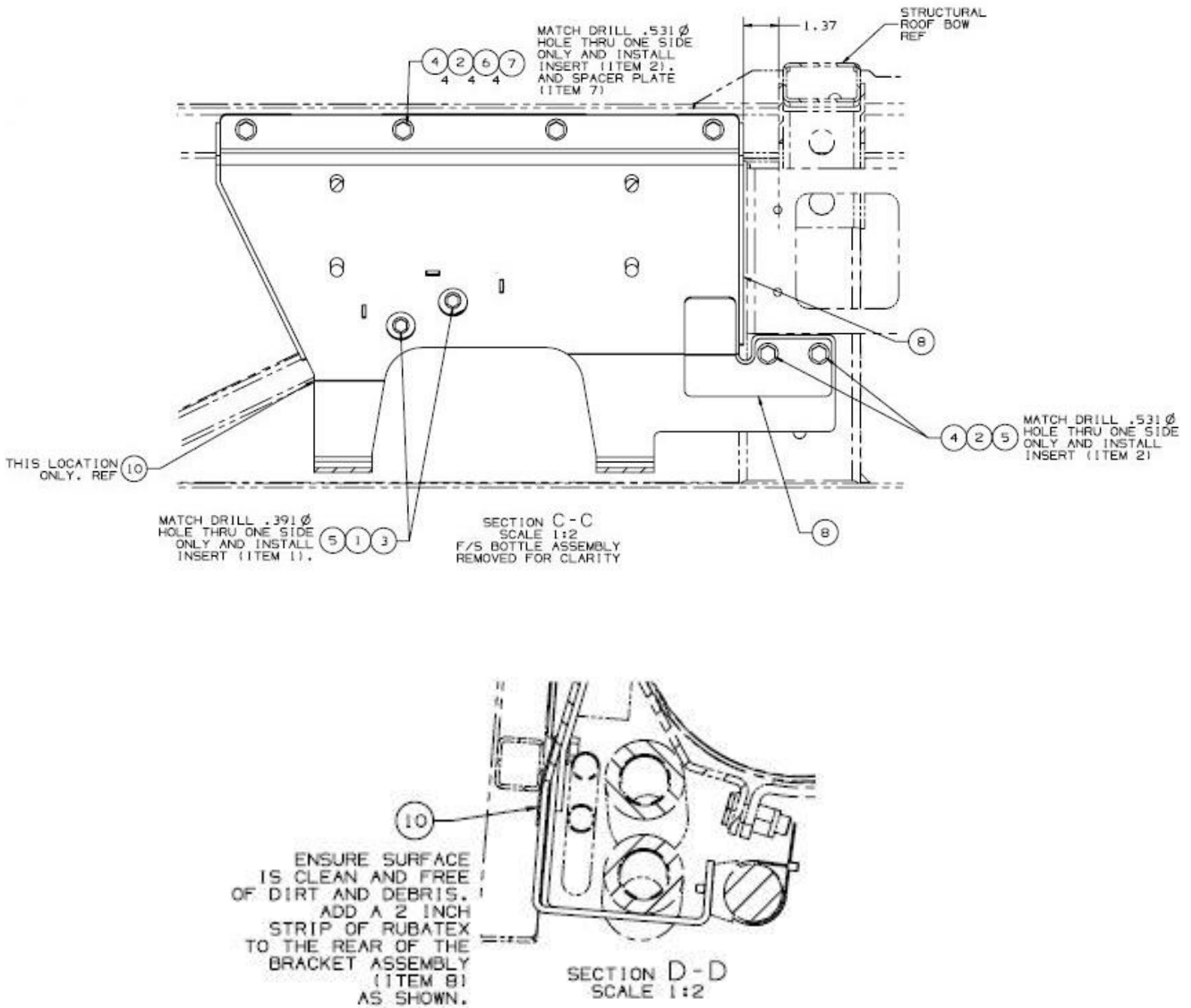
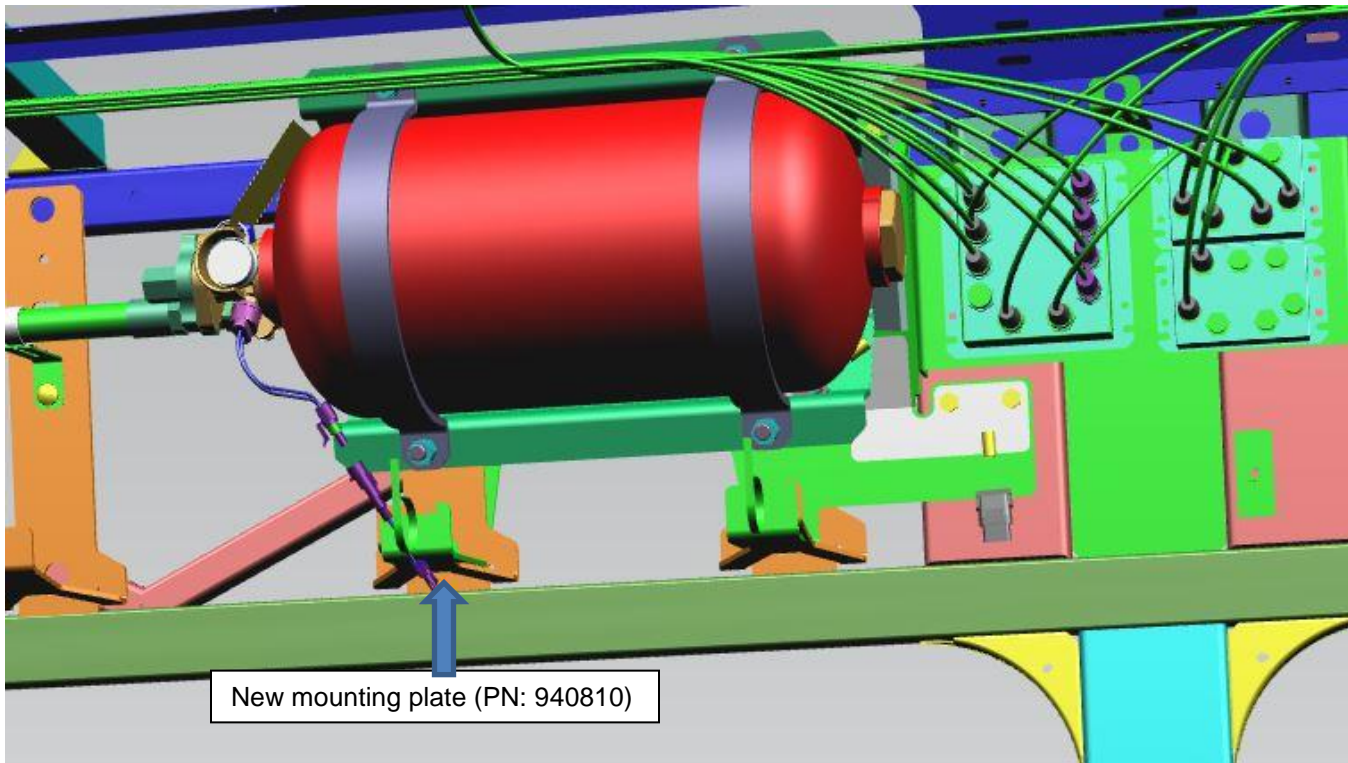
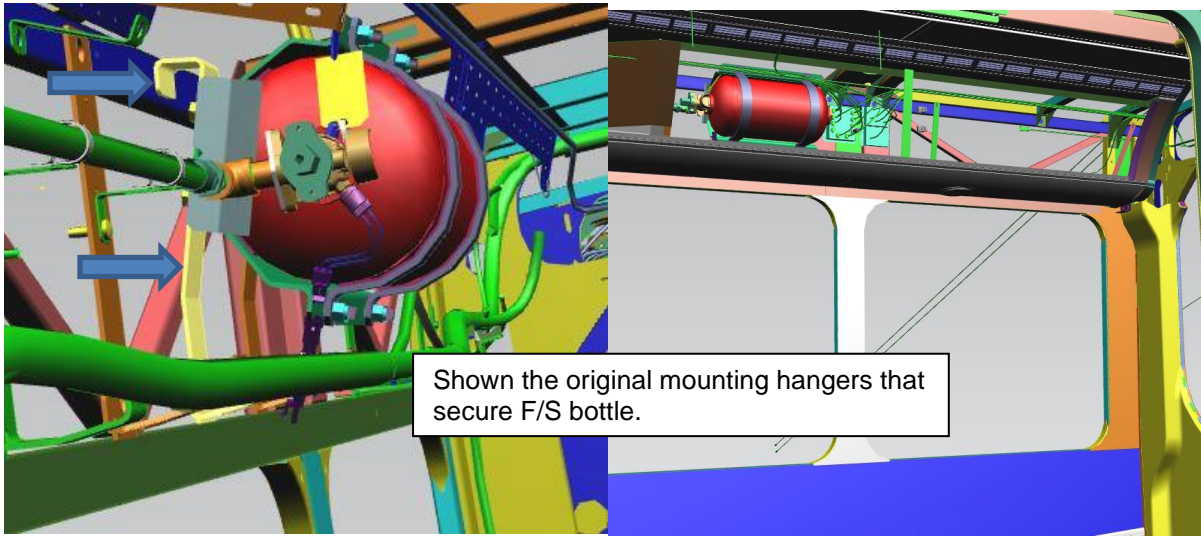
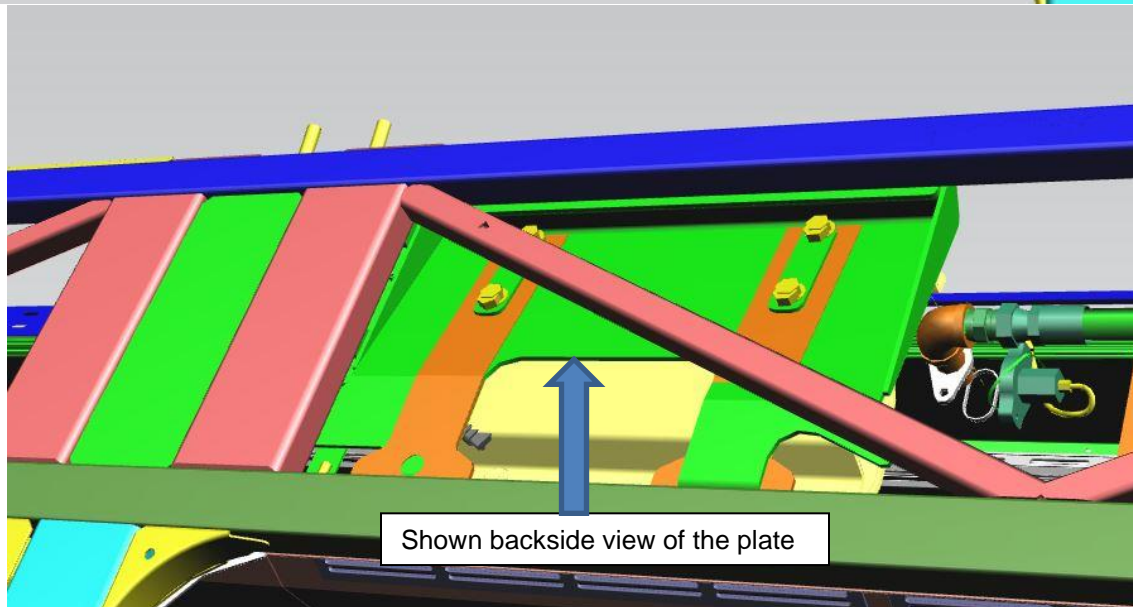
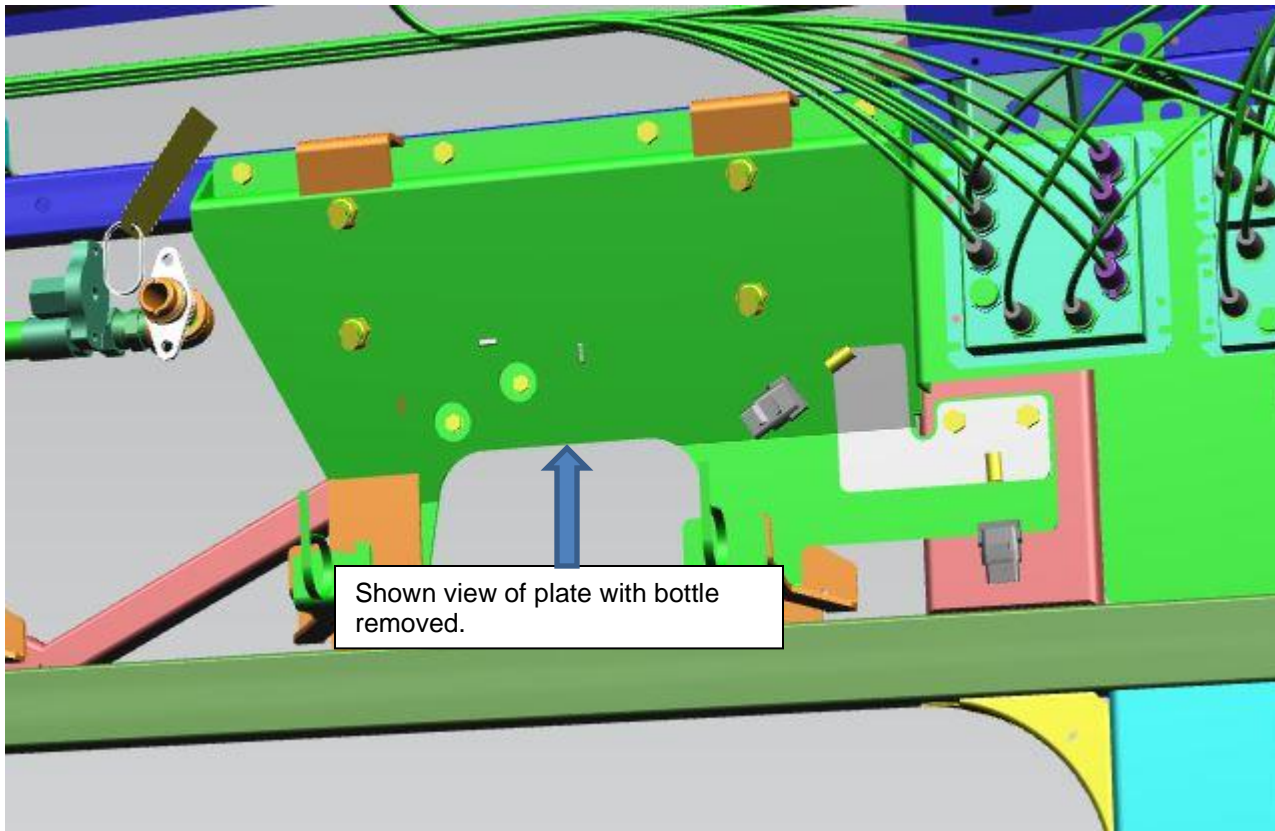


FIGURE 3: SHOWN INSTALLATION OF THE NEW MOUNTING PLATE





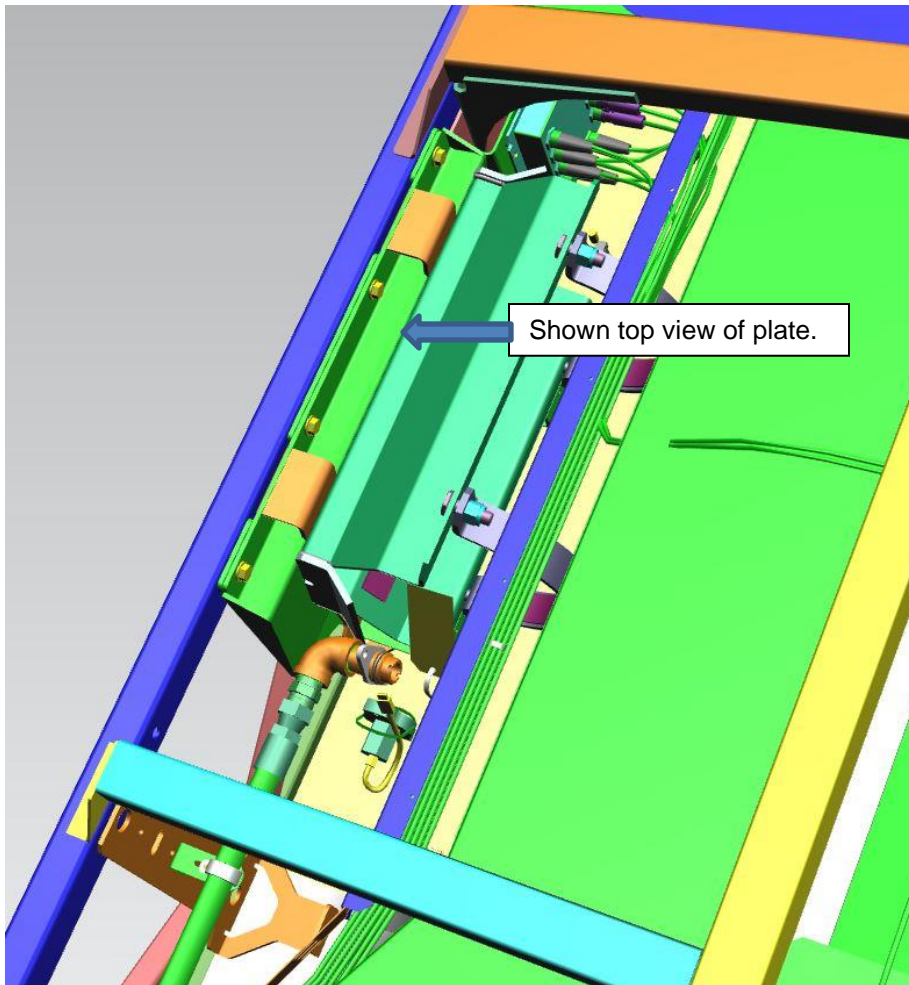


FIGURE 3A: SHOWN MORE VIEWS OF THE NEW MOUNTING PLATE.

7. Before installing the new bracket, (per Section D), ensure surface is clean and free of dirt/debris. Add a 2" strip of rubatex (PN: 5957793) to the rear of the bracket assembly (item 8).
8. Match drill (0.531") hole thru one side only and install insert (PN: 051285) and add spacer plate (PN: 936038). This will be along the top of the tube. Use item 2, 4, 6 & 7. Typical 4 places. Torque hardware to **24 FT/LBS**.
9. Match drill (0.531") hole thru one side only and install insert (PN: 051285). This will be along the forward side near the bottom of the tube. Use item 2, 4 & 5. Typical 2 places. Torque hardware to **24 FT/LBS**.
10. Match drill (0.391") hole thru one side only and install insert (PN: 050798). This will be along the forward side near the bottom of the tube. Use item 1, 3 & 5. Typical 2 places. Torque hardware to **7 FT/LBS**.
11. Match drill (0.391") hole thru one side only and install insert (PN: 050798). This will be along the forward side near the bottom of the tube. Use item 1, 3 & 5. Typical 2 places. Torque hardware to **7 FT/LBS**.



12. Once the mounting plate is installed, use the existing hardware and tighten the 4 bolts directly behind the F/S bottle. Torque to **50 FT/LBS**.
13. Re-install the fire suppression bottle. **Note:** Orientate fire suppression bracket with warning label facing upside down. Apply never seize (**PN: 5928660**) to all 4 studs. Use existing hardware and tighten in place. Torque hardware to **35 FT/LBS**. Typical 4 places.
14. Re-install F/S hose to the bottle, tighten up fitting. Torque to **79 – 87 FT/LBS** dry.
15. Use the existing saddle mount clamps with hardware to secure the bundled air lines (3/8 BRN/RD & 1/2" RD). Use ty-rap (**PN: 5955945**) to secure in place and trim off end of ty-rap after securing.
16. Re-install covers and other components that were disconnected. Re-connect electrical on F/S bottle.
17. Re-install light panels and tighten hardware.
18. Remove all tools and debris from work area to return coach to service.
19. Turn the main battery disconnect switch to the "ON" position.



LABOUR ESTIMATE				
	Operation	Number of Technician(s)	Hours	Labor Time T X HR
1	Install new F/S mount plate.	1	3.5	3.5

PARTS REQUIRED					
Item	Part Number	Description	Qty. per Coach	Units	Notes
1	050798	Insert – ¼-20UNC STL	2	EA	
2	051285	Insert – 3/8 – 16UNC STL	6	EA	
3	10B04016	Bolt – Hex ¼ UNC x 1	2	EA	
4	10B06016	Bolt – 3/8 x 1	6	EA	
5	50W04000	Washer – Flat ¼ NOM	2	EA	
6	50W06000	Washer Flat SS 3/8 NOM	6	EA	
7	936038	Spacer – Fire Suppression Bottle	1	EA	
8	940810	Assy – Fire Suppression Bottle Mtg Bkrt	1	EA	
9	5955945	Ty-Rap 14 Black	2	EA	
10	5957793	Seal – Rubatx 1.0x0.06 TK	0.2	FT	
11	5928660	Never Seize	0.01	EA	