

FLA COE  
FLB COE  
FLD Conventional  
Business Class  
FLC 112 Conventional

Century Class Conventional  
Argosy  
Cargo  
Columbia  
122SD and Coronado

Business Class M2  
Cascadia  
108SD/114SD  
> New Cascadia

**Freightliner  
Service Bulletin**

**Description of Revisions:** *This bulletin replaces the version dated December 2020. The related VMRS codes are added.*

## General Information

New Cascadia vehicles built from August 24, 2020 to September 18, 2020 were manufactured with a one-piece auxiliary dash panel. This design changed to a one-piece from a two-piece auxiliary dash panel complicated access to telematic wiring and made it more difficult to add mounts for electronic equipment and devices. These instructions detail how to remove the one-piece auxiliary dash panel and install a two-piece auxiliary dash panel.

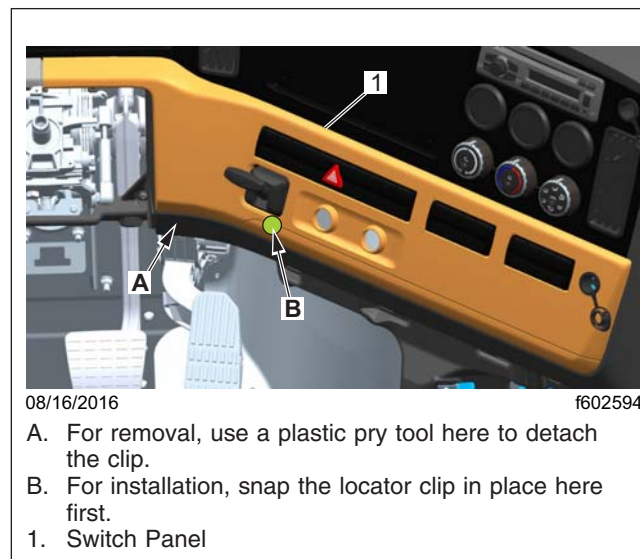
## Parts

Parts Table		
Part Number	Description	Quantity
A22-74137-001	Panel Gauge, Auxiliary Assy.	1

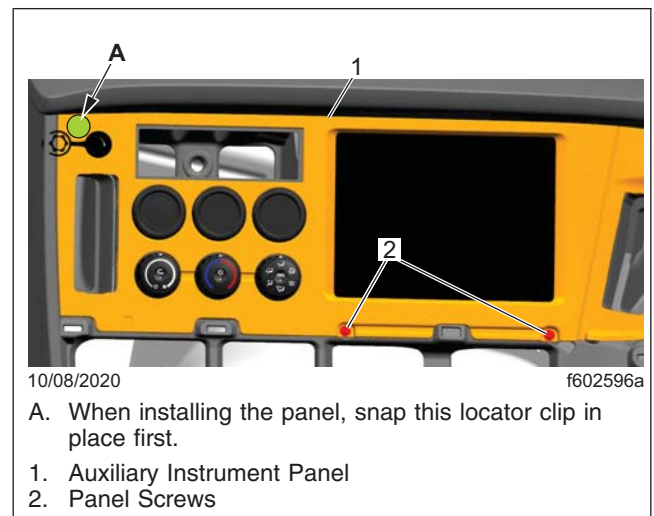
Table 1, Parts Table

## Retrofit Instructions

1. Remove the switch panel (B-panel lower fascia). See [Fig. 1](#).
  - 1.1 Remove the parking brake lever and trailer air supply valve knobs. Rotate the knobs counter-clockwise to remove them.
  - 1.2 Using a plastic pry tool, detach the lower left corner of the panel from the dash and remove the panel.



**Fig. 1, Switch Panel Removal and Installation**



**Fig. 2, Right-Hand Drive Auxiliary Instrument Panel Removal and Installation**

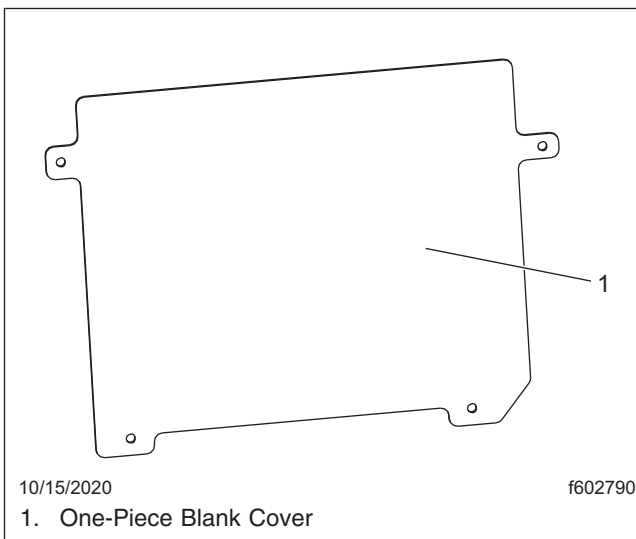
### Freightliner Service Bulletin

FLA COE  
FLB COE  
FLD Conventional  
Business Class  
FLC 112 Conventional

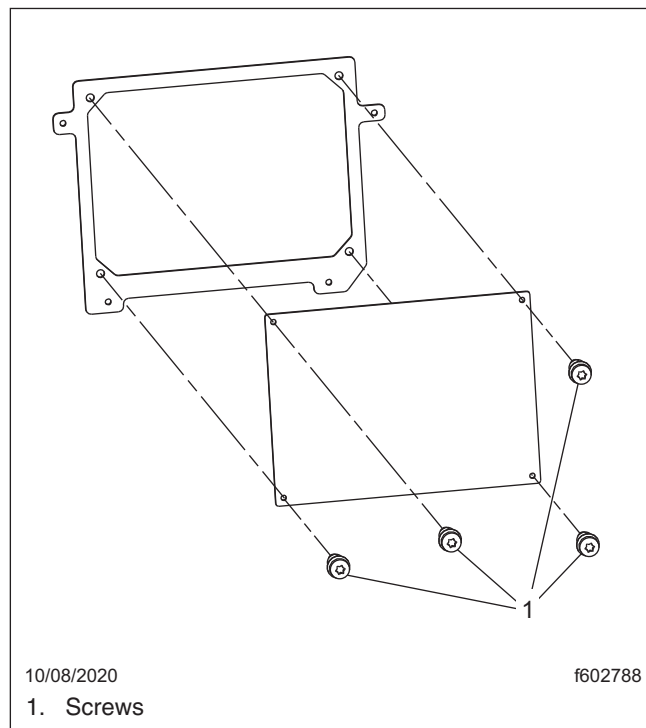
Century Class Conventional  
Argosy  
Cargo  
Columbia  
122SD and Coronado

Business Class M2  
Cascadia  
108SD/114SD  
> New Cascadia

2. Remove the auxiliary instrument panel (B-panel upper fascia). See [Fig. 2](#).
  - 2.1 Remove the two screws at the lower edge of the auxiliary instrument panel.
  - 2.2 Pull the auxiliary instrument panel clips loose from the dash. If needed, disconnect the wiring, then remove the panel. Tag the wiring for later identification if needed.
3. Remove the four screws that attach the one-piece blank cover, shown in [Fig. 3](#), and remove the panel.
4. Install the mounting ring assembly and blank cover of the two-piece auxiliary dash panel. See [Fig. 4](#). Use the current auxiliary instrument panel in the vehicle as a template, if needed, to drill holes and route openings for the new blank cover panel.



**Fig. 3, One-Piece Blank Cover**



**Fig. 4, Attaching the Cover to the Mounting Ring**

5. Install the auxiliary instrument panel (B-panel upper fascia). See [Fig. 2](#).
  - 5.1 Snap the locator clip in place first and then the rest of the panel in place.
  - 5.2 Install the two screws at the lower edge of the panel.
6. Install the switch panel (B-panel lower fascia). See [Fig. 1](#).
  - 6.1 Snap the locator clip in place first and then the rest of the panel in place.
  - 6.2 Attach the parking brake lever and trailer air supply knobs.

FLA COE  
 FLB COE  
 FLD Conventional  
 Business Class  
 FLC 112 Conventional

Century Class Conventional  
 Argosy  
 Cargo  
 Columbia  
 122SD and Coronado

Business Class M2  
 Cascadia  
 108SD/114SD  
 > New Cascadia

**Freightliner  
 Service Bulletin**

## Warranty

This procedure is warrantable only if the described condition exists and the repair is performed within the applicable base or extended coverage warranty period. If a failure is not found, this procedure is considered preventive and warranty does not apply.

Normal warranty applies. See [Table 2](#) for OWL VMRS codes and labor allowance information. Enter this service bulletin number in the *Service Bulletin #* field.

OWL VMRS Codes and Labor Allowance					
Primary Failed Part	Component Code	Cause Code	SRT Code	Description	Time: Hours
INSTRUMENT PANEL, AUXILIARY	002-008-002	46	732-5010A	INSTRUMENT PANEL - AUXILIARY, R/R	0.3

**Table 2, OWL VMRS Codes and Labor Allowance**

**NOTE:**

**Component Code / VMRS = 002-008-002 INSTRUMENT PANEL - ASSEMBLY**

