

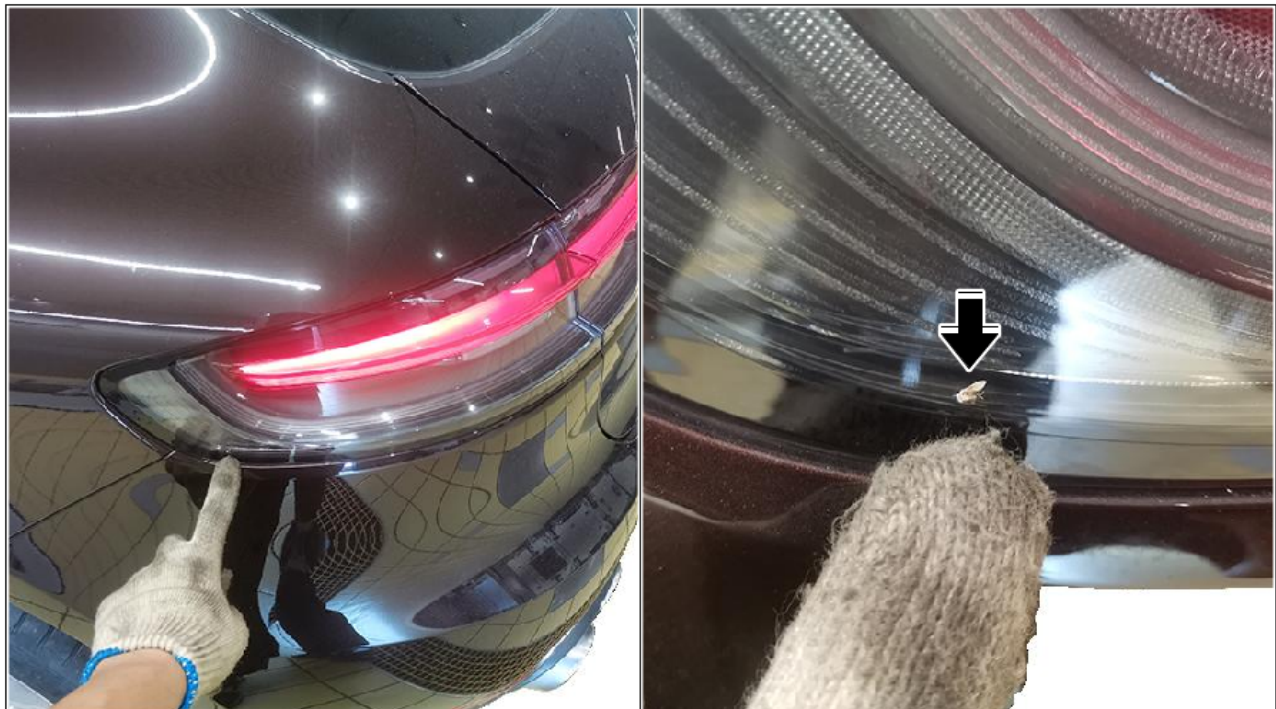
Complaint: Insects in the Tail Light - Replacing and Reworking Tail Lights if Necessary (142/21)

Model Line: **Macan (95B)**

Model Year: **As of 2019**

Concerns: **Side tail lights (left and right)**

Information: The fact that the side tail lights open inwards for condensation reasons means that insects can get inside the tail light through certain openings in the body and tail light.



Insects getting into tail light

Action required: In the event of a customer complaint, replace the affected tail light and close off the opening for the cable bushing using a plastic foam strip.

Required parts and materials

Parts Info:	Part No.	Designation – Location	Qty.
	95B898922	⇒ Plastic foam strip – Left and right tail light	2 ea.

**Information**

For details of the part number of the required tail light depending on vehicle equipment, see Porsche Electronic Parts Catalogue (PET).

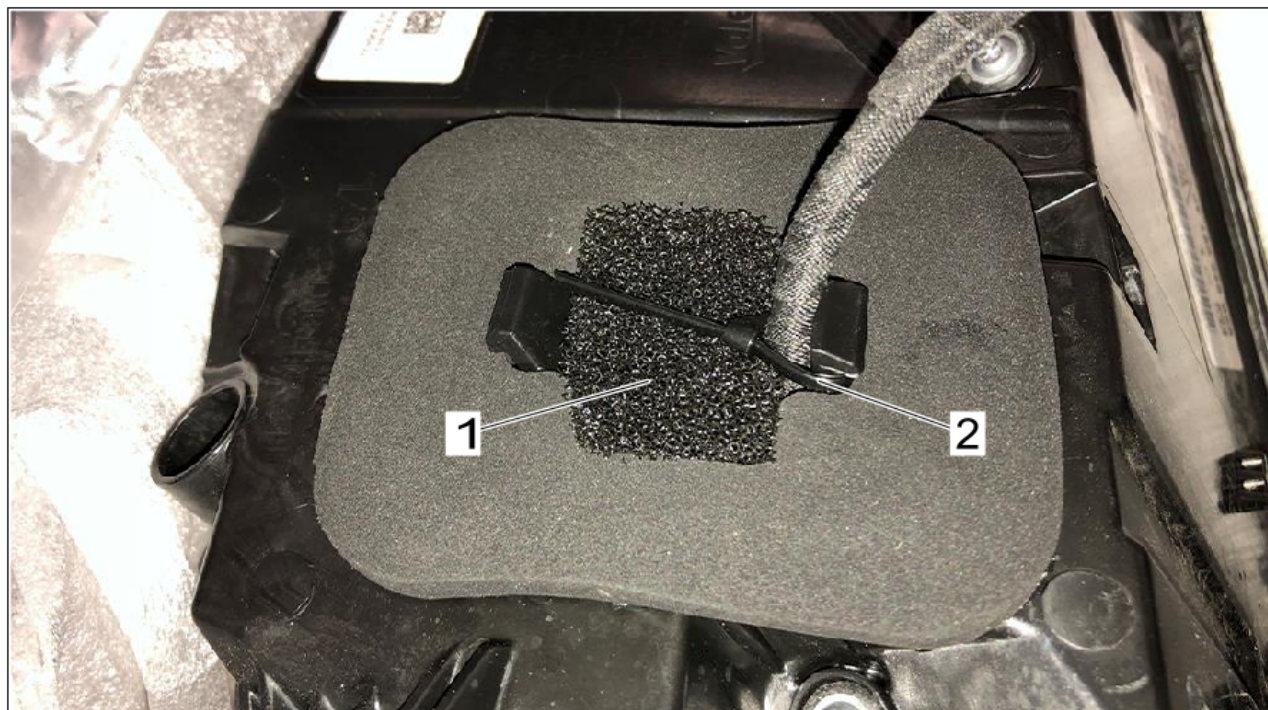
Materials:	Part No.	Designation	Qty.
	...	Tie-wrap (commercially available) approx. 60 mm/ 2.36 in long, 2.0 - 2.5 mm/ 0.08 — 0.1 in wide	2 ea.

Replacing and reworking tail lights**Information**

If insects get into the tail light, the affected tail light must be replaced.

If insects are not getting into both tail lights, only retrofit the plastic foam strip on the tail light that is not affected.

Work Procedure: 1 Remove tail lights. ⇒ *Workshop Manual '943119 Removing and installing tail light'*



Retrofitting plastic foam strip

- 2 Before installing the tail light, affix a plastic foam strip ⇒ *Retrofitting plastic foam strip -1-* at the opening of the cable bushing as shown in figure ⇒ *Retrofitting plastic foam strip*.
- 3 Route electric line for the tail light as shown in figure ⇒ *Retrofitting plastic foam strip* and secure it at the edge with a tie-wrap ⇒ *Retrofitting plastic foam strip -2-*. Cut off the extra length at the end of the tie-wrap using side cutters.
- 4 Install tail lights. ⇒ *Workshop Manual '943119 Removing and installing tail light'*

Invoicing



Information

The specified labor operation includes all work and scenarios described in this Technical Information for both tail lights. The labor operation therefore applies irrespective of whether the tail lights were replaced and reworked or merely reworked.

For documentation and warranty invoicing, enter the specified labor operation and PQIS coding in the warranty claim.

APOS	Labor operation	I No.
94315000	Reworking tail lights	

PQIS coding:

Location (FES5)	94310	Tail light
Damage type (SA4)	1041	Foreign bodies

References: ⇒ *Workshop Manual '943119 Removing and installing tail light'*

Important Notice: Technical Bulletins issued by Porsche Cars North America, Inc. are intended only for use by professional automotive technicians who have attended Porsche service training courses. They are written to inform those technicians of conditions that may occur on some Porsche vehicles, or to provide information that could assist in the proper servicing of a vehicle. Porsche special tools may be necessary in order to perform certain operations identified in these bulletins. Use of tools and procedures other than those Porsche recommends in these bulletins may be detrimental to the safe operation of your vehicle, and may endanger the people working on it. Properly trained Porsche technicians have the equipment, tools, safety instructions, and know-how to do the job properly and safely. Part numbers listed in these bulletins are for reference only. The work procedures updated electronically in the Porsche PIWIS diagnostic and testing device take precedence and, in the event of a discrepancy, the work procedures in the PIWIS Tester are the ones that must be followed.

© 2022 Porsche Cars North America, Inc.