

Service Campaign Bulletin



Mercedes-Benz

Campaign No. 2021050013, August 2021

TO: ALL MERCEDES-BENZ CENTERS

SUBJECT: **Models various**
Model year 2019

Replace Emission Control Information Label

Mercedes-Benz AG ("MBAG"), the manufacturer of Mercedes-Benz vehicles, has determined that on certain Model Year ("MY") 2019 AMG E-Class (213 platform), AMG E-Class Coupe/Convertible (238 platform), AMG CLS-Class (257 platform) and CLS-Class (257 platform) vehicles, the Emission Control Information label does not correspond with valid vehicle specifications. As a result, customers may encounter issues during the vehicle registration or inspection process.

Prior to performing this Campaign:

- **VMI must always be checked before performing campaigns to verify that the campaign is required on a specific vehicle. Always check for any other open campaigns, and perform accordingly.**
- Please review the entire Campaign bulletin and follow the repair procedure exactly as described.

Approximately 73 vehicles are affected.

Order No. P-SC-2021050013

This bulletin has been created and maintained in accordance with MBUSA-SLP S423QH001, Document and Data Control, and MBUSA-SLP S424HH001, Control of Quality Records.

Replace Emission Control Information label

Model 213, 238, 257

Work procedure

1. Open hood.
2. Replace the Emission Control Information label (**Figure 1**) on hood.
 - i** The new label must contain the text "**TWC(2)**" (**Figure 1**)!
 - i** For model 213 - bonding position 3.3, (**Figure 2**).
 - i** For model 238 - bonding position 3.3, (**Figure 3**).
 - i** For model 257 - bonding position 3.1, (**Figure 4**).
 - i** Remove old label by using a heat gun.
 - i** Contamination and adhesive residues from the old label must be removed via a thorough cleaning.

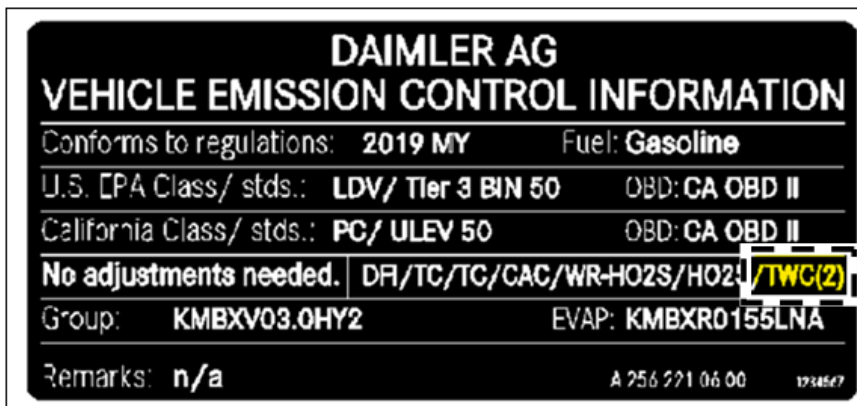


Figure 1



Figure 2 (Model 213)

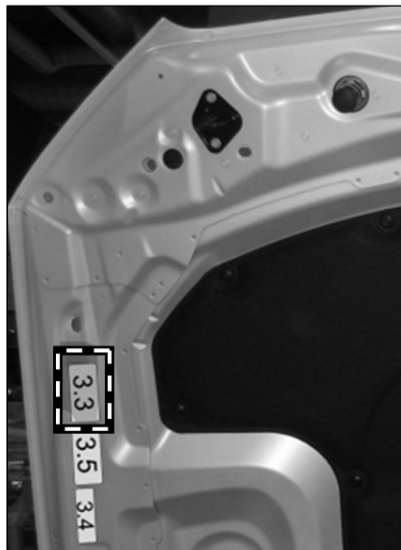


Figure 3 (Model 238)



Figure 4 (Model 257)

Primary Parts Information

Qty.	Part Name	Part Number
As required (1)	Emission control information label for model 238	A 256 221 06 00
As required (1)	Emission control information label for model 213	A 256 221 08 00
As required (1)	Emission control information label for model 257 (Except model 257.361)	A 256 221 09 00
As required (1)	Emission control information label for model 257.361	A 256 221 07 00

Note:

- The following allowable labor operation should be used when submitting a warranty claim for this repair:

Warranty Information

Operation: (02-0962) Replace emission control information label

Damage Code	Operation Number	Labor Time (hrs.)
58 917 10	02-0962	0.1

Note

Always check ASRA for the current OP-Code times. Labor times are subject to change and updates may not be reflected in this document.