

**FT5198 Water Inside Roof Fuse Box (MQR 7621-2374)**

Technical writer name / nom rédacteur technique: André Pelletier

Manual/manuel, section: **9**

| Level 1 Parts, description | Part # / # de pièce | QTY / Qté |
|----------------------------|---------------------|-----------|
| n/a                        | n/a                 | n/a       |

|   |      |
|---|------|
| Labour level 1 / main d'oeuvre niveau 1 | 0.5h |
|---|------|

|     |       |      |
|-----|-------|------|
| MQR | 7621- | 2374 |
|-----|-------|------|

| Special Tooling                    | Part # / # de pièce | QTY / Qté                                    |
|------------------------------------|---------------------|--|
| 30 cc Taper Tip Dispensing Syringe | N8950810            | 10<br>(for the 110 buse, approx 3 per depot) |

|   |    |
|---|----|
| Labour level 2 / main d'oeuvre niveau 2 | 1h |
|---|----|

| Shop Supplies     | Part # / # de pièce | QTY / Qté   |
|-------------------|---------------------|-------------|
| GREASE DIELECTRIC | N77489              | 20 gr / bus |

| Disposal of parts / disposition des pièces    |   |
|---|---|
| Removed parts are / les pièces retirées sont: | When the retained check box is checked, the parts must be retained and returned in accordance with the usual warranty procedure to be reimbursed / Pour être remboursées, les pièces doivent être conservées et retournées selon le processus de garantie habituel. |
| Discarded / jetées                            |   |
| Retained/conservées                           |   |
| x   |   |

| Client                                | Order   | Road numbers | VIN               | QTY |
|---------------------------------------|---------|--------------|-------------------|-----|
| New York City Transit New York - NYCT | LC79-02 | 9624         | 4RKYL82L3M9777783 | 1   |
| New York City Transit New York - NYCT | LC79-03 | 9625         | 4RKYL82L5M9777784 | 1   |
| New York City Transit New York - NYCT | LC79-04 | 9626         | 4RKYL82L7M9777785 | 1   |
| New York City Transit New York - NYCT | LC79-05 | 9627         | 4RKYL82L9M9777786 | 1   |
| New York City Transit New York - NYCT | LC79-06 | 9628         | 4RKYL82L0M9777787 | 1   |
| New York City Transit New York - NYCT | LC79-14 | 9636         | 4RKYL82LXM9777795 | 1   |
| New York City Transit New York - NYCT | LC79-15 | 9637         | 4RKYL82L1M9777796 | 1   |
| New York City Transit New York - NYCT | LC79-17 | 9639         | 4RKYL82L5M9777798 | 1   |
| New York City Transit New York - NYCT | LC79-22 | 9644         | 4RKYL82L5M9777803 | 1   |
| New York City Transit New York - NYCT | LC79-26 | 9648         | 4RKYL82L2M9777807 | 1   |
| New York City Transit New York - NYCT | LC79-28 | 9650         | 4RKYL82L6M9777809 | 1   |
| New York City Transit New York - NYCT | LC79-30 | 9652         | 4RKYL82L4M9777811 | 1   |
| New York City Transit New York - NYCT | LC79-31 | 9653         | 4RKYL82L6M9777812 | 1   |
| New York City Transit New York - NYCT | LC79-32 | 9654         | 4RKYL82L8M9777813 | 1   |
| New York City Transit New York - NYCT | LC79-34 | 9656         | 4RKYL82L1M9777815 | 1   |
| New York City Transit New York - NYCT | LC79-35 | 9657         | 4RKYL82L3M9777816 | 1   |
| New York City Transit New York - NYCT | LC79-36 | 9658         | 4RKYL82L5M9777817 | 1   |
| New York City Transit New York - NYCT | LC79-37 | 9659         | 4RKYL82L7M9777818 | 1   |
| New York City Transit New York - NYCT | LC79-38 | 9660         | 4RKYL82L9M9777819 | 1   |
| New York City Transit New York - NYCT | LC79-39 | 9661         | 4RKYL82L5M9777820 | 1   |
| New York City Transit New York - NYCT | LC79-40 | 9662         | 4RKYL82L7M9777821 | 1   |
| New York City Transit New York - NYCT | LC79-41 | 9663         | 4RKYL82L9M9777822 | 1   |
| New York City Transit New York - NYCT | LC79-42 | 9664         | 4RKYL82L0M9777823 | 1   |
| New York City Transit New York - NYCT | LC79-43 | 9665         | 4RKYL82L2M9777824 | 1   |
| New York City Transit New York - NYCT | LC79-44 | 9666         | 4RKYL82L4M9777825 | 1   |
| New York City Transit New York - NYCT | LC79-45 | 9667         | 4RKYL82L6M9777826 | 1   |
| New York City Transit New York - NYCT | LC79-46 | 9668         | 4RKYL82L8M9777827 | 1   |
| New York City Transit New York - NYCT | LC79-47 | 9669         | 4RKYL82LXM9777828 | 1   |
| New York City Transit New York - NYCT | LC79-48 | 9670         | 4RKYL82L1M9777829 | 1   |
| New York City Transit New York - NYCT | LC79-49 | 9671         | 4RKYL82L8M9777830 | 1   |

**Jean-Nicolas Fournier**

Digitally signed by Jean-Nicolas Fournier  
 DN: cn=Jean-Nicolas Fournier, o=Nova Bus,  
 email=jean-nicolas.fournier@volvo.com,  
 c=CA  
 Date: 2022.01.19 13:49:51 -05'00'

|                                       |          |      |                   |   |
|---------------------------------------|----------|------|-------------------|---|
| New York City Transit New York - NYCT | LC79-50  | 9672 | 4RKYL82LXM9777831 | 1 |
| New York City Transit New York - NYCT | LC79-51  | 9673 | 4RKYL82L1M9777832 | 1 |
| New York City Transit New York - NYCT | LC79-52  | 9674 | 4RKYL82L3M9777833 | 1 |
| New York City Transit New York - NYCT | LC79-54  | 9676 | 4RKYL82L7M9777835 | 1 |
| New York City Transit New York - NYCT | LC79-56  | 9678 | 4RKYL82L0M9777837 | 1 |
| New York City Transit New York - NYCT | LC79-58  | 9680 | 4RKYL82L4M9777839 | 1 |
| New York City Transit New York - NYCT | LC79-61  | 9683 | 4RKYL82L4M9777842 | 1 |
| New York City Transit New York - NYCT | LC79-69  | 9691 | 4RKYL82L3M9777850 | 1 |
| New York City Transit New York - NYCT | LC79-72  | 9694 | 4RKYL82L9M9777853 | 1 |
| New York City Transit New York - NYCT | LC79-76  | 9698 | 4RKYL82L6M9777857 | 1 |
| New York City Transit New York - NYCT | LC79-77  | 9699 | 4RKYL82L8M9777858 | 1 |
| New York City Transit New York - NYCT | LC79-78  | 9700 | 4RKYL82LXM9777859 | 1 |
| New York City Transit New York - NYCT | LC79-79  | 9701 | 4RKYL82L6M9777860 | 1 |
| New York City Transit New York - NYCT | LC79-80  | 9702 | 4RKYL82L8M9777861 | 1 |
| New York City Transit New York - NYCT | LC79-85  | 9707 | 4RKYL82L7M9777866 | 1 |
| New York City Transit New York - NYCT | LC79-88  | 9710 | 4RKYL82L2M9777869 | 1 |
| New York City Transit New York - NYCT | LC79-89  | 9711 | 4RKYL82L9M9777870 | 1 |
| New York City Transit New York - NYCT | LC79-90  | 9712 | 4RKYL82L2M9777872 | 1 |
| New York City Transit New York - NYCT | LC79-91  | 9713 | 4RKYL82L4M9777873 | 1 |
| New York City Transit New York - NYCT | LC79-92  | 9714 | 4RKYL82L6M9777874 | 1 |
| New York City Transit New York - NYCT | LC79-93  | 9715 | 4RKYL82L8M9777875 | 1 |
| New York City Transit New York - NYCT | LC79-95  | 9717 | 4RKYL82L1M9777877 | 1 |
| New York City Transit New York - NYCT | LC79-96  | 9718 | 4RKYL82L3M9777878 | 1 |
| New York City Transit New York - NYCT | LC79-97  | 9719 | 4RKYL82L5M9777879 | 1 |
| New York City Transit New York - NYCT | LC79-98  | 9720 | 4RKYL82L1M9777880 | 1 |
| New York City Transit New York - NYCT | LC79-99  | 9721 | 4RKYL82L3M9777881 | 1 |
| New York City Transit New York - NYCT | LC79-101 | 9723 | 4RKYL82L7M9777883 | 1 |
| New York City Transit New York - NYCT | LC79-102 | 9724 | 4RKYL82L9M9777884 | 1 |
| New York City Transit New York - NYCT | LC79-105 | 9727 | 4RKYL82L4M9777887 | 1 |
| New York City Transit New York - NYCT | LC79-109 | 9731 | 4RKYL82L6M9777891 | 1 |
| New York City Transit New York - NYCT | LC79-110 | 9732 | 4RKYL82L8M9777892 | 1 |
| New York City Transit New York - NYCT | LC79-111 | 9733 | 4RKYL82L3M9777900 | 1 |
| New York City Transit New York - NYCT | LC79-112 | 9734 | 4RKYL82L5M9777901 | 1 |
| New York City Transit New York - NYCT | LC79-113 | 9735 | 4RKYL82L7M9777902 | 1 |
| New York City Transit New York - NYCT | LC79-114 | 9736 | 4RKYL82L9M9777903 | 1 |
| New York City Transit New York - NYCT | LC79-117 | 9739 | 4RKYL82L4M9777906 | 1 |
| New York City Transit New York - NYCT | LC79-118 | 9740 | 4RKYL82L6M9777907 | 1 |
| New York City Transit New York - NYCT | LC79-120 | 9742 | 4RKYL82LXM9777909 | 1 |
| New York City Transit New York - NYCT | LC79-123 | 9745 | 4RKYL82LXM9777912 | 1 |
| New York City Transit New York - NYCT | LC79-124 | 9746 | 4RKYL82L1M9777913 | 1 |
| New York City Transit New York - NYCT | LC79-127 | 9749 | 4RKYL82L7M9777916 | 1 |
| New York City Transit New York - NYCT | LC79-128 | 9750 | 4RKYL82L9M9777917 | 1 |
| New York City Transit New York - NYCT | LC79-129 | 9751 | 4RKYL82L0M9777918 | 1 |
| New York City Transit New York - NYCT | LC79-130 | 9752 | 4RKYL82L2M9777919 | 1 |
| New York City Transit New York - NYCT | LC79-131 | 9753 | 4RKYL82L9M9777920 | 1 |
| New York City Transit New York - NYCT | LC79-132 | 9754 | 4RKYL82L4M9777923 | 1 |
| New York City Transit New York - NYCT | LC79-134 | 9756 | 4RKYL82L8M9777925 | 1 |
| New York City Transit New York - NYCT | LC79-135 | 9757 | 4RKYL82LXM9777926 | 1 |
| New York City Transit New York - NYCT | LC79-136 | 9758 | 4RKYL82L1M9777927 | 1 |
| New York City Transit New York - NYCT | LC79-137 | 9759 | 4RKYL82L3M9777928 | 1 |
| New York City Transit New York - NYCT | LC79-138 | 9760 | 4RKYL82L5M9777929 | 1 |
| New York City Transit New York - NYCT | LC79-139 | 9761 | 4RKYL82L1M9777930 | 1 |
| New York City Transit New York - NYCT | LC79-140 | 9762 | 4RKYL82L3M9777931 | 1 |

|                                       |          |      |                   |   |
|---------------------------------------|----------|------|-------------------|---|
| New York City Transit New York - NYCT | LC79-141 | 9763 | 4RKYL82L5M9777932 | 1 |
| New York City Transit New York - NYCT | LC79-142 | 9764 | 4RKYL82L7M9777933 | 1 |
| New York City Transit New York - NYCT | LC79-143 | 9765 | 4RKYL82L0M9777935 | 1 |
| New York City Transit New York - NYCT | LC79-144 | 9766 | 4RKYL82L2M9777936 | 1 |
| New York City Transit New York - NYCT | LC79-145 | 9767 | 4RKYL82L4M9777937 | 1 |
| New York City Transit New York - NYCT | LC79-146 | 9768 | 4RKYL82L6M9777938 | 1 |
| New York City Transit New York - NYCT | LC79-147 | 9769 | 4RKYL82L8M9777939 | 1 |
| New York City Transit New York - NYCT | LC79-148 | 9770 | 4RKYL82L4M9777940 | 1 |
| New York City Transit New York - NYCT | LC79-149 | 9771 | 4RKYL82L6M9777941 | 1 |
| New York City Transit New York - NYCT | LC79-150 | 9772 | 4RKYL82L8M9777942 | 1 |
| New York City Transit New York - NYCT | LC79-151 | 9773 | 4RKYL82LXM9777943 | 1 |
| New York City Transit New York - NYCT | LC79-153 | 9775 | 4RKYL82L3M9777945 | 1 |
| New York City Transit New York - NYCT | LC79-154 | 9776 | 4RKYL82L5M9777946 | 1 |
| New York City Transit New York - NYCT | LC79-155 | 9777 | 4RKYL82L7M9777947 | 1 |
| New York City Transit New York - NYCT | LC79-156 | 9778 | 4RKYL82L9M9777948 | 1 |
| New York City Transit New York - NYCT | LC79-157 | 9779 | 4RKYL82L0M9777949 | 1 |
| New York City Transit New York - NYCT | LC79-158 | 9780 | 4RKYL82L7M9777950 | 1 |
| New York City Transit New York - NYCT | LC79-160 | 9782 | 4RKYL82L0M9777952 | 1 |
| New York City Transit New York - NYCT | LC79-161 | 9783 | 4RKYL82L2M9777953 | 1 |
| New York City Transit New York - NYCT | LC79-162 | 9784 | 4RKYL82L4M9777954 | 1 |
| New York City Transit New York - NYCT | LD64-22  | 9806 | 4RKYL82L7M9777981 | 1 |
| New York City Transit New York - NYCT | LD64-28  | 9812 | 4RKYL82L3M9777993 | 1 |
| New York City Transit New York - NYCT | LD64-45  | 9829 | 4RKYL82L4M9778022 | 1 |
| New York City Transit New York - NYCT | LD64-46  | 9830 | 4RKYL82L6M9778023 | 1 |
| New York City Transit New York - NYCT | LD64-47  | 9831 | 4RKYL82L8M9778024 | 1 |
| New York City Transit New York - NYCT | LD64-48  | 9832 | 4RKYL82LXM9778025 | 1 |
| New York City Transit New York - NYCT | LD64-60  | 9844 | 4RKYL82L1M9778043 | 1 |

# Service Instruction

## MQR 762-2374 Potential Water Intrusion in 24V Fuse Box on Cradle – FT5198 Rev0

### GENERAL INFORMATIONS

| Document      | REV | Date     | By |
|---------------|-----|----------|----|
| MQR 7621-2374 | 0   | 10/15/21 | AH |
|               |     |          |    |
|               |     |          |    |

| Order Affected / Effectivity | Road Number | Customers | QTY |
|------------------------------|-------------|-----------|-----|
| See FT5198                   |             |           |     |
|                              |             |           |     |
|                              |             |           |     |

### SYSTEM and PARTS:

|                    |                           |
|--------------------|---------------------------|
| <b>System Name</b> | 24V Distribution Fuse Box |
| <b>Option</b>      | 409615.XX                 |
| <b>Drawing</b>     | N/A                       |
| <b>Part</b>        | N100889                   |

#### Reason for Modification / Background:

- 1) Potential torque missing on the cable gland dome nuts which could lead to water intrusion.
- 2) Potential sealing issue of the fuse box cover which could lead to water intrusion.

### MATERIAL

| Item          | QTY  | PART NO  | REV | DESCRIPTION                       | REPLACES PART N° |
|---------------|------|----------|-----|-----------------------------------|------------------|
| LEVEL 1       |      |          |     |                                   |                  |
| 1             | 20mL | N77489   | 0   | GREASE DIELECTRIC NYOGEL 760G     | N/A              |
| LEVEL 2       |      |          |     |                                   |                  |
| SHOP SUPPLIES |      |          |     |                                   |                  |
| 1             | 1    | N89XXXXX | 0   | 30cc Taper Tip Dispensing Syringe |                  |

| SRT | Type              | Time     |
|-----|-------------------|----------|
|     | R&R Level 1       | 0.5 hour |
|     | R&R Level 2 (10%) | 1 hour   |

### SPECIAL INSTRUCTION / IMPORTANTE NOTICE

| No | Tools Needed:                                      |
|----|--|
| 1  | Nylon brush  |
| 2  | Small torque screwdriver (good for a range of 2Nm) |
| 3  | Torque wrench (good for a range of 5-6.5Nm)        |
| 4  | Torque seal  |
| 5  | 30cc Syringe                                       |
| 6  | Crowfoot (42mm, 33mm)                              |

#### Important notices

## DESCRIPTION / WORK INSTRUCTION

**WARNING:** Follow your internal safety procedures

1. Park the vehicle on an even surface with transmission on neutral (N) and apply the parking brake.
2. Before starting any work on the vehicle, make sure that the vehicle is completely and securely stationary.
3. Set the Master Control Switch in the STOP position (see figure 1).
4. Set the batteries disconnect switch in the OFF position.

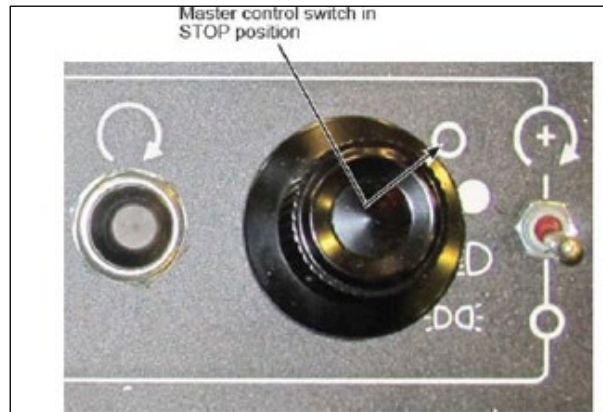


Figure 1: Master Control Switch in STOP position

5. Equip proper fall protection equipment when working on the roof of the bus. Follow your internal safety procedures
6. Open the two canopy doors on the curbside of the bus to locate the 24V fuse box on the cradle of the bus (see figure 2).

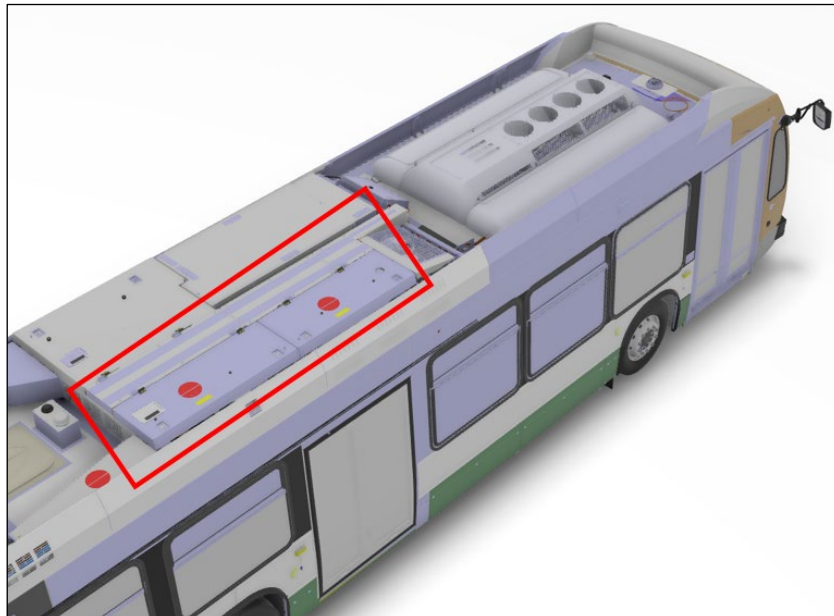


Figure 2: Canopy Doors to Locate Fuse Box

7. Remove the cover of the fuse box and inspect for signs of water intrusion. (See figure 3 and 4).
  - a. If no water is found, proceed to step 8.
  - b. If water is present, proceed to step 11 for level 2 procedure.



Figure 3: Fuse Box Condensation

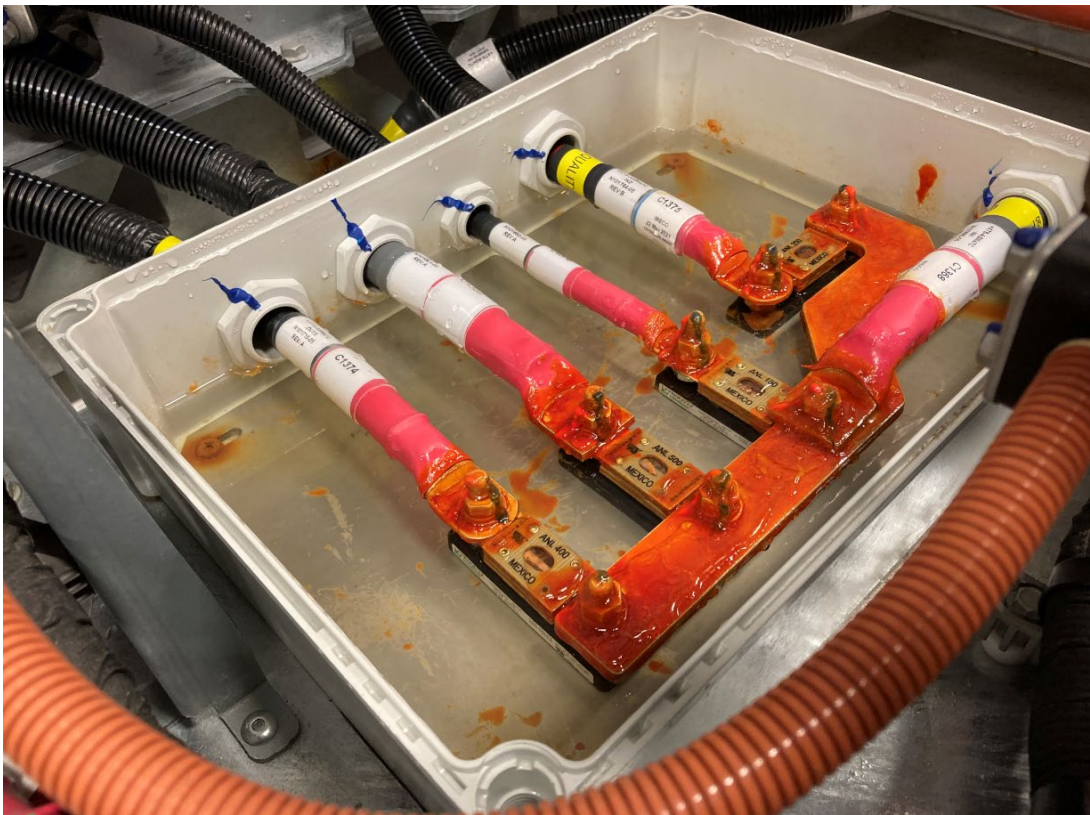


Figure 4: Water Present in Fuse Box

8. Using a torque wrench and crowfoot attachment, torque the cable gland dome nuts in figure 5 according to table 1. Apply torque seal.

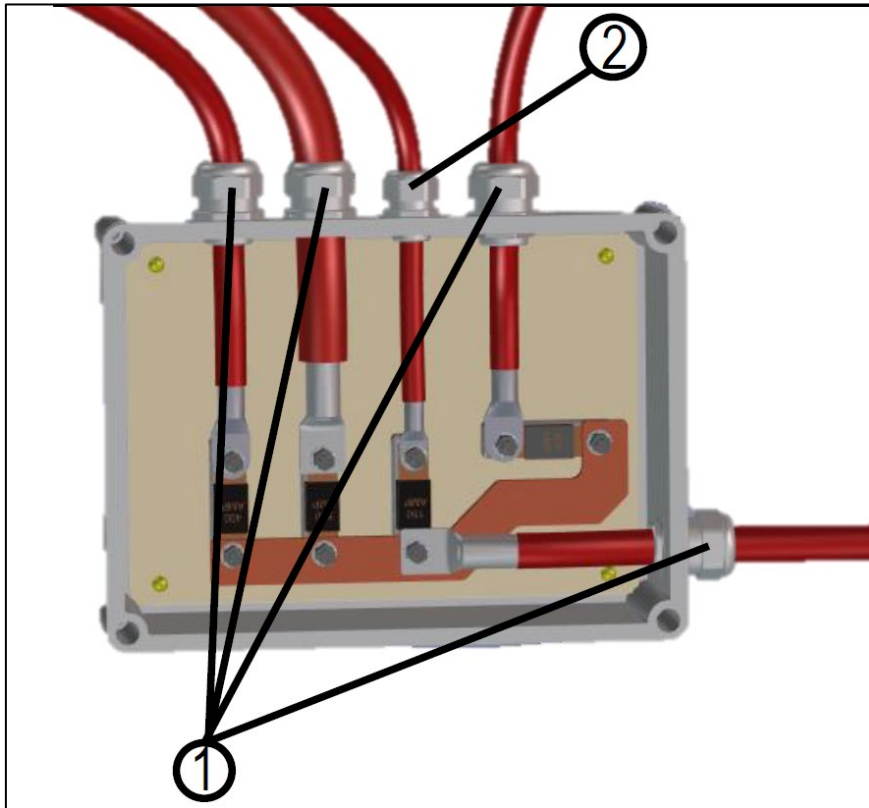
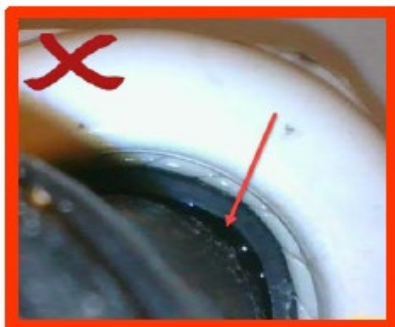


Figure 5: Cable Gland Dome Nuts



| ITEM | Torque Value (Nm) | Torque Value (lb-in) |
|------|-------------------|----------------------|
| 1    | 6.5               | 58                   |
| 2    | 5                 | 45                   |

Table 1: Cable Gland Dome Nut Torque Value

9. Apply a layer of NyoGel 760G to the face of the seal around the entire perimeter of the fuse box cover. Use a syringe to ensure consistent application. There must be no gaps. (See figure 6).
  - a. The nozzle of the syringe may be trimmed to help the application.



Figure 6: Application of NyoGel on Cover Seal

10. Carefully re-install the cover of the fuse box and torque the four cover screws to 2Nm. Apply torque seal. (See figure 7).

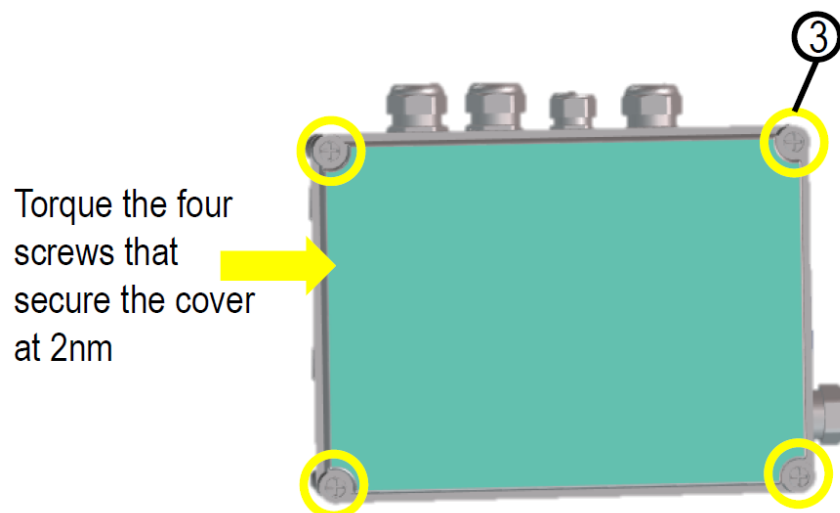
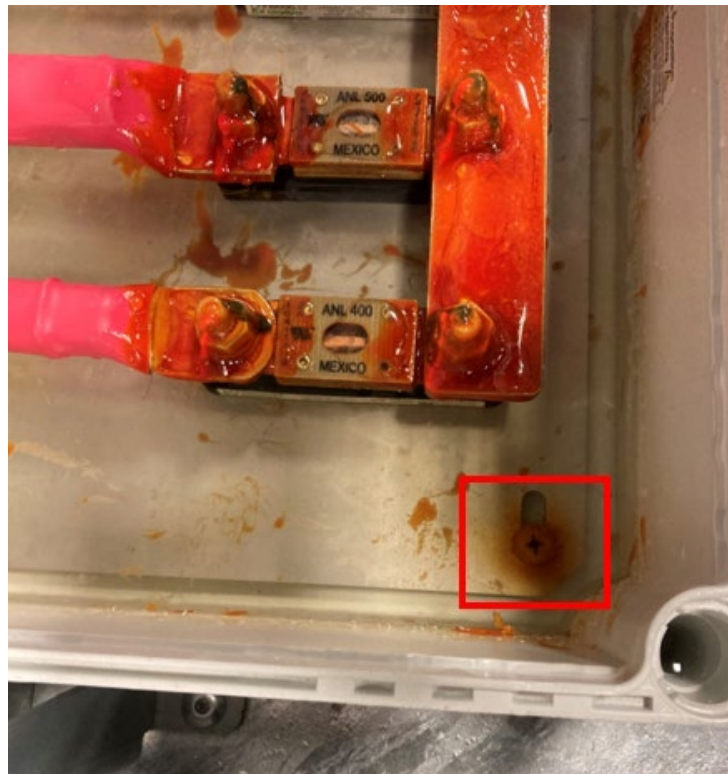


Figure 7: Torque for Cover Screws

## Level 2 Procedure: Water present in fuse box

Note: If water is present, please fill out the table below.

11. If water is present, remove water, completely dry the fuse box, clean any corroded surfaces/terminals with Nylon Brush and a contact cleaner/degreaser if required.
12. Re-apply NCP-2 anticorrosion product on the electrical connection and hardware (see figure 8).
13. Proceed to step 7.



*Figure 8: Corrosion on Hardware*

| Type    | Bus# | Location | VIN               | Water Present in fuse box? | Was there an under torqued cable gland dome nut? |
|---------|------|----------|-------------------|----------------------------|--|
| LC79-02 | 9624 | 100ST    | 4RKYL82L3M9777783 |                            |  |
| LC79-03 | 9625 | 100ST    | 4RKYL82L5M9777784 |                            |  |
| LC79-04 | 9626 | 100ST    | 4RKYL82L7M9777785 |                            |  |
| LC79-05 | 9627 | 100ST    | 4RKYL82L9M9777786 |                            |  |
| LC79-06 | 9628 | 100ST    | 4RKYL82L0M9777787 |                            |  |
| LC79-14 | 9636 | 100ST    | 4RKYL82LXM9777795 |                            |  |
| LC79-15 | 9637 | 100ST    | 4RKYL82L1M9777796 |                            |  |
| LC79-17 | 9639 | 100ST    | 4RKYL82L5M9777798 |                            |  |
| LC79-22 | 9644 | KB       | 4RKYL82L5M9777803 |                            |  |
| LC79-26 | 9648 | KB       | 4RKYL82L2M9777807 |                            |  |
| LC79-28 | 9650 | KB       | 4RKYL82L6M9777809 |                            |  |
| LC79-30 | 9652 | KB       | 4RKYL82L4M9777811 |                            |  |
| LC79-31 | 9653 | KB       | 4RKYL82L6M9777812 |                            |  |
| LC79-32 | 9654 | KB       | 4RKYL82L8M9777813 |                            |  |
| LC79-34 | 9656 | KB       | 4RKYL82L1M9777815 |                            |  |
| LC79-35 | 9657 | KB       | 4RKYL82L3M9777816 |                            |  |
| LC79-36 | 9658 | KB       | 4RKYL82L5M9777817 |                            |  |
| LC79-37 | 9659 | KB       | 4RKYL82L7M9777818 |                            |  |
| LC79-38 | 9660 | KB       | 4RKYL82L9M9777819 |                            |  |
| LC79-39 | 9661 | KB       | 4RKYL82L5M9777820 |                            |  |
| LC79-40 | 9662 | KB       | 4RKYL82L7M9777821 |                            |  |
| LC79-41 | 9663 | KB       | 4RKYL82L9M9777822 |                            |  |
| LC79-42 | 9664 | KB       | 4RKYL82L0M9777823 |                            |  |
| LC79-43 | 9665 | MANVI    | 4RKYL82L2M9777824 |                            |  |
| LC79-44 | 9666 | MANVI    | 4RKYL82L4M9777825 |                            |  |
| LC79-45 | 9667 | MANVI    | 4RKYL82L6M9777826 |                            |  |
| LC79-46 | 9668 | MANVI    | 4RKYL82L8M9777827 |                            |  |
| LC79-47 | 9669 | MANVI    | 4RKYL82LXM9777828 |                            |  |
| LC79-48 | 9670 | MANVI    | 4RKYL82L1M9777829 |                            |  |
| LC79-49 | 9671 | MANVI    | 4RKYL82L8M9777830 |                            |  |
| LC79-50 | 9672 | MANVI    | 4RKYL82LXM9777831 |                            |  |
| LC79-51 | 9673 | MANVI    | 4RKYL82L1M9777832 |                            |  |
| LC79-52 | 9674 | MANVI    | 4RKYL82L3M9777833 |                            |  |
| LC79-54 | 9676 | MANVI    | 4RKYL82L7M9777835 |                            |  |
| LC79-56 | 9678 | MANVI    | 4RKYL82L0M9777837 |                            |  |
| LC79-58 | 9680 | MANVI    | 4RKYL82L4M9777839 |                            |  |
| LC79-61 | 9683 | MANVI    | 4RKYL82L4M9777842 |                            |  |
| LC79-69 | 9691 | MANVI    | 4RKYL82L3M9777850 |                            |  |
| LC79-72 | 9694 | MANVI    | 4RKYL82L9M9777853 |                            |  |
| LC79-76 | 9698 | MANVI    | 4RKYL82L6M9777857 |                            |  |
| LC79-77 | 9699 | MANVI    | 4RKYL82L8M9777858 |                            |  |

|          |      |       |                   |  |  |
|----------|------|-------|-------------------|--|--|
| LC79-78  | 9700 | MANVI | 4RKYL82LXM9777859 |  |  |
| LC79-79  | 9701 | MANVI | 4RKYL82L6M9777860 |  |  |
| LC79-80  | 9702 | MANVI | 4RKYL82L8M9777861 |  |  |
| LC79-85  | 9707 | MANVI | 4RKYL82L7M9777866 |  |  |
| LC79-88  | 9710 | MANVI | 4RKYL82L2M9777869 |  |  |
| LC79-89  | 9711 | MANVI | 4RKYL82L9M9777870 |  |  |
| LC79-90  | 9712 | MANVI | 4RKYL82L2M9777872 |  |  |
| LC79-91  | 9713 | MANVI | 4RKYL82L4M9777873 |  |  |
| LC79-92  | 9714 | MANVI | 4RKYL82L6M9777874 |  |  |
| LC79-93  | 9715 | MANVI | 4RKYL82L8M9777875 |  |  |
| LC79-95  | 9717 | MANVI | 4RKYL82L1M9777877 |  |  |
| LC79-96  | 9718 | MANVI | 4RKYL82L3M9777878 |  |  |
| LC79-97  | 9719 | MANVI | 4RKYL82L5M9777879 |  |  |
| LC79-98  | 9720 | MANVI | 4RKYL82L1M9777880 |  |  |
| LC79-99  | 9721 | MANVI | 4RKYL82L3M9777881 |  |  |
| LC79-101 | 9723 | MANVI | 4RKYL82L7M9777883 |  |  |
| LC79-102 | 9724 | MANVI | 4RKYL82L9M9777884 |  |  |
| LC79-105 | 9727 | MANVI | 4RKYL82L4M9777887 |  |  |
| LC79-108 | 9730 | MANVI | 4RKYL82L4M9777890 |  |  |
| LC79-109 | 9731 | MANVI | 4RKYL82L6M9777891 |  |  |
| LC79-110 | 9732 | MANVI | 4RKYL82L8M9777892 |  |  |
| LC79-111 | 9733 | MANVI | 4RKYL82L3M9777900 |  |  |
| LC79-112 | 9734 | MANVI | 4RKYL82L5M9777901 |  |  |
| LC79-113 | 9735 | MANVI | 4RKYL82L7M9777902 |  |  |
| LC79-114 | 9736 | MANVI | 4RKYL82L9M9777903 |  |  |
| LC79-116 | 9738 | MANVI | 4RKYL82L2M9777905 |  |  |
| LC79-117 | 9739 | MANVI | 4RKYL82L4M9777906 |  |  |
| LC79-118 | 9740 | MANVI | 4RKYL82L6M9777907 |  |  |
| LC79-120 | 9742 | MANVI | 4RKYL82LXM9777909 |  |  |
| LC79-123 | 9745 | MANVI | 4RKYL82LXM9777912 |  |  |
| LC79-124 | 9746 | MANVI | 4RKYL82L1M9777913 |  |  |
| LC79-126 | 9748 | MANVI | 4RKYL82L5M9777915 |  |  |
| LC79-127 | 9749 | MANVI | 4RKYL82L7M9777916 |  |  |
| LC79-128 | 9750 | MANVI | 4RKYL82L9M9777917 |  |  |
| LC79-129 | 9751 | MANVI | 4RKYL82L0M9777918 |  |  |
| LC79-130 | 9752 | MANVI | 4RKYL82L2M9777919 |  |  |
| LC79-131 | 9753 | MANVI | 4RKYL82L9M9777920 |  |  |
| LC79-132 | 9754 | MANVI | 4RKYL82L4M9777923 |  |  |
| LC79-133 | 9755 | MANVI | 4RKYL82L6M9777924 |  |  |
| LC79-134 | 9756 | MANVI | 4RKYL82L8M9777925 |  |  |
| LC79-135 | 9757 | MANVI | 4RKYL82LXM9777926 |  |  |
| LC79-136 | 9758 | MANVI | 4RKYL82L1M9777927 |  |  |
| LC79-137 | 9759 | MANVI | 4RKYL82L3M9777928 |  |  |
| LC79-138 | 9760 | MANVI | 4RKYL82L5M9777929 |  |  |
| LC79-139 | 9761 | MANVI | 4RKYL82L1M9777930 |  |  |

|          |      |       |                   |  |  |
|----------|------|-------|-------------------|--|--|
| LC79-140 | 9762 | MANVI | 4RKYL82L3M9777931 |  |  |
| LC79-141 | 9763 | MANVI | 4RKYL82L5M9777932 |  |  |
| LC79-142 | 9764 | MANVI | 4RKYL82L7M9777933 |  |  |
| LC79-143 | 9765 | MANVI | 4RKYL82L0M9777935 |  |  |
| LC79-144 | 9766 | MANVI | 4RKYL82L2M9777936 |  |  |
| LC79-145 | 9767 | MANVI | 4RKYL82L4M9777937 |  |  |
| LC79-146 | 9768 | MANVI | 4RKYL82L6M9777938 |  |  |
| LC79-147 | 9769 | MANVI | 4RKYL82L8M9777939 |  |  |
| LC79-148 | 9770 | MANVI | 4RKYL82L4M9777940 |  |  |
| LC79-149 | 9771 |       | 4RKYL82L6M9777941 |  |  |
| LC79-150 | 9772 | MANVI | 4RKYL82L8M9777942 |  |  |
| LC79-151 | 9773 | MANVI | 4RKYL82LXM9777943 |  |  |
| LC79-152 | 9774 | MANVI | 4RKYL82L1M9777944 |  |  |
| LC79-153 | 9775 | MANVI | 4RKYL82L3M9777945 |  |  |
| LC79-154 | 9776 | MANVI | 4RKYL82L5M9777946 |  |  |
| LC79-155 | 9777 | SECAU | 4RKYL82L7M9777947 |  |  |
| LC79-156 | 9778 | MANVI | 4RKYL82L9M9777948 |  |  |
| LC79-157 | 9779 | MANVI | 4RKYL82L0M9777949 |  |  |
| LC79-158 | 9780 | MANVI | 4RKYL82L7M9777950 |  |  |
| LC79-160 | 9782 | MANVI | 4RKYL82L0M9777952 |  |  |
| LC79-161 | 9783 | MANVI | 4RKYL82L2M9777953 |  |  |
| LC79-162 | 9784 | MANVI | 4RKYL82L4M9777954 |  |  |
| LD64-18  | 9802 | MANVI | 4RKYL82L5M9777977 |  |  |
| LD64-19  | 9803 | MANVI | 4RKYL82L7M9777978 |  |  |
| LD64-22  | 9806 | MANVI | 4RKYL82L7M9777981 |  |  |
| LD64-26  | 9810 | MANVI | 4RKYL82LXM9777991 |  |  |
| LD64-28  | 9812 | MANVI | 4RKYL82L3M9777993 |  |  |
| LD64-45  | 9829 | MANVI | 4RKYL82L4M9778022 |  |  |
| LD64-46  | 9830 | MANVI | 4RKYL82L6M9778023 |  |  |
| LD64-47  | 9831 | MANVI | 4RKYL82L8M9778024 |  |  |
| LD64-48  | 9832 | MANVI | 4RKYL82LXM9778025 |  |  |
| LD64-57  | 9841 | MANVI | 4RKYL82L6M9778040 |  |  |
| LD64-60  | 9844 | MANVI | 4RKYL82L1M9778043 |  |  |