



STAR ONLINE PUBLICATION



Case Number: S2123000057

Release Date: July 2021

Symptom/Vehicle Issue: Tail lamp Is Tight To The Pickup Box In Upper Inboard Corner

Customer Complaint/Technician Observation: Tail light may be very tight and or cracked on inboard upper corner area (fig 1).



Fig 1. Left tail light upper corner tight to bed.

This document does not authorize warranty repairs. This communication documents a record of past experiences. STAR Online does not provide any conclusions about what is wrong with the vehicle. Rather, it captures all previous cases known that appear to be similar or related to the vehicle symptom / condition. You are the expert, and you are responsible for deciding on the appropriate course of action.

Contact STAR Center, or your Technical Assistance Center Via TechCONNECT or eCONTACT ticket if no solution is found



STAR ONLINE PUBLICATION



Discussion: If the gap is tight on the tail lamp (fig 1) the lamp housing fit can be improved. A de-bur tool (fig 3) or a sharp hobby knife can trim the forward edge of the upper locating hole of the tail lamp. Using PPE (personal protection equipment) and safety precautions, carefully trim the forward edge of the hole as shown 1.5mm. Refer to Service Library for details on removal of tail lamp. 08 - Electrical / 8L - Lamps and Lighting / Lamps/Lighting - Exterior / LAMP, Tail Stop Turn / Removal and Installation



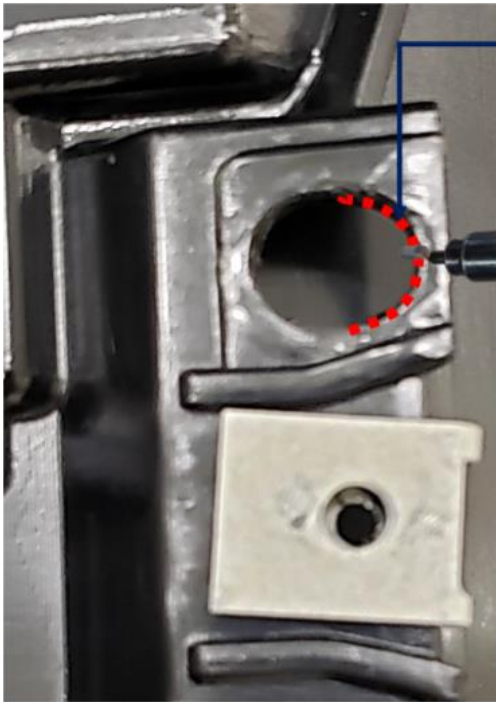
Fig 2
Tail Lamp removed and location of upper locator hole

This document does not authorize warranty repairs. This communication documents a record of past experiences. STAR Online does not provide any conclusions about what is wrong with the vehicle. Rather, it captures all previous cases known that appear to be similar or related to the vehicle symptom / condition. You are the expert, and you are responsible for deciding on the appropriate course of action.

Contact STAR Center, or your Technical Assistance Center Via TechCONNECT or eCONTACT ticket if no solution is found



STAR ONLINE PUBLICATION



Increase the size of the hole by removing material from the front side with a deburr tool by 1.5mm

Fig 3
Trim forward facing edge of the locating hole 1.5 mm

After trimming reinstall and check fit of the tail lamp assembly. Refer to 08 - Electrical / 8L - Lamps and Lighting / Lamps/Lighting - Exterior / LAMP, Tail Stop Turn / Removal and Installation

This document does not authorize warranty repairs. This communication documents a record of past experiences. STAR Online does not provide any conclusions about what is wrong with the vehicle. Rather, it captures all previous cases known that appear to be similar or related to the vehicle symptom / condition. You are the expert, and you are responsible for deciding on the appropriate course of action.

Contact STAR Center, or your Technical Assistance Center Via TechCONNECT or eCONTACT ticket if no solution is found