



NUMBER: 08-088-21 REV. A

GROUP: 08 - Electrical

DATE: June 16, 2021

This bulletin is supplied as technical information only and is not an authorization for repair. No part of this publication may be reproduced, stored in a retrieval system, or transmitted, in any form or by any means, electronic, mechanical, photocopying, or otherwise, without written permission of FCA US LLC.

This bulletin supersedes Technical Service Bulletin (TSB) 08-088-21, date of issue May 21, 2021, which should be removed from your files. All revisions are highlighted with **asterisks**** and include additional symptom.**

SUBJECT:

Radio Enhancements

OVERVIEW:

This bulletin involves updating the radio software level to 2036.06.

MODELS:

2021	(DX)	RAM Truck (Mexico)
2021	(DD)	RAM 3500 Cab Chassis
2021	(DP)	RAM 4500/5500 Cab Chassis
2021	(DJ)	RAM 2500 Pickup
2021	(DF)	RAM 3500 <10K Cab Chassis
2021	(D2)	RAM 3500 Pickup
2021	(LD)	Dodge Charger
2021	(LA)	Dodge Challenger
2021	(JT)	Jeep Gladiator
2021	(JL)	Jeep Wrangler
2021	(WD)	Dodge Durango
2021	(WK)	Jeep Grand Cherokee
2021	(RU)	Chrysler Pacifica
2021	(DT)	RAM 1500 Pickup
2021	(KL)	Jeep Cherokee

NOTE: This bulletin applies to vehicles within the following markets/countries: North America, APAC and EMEA.

NOTE: This bulletin applies to vehicles built on or before February 22, 2021 (MDH 0222XX) and equipped with one of the following radios:

- Uconnect 3 with 5" Display (Sales Codes UAA, UCA or UDA).
- Uconnect 4 with 8.4" Display (Sales Codes UAM, UCM or UDM).
- Uconnect 4 with 7" Display (Sales Codes ULG, UAG, UCG, UDG, UGG or UMG).

SYMPTOM/CONDITION:

Customers may experience the following:

- **Ghost Touch, features, modes and App's changing without drivers input.**
- Product plan UUID is not correct in Carplay®.
- Carplay audio does not always resume.
- Battery save vs. Battery Charge toggles back to Battery Charge after sleep cycle.
- When "Charge Now" is selected on key-off outside of the charging schedule – it does nothing.

In addition, the following enhancements are included:

- Update power supply source from 1 amp to 2.1 amps.
- GOOGLE® certification enhancements - screen flickers

DIAGNOSIS:

Using a Scan Tool (wiTECH) with the appropriate Diagnostic Procedures available in DealerCONNECT/Service Library, verify all related systems are functioning as designed. If Diagnostic Trouble Codes (DTCs) or symptom conditions, other than the ones listed above are present, record the issues on the repair order and repair as necessary before proceeding further with this bulletin.

If the customer describes the symptom/condition listed above, perform the Repair Procedure.

REPAIR PROCEDURE:

NOTE: An 8 GB USB flash drive is required for this update. It is also recommended to use a quality, name brand (Kingston®) flash drive over a generic USB flash drive.

1. Has a **8 GB** USB flash drive been created?

- YES >>> Proceed to [Step 11](#).
- NO >>> Proceed to [Step 2](#).

2. Perform the following steps to format the USB flash drive (Fig. 1) .
 - a. Select “FAT32” format.
 - b. Select “Default allocation size” under Allocation Unit Size.
 - c. Select “Quick Format” under Format Options.
 - d. Click “Start”.

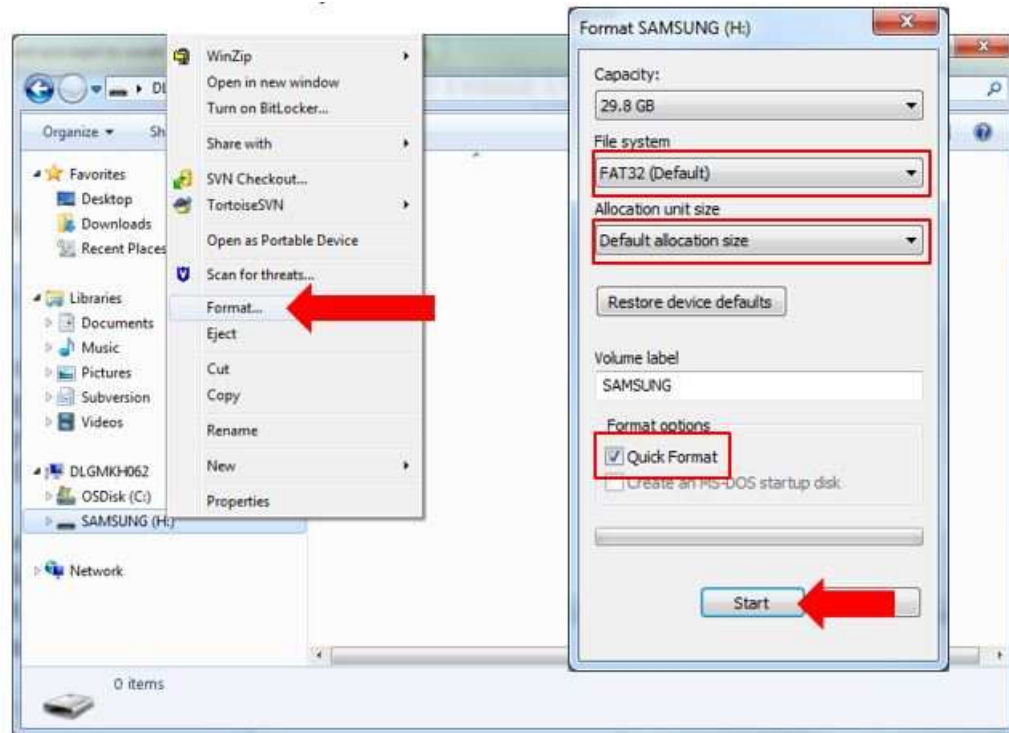


Fig. 1
Formatting The USB Flash Drive

3. Go to DealerCONNECT>Service>Uconnect Command Center>Uconnect>More Information >Dealer software downloads to download the files.
4. If a security message appears “Do you want to view only the web page content that was delivered securely?” (Fig. 2) . Press “No” to continue.



Fig. 2
Pop-Up Security Message

NOTE: If the software cannot be downloaded, make sure you have proper security access. If not, have the Service Manager or Shop Foreman download the software update.

5. Use a blank USB flash drive with at least 8 GB of space. Follow the on-screen instructions to download the software files.
6. Download the software update file to your local PC's desktop. Make sure to select the "MAC" radial button for all downloads (Fig. 3) .

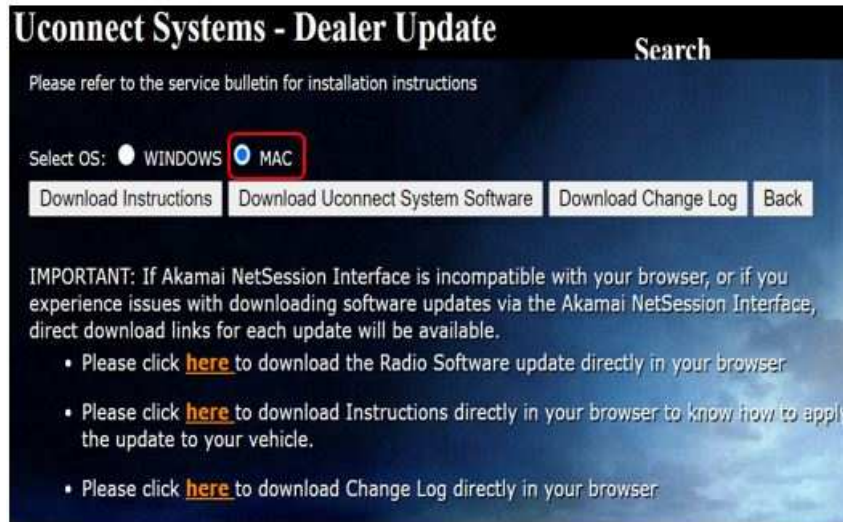


Fig. 3

MAC Download Steps

7. Be sure to download the file to your PC's desktop and open it (Fig. 4) .

NOTE: The USB should only contain a folder labeled "18000000" on it after files are extracted to it.

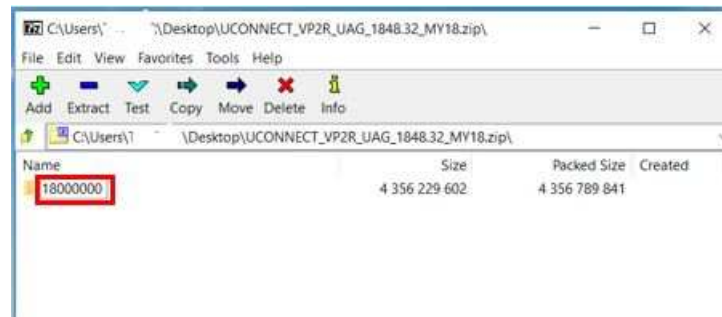


Fig. 4

Extracted File

8. Extract the downloaded file to the USB flash drive (Fig. 5) .

NOTE: It may take a few minutes for an accurate extraction time to be displayed.

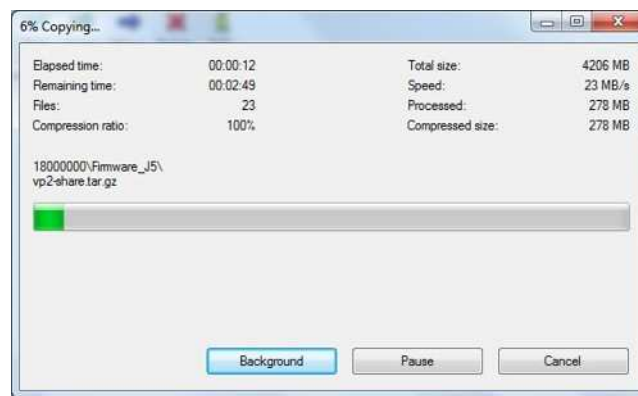


Fig. 5
Extract File To USB

9. Once the file is extracted to the USB flash drive, it is recommended to label the USB flash drive with the bulletin number and proper radio Sales Code.

NOTE: Eject the USB flash drive properly from your PC. Failure to eject the USB flash drive properly may result in an improper file byte size and cause the update to not fully download.

10. Perform the following steps to properly eject the USB flash drive (Fig. 6) :
- Right click on the location of the USB flash drive.
 - Click "Eject" to avoid data corruption.
 - Remove the USB flash drive from the PC.

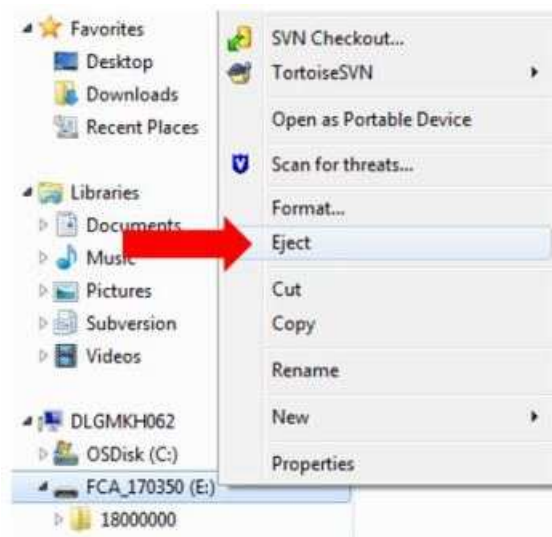


Fig. 6
Ejecting The USB Flash Drive

NOTE: Verify the vehicle fuel level is at least 1/8 of a tank. If not, add fuel as required. If necessary, take vehicle out of ship mode and enter customer mode.

- Shut off all remaining accessories for the duration of the update (flashers, climate controls, etc.).
- Wait for the radio to fully power on and initialize. Ensure all splash, partner logo, animation, disclaimer and main screens have loaded, before starting the software update.

CAUTION! Ensure no other device is plugged into any of the USB ports while performing this update. If other devices are connected to the USB ports during the update, it may cause the update to fail. This may cause the radio to need replacement.

NOTE: The engine must be running and radio powered on during the update. Failure to do so may result in the radio not being updated and create connectivity issues. **DO NOT** remove the USB flash drive during the update.

13. Start the vehicle and insert the USB flash drive into the USB port.

14. Wait for the software update pop-up window to appear on the screen.

NOTE: There can be more than one older current software level depending on vehicle/radio manufacture time of build.

15. Verify the screen states the following: "Current: 18XX.XX Update to: 2036.06 Approx time: 30 minutes". Is the radio current software level at or higher than 2036.06?

- YES >>> The radio software is already up to date. Press "Cancel" to exit. Normal diagnostics should be performed.
- NO >>> The radio software needs to be updated. Proceed to [Step 16](#).

NOTE: During the first 30 seconds of the software update, the current software is erased. The radio will then re-boot and re-start to begin the update of the software. Many software partitions are displayed on the screen during the update process.

16. Press "Yes" to start the update. The software update takes approximately 30 minutes to complete ([Fig. 7](#)) .

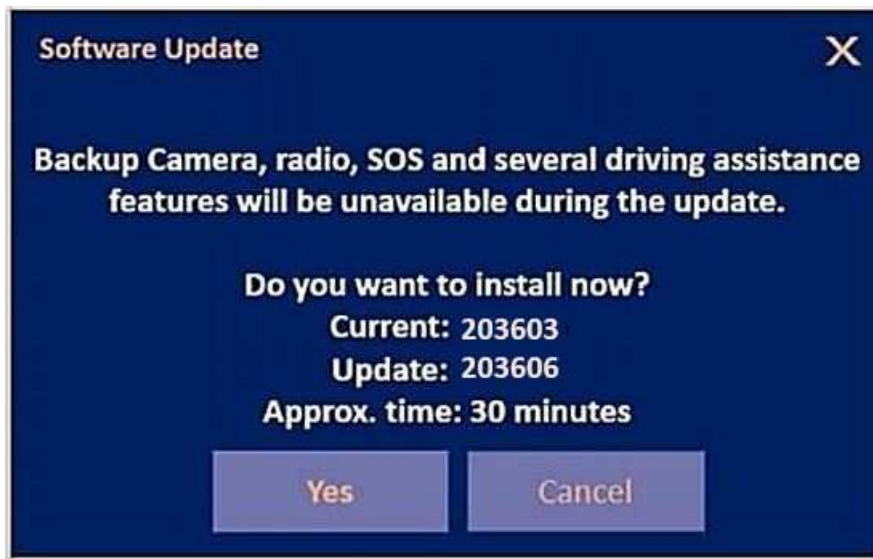


Fig. 7

Update Ready to Install

17. Did the update fail after insertion of the USB flash drive into the USB port?

- YES >>> For **KL vehicles only** proceed to [Step 18](#). For **all other vehicles**, re-start update procedure at [Step 11](#).
- NO >>> Proceed to [Step 19](#).

18. **Perform the following Step for KL vehicles only if the update attempt failed.**

Leave the USB flash drive in the USB port and perform the following:

- a. Cycle the ignition on then off.
- b. Radio should resume the update.
- c. After the update has been downloaded, proceed to [Step 19](#).

NOTE: If the software update was performed two times and still failed to update. Normal diagnostic should be performed.

NOTE: Do not remove the USB flash drive before you are instructed to [\(Fig. 8\)](#) .



Fig. 8

Do Not Remove USB Flash Drive

19. Wait for the "Radio was successfully updated" screen [\(Fig. 9\)](#) .



Fig. 9

Update Successful Screen

20. **Wait until radio resets and audio is heard before removing the USB flash drive!**
21. Verify the software version is 2036.06 by re-inserting the USB flash drive into the USB port. Did the Software Update pop-up again, displaying the following: "Current: 2036.06 Update to: 2036.06 Update not available to same software version"?
- YES >>> The software update is complete, press "Cancel" then remove the USB flash drive from the USB port.
 - NO >>> Verify the file sizes on the USB flash drive to ensure they are correct and then attempt the update again. Re-start at [Step 11](#).

NOTE: On KL vehicles, if the odometer is flashing the vehicle may need a Proxi alignment.

POLICY:

Reimbursable within the provisions of the warranty.

TIME ALLOWANCE:

Labor Operation No:	Description	Skill Category	Amount
18-60-02-CN	Radio, Software - Create USB Jump Drive From Uconnect Website (One Time Only) (0 - Introduction)	6 - Electrical and Body Systems	0.4 Hrs.
18-60-02-CP	Radio, Check Software Level and Perform Software Update (0 - Introduction)	6 - Electrical and Body Systems	0.5 Hrs.

NOTE: The “One Time Only” LOP is used one time per dealer when downloading the software onto a USB flash drive. The dealer can only use the download LOP, one time for each of the radios listed.

FAILURE CODE:

The dealer must use failure code CC with this Service Bulletin.

- If the customer’s concern matches the SYMPTOM/CONDITION identified in the Service Bulletin, failure code CC is to be used.
- When utilizing this failure code the 3C’s (customer’s concern, cause and correction) must be provided for processing Service Bulletin flash/reprogramming conditions.

CC	Customer Concern
----	------------------