



STAR ONLINE PUBLICATION



Case Number: S2108000075

Release Date: 03/19/2021

Symptom/Vehicle Issue: Transfer Case Terrain Selector Switch LED Inoperative

Customer Complaint/Technician Observation: Owner complains the Terrain switch does not illuminate and or change modes and the upper switch bank LEDs do not illuminate. Technician observed the vehicle is setting a BCM DTC, U1046-11 LIN 4 BUS Circuit.

Repair Procedure: Inspect the mirror jumper harness at the A pillar location. Inspect the harness fastener points for any signs of pinched and or damaged mirror jumper harness circuits. Repair and or replace the harness as needed Fig 1, 2.

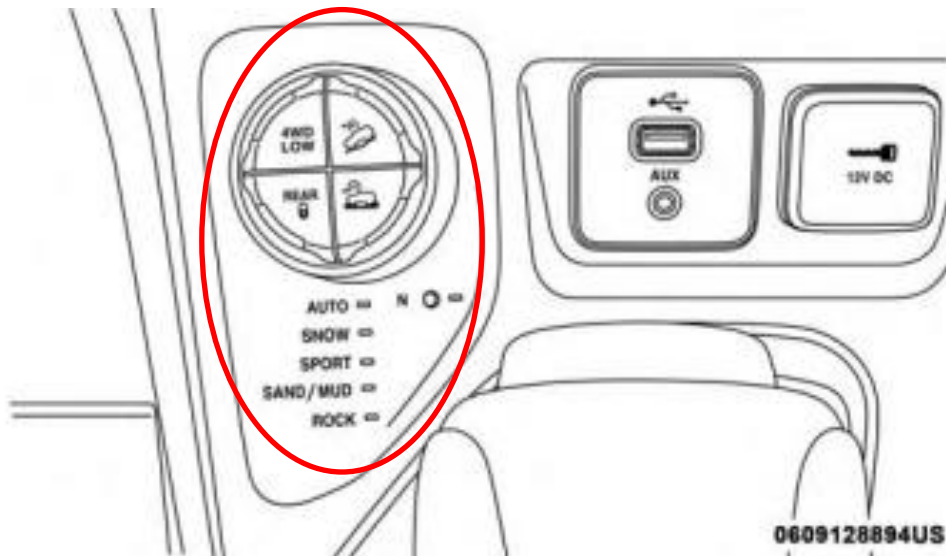


Fig 1

This document does not authorize warranty repairs. This communication documents a record of past experiences. STAR Online does not provide any conclusions about what is wrong with the vehicle. Rather, it captures all previous cases known that appear to be similar or related to the vehicle symptom / condition. You are the expert, and you are responsible for deciding on the appropriate course of action.

Contact STAR Center, or your Technical Assistance Center Via TechCONNECT or eCONTACT ticket if no solution is found



STAR ONLINE PUBLICATION

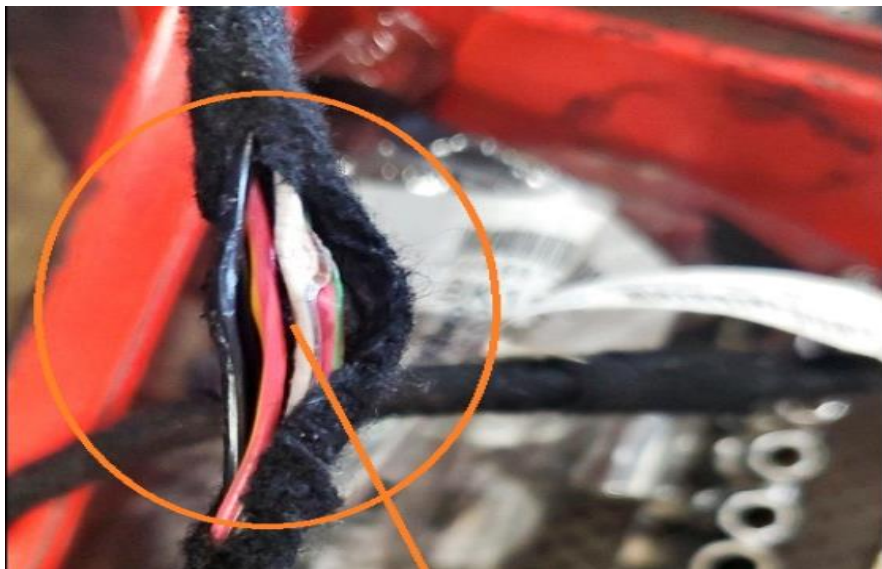
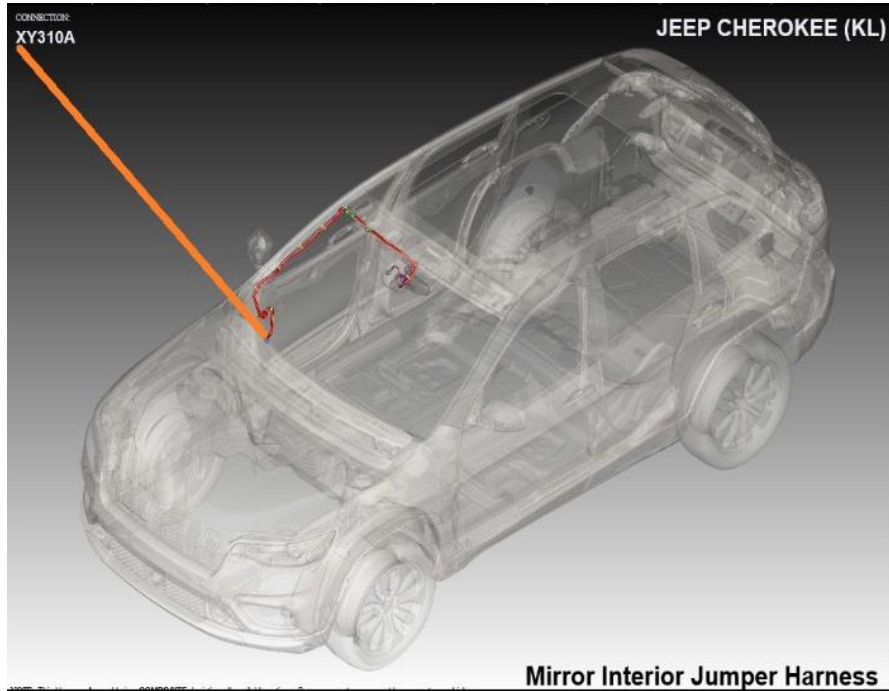


Fig 2

This document does not authorize warranty repairs. This communication documents a record of past experiences. STAR Online does not provide any conclusions about what is wrong with the vehicle. Rather, it captures all previous cases known that appear to be similar or related to the vehicle symptom / condition. You are the expert, and you are responsible for deciding on the appropriate course of action.

Contact STAR Center, or your Technical Assistance Center Via TechCONNECT or eCONTACT ticket if no solution is found