



STAR ONLINE PUBLICATION



Case Number: S2118000013

Release Date: July 2021

Symptom/Vehicle Issue: Customer complaint may include the transmission going into neutral on its own. A Mil-on/check engine lamp-on condition may also be present. Upon further investigation, one or more of the following DTCs may be set in the powertrain control module (PCM):

- P219A-Bank 1 Air-Fuel Ratio Imbalance
- P219B-Bank 2 Air-Fuel Ratio Imbalance
- P2173-High Airflow/Vacuum Leak Detected (Slow Accumulation)
- P2172-High Airflow/Vacuum Leak Detected (Instantaneous Accumulation)
- P0172-Fuel System 1/1 Rich
- P0175-Fuel System 2/1 Rich

Discussion: If a root cause is not discovered after (a) performing diagnostic testing for the transmission going into neutral (prior to part replacement), and/or (b) performing published diagnostic testing for the above faults, check for damage to the camshaft alignment pin located between the camshaft and camshaft gear (Figs. 1 & 2). If damage is found, make repairs as necessary and test drive to ensure the repair has corrected the condition.

This document does not authorize warranty repairs. This communication documents a record of past experiences. STAR Online does not provide any conclusions about what is wrong with the vehicle. Rather, it captures all previous cases known that appear to be similar or related to the vehicle symptom / condition. You are the expert, and you are responsible for deciding on the appropriate course of action.

Contact STAR Center, or your Technical Assistance Center Via TechCONNECT or eCONTACT ticket if no solution is found



STAR ONLINE PUBLICATION



Fig. 1 Cam pin view

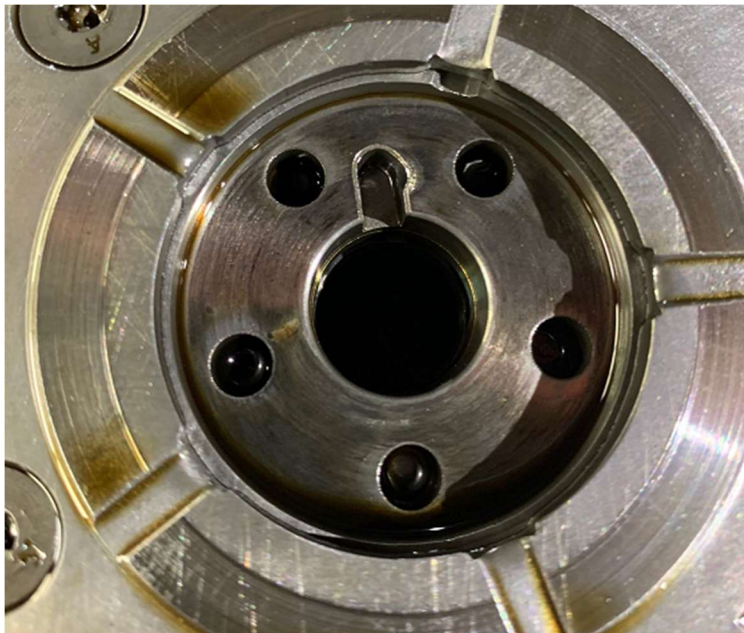


Fig. 2 Rear of cam gear/phaser view

This document does not authorize warranty repairs. This communication documents a record of past experiences. STAR Online does not provide any conclusions about what is wrong with the vehicle. Rather, it captures all previous cases known that appear to be similar or related to the vehicle symptom / condition. You are the expert, and you are responsible for deciding on the appropriate course of action.

Contact STAR Center, or your Technical Assistance Center Via TechCONNECT or eCONTACT ticket if no solution is found