



STAR ONLINE PUBLICATION



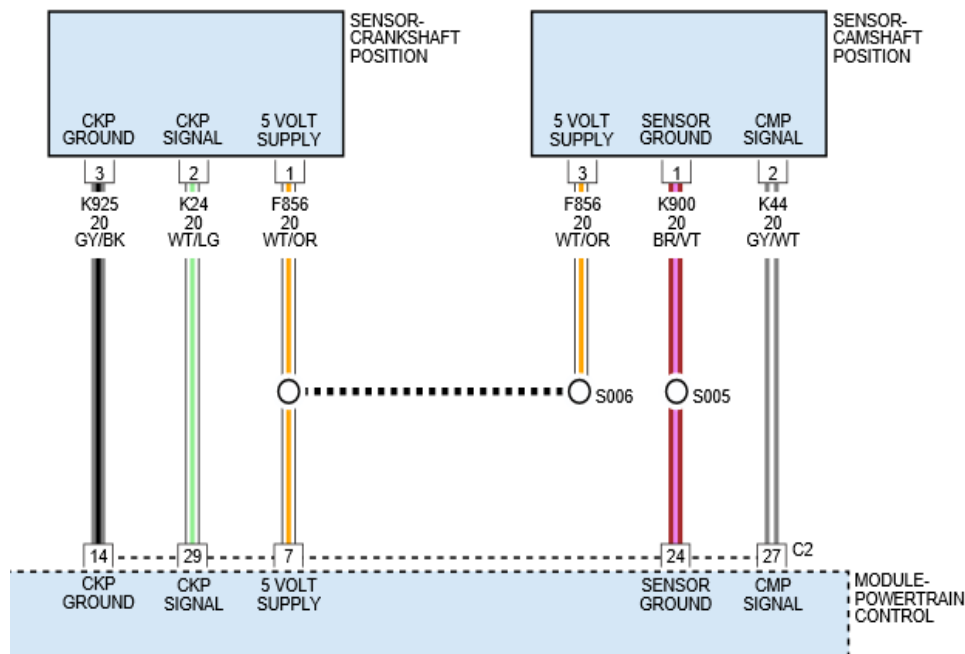
Case Number: S210800027

Release Date: 01/29/2021

Symptom/Vehicle Issue: CEL, Check Engine Lamp On, DTC P0339 Crankshaft Position Sensor Intermittent

Customer Complaint/Technician Observation: Owner complains that the Check Engine lamp comes on at times. Technician observed DTC P0339 CRANKSHAFT POSITION SENSOR INTERMITTENT. DTC may be stored or active.

Repair Procedure: Follow the diagnostics for DTC P0339 Crank Shaft Position Intermittent, confirming all the circuits at the crank position sensor and PCM for the involved DTC are secure and clean; wiggle test may help WITH INTERMITTENT WIRING CIRCUIT ISSUES. Inspect the target wheel as needed for damage, Example condition and circuits shown from a FIAT 500 Fig 1 ,2.



This document does not authorize warranty repairs. This communication documents a record of past experiences. STAR Online does not provide any conclusions about what is wrong with the vehicle. Rather, it captures all previous cases known that appear to be similar or related to the vehicle symptom / condition. You are the expert, and you are responsible for deciding on the appropriate course of action.

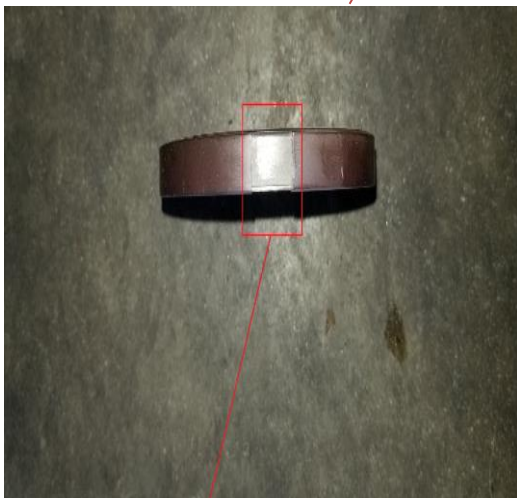
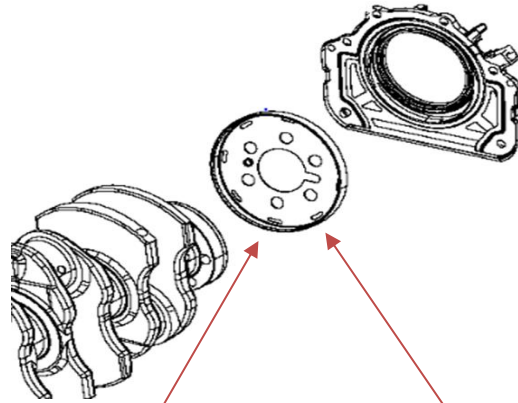
Contact STAR Center, or your Technical Assistance Center Via TechCONNECT or eCONTACT ticket if no solution is found



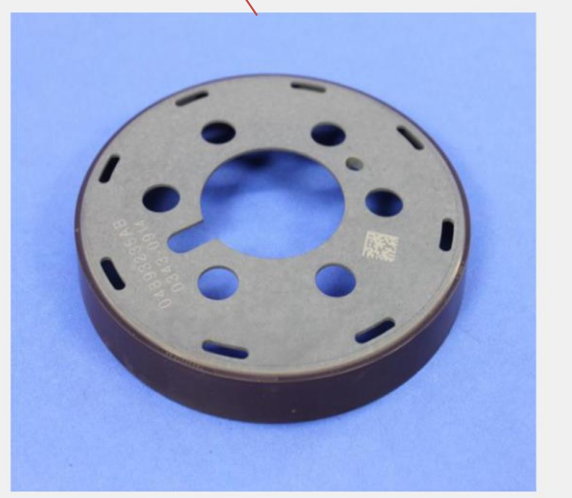
STAR ONLINE PUBLICATION



Fig 1



Target Tone Wheel
inspect for cracks or
damage



4893235AB

Fig 2

This document does not authorize warranty repairs. This communication documents a record of past experiences. STAR Online does not provide any conclusions about what is wrong with the vehicle. Rather, it captures all previous cases known that appear to be similar or related to the vehicle symptom / condition. You are the expert, and you are responsible for deciding on the appropriate course of action.

Contact STAR Center, or your Technical Assistance Center Via TechCONNECT or eCONTACT ticket if no solution is found