



Service Bulletin

Bulletin No.: 18-NA-371

Date: December, 2021

INFORMATION

Subject: 2016-2022 LCF Trucks - Download and Request a Chevrolet Vehicle Insight (Health) Report

Brand:	Model:	Model Year:		VIN:		Engine:	Transmission:
		from	to	from	to		
Chevrolet	Low Cab Forward 3500HD	2016	2018	—		4 CYL, L4, 3.0L, 4JJ1-TURBOCHARGED, 150HP, DIESEL ENGINE — RPO IZ3	AISIN A460, 6-SPEED AUTOMATIC TRANSMISSION, HMD, — RPO IX0
	Low Cab Forward 4500HD Low Cab Forward 4500XD	2017	2022			4 CYL, L4, 5.2L, 4HK1-TURBOCHARGED, 215HP, DIESEL ENGINE — RPO I1B	AISIN A465, 6-SPEED AUTOMATIC TRANSMISSION, HMD, — RPO IR7
	Low Cab Forward 5500HD Low Cab Forward 5500XD	2017				4 CYL, L4, 5.2L, 4HK1-TURBOCHARGED, 215HP, DIESEL ENGINE — RPO I1B	AISIN A465, 6-SPEED AUTOMATIC TRANSMISSION, HMD, — RPO IR7
	Low Cab Forward 6500XD	2018				5.2L, 4 CYL, 4HK1 Turbocharged Diesel Engine — RPO I1B	Allison Transmission, Automatic 6-Speed 2550RDS, Conv Clutch, with Park Pawl (with PTO Provisions) — RPO MPQ

Involved Country	United States
-------------------------	----------------------

Chevrolet Insight (Health) Report

The following information will advise the Chevrolet Medium Duty Service Technician on the process to download the new Chevrolet Vehicle Insight Report application and request an Insight Report from the Chevrolet Insight Report Creator.

Home SI LT SWDL SPS SPS Info Security Snap T2 View TL Print GDS 2 RPO LCF Utility GSI

Opel

Service- and Diagnostic-Information (SI)

Labour Times (LT)

Software Download (SWDL)

Service Programming System (SPS)

Calibration Information (SPS Info)

Security Access (Security)

Snapshot (Snap)

Tech2 View (T2 View)

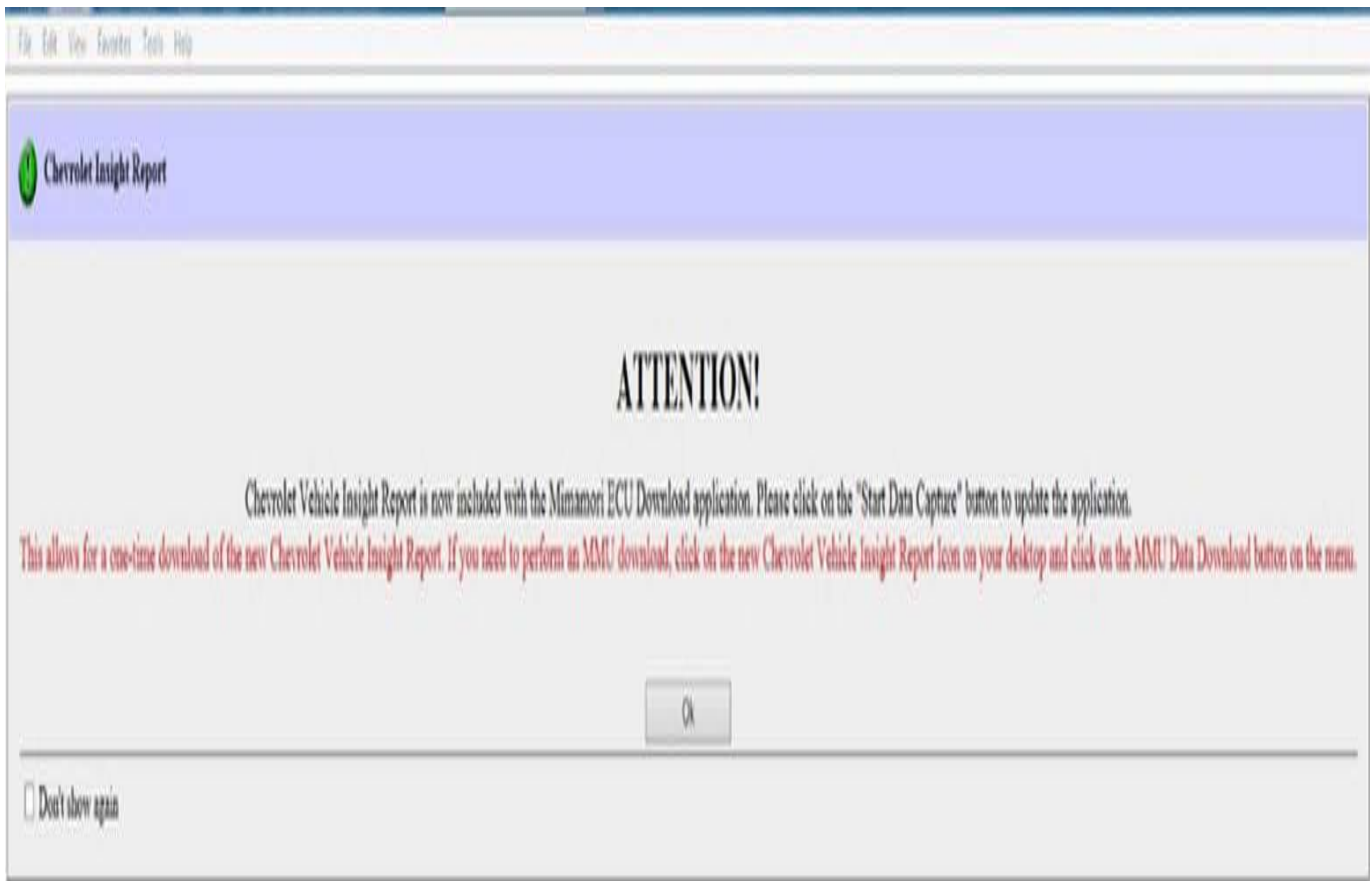
Techline Print (TL Print)

Global Diagnostic System 2 (GDS 2)

RPO Code Display (RPO)

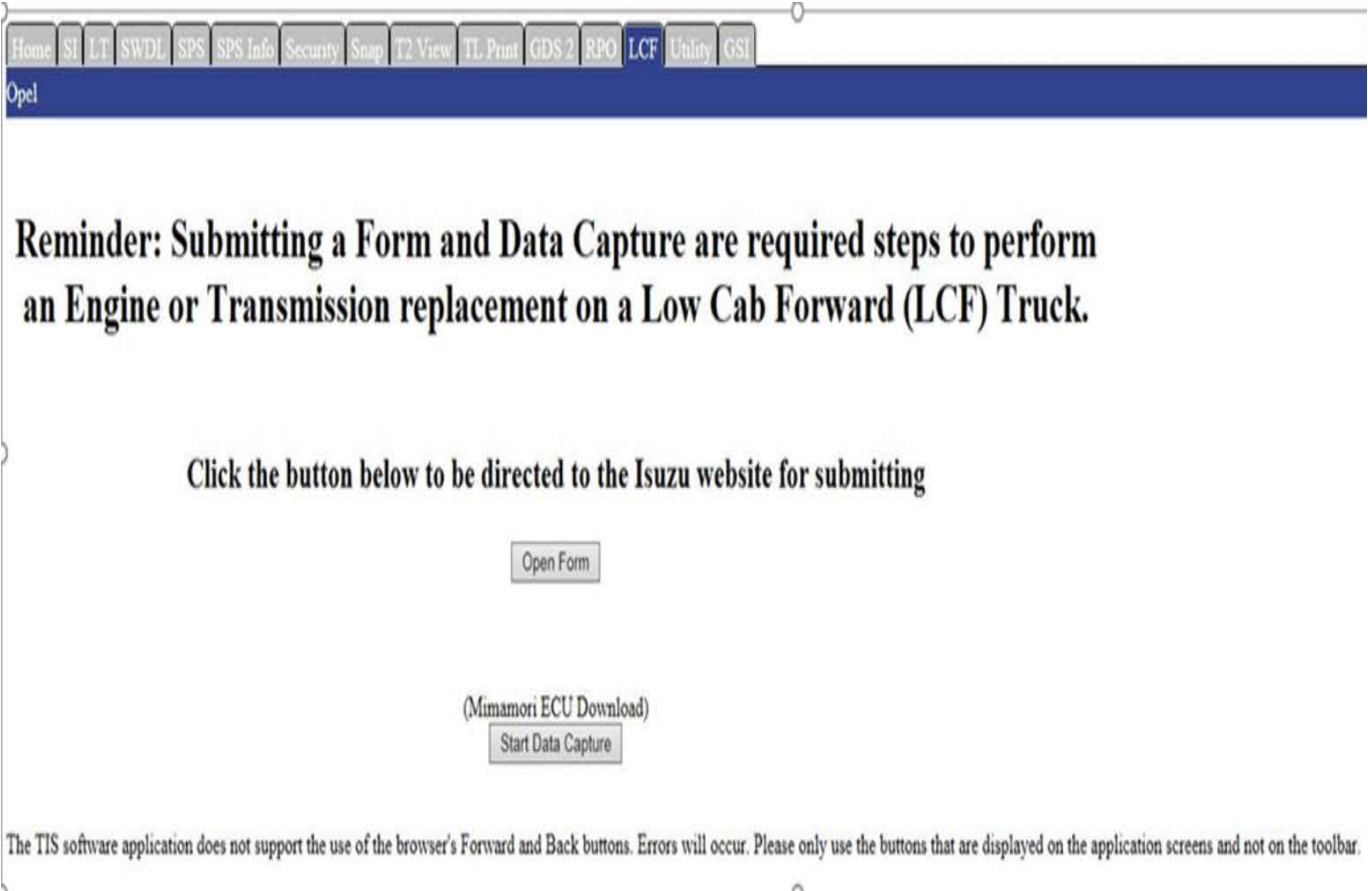
LCF Data Capture

1. Go to the TIS screen and click on the LCF tab indicated by the arrow.
2. A prompt will appear with a pop up box to start a data capture. If you are trying to perform an MMU download on a subject vehicle, continue with the Steps below. You will be able to perform that function at the end of this process.



5190612

3. Follow the instructions in the Attention pop up box.
This will not start an MMU Data Download, but it will start the new application download.



The screenshot shows a software application interface. At the top, there is a toolbar with the following menu items: Home, SI, LT, SWDL, SPS, SPS Info, Security, Snap, T2 View, TL Print, GDS 2, RPO, LCF, Utility, and GSI. Below the toolbar is a dark blue header bar with the word "Opel" on the left. The main content area contains the following text:

Reminder: Submitting a Form and Data Capture are required steps to perform an Engine or Transmission replacement on a Low Cab Forward (LCF) Truck.

Click the button below to be directed to the Isuzu website for submitting

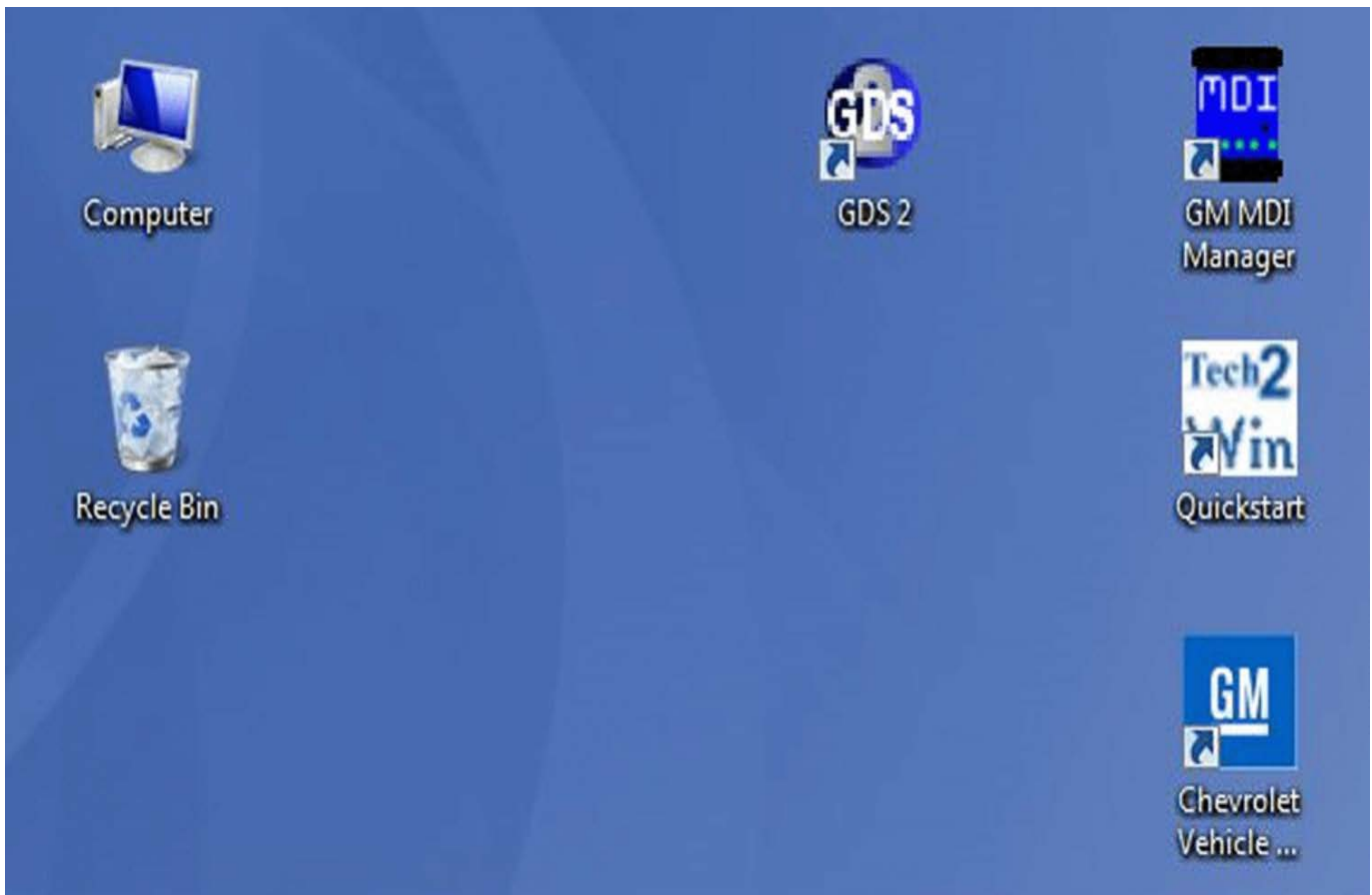
Open Form

(Mimamori ECU Download)

Start Data Capture

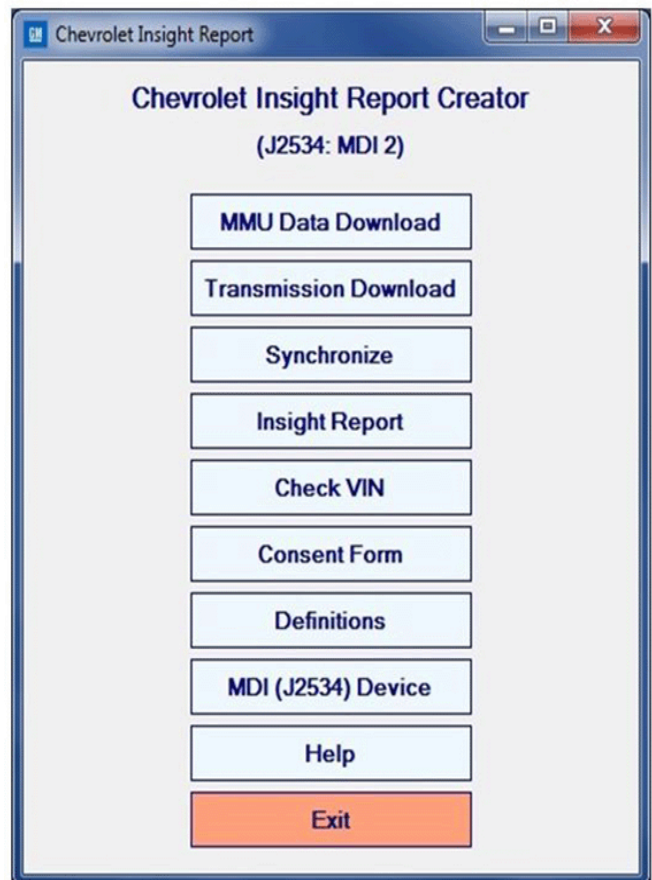
The TIS software application does not support the use of the browser's Forward and Back buttons. Errors will occur. Please only use the buttons that are displayed on the application screens and not on the toolbar.

4. Click on the Start Data Capture button.



5190899

5. Once Step 4 is completed, a new Chevrolet Vehicle icon will appear on the desktop.
6. Click on the Chevrolet Vehicle icon to enter the application.
7. The Chevrolet Insight Report window will appear.



5191337

8. Click on the **MMU Data Download** button within the Chevrolet Insight Report Creator screen to perform the MMU Data Download as needed. Click on the **Insight Report** button within the Chevrolet Insight Report Creator screen to download the Insight Report as needed.

Version Information

Version	2
Modified	Released on January 07, 2019 Revised December 23, 2021 – Added 2020, 2021, 2022 Model Years

