



## Preliminary Information

### PIP5811 Crankshaft Balancer Contacting Timing Cover on Replacement Engine

#### Models

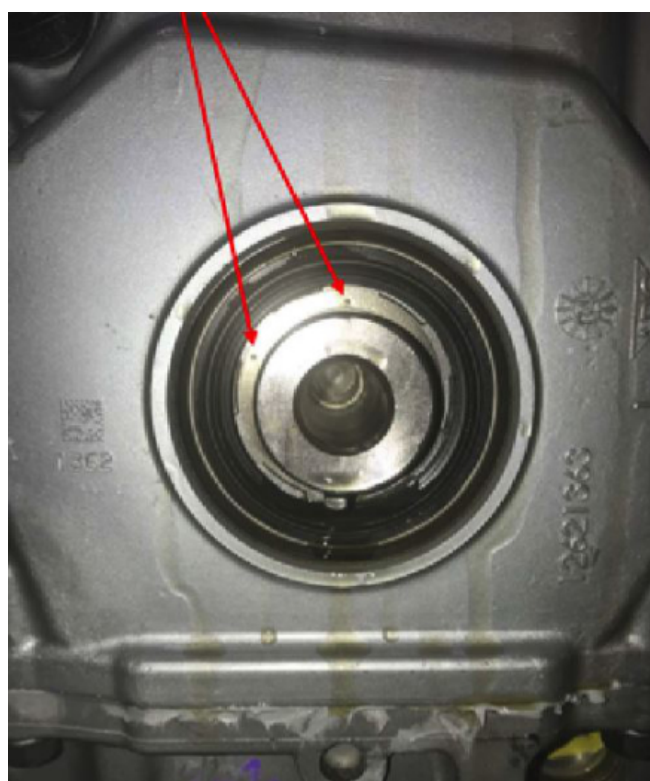
Brand:	Model:	Model Years:	VIN:		Engine:	Transmissions:
			from	to		
Cadillac	Escalade	2015 - 2020	All	All	6.2L L86	All
Chevrolet	Silverado 1500	2014 - 2018	All	All	4.3L LV3, 6.2L L86	All
Chevrolet	Silverado 1500 LD	2019	All	All	4.3L LV3, 6.2L L86	All
Chevrolet	Suburban	2015 - 2020	All	All	6.2L L86	All
Chevrolet	Tahoe	2015 - 2020	All	All	6.2L L86	All
GMC	Sierra 1500	2014 - 2018	All	All	4.3L LV3, 6.2L L86	All
GMC	Sierra Limited 1500	2019	All	All	4.3L LV3, 6.2L L86	All
GMC	Yukon	2015 - 2020	All	All	6.2L L86	All

Involved Region or Country	North America
Condition	Crankshaft Balancer Pulley Contacting Timing Cover After Installation on Replacement Engine Part Numbers 19368174 and 19368176
Cause	Incorrect Crankshaft Timing Gear Installed

#### Correction:

If it has been found the crankshaft balancer pulley is contacting the timing cover after installation please check the following:

To identify if the engine was assembled with the incorrect crankshaft timing gear inspect for 5 dimples on the crankshaft timing gear (the incorrect gear will NOT have these dimples present), the dimples should be visible with the cover installed and balancer removed (see below):





Further confirmation can be made with the timing cover of and measuring from the end of the crankshaft to the end of the gear (see below), this measurement should be approximately 1 1/16" (27.0mm).



If it has been confirmed that the lower crankshaft timing gear is incorrect, crankshaft timing gear P/N 12631214 along with a new oil pump will need to be installed.

#### Parts Information

Description	Part Number	Quantity
<b>SPROCKET, CR/SHF</b>	12631214	1
<b>PUMP, OIL</b>	12686433	1

#### Warranty Information

For vehicles repaired under the Powertrain coverage, use the following labor operation. Reference the Applicable Warranties section of Investigate Vehicle History (IVH) for coverage information.

Labor Operation	Description	Labor Time
*4088108	Timing Gear Replacement	8.4hrs (add 1.2hrs for 4.3L LV3 engine)
*This is a unique Labor Operation for Bulletin use only.		

#### Version History

Version	1
Modified	7/15/2021 - Created.



GENERAL MOTORS