



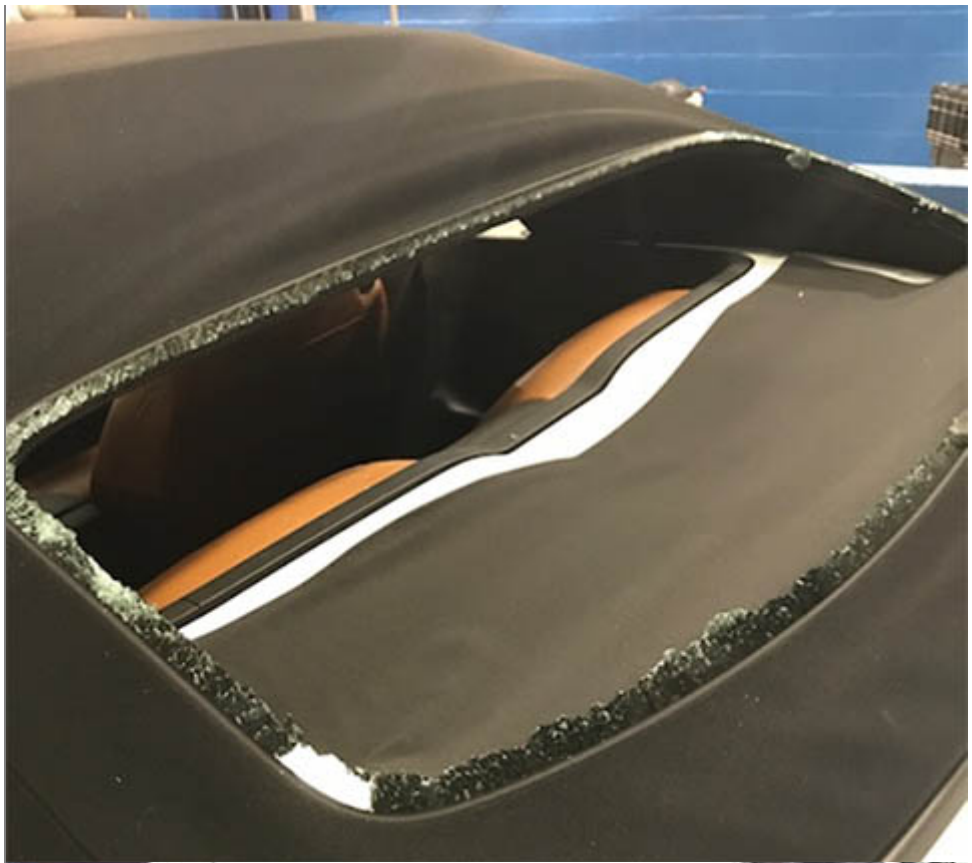
Preliminary Information

PIC6336A Folding Top Service Tips to Prevent A Broken Rear Glass Assembly

Models

Brand:	Model:	Model Years:	VIN:		Engine:	Transmissions:
			from	to		
Chevrolet	Camaro	2016 - 2022	All	All	All	All

Involved Region or Country	All
Additional Options (RPO)	CM8 - Power Folding Top
Condition	Some technicians may comment that the back glass, which is an integral part of the folding top canvas, had broken after cycling the folding top assembly. This will be noticed very soon after a folding top canvas or a side rail has been replaced for service.



Cause	The cause of this concern may be due to improper reassembly of the folding top linkage where it connects to the back glass.
-------	---

Correction:

If this concern is encountered, dealership technicians are to first inspect the linkage that connects the folding top frame to the back glass that is attached to the folding top canvas.

The most common issue seen is mistakenly putting the top linkage on the inboard side of the back glass attachment point.

This creates additional stress on the back glass.

In this condition, when the top is operated several times, the back glass may unexpectedly crack or shatter.

This will usually not occur during the first top cycle attempt after service. Usually, this happens after the folding top is cycled several times.

See photo below of a correctly assembled folding top linkage at the rear glass attachment point.



The folding top linkage that attaches to the rear glass **MUST** be located on the outboard side of the back glass bracket.

The pin that holds it together is inserted from the inboard side of the linkage.

It first goes through the back glass bracket, after that it goes through the top frame linkage.

A gray plastic washer **MAY** be found in this assembly. Servicing technicians are to note if this is present during disassembly.

Finally, the spring clip is installed on the outboard side of the top frame linkage.

If it has been determined that this linkage has been correctly reassembled, dealership technicians are to reinspect the cord / strap routing of the entire canvas top.

Under no circumstances will a cord, strap, or eyelet need to be cut, nor will ANY rivets need to be drilled out when replacing the folding top cover on these vehicles.

If this has been done during the removal of the canvas, carefully check over this area, as it is highly likely that the cord or strap in question has not been routed correctly during reassembly of the top.

It is easiest to obtain a similar Camaro convertible at the dealership and compare the cord routing to a known good vehicle.

A video for the Camaro folding top canvas replacement has been released as well. This can be found in the Emerging Issues section of the Center of Learning. Check out the August edition. This Camaro section runs from the 14:26 mark to the 32:15 mark.

Version History

Version	2
Modified	07/18/2018 - Created on. 12/06/2021 - Updated Model Years.

