

Wiring the Sofa Module to the Control Panel

Follow additional steps at the bottom of the instructions, if the power sofa has already failed to operate.

- 1) Remove the breaker panel from its's location by unscrewing the four screws in the corner of the panel.



- 2) Unplug the sofa connection that is in #1234



- 3) Plug the new module in the #1234 plug.



- 4) Plug the original sofa pug from step #2 into the new module.



- 5) Connect the red power lead to the battery power lead on the back of the breaker panel.



- 6) Connect the black ground lead to the grounding bar located near the floor area under the breaker panel.



7) Secure the sofa module to the rear bench or floor.



8) Re-install the breaker panel.



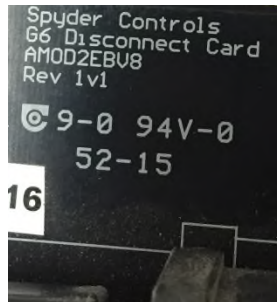
- **Note: Additional steps if the power sofa has failed and will not extend or retract, and it is determined that the G6 disconnect card has failed.**

Additional Steps

A) With the breaker panel removed as in step #1.

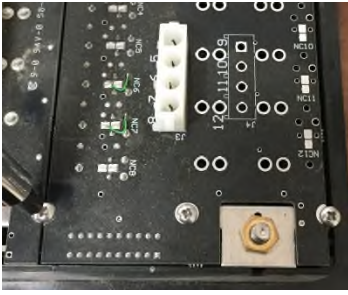


B) Disconnect all the wiring going to card G6 Disconnect Card.



C) Remove the G6 disconnect card from the DC distribution panel.

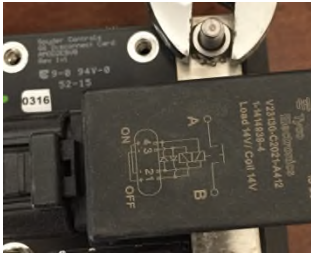
a) Remove the three small Phillips screws from the bottom of the G6 panel.



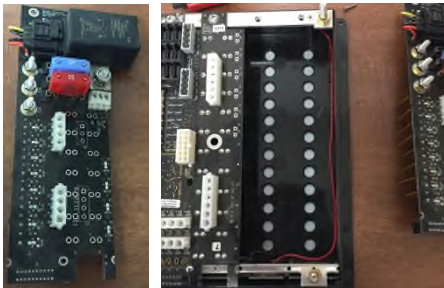
b) Remove the two large Phillips screws from the top of the G6 panel.



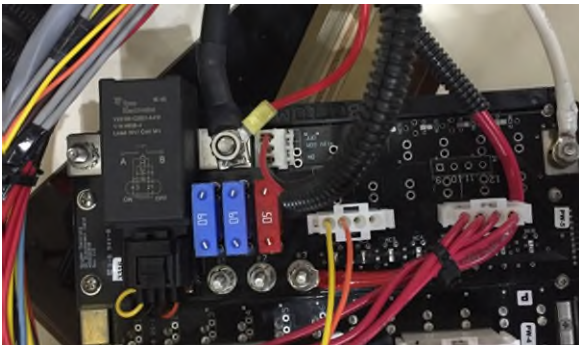
c) Remove the 7/16' nut from the top connection point on the G6 panel.



d) Remove the G6 panel from the back of the distribution panel by lifting straight up on the panel. The end of the panel where you removed the small screws is slipped over the cards in the distribution panel.



D) Install the new G6 disconnect card and reattach the wiring.



E) Follow steps 2-8 listed above for the sofa module installation.

