



INSTRUCTION TO SERVICE

ITS60288		10/08/21
SECTION:	400-Structures	
WRITTEN BY:	Jeff Kosheluk	
SUBJECT:	Inspection of the upper bulkhead bracket	
ISSUE:	Inspect upper bulkhead brackets to check for cracks	
SUMMARY:	This document will provide details on locations to inspect for cracks.	

ITS60288

Ref. NHTSA Recall No.	Ref. Transport Canada Recall No.
Not Applicable	Not Applicable

THIS ITS DOCUMENT SHOULD BE RETAINED AND REFERRED TO FOR FUTURE MAINTENANCE UNTIL THE NEW FLYER PARTS AND/OR SERVICE MANUAL IS UPDATED TO REFLECT WORK DONE AS A RESULT OF THIS DOCUMENT. ENSURE THAT THIS DOCUMENT IS AVAILABLE FOR PARTS AND MAINTENANCE STAFF GOING FORWARD.

PROCEDURE:

1. Set park brake and chock wheels.
2. Turn the main battery disconnect switch to the "OFF" position.

NOTE:

ITS will include inspection and rework as follows:

1. **Inspect for cracks and repair at the upper tube area and upper bulkhead bracket on the rear of the front coach.**

Note: If cracks found, ITS 59082 must be used. If no cracks found, ITS 59266 will be used.

3. Locate the rear upper bulkhead access door near the articulated joint.



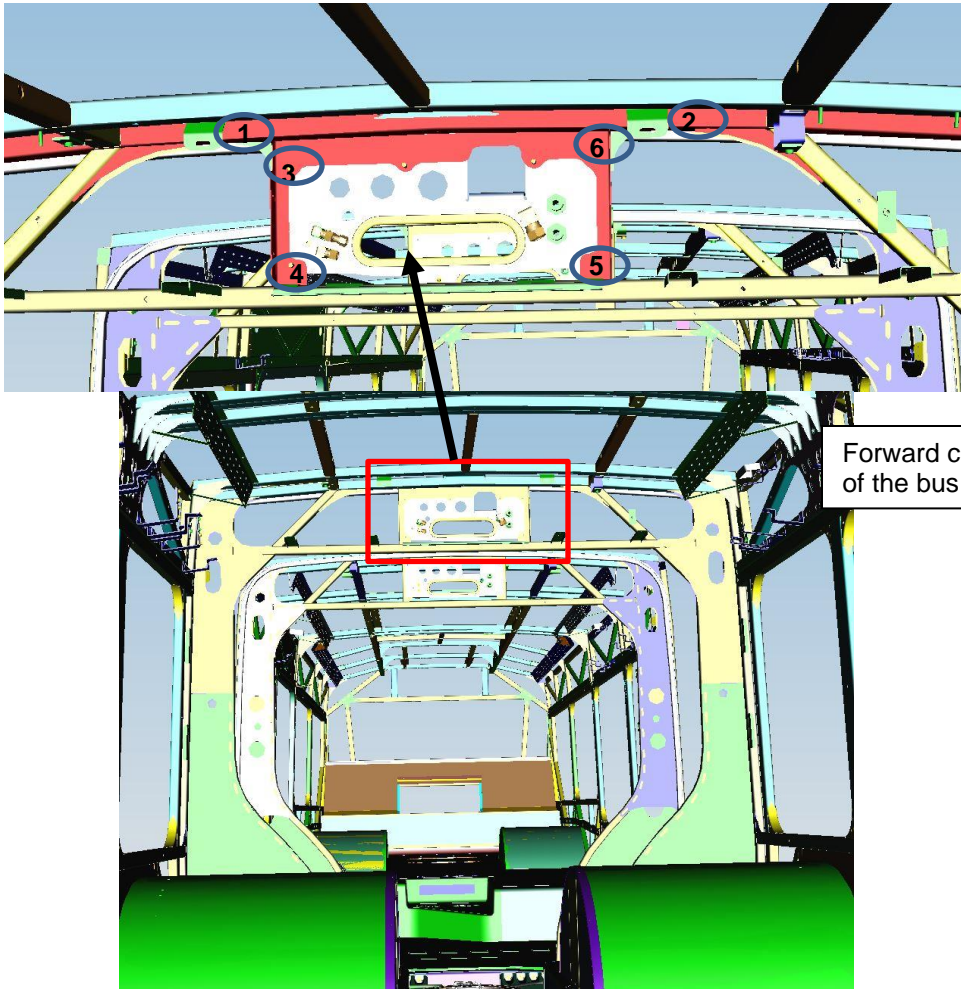
FIGURE 1: SHOWN INTERIOR COVERS TO BE REMOVED TO GAIN ACCESS

4. Inspect the "6" areas labelled.

Provide details if the area has weld cracks/or broken tube/bracket.

SR # _____
 Unit # _____
 Mileage# _____

- 1.
- 2.
- 3.
- 4.
- 5.
- 6.



Forward coach, looking towards rear of the bus at artic joint area.

FIGURE 2: SHOWN LOCATION TO INSPECT UPPER BULKHEAD BRACKET & TUBE FOR CRACKS

5. Shown view of typical cracks.

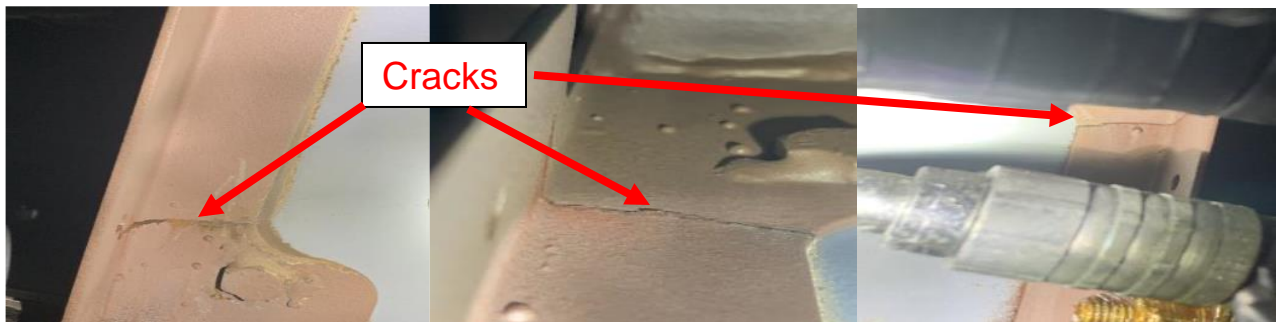
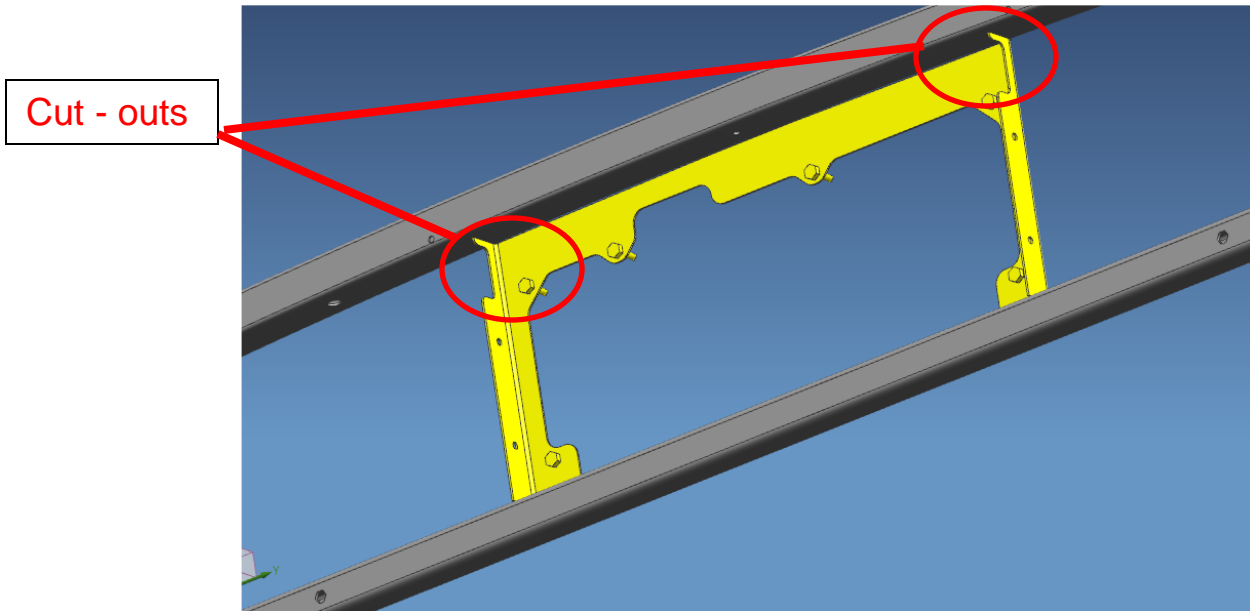


FIGURE 3: SHOWN VIEW OF TYPICAL CRACKS

6. Remove all tools and debris from work area to return coach to service.
7. Turn the main battery disconnect switch to the "ON" position.



LABOUR ESTIMATE				
	Operation	Number of Technician(s)	Hours	Labor Time T X HR
1	Inspect upper bulkhead bracket for cracks.	1	0.5	0.5

PARTS REQUIRED					
Item	Part Number	Description	Qty. per Coach	Units	Notes
1	N/A	N/A	N/A	EA	

SPECIAL TOOLS REQUIRED					
Item	Part Number	Description	Qty.	Units	Notes
1	N/A	Flashlight & inspection mirror			