



ACCESSORY INSTALLATION

**EDGE TELEMATICS INSTALLATION GUIDE -
CONVENTIONAL**

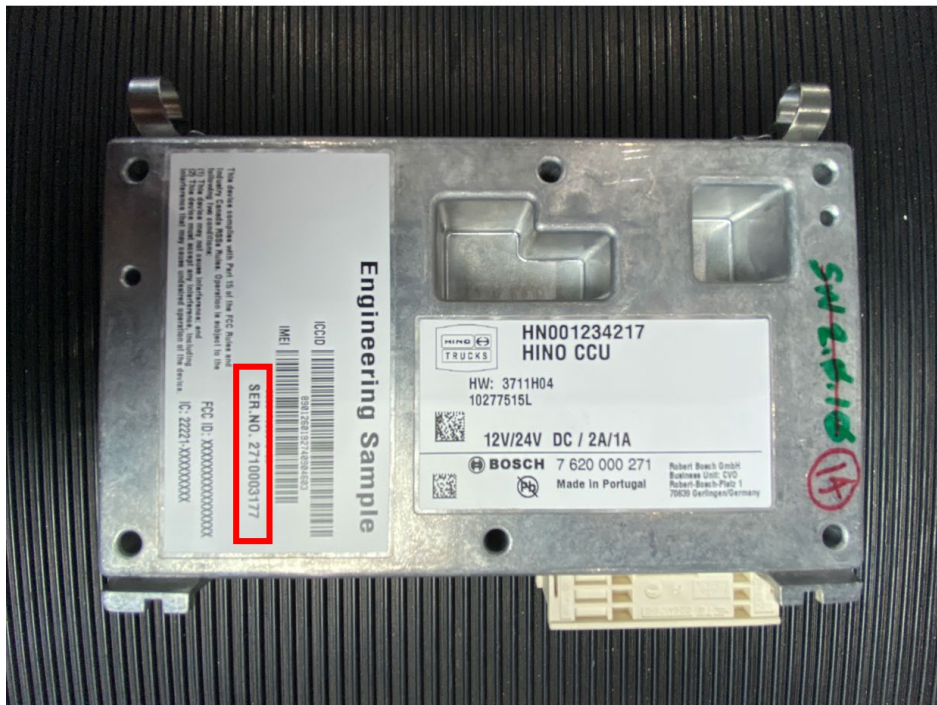
**GROUP: 0-GENERAL
BULLETIN NO: A-21-004
DATE: 11-30-2021**

Subject: This procedure will take you step-by-step for installing the Bosch telematics hardware on a 2020 and newer Hino Conventional 238-338.

Tools:

| |
|-------------------------|
| #1 Slotted Screwdriver |
| 10mm Socket |
| Ratchet |
| #2 Phillips Screwdriver |

1. Record the TCU number on the TCU label which is located on the bottom of the device.



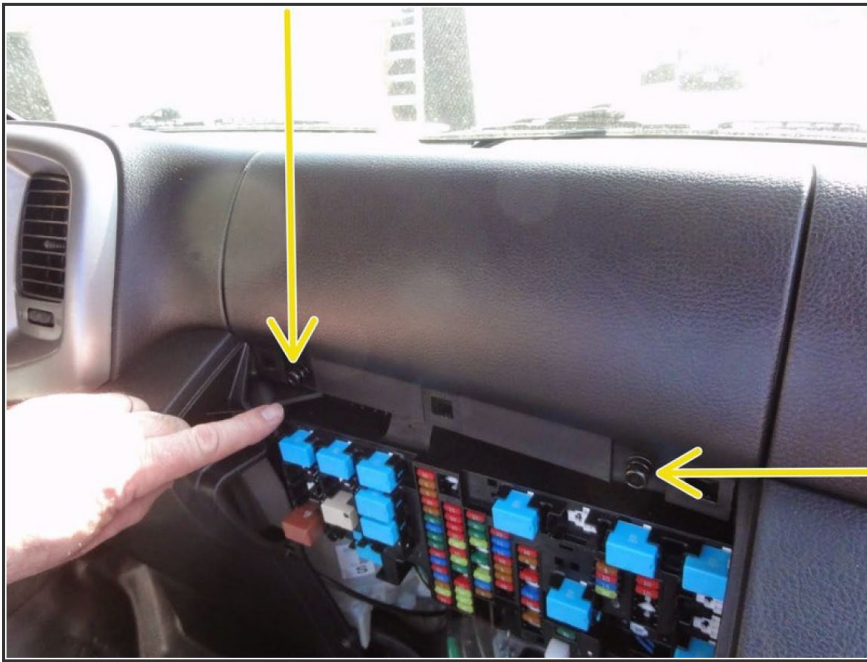
2. Record the VIN number which is located in the drivers door jamb.



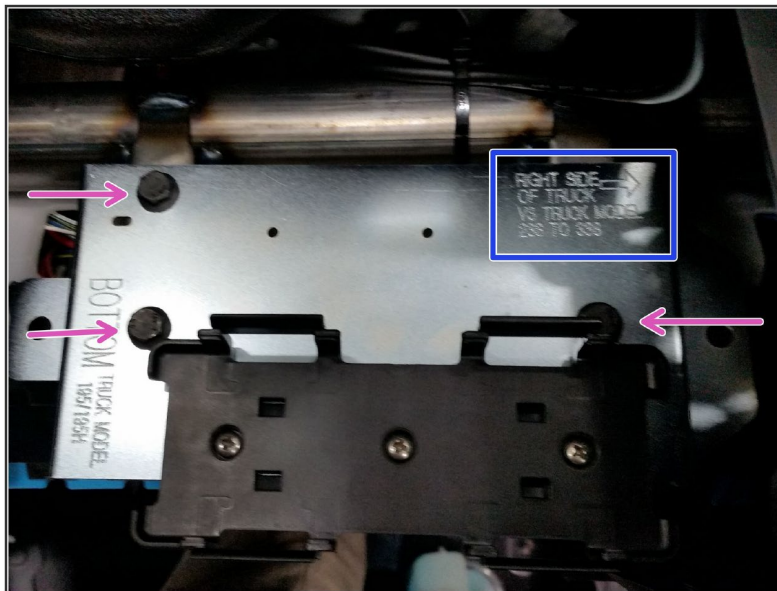
3. Remove the lower dash panel on the passenger side of the vehicle.



4. Remove the 2 bolts that retain the top dash panel and remove the panel.



5. Remove the 3 bolts and remove the Telogis bracket as seen in the picture below.

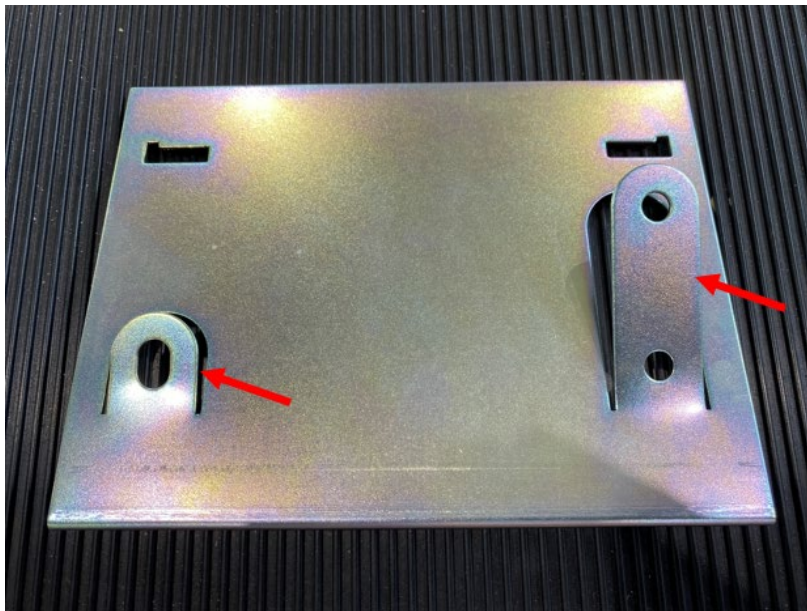


6. Disconnect the white plug under the fuse box and remove the harness. Cut zip ties if necessary.



7. Bend the tabs on the bracket so the module is level and install the bracket. Install the 3 bolts and torque.

Specified Torque: 10 Nm (89 in-lbs)



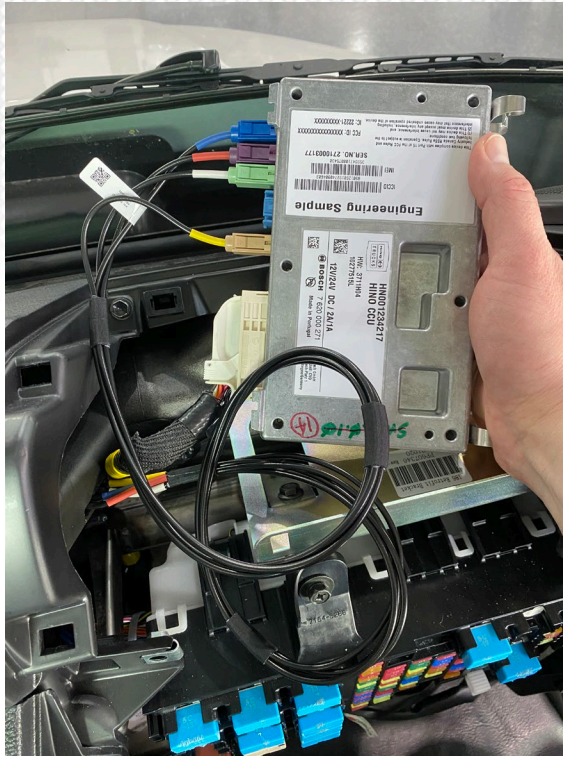
8. Install the antenna into the dash area and install the wiring harness. Use a stick foam to secure if necessary.



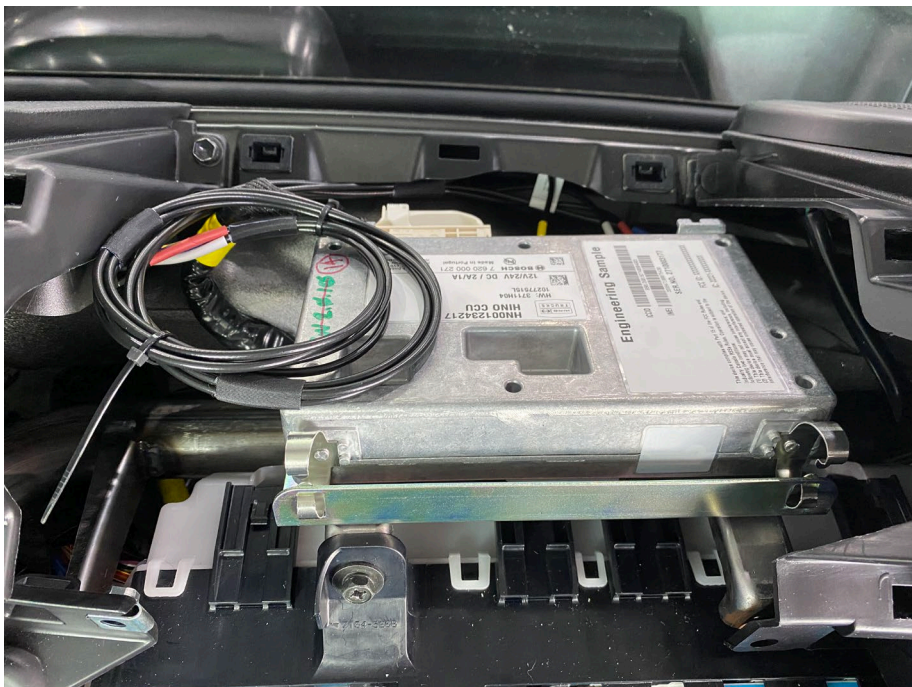
9. Locate the white connector under the fuse box as shown in the picture below. Plug the Molex from the device into the white plug. Run the cable up towards the device, coil and secure the extra cable as needed.



10. Connect the white plug and the four antenna connectors to the module. Using zip ties, coil and secure any excess wires.



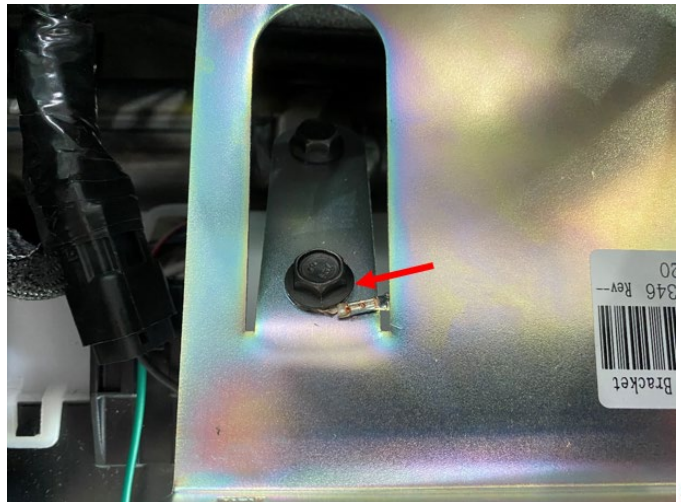
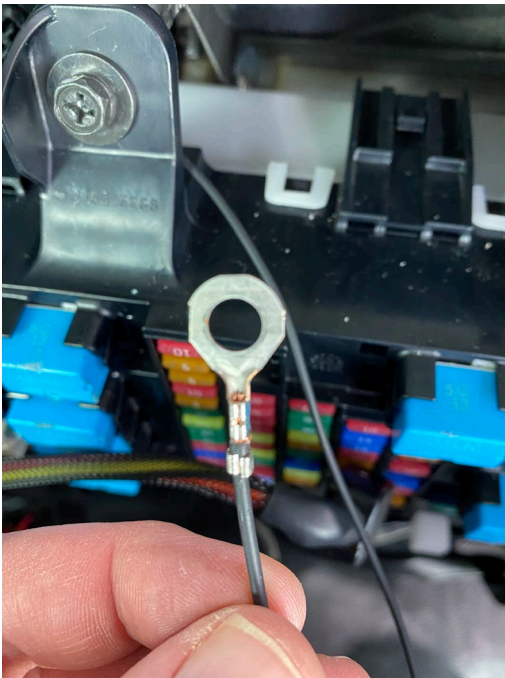
11. Insert the module into the bracket and clip it in as seen in the picture below.



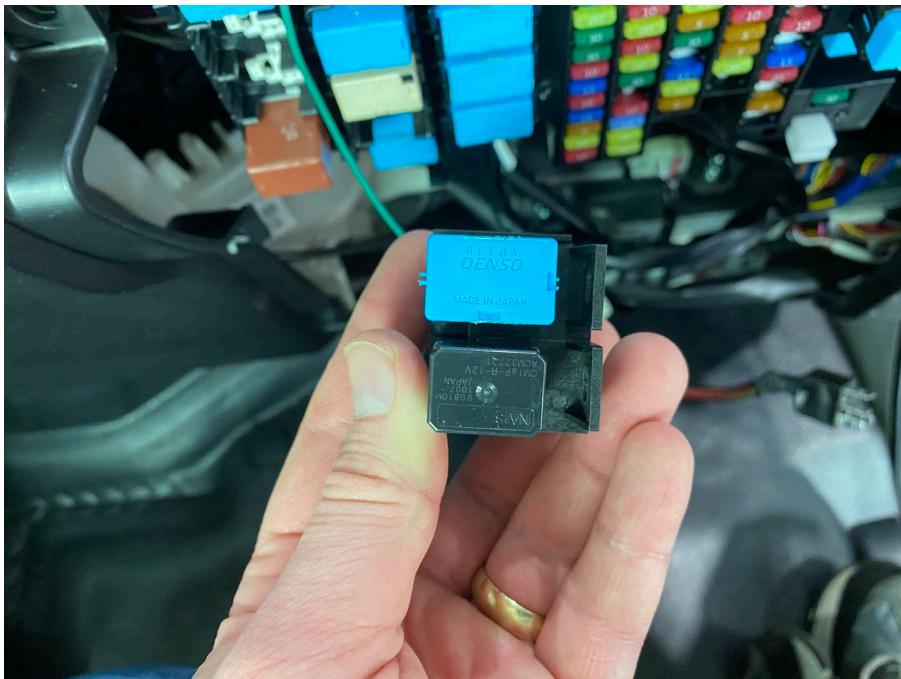
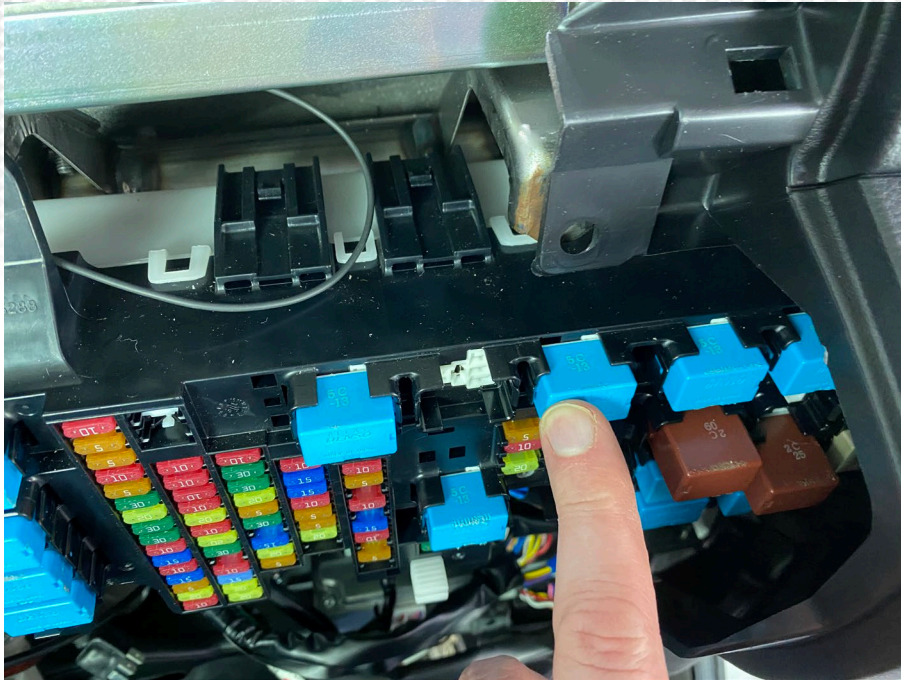
12. Connect the black connector to the harness.



13. Ground the wire to the front support.



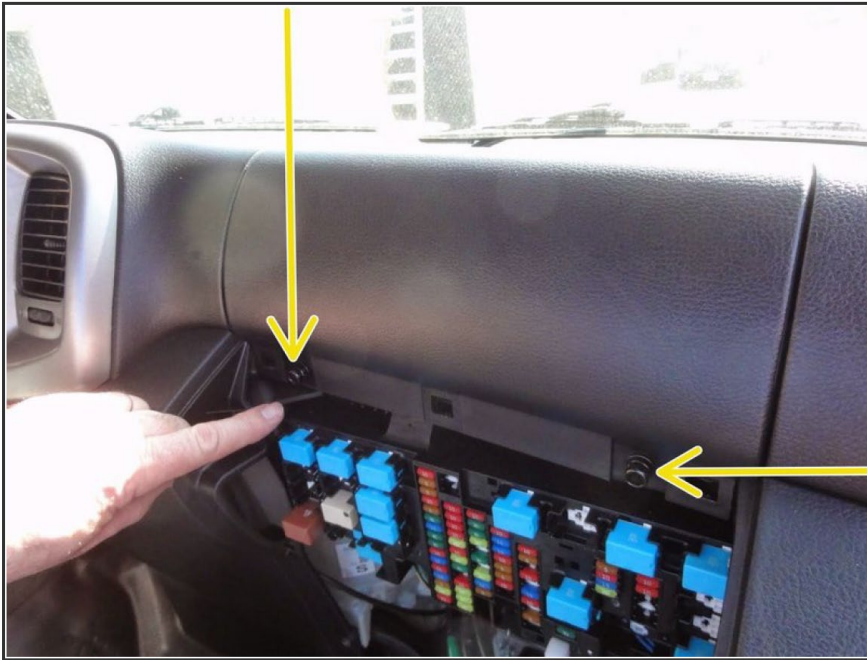
14. Remove the relay (power relay 3) out of the fuse box and install it in the relay block.



15. Install the connector into the fuse box and secure the relay block.



16. Install the top dash panel and the 2 bolts.



17. Install the lower dash panel.



18. Before verifying operation, login to Ultimate Portal at [Hino Ultimate](#)

Username: hinoservice@hino.com

Password: NKh9Uc2@ZQ

HINO TRUCKS **ULTIMATE**

YOUR CONNECTED EDGE

The Ultimate Ownership advantage is here from Hino Trucks! You can now take command of your vehicle with location tracking, monitor performance on a live dashboard, stay up to date on your trucks health status with real-time fault notifications and enhance your service experience with case communication. You can even run self-service remote updates as well as add on advantage telematics services from any of our preferred partners. It's all just a small part of our commitment to giving you the Connected Edge. [Learn More.](#)

Download on the App Store
GET IT ON Google Play

Email Address
Password

Sign In

Support: 855-510-HINO (4466), ultimatesupport@hino.com

Corporate Login

19. Turn the ignition to the “On” position and go to the TCU installation. Enter the trucks VIN number/TCU Serial and select search unit.

HINO TRUCKS TCU Installation

Search and Link >

Completed Verification Pending

| TCU SERIAL | ICC ID | IMEI | IMSI | BOSCH PRODUCT | BOSCH SERIAL | PR |
|------------|---------------------|-----------------|-----------------|---------------|--------------|----|
| 2710003110 | 8901260192740904447 | 359947100015741 | 310260194090444 | 762000027101 | 3110 | Ju |
| 2710003105 | 8901260192740904397 | 359947100017051 | 310260194090439 | 762000027101 | 3105 | Ju |
| 2710003106 | 8901260192740904397 | 359947100017051 | 310260194090439 | 762000027101 | 3106 | Ju |
| 2710003108 | 8901260192740904397 | 359947100017051 | 310260194090439 | 762000027101 | 3108 | Ju |
| 2710003111 | 8901260192740904397 | 359947100017051 | 310260194090439 | 762000027101 | 3111 | Ju |
| 2710003103 | 8901260192740904397 | 359947100017051 | 310260194090439 | 762000027101 | 3103 | Ju |
| 2710003104 | 8901260192740904397 | 359947100017051 | 310260194090439 | 762000027101 | 3104 | Ju |
| 2710003177 | 8901260192740904397 | 359947100017051 | 310260194090439 | 762000027101 | 3177 | Ju |
| 2710003170 | 8901260192740904397 | 359947100017051 | 310260194090439 | 762000027101 | 3170 | Ju |
| 2710003215 | 8901240282700045 | 359947100017051 | 310260194090439 | 762000027101 | 3215 | Ap |
| 2710003184 | 8901260192740904397 | 359947100017051 | 310260194090439 | 762000027101 | 3184 | Ju |
| 2710003214 | 8901240282700045 | 359947100017051 | 310260194090439 | 762000027101 | 3214 | Ap |
| 2710003172 | 8901260192740904397 | 359947100017051 | 310260194090439 | 762000027101 | 3172 | Ju |

Search And Link

VIN number
VIN NUMBER

Or
TCU Serial
CTPG_XXXXXXXXXX

Cancel Search







20. Once the truck has reported in, green lights should be displayed for the unit status, battery voltage, and GPS coordinates. Once the green lights are displayed on all three items, the vehicle has passed QA and the installation is complete.


Search And Link

VIN number
JHHRDM2H3LK008184

TCU Serial
2710003192

Telemetry Data Validation Refresh Data 

| | | |
|-----------------|-----------|---|
| Unit Status | Active |  |
| Battery Voltage | 12.32V |  |
| GPS Coordinates | - , - , - |  |

 Show Troubleshooting Steps

Cancel

Note: If some or all of the items have red lights, then allow it to run for 30 seconds and select refresh. Repeat this step up to three times.

If by the end of the three attempts the truck still does not pass, turn the truck off and allow it to sit for 30 seconds. Restart the truck and select refresh. Repeat this step up to three times if necessary.

If some or all of the items still failed to pass, please reach out to Ultimate Support for assistance.

Via email at Ultimatesupport@hino.com or phone at 855-510-4466

