



SERVICE BULLETIN

SB-21-002 CONVENTIONAL FUEL SENDER LEAK

GROUP: 22-FUEL SYSTEM

BULLETIN NO: SB-21-002

DATE: 12-16-2021

REF: HMM-210412-B1

Subject: Certain 2011MY-2020MY Conventional trucks equipped with an J08 engine.

Note: This technical service bulletin is provided as technical information and is not authorization for a warrantable repair.

OVERVIEW:

Certain vehicles may exhibit fuel residue accumulation around the fuel level sensor or cover plate in certain conditions, including if the vehicle is equipped with dual fuel tanks. Updated fuel level sensor bolt sealing washers have been made available to address this condition.

Parts:

Part Number	Part Description	Quantity
9471290600	Washer, Seal	5 Per Tank
83361E0070	Gasket, Fuel Sender	1 Per Tank

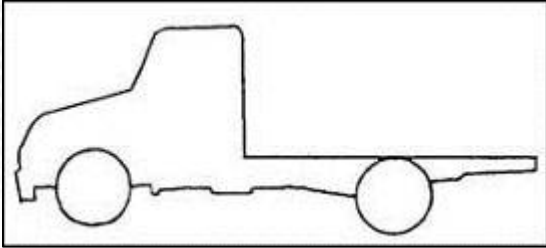


BEFORE YOU BEGIN:

- Read and understand all instructions and procedures before you begin the work.
- Read and follow all **WARNINGS** and **NOTICES** set forth in this publication, the Owner's Manual, and Workshop Manual. These alerts help to avoid damage to components, serious personal injury, or both.
- Protect against risk of fire and smoke ventilation hazard. This repair involves a remedy action to one or more component parts of the fuel system. Risk of fire and smoke ventilation hazards is possible where heat comes into contact with fuel, gas, and or residual oil vapors. Read and follow all **WARNINGS** and **NOTICES** included in the Owner's Manual and Workshop Manual that address fire. Conduct any repairs in a workspace equipped with fire protection system.
- Park the vehicle on a flat, level and solid surface.
- Place the gear shift lever in "Neutral" or "Park".
- Apply the parking brake firmly and confirm parking brake activation.
- Turn off the engine and remove the key from the ignition switch.
- Always wear safety glasses or goggles to protect your eyes.
- Place wheel chocks in front of and behind all the wheels to prevent the vehicle from moving.



1. Park the vehicle on a flat, level and solid surface. Confirm the engine is stopped, the ignition switch is in the off (LOCK) position, and the key is removed.



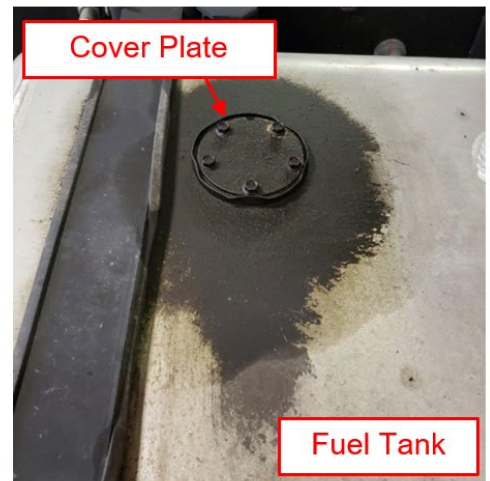
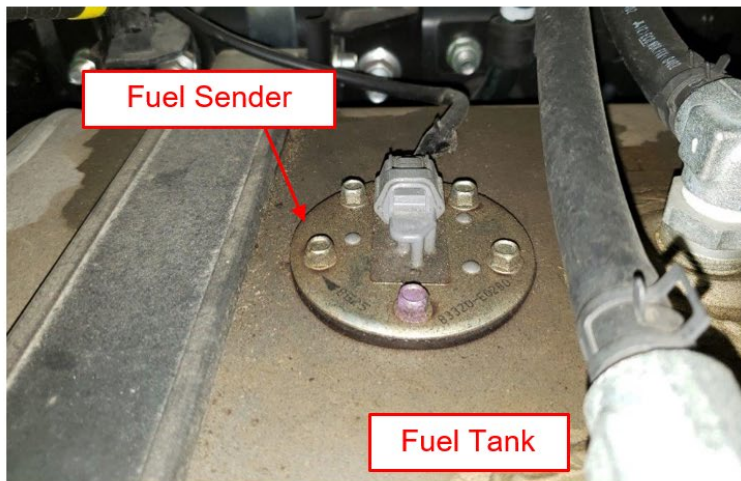
2. Apply the parking brake. Chock all of the wheels.



WARNING: The following repair procedure involves a remedy action to one or more component parts of the fuel system. Risk of fire and smoke ventilation hazards is possible where heat comes into contact with fuel, gas, and or residual oil vapors. Refer and adhere to all **WARNINGS** and **NOTICES** included in the Owner's Manual and Workshop Manual that address fire. Conduct any repairs in a workspace equipped with a fire protection system.

Repair Procedure:

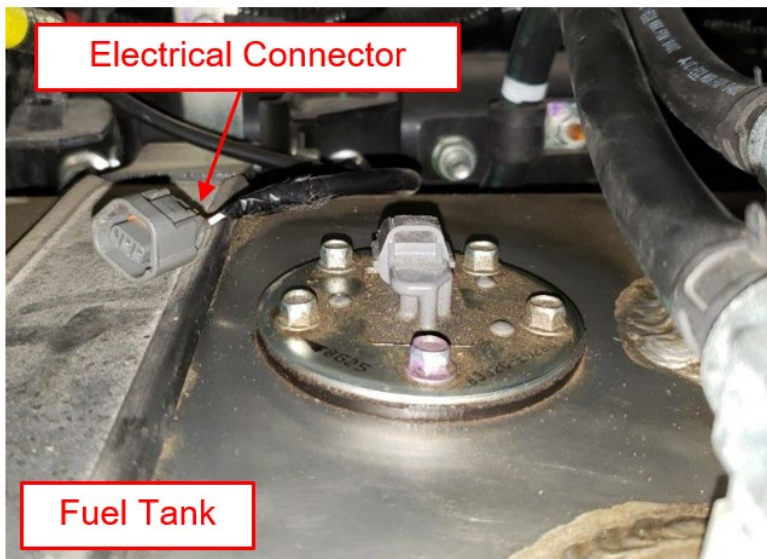
1. Visually identify the fuel sender or cover plate that is in need of repair. Fuel staining and collection of dust around the area may be visible. It will not be necessary to remove the fuel tank for this repair. Examples shown in the pictures below. The same repair method is used for residue located at the sender or residue located at the cover plate.



2. To prevent contamination into the fuel tank, carefully clean the top of the fuel sender or cover plate and then the area surrounding the fuel sender or cover plate.



3. If the repair is being performed on a fuel tank with a fuel level sender, disconnect the fuel level sender electrical connector. If the repair is being performed on a tank with a cover plate, proceed to step 4.

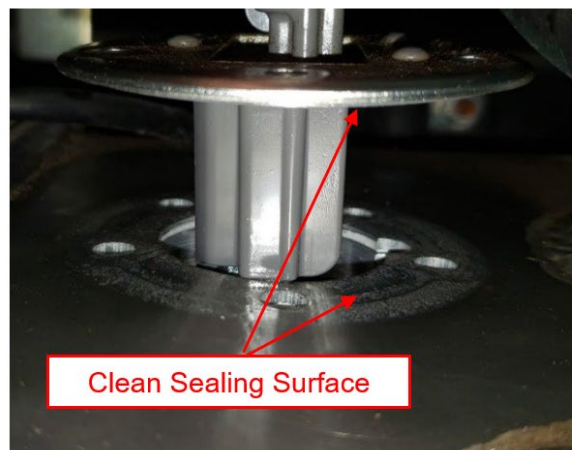
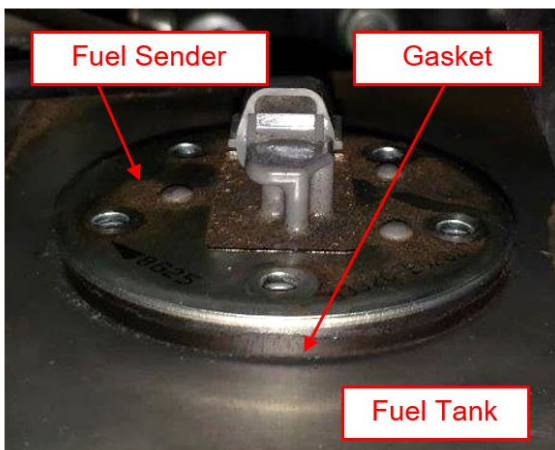


4. Remove the five bolts securing the fuel level sender or cover plate. Remove the rubber washers from the bolts and discard the washers. Retain the bolts for later use.

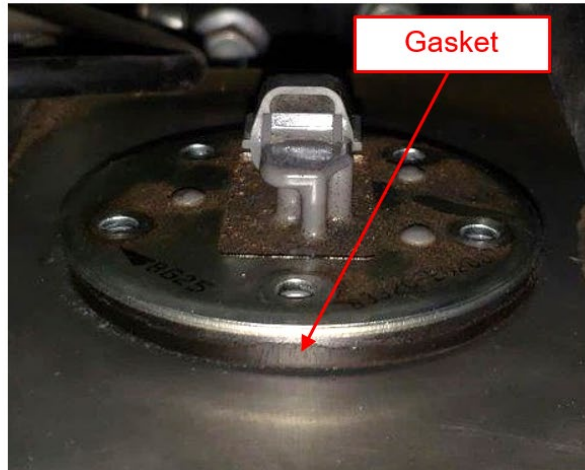
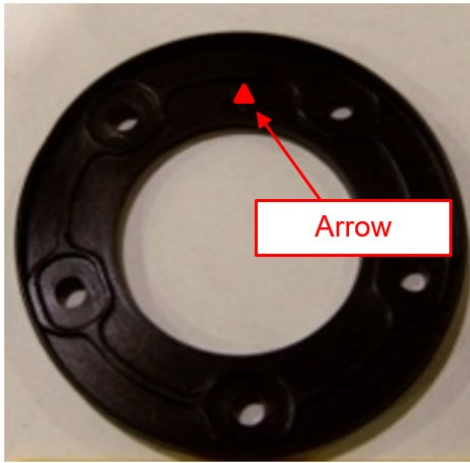


5. Raise the fuel sender or cover plate from the fuel tank slightly and pull the old fuel sender gasket off around the fuel sender and discard the gasket. Clean the sealing surface of the fuel tank and fuel sender with a clean rag.

NOTICE: Do not allow debris to enter the fuel the tank.

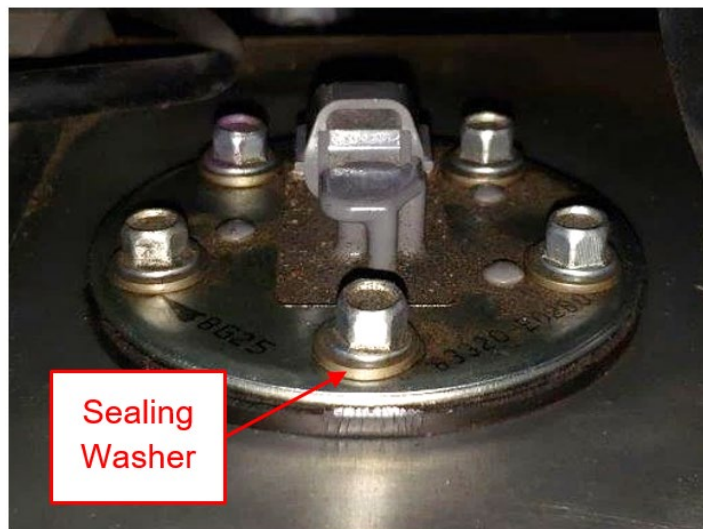


6. Slip a new 83361-E0070 gasket around the fuel sender. Make sure the side with the arrow is up and that the arrow points towards the center of the vehicle. The arrow is used to properly index the bolt holes in the gasket to the bolt holes in the fuel tank.

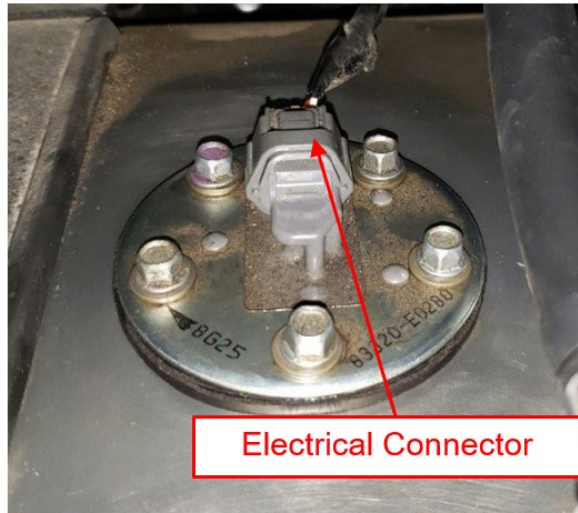


7. Fit a 94712-90600 sealing washer around each of the 5 bolts that were previously removed in step 4. Install the bolts into the fuel sender and tighten to the specified torque below using a properly calibrated torque wrench.

Specified Torque: 20 lb-in (2.2 Nm)



8. Reconnect the fuel level sender electrical connector.



FINAL INSPECTION PROCEDURE

1. To complete this Technical Service Bulletin, review the bulletin and confirm the following:

- Sealing washers have been installed on all five sending unit bolts.
- A new gasket was installed under the sending unit.
- The bolts have been tightened to the specified torque.
- The fuel sender electrical connector is connected.

CLAIM APPLICATION

Reimbursable in accordance within the terms and policies of the Hino limited warranties.

Fuel Tank Sender Sealing Washer Installation:

- a) Labor charge: 0.4 Hours per tank
- b) Warranty code: 82622
- c) Trouble code: 11
- d) Operation code: 82601CRE
- e) Original failed part: 9471290600

