

December 23, 2021

Version 2

Warranty Extension: B-612P Catalina Blue Pearl or Bright Kinetic Blue Pearl Paint

Supersedes 20-047, dated September 29, 2020, to revise the information highlighted in **yellow**.

AFFECTED VEHICLES

Year	Model	Trim Level	VIN Range
2016–18	ILX	All vehicles with B-612P Catalina Blue Pearl or Bright Kinetic Blue Pearl paint	Check the iN VIN status for eligibility.

REVISION SUMMARY

Under WARRANTY CLAIM INFORMATION, the operation number was updated.

BACKGROUND

This warranty extension applies only to 2016–18 ILX vehicles painted **B-612P (2016 models: Bright Kinetic Blue Pearl) or (2017-18 models: Catalina Blue Pearl)**.

The exterior paint around the front windshield and/or rear glass may peel off. American Honda is extending the warranty on the paint of the affected vehicles to **8 years** from the original date of purchase with no mileage limit. This warranty extension does not apply to other paint issues like rock chips, scratches, bird droppings, sap, wraps, dents, collision damage, client-induced damage, etc.

Do an iN VIN status inquiry to see if the vehicle is eligible. American Honda will update this bulletin and the iN VIN status when this warranty extension on affected vehicles has expired.

This warranty extension applies only to factory-applied paint.

The warranty extension does not apply to any vehicle that has ever been declared a total loss or sold for salvage by a financial institution or insurer, or has a branded or similar title under any state's law.

This warranty extension applies only to the panels listed in the WARRANTY CLAIM INFORMATION section if they have a paint peeling problem. All paint repairs **must** have DPSM approval before starting work.

To ensure your claim is properly processed, make sure the following requirements are met:

- **DPSM authorization before repairing any vehicle** - To request authorization, send a ProFirst Certified Body Shop estimate with close up photos of each affected panel to your DPSM.
- **Clear photos** - Refer to service bulletin 10-001, *Photos for Warranty Paint Repair Claims*. Take clear photos showing the overall affected area, and provide close ups as needed to illustrate the defect. Also upload a photo of the doorjamb label that shows the VIN with the warranty claim. If more than one panel is affected, photos of each affected panel must also be uploaded to the warranty claim.
- **Claim submission** - Before submitting a warranty claim, make sure you include a copy of the ProFirst Certified Body Shop final invoice.

CLIENT INFORMATION: The information in this bulletin is intended for use only by skilled technicians who have the proper tools, equipment, and training to correctly and safely maintain your vehicle. These procedures should not be attempted by “do-it-yourselfers,” and you should not assume this bulletin applies to your vehicle, or that your vehicle has the condition described. To determine whether this information applies, contact an authorized Acura automobile dealer.

CLIENT NOTIFICATION

Owners of affected vehicles will be sent a notification of this campaign. Do an iN VIN status inquiry to make sure the vehicle is shown as eligible.

CORRECTIVE ACTION

Inspect the vehicle and, if necessary, have a ProFirst Certified Body Shop repaint the entire affected panel(s) with a color base coat and clear coat paint after obtaining DPSM approval.

PARTS INFORMATION

If you need to replace any moldings, emblems, or clips, reference the parts catalog for applicable part numbers, and submit them in your warranty claim.

PHOTO REQUIREMENTS

- Submit photos for each affected area. Refer to service bulletin 10-001, *Photos for Warranty Paint Repair Claims*.
- You must submit clear photos showing the overall affected areas, closeups of each affected panels clearly showing the paint peel defect, and a photo of the doorjamb label that shows the VIN. If the photos were not approved by the DPSM before the repair, your claim may be debited.
- Take photos of every affected area, and save them with the repair order for 36 months. If American Honda requests the photos and they were not saved, your claim may be debited.

WARRANTY CLAIM INFORMATION

- **Prior authorization must be approved by your DPSM before doing any work related to painting the vehicle.** To request authorization, send a Pro First body shop estimate and photos to your DPSM for approval.
- **Make sure your claim includes clear photos.** Refer to service bulletin 10-001, *Photos for Warranty Paint Repair Claims*. Take clear photos showing the overall affected area, and provide closeups as needed to illustrate the defect. Take and submit a photo of the doorjamb label that shows the VIN with the warranty claim. If more than one panel is affected, closeup photos of each affected panel must be uploaded to the warranty claim.
- Upload a copy of the **ProFirst Certified Body Shop final invoice** with the warranty claim prior to submittal.
- **Only sublet claims will be accepted. Prior flat rate based warranty information claims will not be accepted.**
- B-612P was Bright Kinetic Blue Pearl on 2016 models and Catalina Blue Pearl on 2017-18 models.

The following panels are covered under the warranty extension. **Repair only the affected panels.**

Body Panel – Front Left & Right A-Pillar	Body Panel – Left Rear Quarter Panel
Roof	Body Panel – Right Rear Quarter Panel

Select the appropriate warranty information based on the year and model. Make sure to attach your sublet claims, ProFirst final invoice, and photos. Add any applicable time if camera aiming was done.

NOTE: The multipurpose camera (if equipped) needs to be aimed whenever the windshield is removed.

Operation Number	Description	Flat Rate Time	Defect Code	Symptom Code	Template ID	Failed Part Number
9815A1	Repair planning and DTC check.	1.5 hr	6P800	A8O00	B20047A	62100-TV9-A30ZZ
A	Aim multipurpose camera.	0.9 hr				
9815A1	Repair planning and DTC Check – Vehicle without a camera.	1.5 hr	6P800		B20047B	

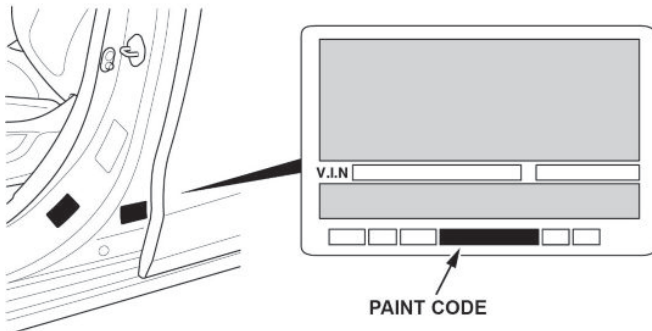
Skill Level: Repair Technician

INSPECTION PROCEDURE

1. Check the paint code on the driver's doorjamb to confirm the model year and paint code.

NOTE: If the year/paint color does not match, this bulletin does not apply.

Model Year	Paint Code and Color
2016–18 ILX	B-612P Bright Kinetic Blue Pearl or Catalina Blue Pearl



2. Clean the vehicle, and bring it inside a shop with overhead lighting.

NOTE: Do not inspect the vehicle in direct sunlight as the sun's intensity may affect your ability to see any potential damage.

3. Inspect the area around the front windshield and rear glass for paint peeling. Determine if the areas affected carry over to the roof and the left and right rear quarter panels.
- If the paint on the vehicle appears similar to the images below, go to REPAIR PROCEDURE.
 - If the paint looks different from the images below, this warranty extension does not apply. Paint issues like rock chips, scratches, bird droppings, sap, wraps, dents, collision damage, client induced damage, etc. are not covered.

NOTE: If there are any questions about vehicle coverage under this warranty extension, contact your DPSM.



REPAIR PROCEDURE

NOTE: All work must be completed by a ProFirst Certified Body Shop.

1. Make sure you have DPSM authorization to repaint the affected panels.
2. Using service information instructions, remove vehicle components as required to ensure paint adhesion and coverage of all affected areas:
 - **Roof** - remove the following as needed: the windshield, rear glass, roof rails, moldings, and XM Antenna which requires carefully dropping the roof liner to access the antenna nut. If the vehicle is equipped with a moonroof, it does not need to be removed. Open it and tape off the open area.
 - **Rear Quarter Panels** - Remove any trim pieces, taillights, rear glass, or any other unpainted items as needed, and blend the color to the existing paint.

NOTE:

- Be very careful when handling the windshield and/or rear glass during removal.
 - Protect moonroof and glass moldings from the repainting process.
3. Using best body shop techniques, remove the paint from the repair area, then sand the affected area using P240 or P320 sandpaper.

NOTE:

- Make sure to sand the paint to a feathered edge.
 - Sand the paint down to the E-coat. If the E-coat is compromised, sand down to the bare metal.
4. Clean the prepared area for repainting.
 - Remove the dust.
 - Clean the area with a wax and grease remover according to the paint manufacturer's recommendations.
 5. Mask the vehicle to prevent overspray.
 6. Prime the vehicle. Refer to service bulletin 16-055, *Material Requirements for Warranty and Goodwill Paint Repairs*, for a list of approved paints and materials that must be used for warranty repairs.
 - Apply epoxy primer to any bare metal areas.
 - Apply 2K primer as necessary to level repaired areas.
 - Block sand and feather the primer edge to create a level and even surface.
 7. Clean the primed area for repainting.
 - Remove the dust.
 - Clean the area with a wax and grease remover according to the paint manufacturer's recommendations.
 8. Create spray out panels to ensure there is a color match.
 9. Paint the prepared areas following the paint manufacturer's recommendations. Refer to service bulletin 16-055, *Material Requirements for Warranty and Goodwill Paint Repairs*, for a list of approved paints and materials that must be used for warranty repairs.
 - B-612P: Apply the basecoat, then apply a 2K clearcoat. There should be a minimum of **2 mil** dry film build.
 - Bake the finish according to the paint manufacturer's guidelines.
 - After the paint has cured, polish it.
 10. Install all of the remaining parts in the reverse order of removal.
 11. Connect the i-HDS, and clear any DTCs that were set during the repair.
 12. If the vehicle is equipped with a multipurpose camera, and LKAS camera, and the windshield was removed, make sure to aim the camera(s). Refer to the service information.
 13. Give your warranty clerk the ProFirst receipt. For the warranty claim to be paid, a copy of the ProFirst Certified Body Shop final invoice must be included in the warranty claim.

END