

Special Tool Information

911 (997) 1st Gen.

0916.1

Binder - Special Tools & Equipment

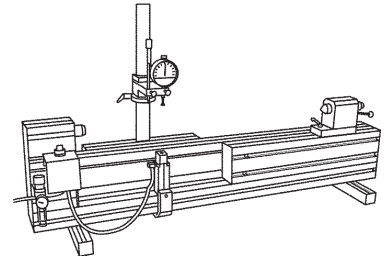
New Special Tools

Attention: **Service Manager/Service Technician**

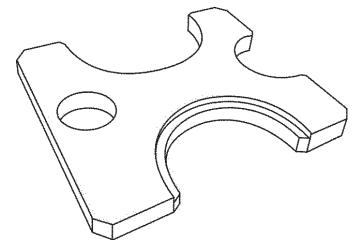
Information: The following minimum service requirement Porsche Special Tools apply to your dealership.

Transmission repairs for the AISIN manual transmission for the 911 (997) 1st Gen. have been approved on August 2009. (Transmission types G97/01 and G97/31). The nine new special tools described here are required for all repairs and include the measuring device 9746 for measuring bearing clearance. It is used to measure bearing clearance on the gears and is set using graduated needle cages. 9746 has been released as a rental as of December 2021.

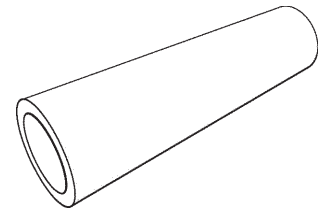
Tool Number: 9746
Order Number: 000 721 974 60
Description: Measuring Device
Application: For measuring radial play/bearing clearance on gear sets.
Model: 911 (997) 1st Gen. Transmission Types G97/01 & G97/31
Note: Rental



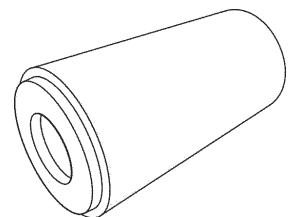
Tool Number: 9708
Order Number: 000 721 970 80
Description: Pressure Plate
Application: For press-on and press-off procedures, particularly for drive/output shaft gears.
Model: 911 (997) 1st Gen. Transmission Types G97/01 & G97/31



Tool Number: 9708/1
Order Number: 000 721 970 81
Description: Sleeve
Application: To install the main bearing.
Model: 911 (997) 1st Gen. Transmission Types G97/01 & G97/31



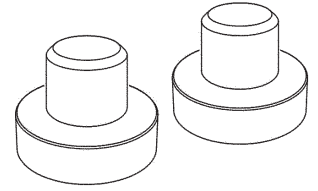
Tool Number: 9708/2
Order Number: 000 721 970 82
Description: Pressure Piece
Application: To install the main bearing in conjunction with 9708/1.
Model: 911 (997) 1st Gen. Transmission Types G97/01 & G97/31



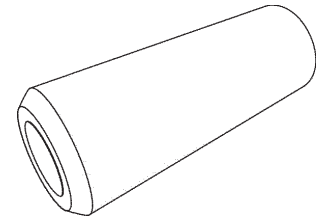
911 (997) 1st Gen.
0916.1

Special Tool Information

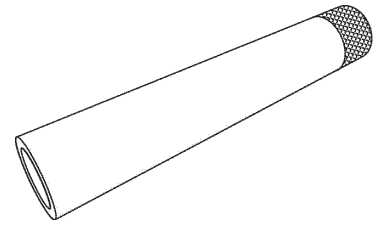
Tool Number: 9708/3
Order Number: 000 721 970 83
Description: Pressure Pieces (Set of 2)
Application: To press-on gear wheel pairs.
Model: 911 (997) 1st Gen. Transmission Types G97/01 & G97/31



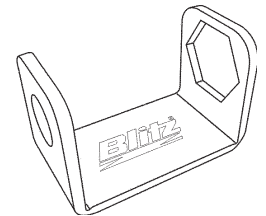
Tool Number: 9708/4
Order Number: 000 721 970 84
Description: Pressure Piece
Application: To install the driveshaft.
Model: 911 (997) 1st Gen. Transmission Types G97/01 & G97/31



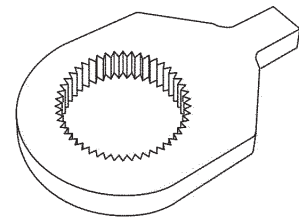
Tool Number: 9708/5
Order Number: 000 721 970 85
Description: Pressure Piece
Application: To press-on the main bearing and gears onto the driveshaft.
Model: 911 (997) 1st Gen. Transmission Types G97/01 & G97/31



Tool Number: 9740
Order Number: 000 721 974 00
Description: Holding Device
Application: Used to hold the driveshaft when tightening the driveshaft nuts.
Model: 911 (997) 1st Gen. Transmission Types G97/01 & G97/31



Tool Number: 9741
Order Number: 000 721 974 10
Description: Socket Wrench Insert
Application: To R & R the driveshaft nuts.
Model: 911 (997) 1st Gen. Transmission Types G97/01 & G97/31



Dealership	Service Manager	_____	Shop Foreman	_____	Service Technician	_____	_____	_____	_____
Distribution	Asst. Manager	_____	Warranty Admin.	_____	Service Technician	_____	_____	_____	_____
Routing									

Important Notice: Technical Bulletins issued by Porsche Cars North America, Inc. are intended only for use by professional automotive technicians who have attended Porsche service training courses. They are written to inform those technicians of conditions that may occur on some Porsche vehicles, or to provide information that could assist in the proper servicing of a vehicle. Porsche special tools may be necessary in order to perform certain operations identified in these bulletins. Use of tools and procedures other than those Porsche recommends in these bulletins may be detrimental to the safe operation of your vehicle, and may endanger the people working on it. Properly trained Porsche technicians have the equipment, tools, safety instructions, and know-how to do the job properly and safely. Part numbers listed in these bulletins are for reference only. The work procedures updated electronically in the Porsche PIWIS diagnostic and testing device take precedence and, in the event of a discrepancy, the work procedures in the PIWIS Tester are the ones that must be followed.