



SIB 11 14 21

SERVICE ACTION: CHECK ROCKER ARMS AND REPLACE WHERE NEEDED

2021-11-17

MODEL

Model	Model Description
K63	S 1000 R
K69	S 1000 XR

The affected vehicles have been marked with campaign number **0011490000** in AIR.

In order to determine if a specific vehicle is affected by this campaign, it will be necessary to verify the vehicle VIN in AIR (Aftersales Information Research). Based on the response of the system, either proceed with the repair or take no further action. Please note, open campaigns or vehicle stops may not appear in DCS Warranty Vehicle Inquiry or sales systems until 24-72 hours after they are announced, therefore AIR is always the recommended method for determining open campaigns and vehicle stops.

SITUATION

Due to a process deviation during production, the surface coating of the rocker arms may wear prematurely. Over time, increased wear on the rocker arms may also result in premature wear of the camshafts.

Letters will be sent to customers affected by this Service Action.

For vehicles that have not yet been delivered, the service campaign must be carried out before delivery to customers.

Only a small number of vehicles produced prior to May 5, 2021 are affected by this Service Action.

PROCEDURE

The production batch of all installed rocker arms must be checked. If necessary, all rocker arms, or all rocker arms and camshafts, must be replaced.

STEP 1: Disassembly

Perform the following work, following the Repair Instructions:

- Repair Instruction "11 34 001 – Check valve clearance" - Perform all preliminary work up to work step "Set engine to firing TDC"
- Repair Instruction "11 34 504 – Adjust valve clearance (cylinder head cover removed)" - Perform work steps "Remove camshaft bearing caps" and "Remove camshafts"

STEP 2: Inspection

- Check for production batch E0611A or E0611B and for wear on all rocker arms, as shown in Figures 1 and 2, and plan out the next steps of action depending on what is found:

Figure 1: Worn rocker arm, shown with production batch number:

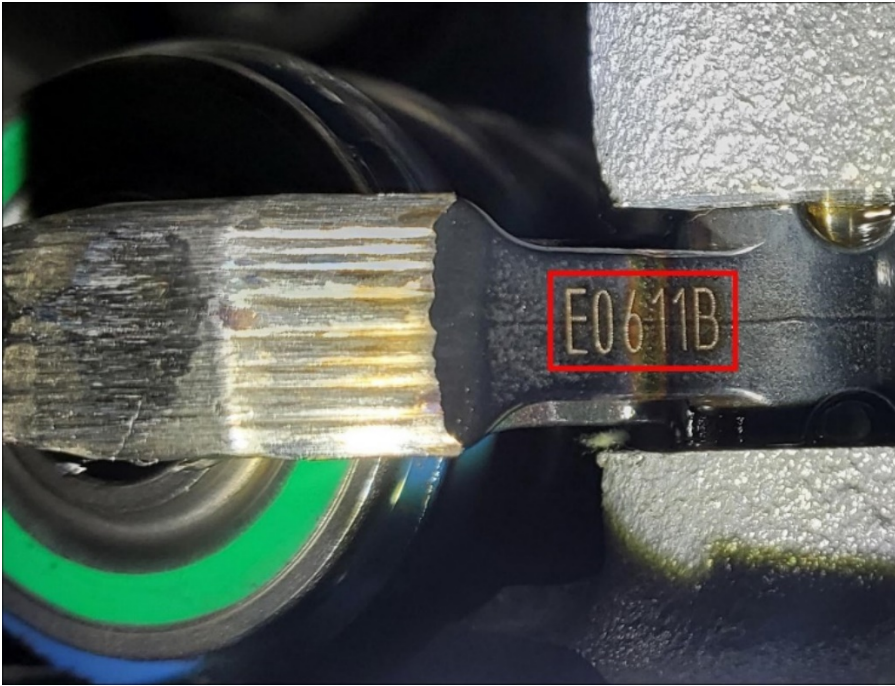
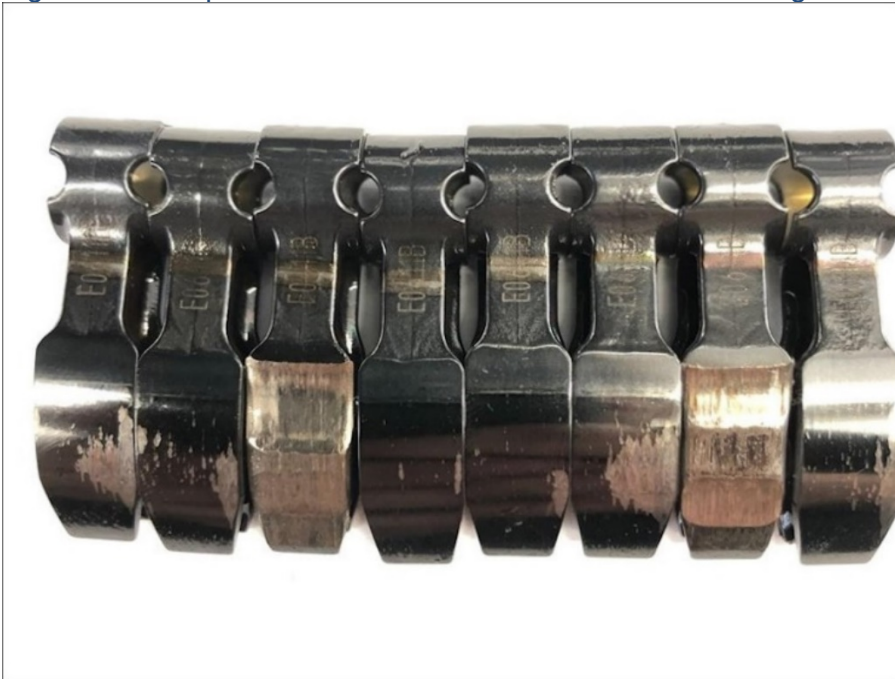


Figure 2: Examples of rocker arms with worn surface coating:



STEP 3 – Find the below solution applicable to the vehicle in question and follow the instructions in that section:

Solution A: If no problem is found:

- If **none** of the rocker arms have production batch E0611A or E0611B stamped, proceed with re-assembly as follows:
 - Perform work steps "Install camshafts" and "Install camshaft bearing caps" according to Repair Instruction "11 34 001 – Adjust valve clearance.
 - Perform all follow-up work according to Repair Instruction "11 34 504 – Adjust valve clearance (cylinder head cover removed)".

- Notice: Please use a new set of O-rings for shaft coils, part number below.

Solution B: If the batch numbers match but NO WEAR is found:

When at least one rocker arm with production batch E0611A or E0611B is found, but no wear is visible, **all rocker arms must be replaced.**

- Replace all rocker arms or all rocker arms and camshafts according to Repair Instructions "11 12 116 – Remove/install cylinder head or replace cylinder head gasket" and "11 33 552 – Replace all rocker arms (cylinder head removed)".
- Refer to the part numbers and warranty information below.

Solution C: If the batch numbers match AND wear is found:

When at least one rocker arm with production batch E0611A or E0611B is found and black surface coating shows wear on at least one of these rocker arms, **all rocker arms and both camshafts must be replaced.**

- Replace all rocker arms or all rocker arms and camshafts according to Repair Instructions "11 12 116 – Remove/install cylinder head or replace cylinder head gasket" and "11 33 552 – Replace all rocker arms (cylinder head removed)".
- Refer to the part numbers and warranty information below.

PARTS INFORMATION

Obtain and confirm the part numbers for your specific vehicle by entering the chassis number in ETK which takes into account specific equipment and/or options.

Additional parts like gaskets, hardware and chemicals may be required for the complete repair.

Part Numbers – Solution A – Check Rocker Arms, No Replacement Necessary

11 12 7 726 964	4× Set, O-ring for shaft coil
-----------------	-------------------------------

Part Numbers – Solution B – Check and Replace Rocker Arms

11 12 7 726 964	4× Set, O-ring for shaft coil
11 33 8 389 397	16× Rocker arm
11 34 - - - -	(As needed) Adjusting platelet
07 11 9 963 252	2× Sealing ring
07 11 9 963 340	Sealing ring A20×24-AL
18 51 8 542 088	4× Exhaust manifold seal
07 12 9 907 379	Cheese head screw

Part Numbers – Solution C – Check and Replace Rocker Arms and Camshafts

11 12 7 726 964	4× Set, O-ring for shaft coil
11 33 8 389 397	16× Rocker arm
11 31 8 404 107	Intake camshaft
11 31 8 404 109	Exhaust camshaft
11 34 - - - -	(As needed) Adjusting platelet
07 11 9 963 252	2× Sealing ring
07 11 9 963 340	Sealing ring A20×24-AL
18 51 8 542 088	4× Exhaust manifold seal
07 12 9 907 379	Cheese head screw

Any required oil/coolant can be entered on the warranty claim under a Sublet 04.

BMW Motorrad recommends BMW Motorrad ADVANTEC Ultimate motor oil.

WARRANTY INFORMATION

Covered under the terms of the BMW New Vehicle Limited Warranty for Motorcycles, if applicable.

Defect code

00 11 49 00 00	Check rocker arms and replace where needed
----------------	--

Labor Operation – **Solution A** – Check Rocker Arms, No Replacement Necessary

00 60 394	Checking rocker arms	29 FRU (K63) 36 FRU (K69)
+00 60 894	Checking rocker arms	28 FRU (K63) 35 FRU (K69)

Labor operation code 00 60 394 is a Main labor operation. If you are using a Main labor code for another repair, use the Plus code labor operation instead.

Labor Operation – **Solution B** – Check and Replace Rocker Arms

00 60 395	Checking and renewing rocker arms	63 FRU (K63) 69 FRU (K69)
+00 60 895	Checking and renewing rocker arms	62 FRU (K63) 68 FRU (K69)

Labor operation code 00 60 395 is a Main labor operation. If you are using a Main labor code for another repair, use the Plus code labor operation instead.

Labor Operation – **Solution C** – Check and Replace Rocker Arms and Camshafts

00 60 396	Checking rocker arms, changing rocker arms and camshafts	63 FRU (K63) 69 FRU (K69)
+00 60 896	Checking rocker arms, changing rocker arms and camshafts	62 FRU (K63) 68 FRU (K69)

Labor operation code 00 60 396 is a Main labor operation. If you are using a Main labor code for another repair, use the Plus code labor operation instead.

NOTICE: Affected vehicles could be retrieved from customers by claiming the Labor Operation below:

Labor Operation – Vehicle Retrieval from Customer

00 98 510	Vehicle Retrieval from Customer	7 FRU
-----------	---------------------------------	-------

FRUs include all repair procedures to complete the task with allowance for necessary ancillary tasks (e.g., visual inspection, lubrication, cleaning parts etc.) and administrative tasks.

QUESTIONS REGARDING THIS BULLETIN

Technical inquiries	Contact the BMW Technical Support Group via TSARA
Warranty inquiries	Submit an IDS ticket to the Warranty Department

Copyright ©2021 MOTORRAD USA, a division of BMW of North America, LLC. All Rights Reserved

Parts inquiries

Submit an IDS ticket to the Motorrad Parts Department

Supporting Materials

[picture_as_pdf 11 14 21 CHECK ROCKER ARMS AND REPLACE WHERE NEEDED.pdf](#)

Service Information Bulletin

Engine

November 17, 2021

11 14 21

SERVICE ACTION: CHECK ROCKER ARMS AND REPLACE WHERE NEEDED



**BMW
MOTORRAD**

MODEL

Model	Model Description
K63	S 1000 R
K69	S 1000 XR

The affected vehicles have been marked with campaign number **0011490000** in AIR.

In order to determine if a specific vehicle is affected by this campaign, it will be necessary to verify the vehicle VIN in AIR (Aftersales Information Research). Based on the response of the system, either proceed with the repair or take no further action. Please note, open campaigns or vehicle stops may not appear in DCS Warranty Vehicle Inquiry or sales systems until 24-72 hours after they are announced, therefore AIR is always the recommended method for determining open campaigns and vehicle stops.

SITUATION

Due to a process deviation during production, the surface coating of the rocker arms may wear prematurely. Over time, increased wear on the rocker arms may also result in premature wear of the camshafts.

Letters will be sent to customers affected by this Service Action.

For vehicles that have not yet been delivered, the service campaign must be carried out before delivery to customers.

Only a small number of vehicles produced prior to May 5, 2021 are affected by this Service Action.

PROCEDURE

The production batch of all installed rocker arms must be checked. If necessary, all rocker arms, or all rocker arms and camshafts, must be replaced.

STEP 1: Disassembly

Perform the following work, following the Repair Instructions:

- Repair Instruction "11 34 001 – Check valve clearance" - Perform all preliminary work up to work step "Set engine to firing TDC"
- Repair Instruction "11 34 504 – Adjust valve clearance (cylinder head cover removed)" - Perform work steps "Remove camshaft bearing caps" and "Remove camshafts"

STEP 2: Inspection

- Check for production batch E0611A or E0611B and for wear on all rocker arms, as shown in Figures 1 and 2, and plan out the next steps of action depending on what is found:

Figure 1: Worn rocker arm, shown with production batch number:

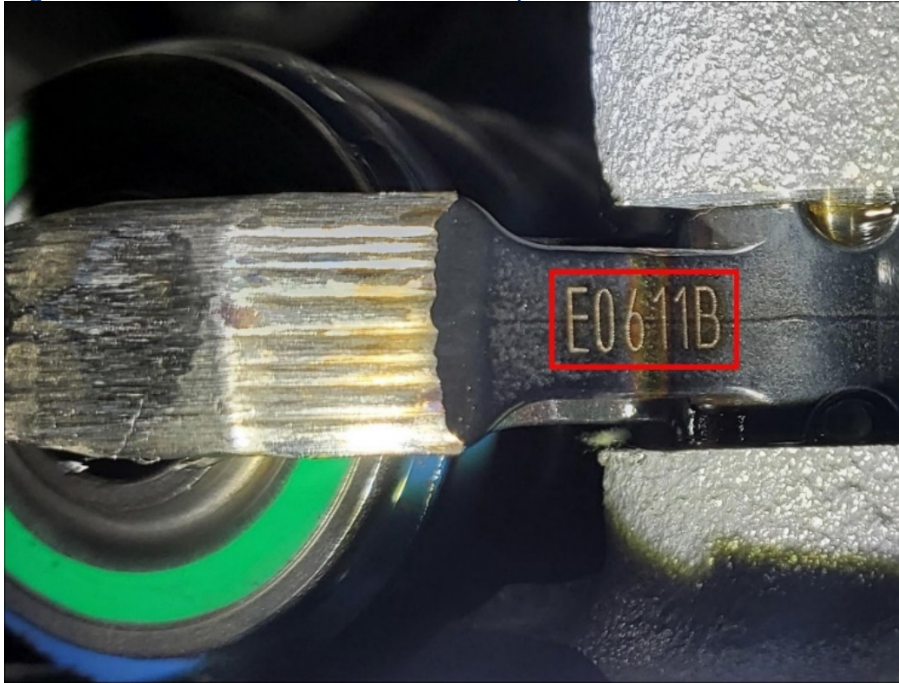


Figure 2: Examples of rocker arms with worn surface coating:



STEP 3 – Find the below solution applicable to the vehicle in question and follow the instructions in that section:

Solution A: If no problem is found:

- If **none** of the rocker arms have production batch E0611A or E0611B stamped, proceed with re-assembly as follows:
 - Perform work steps "Install camshafts" and "Install camshaft bearing caps" according to Repair Instruction "11 34 001 – Adjust valve clearance."
 - Perform all follow-up work according to Repair Instruction "11 34 504 – Adjust valve clearance (cylinder head cover removed)".
 - Notice: Please use a new set of O-rings for shaft coils, part number below.

Solution B: If the batch numbers match but NO WEAR is found:

When at least one rocker arm with production batch E0611A or E0611B is found, but no wear is visible, **all rocker arms must be replaced.**

- Replace all rocker arms or all rocker arms and camshafts according to Repair Instructions "11 12 116 – Remove/install cylinder head or replace cylinder head gasket" and "11 33 552 – Replace all rocker arms (cylinder head removed)".
- Refer to the part numbers and warranty information below.

Solution C: If the batch numbers match AND wear is found:

When at least one rocker arm with production batch E0611A or E0611B is found and black surface coating shows wear on at least one of these rocker arms, **all rocker arms and both camshafts must be replaced.**

- Replace all rocker arms or all rocker arms and camshafts according to Repair Instructions "11 12 116 – Remove/install cylinder head or replace cylinder head gasket" and "11 33 552 – Replace all rocker arms (cylinder head removed)".
- Refer to the part numbers and warranty information below.

PARTS INFORMATION

Obtain and confirm the part numbers for your specific vehicle by entering the chassis number in ETK which takes into account specific equipment and/or options.

Additional parts like gaskets, hardware and chemicals may be required for the complete repair.

Part Numbers – Solution A – Check Rocker Arms, No Replacement Necessary

11 12 7 726 964	4× Set, O-ring for shaft coil
-----------------	-------------------------------

Part Numbers – Solution B – Check and Replace Rocker Arms

11 12 7 726 964	4× Set, O-ring for shaft coil
11 33 8 389 397	16× Rocker arm
11 34 - - - - -	(As needed) Adjusting platelet
07 11 9 963 252	2× Sealing ring
07 11 9 963 340	Sealing ring A20×24-AL
18 51 8 542 088	4× Exhaust manifold seal
07 12 9 907 379	Cheese head screw

Part Numbers – Solution C – Check and Replace Rocker Arms and Camshafts

11 12 7 726 964	4× Set, O-ring for shaft coil
11 33 8 389 397	16× Rocker arm
11 31 8 404 107	Intake camshaft
11 31 8 404 109	Exhaust camshaft
11 34 - - - - -	(As needed) Adjusting platelet
07 11 9 963 252	2× Sealing ring
07 11 9 963 340	Sealing ring A20×24-AL
18 51 8 542 088	4× Exhaust manifold seal
07 12 9 907 379	Cheese head screw

Any required oil/coolant can be entered on the warranty claim under a Sublet 04.

BMW Motorrad recommends BMW Motorrad ADVANTEC Ultimate motor oil.

WARRANTY INFORMATION

Covered under the terms of the BMW New Vehicle Limited Warranty for Motorcycles, if applicable.

Defect code

00 11 49 00 00	Check rocker arms and replace where needed
----------------	--

Labor Operation – **Solution A** – Check Rocker Arms, No Replacement Necessary

00 60 394	Checking rocker arms	29 FRU (K63) 36 FRU (K69)
+00 60 894	Checking rocker arms	28 FRU (K63) 35 FRU (K69)

Labor operation code 00 60 394 is a Main labor operation. If you are using a Main labor code for another repair, use the Plus code labor operation instead.

Labor Operation – **Solution B** – Check and Replace Rocker Arms

00 60 395	Checking and renewing rocker arms	63 FRU (K63) 69 FRU (K69)
+00 60 895	Checking and renewing rocker arms	62 FRU (K63) 68 FRU (K69)

Labor operation code 00 60 395 is a Main labor operation. If you are using a Main labor code for another repair, use the Plus code labor operation instead.

Labor Operation – **Solution C** – Check and Replace Rocker Arms and Camshafts

00 60 396	Checking rocker arms, changing rocker arms and camshafts	63 FRU (K63) 69 FRU (K69)
+00 60 896	Checking rocker arms, changing rocker arms and camshafts	62 FRU (K63) 68 FRU (K69)

Labor operation code 00 60 396 is a Main labor operation. If you are using a Main labor code for another repair, use the Plus code labor operation instead.

NOTICE: Affected vehicles could be retrieved from customers by claiming the Labor Operation below:

Labor Operation – Vehicle Retrieval from Customer

00 98 510	Vehicle Retrieval from Customer	7 FRU
-----------	---------------------------------	-------

FRUs include all repair procedures to complete the task with allowance for necessary ancillary tasks (e.g., visual inspection, lubrication, cleaning parts etc.) and administrative tasks.

QUESTIONS REGARDING THIS BULLETIN

Technical inquiries	Contact the BMW Technical Support Group via TSARA
Warranty inquiries	Submit an IDS ticket to the Warranty Department
Parts inquiries	Submit an IDS ticket to the Motorrad Parts Department