

2022 LS 500, LS 500h Pre-Delivery Service (PDS)

Service Category General

Section Pre-Delivery Service

Market USA

Toyota Supports
ASE Certification 

Applicability

YEAR(S)	MODEL(S)	ADDITIONAL INFORMATION
2022	LS500, LS500H	

Introduction

This bulletin contains the vehicle specific pre-delivery services for 2022 model year LS 500 and LS 500h vehicles. Additionally, refer to the applicable Pre-Delivery Service (PDS) Check Sheet for services to be performed.

Warranty Information

OP CODE	DESCRIPTION	TIME	OFF	T1	T2
N/A	Not Applicable to Warranty	–	–	–	–

Procedures

- [D/C Cut Fuse Installation](#)2
- [Deletion of Vehicle Alert History](#)6
- [Seating Position Control ECU Initialization](#).....6
- [Rear Door Sunshade Initialization*](#)7
- [Tire Pressure Warning System \(TPWS\) Initialization](#).....7
- [Memorize Steering Angle Neutral Point](#)..... 7
- [Parking Support Brake System Calibration](#)7
- [Front and Rear Emergency Towing Eyelet Removal and Hole Cover Installation](#).....8
- [Front Wheel Opening Extension Pad Installation](#)10
- [Front License Plate and Mounting Bracket Installation*](#)11
- [Installation of Rubber Body Plugs*](#)13

*If Applicable

2022 LS 500, LS 500h Pre-Delivery Service (PDS)

D/C Cut Fuse Installation

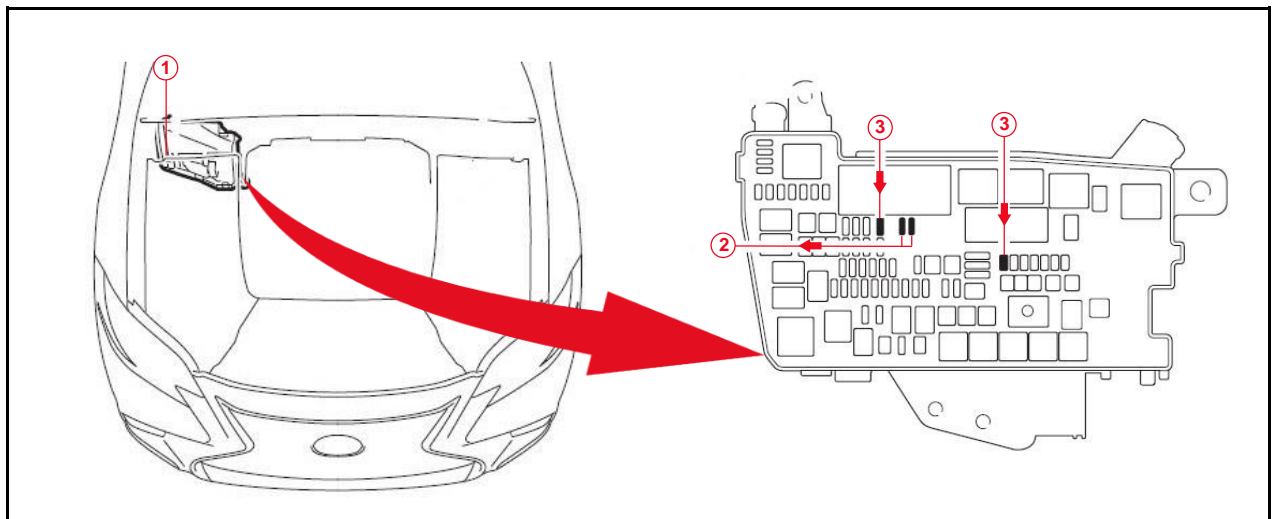
To minimize battery discharge during transportation and storage, the D/C cut fuses (30A) have been removed at the assembly plant and temporarily stored in the blank spaces of the relay block in the engine compartment.

During PDS, remove the D/C cut fuses (30A) from the blank spaces of the relay block in the engine compartment and install them in the locations shown.

With the ignition switch OFF, install the D/C cut fuses (30A) into their original locations in the engine compartment relay block.

Vehicles Without Active Stabilizer (Non-F Sport Models)

Figure 1.



1	Relay Block
2	Remove D/C Cut Fuses (30A)

3	Install D/C Cut Fuses (30A) (Original Location)
----------	--

NOTE

- While the vehicle is stored at the dealership, disconnect the negative (-) battery terminal to prevent battery discharge. Refer to [L-SB-0013-21](#), *Battery Maintenance During PDS*.
- If the D/C cut fuses (30A) are installed with the ignition switch in the IG-ON position, Diagnostic Trouble Codes (DTCs) will be detected. Clear the DTCs.

2022 LS 500, LS 500h Pre-Delivery Service (PDS)

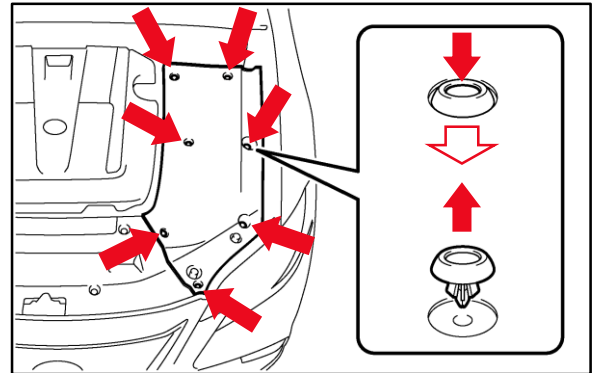
D/C Cut Fuse Installation (continued)

Vehicles With Active Stabilizer System (F Sport Models)

1. Push the core of the engine compartment side cover clips and remove them.

2. Remove the engine compartment side cover (upper radiator support seal).

Figure 2.



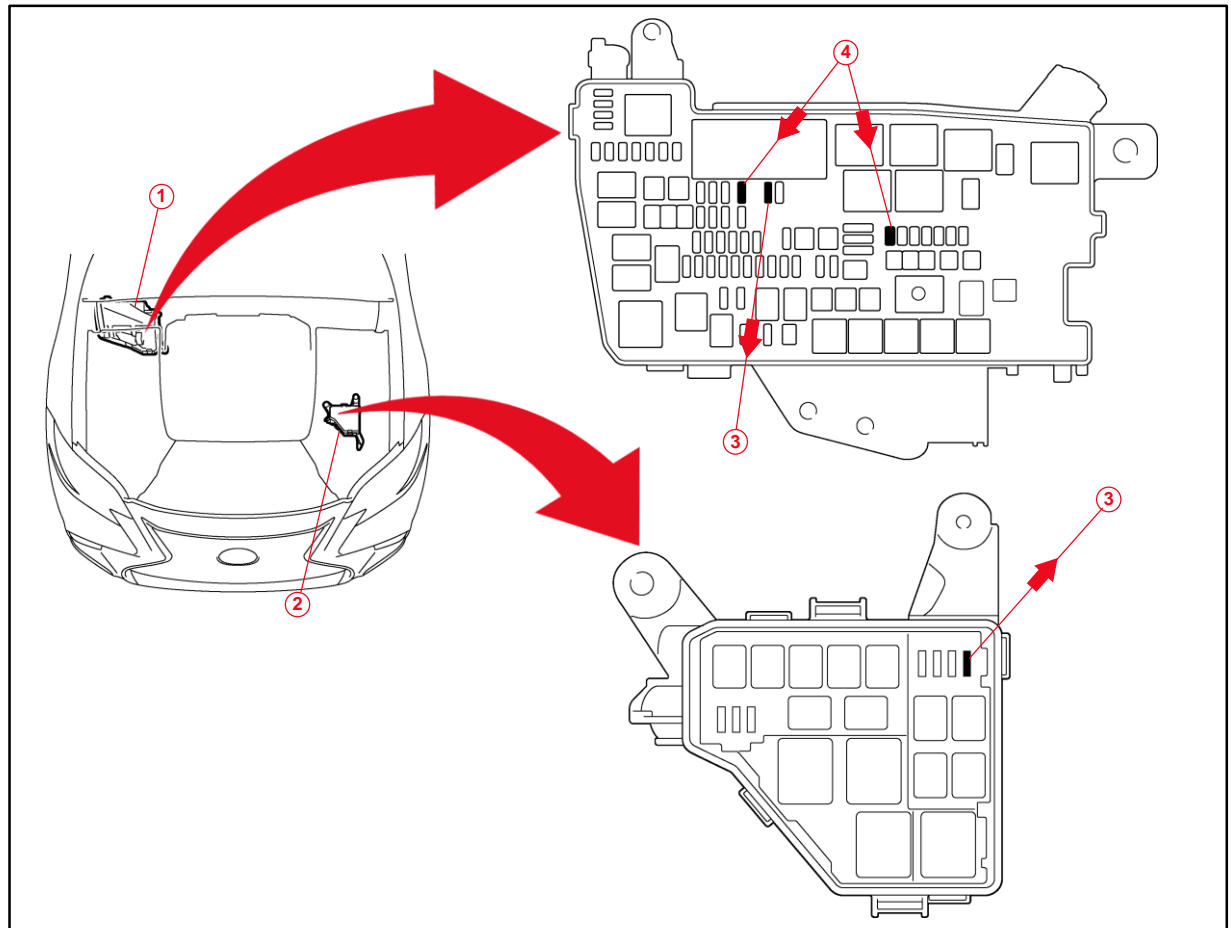
2022 LS 500, LS 500h Pre-Delivery Service (PDS)

D/C Cut Fuse Installation (continued)

Vehicles With Active Stabilizer System (F Sport Models) (continued)

- With the ignition switch OFF, install the D/C cut fuses (30A) into their original locations in the engine compartment relay block.

Figure 3. Vehicles With Active Stabilizer Suspension System (F Sport)



1	Main Relay Block
2	Sub Relay Block

3	Remove D/C Cut Fuses (30A)
4	Install D/C Cut Fuses (30A) (Original Location)

NOTE

- While the vehicle is stored at the dealership, disconnect the negative (-) battery terminal to prevent battery discharge. Refer to [L-SB-0013-21](#), *Battery Maintenance During PDS*.
- If the D/C cut fuses (30A) are installed with the ignition switch in the IG-ON position, DTCs will be detected. Clear the DTCs.

2022 LS 500, LS 500h Pre-Delivery Service (PDS)

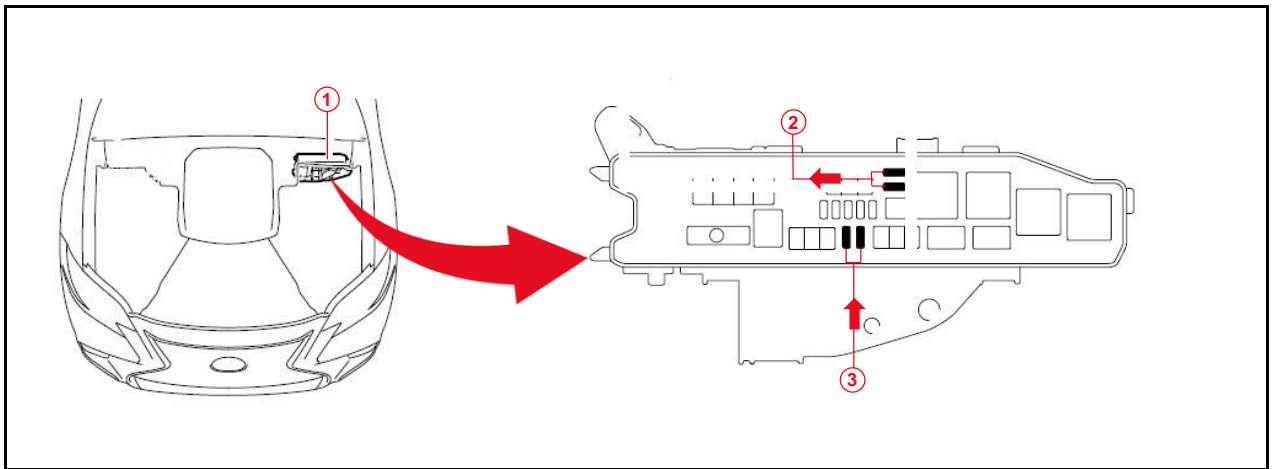
D/C Cut Fuse Installation (continued)

Vehicles With Active Stabilizer System (F Sport Models) (continued)

4. Reinstall the engine compartment side cover (upper radiator support seal).
5. Confirm the master warning light is OFF and there are no warning messages on the multi-informational display.

Hybrid Vehicles

Figure 4.



1	Relay Block
2	Remove D/C Cut Fuse (30A)

3	Install D/C Cut Fuse (30A) (Original Location)
----------	---

NOTE

- While the vehicle is stored at the dealership, disconnect the negative (–) battery terminal to prevent battery discharge. Refer to [L-SB-0013-21](#), *Battery Maintenance During PDS*.
- If the D/C cut fuses (30A) are installed with the ignition switch in the IG-ON position, Diagnostic Trouble Codes (DTCs) will be detected. Clear the DTCs.

2022 LS 500, LS 500h Pre-Delivery Service (PDS)

Deletion of Vehicle Alert History

As the D/C cut fuse is removed, the communication between the various ECUs is interrupted. When the D/C fuse is reinstalled, the communication status is restored, but Lexus Enform Service Connect may store malfunction history in the form of vehicle alert history. Therefore, it is necessary to operate the multi-display and delete the vehicle alert history AFTER installing the D/C cut fuse during PDS at the dealership.

Deletion Procedure

1. Turn the engine switch (power switch) to the ON position (ON mode).
2. Push the Menu switch on the remote touch device.
3. On the multi-display, enter the following menus: *Info – Vehicle Alert History*.
4. If there is vehicle alert history stored, perform the Delete History operation.

HINT

If there is no vehicle alert history stored, the system will display a message stating "There is no vehicle alert history."

5. When the vehicle alert history deletion confirmation screen is displayed, select Yes.

HINT

If there is no vehicle alert history stored, the system will display a message stating "There is no vehicle alert history."

6. Turn the engine switch (power switch) to the OFF position (OFF mode).

Seating Position Control ECU Initialization

Refer to the applicable Repair Manual for the seating position control ECU [initialization procedure](#) (procedure 3).

2022 LS 500, LS 500h Pre-Delivery Service (PDS)

Rear Door Sunshade Initialization

Initialize the rear door sunshade after installing the D/C cut fuses during PDS.

Refer to the applicable Repair Manual for the rear door sunshade [initialization procedure](#).

Tire Pressure Warning System (TPWS) Initialization

Refer to the applicable Repair Manual for the TPWS [initialization procedure](#). Note the spare tire does NOT have a TPWS sensor.

NOTE

To adjust the tire pressure correctly when the outside temperature is significantly colder than shop temperature, perform a Health Check using Techstream and select the compensation tire pressure checkbox. Compensation pressures will display on the Health Check results screen. Adjust the tire pressure when the tires are cold.

Memorize Steering Angle Neutral Point

As a result of the removal of the D/C cut fuse, the power source to the steering angle sensor is cut off. When the D/C cut fuse is reinstalled, the parking assist monitor system will be operative, but it cannot display guidelines to assist parking operation because the center position recognized by the steering angle sensor may not be in an initial position. Therefore, perform steering angle neutral point initialization AFTER installing the D/C cut fuse during PDS.

Refer to the applicable Repair Manual for the steering angle neutral point [initialization procedure](#).

Parking Support Brake System Calibration

As a result of the removal of the D/C cut fuse, the steering angle sensor power source is cut off. When the D/C cut fuse is reinstalled, the center position recognized by the steering angle sensor may not be the appropriate position. Therefore, it is necessary to perform parking support brake system calibration AFTER installing the D/C cut fuse during PDS.

Refer to the applicable Repair Manual for the parking support brake system calibration procedure:

- [Driving Method](#).
- [Techstream Method](#) (procedure 4).

2022 LS 500, LS 500h Pre-Delivery Service (PDS)

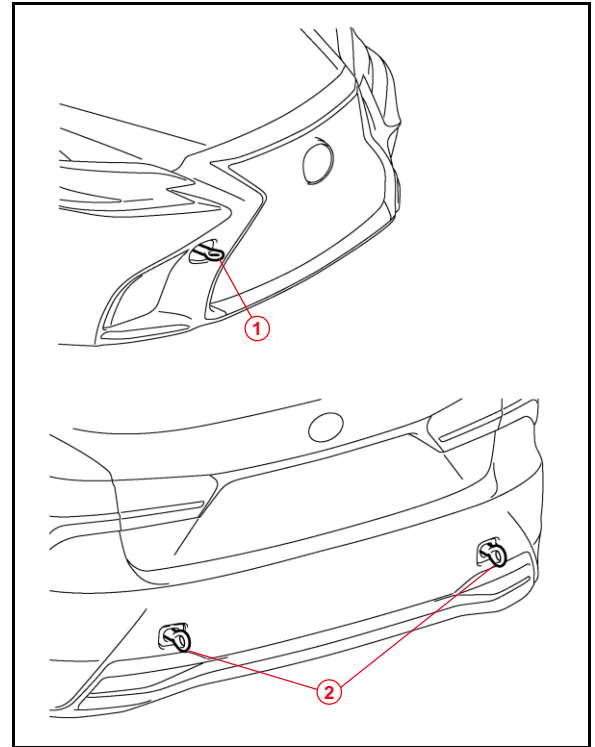
Front and Rear Emergency Towing Eyelet Removal and Hole Cover Installation

1. Remove the front and rear emergency towing eyelets from the front and rear bumpers by turning them counterclockwise.

HINT

If it is difficult to loosen the front emergency towing eyelet, use a steel bar.

Figure 5.



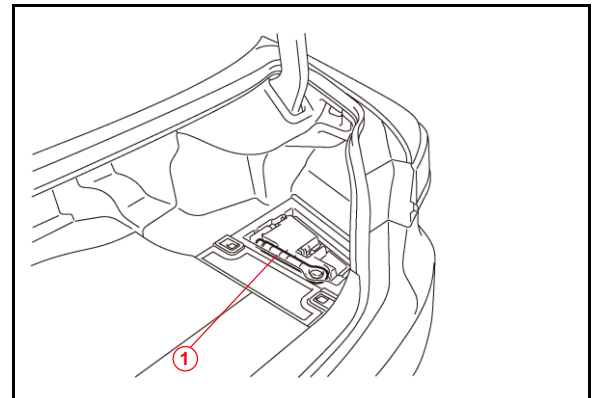
1	Front Emergency Towing Eyelet
2	Rear Emergency Towing Eyelet

2. Place one of the removed emergency towing eyelets into the luggage tray in the luggage compartment.

HINT

Dispose of the other removed emergency towing eyelets.

Figure 6.



1	Emergency Towing Eyelet
----------	--------------------------------

2022 LS 500, LS 500h Pre-Delivery Service (PDS)

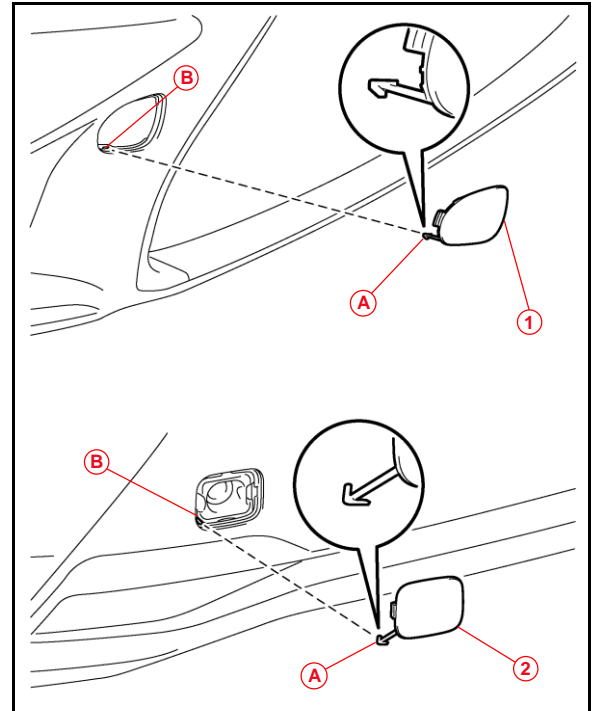
Front and Rear Emergency Towing Eyelet Removal and Hole Cover Installation (continued)

3. Install the front and rear emergency towing eyelet hole covers, which are stored in the glove compartment, onto the front and rear bumpers.
 - A. Insert the arrow-shaped part of the emergency towing eyelet hole cover "A" into the eyelet hole "B" as shown.
 - B. Install the emergency towing eyelet hole cover to the hole of the bumper.

HINT

Make sure the front emergency eyelet towing cover is installed in front, and the rear emergency eyelet towing cover is installed in the rear.

Figure 7.



A	Arrow-shaped Part
B	Eyelet Hole
1	Front Emergency Towing Eyelet Hole Cover
2	Rear Emergency Towing Eyelet Hole Cover

2022 LS 500, LS 500h Pre-Delivery Service (PDS)

Front Wheel Opening Extension Pad Installation

The front wheel opening extension pad set (right and left front wheel opening extension pads and two self-tapping screws) is stored in the luggage compartment at the assembly plant to avoid damage in transit.

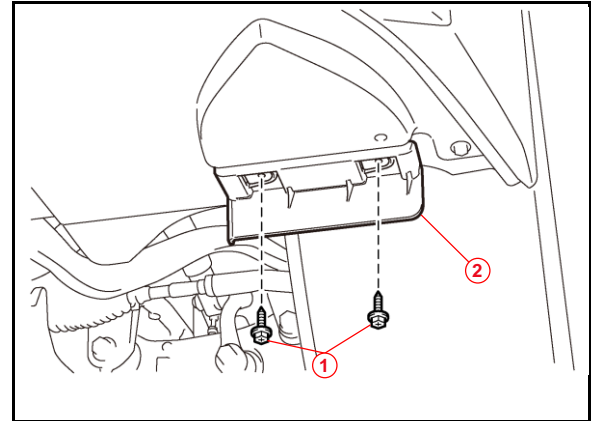
- Using the distinguishable mark on the pad, hook the retainers of the front left wheel opening extension pad through the installation holes on the fender liner and temporarily fix it to the installation position.

NOTE

There is a distinguishable mark on each pad indicating the left and right-side pads.

- Tighten the two self-tapping screws.
- Repeat steps 1 and 2 to install the right front wheel opening extension pad.

Figure 8.



1	Self-tapping Screw
2	Front Wheel Opening Extension Pad

2022 LS 500, LS 500h Pre-Delivery Service (PDS)

Front License Plate and Mounting Bracket Installation

The front license plate mounting bracket and two self-tapping screws are stored in the luggage compartment of the vehicle at the assembly plant. For states that require a front license plate, install the bracket and bolts on the bumper cover during PDS according to the following procedure.

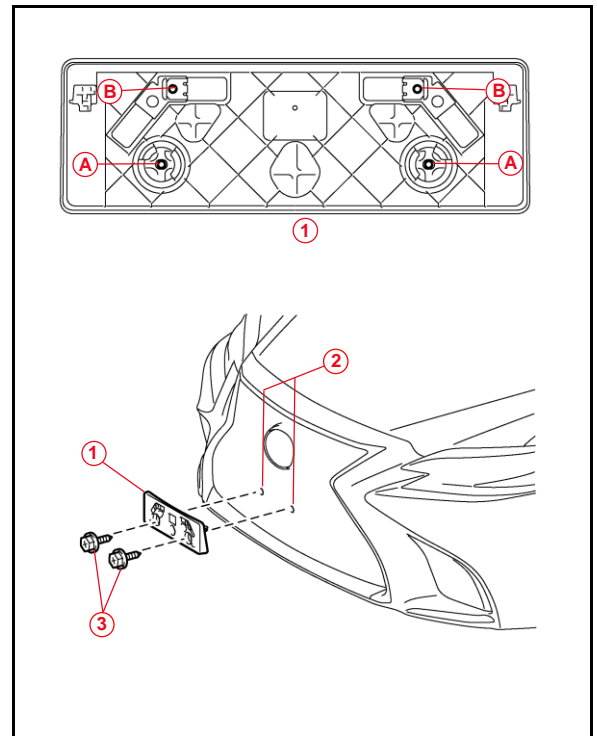
1. Align holes A of the mounting bracket with the lower set of dimples on the front bumper cover.

NOTE

- There are two sets of dimples on the front bumper cover. Use the lower set of dimples.
- Holes A are used to install the mounting bracket onto the radiator grille.
- Holes B are used to install the front license plate onto the mounting bracket.

2. Install the mounting bracket onto the front bumper cover at holes A using the two self-tapping screws.

Figure 9.



1	Mounting Bracket
2	Lower Dimple
3	Self-tapping Screw

2022 LS 500, LS 500h Pre-Delivery Service (PDS)

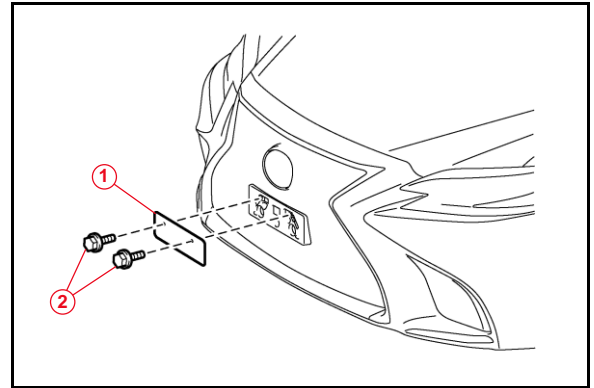
Front License Plate and Mounting Bracket Installation (continued)

3. Install the front license plate onto the mounting bracket at holes B using two noncorroding bolts with the following dimensions:

Nominal Length: 15.0 mm (0.59 in.)

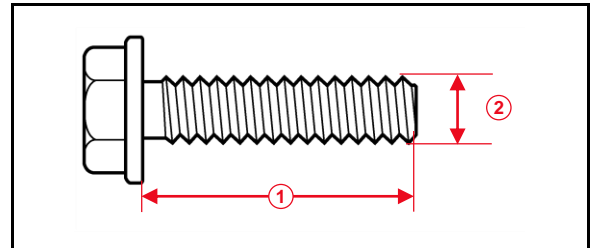
Diameter: 6.0 mm (0.24 in.)

Figure 10.



1	Front License Plate
2	Bolt

Figure 11.



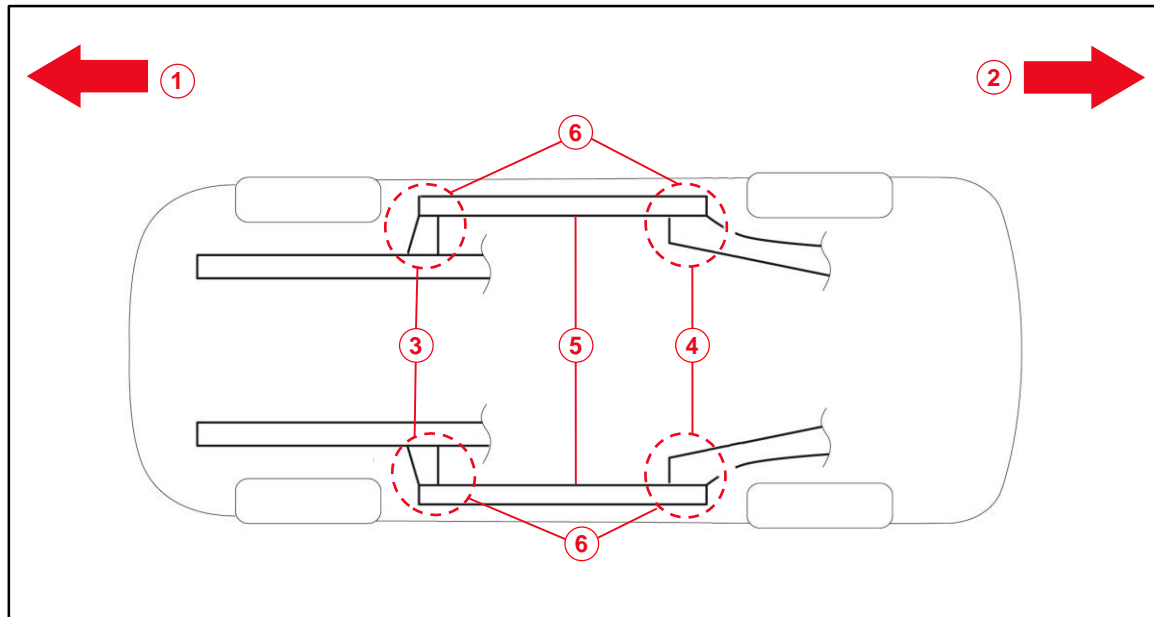
1	Nominal Length
2	Diameter

2022 LS 500, LS 500h Pre-Delivery Service (PDS)

Installation of Rubber Body Plugs

1. Confirm the number of plugs in the glove box. If two plugs are present, perform substep 2A ONLY. If four plugs are present, perform substep 2A AND substep 2B.
2. Install plugs according to the instructions below by confirming the number of plugs in the glove box.
 - A. Install two plugs in the rear side member hole or rocker inner hole as shown.
 - B. Install two plugs in the torque box hole or rocker inner hole as shown.

Figure 12.



1	Front Side
2	Rear Side
3	Torque Box Hole or Rocker Inner Hole
4	Rear Side Member Hole or Rocker Inner Hole
5	Rocker Inner
6	Install Plug Here (if Applicable)

NOTICE

- The installation of these plugs is required to prevent rust.
- These plugs are stored in the glove box.
- The number of plugs may vary according to production locations in the same vehicle model.