



## Service Bulletin 591 Issue 1 - 10.2021

Subject: Exhaust Butterfly Valve Cover Mounting Bracket				
Bulletin Number	Models Affected	VIN Range		Markets Affected
591	Speed Triple 1200 RS	From AD2117	To AU6999	All

### Background Information

Dealers are requested to install a replacement exhaust butterfly valve cover mounting bracket as described in the procedure below.

### Customer Contact Instructions

Motorcycles in the affected VIN range must be modified prior to delivery to the customer, or at the next visit to the dealership.

### Identification of Affected Motorcycles

Speed Triple 1200 RS motorcycles in the above VIN range.

### Note:

- Some affected motorcycles listed in the VIN range will have been modified and repaired by Triumph prior to their release from the factory.
- Unmodified motorcycles can be identified by checking the 'VIN Enquiry' on [www.triumphonline.net](http://www.triumphonline.net).

### Warranty Claim Instructions

Bulletin Number	Model	Fault Code	Repair Code	Description	Repair Time Allowance
591	Speed Triple 1200 RS	012496991	99591	Fit an exhaust butterfly valve cover mounting bracket	0.35 Hrs

### Genuine Parts Information

Bulletin Number	Part Number	Description	Quantity
591	T2206664	Bracket, EXBV cover, bolt on	1

## Parts Ordering Instructions

**For Triumph Subsidiary and Overseas Distributor dealers using Triumph Warranty On-Line with Parts Auto Ordering Flag switched on:** Order all repair parts by submitting a New Prior through the Warranty On-Line system. Entering the above repair code in a New Prior will automatically add the parts required and labour times for this Service Bulletin.

**For Overseas Distributor dealers NOT using Triumph Warranty On-Line or for Overseas Distributor dealers using Triumph Warranty On-Line with Parts Auto Ordering Flag switched off:** Orders should be placed using the normal parts ordering procedure.

## Genuine Parts Return Instructions

Not applicable

## Exhaust Butterfly Valve Cover Mounting Bracket - Installation

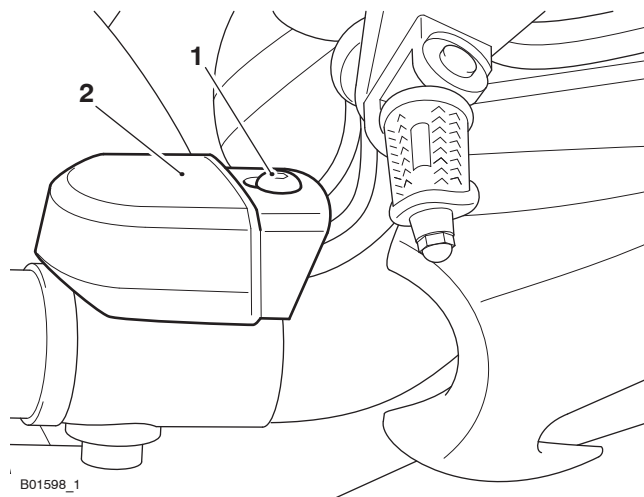
### ! Warning

Make sure the motorcycle is stabilised and adequately supported.  
Do not support the motorcycle on any ancillary component, the exhaust system or any other non structural parts of the motorcycle frame.  
A correctly supported motorcycle will help prevent it from falling.  
An unstable motorcycle may fall, causing injury to the operator or damage to the motorcycle.

### ! Warning

If the engine has recently been running, the exhaust components may be hot to the touch. Contact with the hot components may cause damage to exposed skin. To avoid skin damage, always allow the hot parts to cool before working on the exhaust system.

1. Release the fixing and remove exhaust butterfly valve cover.



1. Fixing
2. Cover

### Note:

- Use a suitable protective tape such as masking tape around the area of the frame and exhaust system.

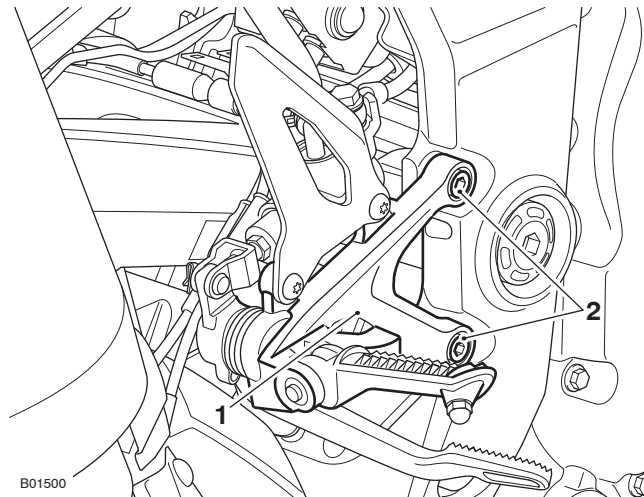
## Warning

Do not twist or bend the brake lines or hoses.

Twisting the brake lines or hoses may cause the brake hoses or lines to leak.

Twisted or kinked brake hoses or lines lead to reduced braking efficiency causing loss of motorcycle control and an accident.

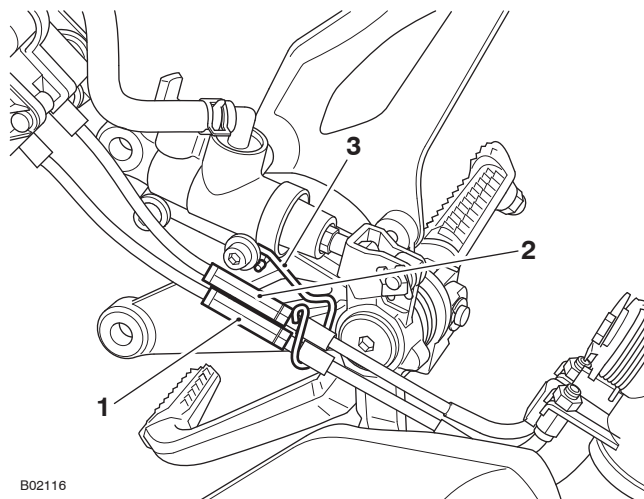
2. Remove the right hand control plate fixings.
3. Protect the frame and right hand control plate from damage by applying a suitable protective tape such as masking tape to the area of the frame.
4. Position the right hand control plate to gain access to the bracket and cables.



1. Control plate
2. Control plate fixings

### Note:

- Note the position of the exhaust butterfly valve cables for installation.
5. Noting their orientation for installation, release the exhaust butterfly valve cables from the wire guides.

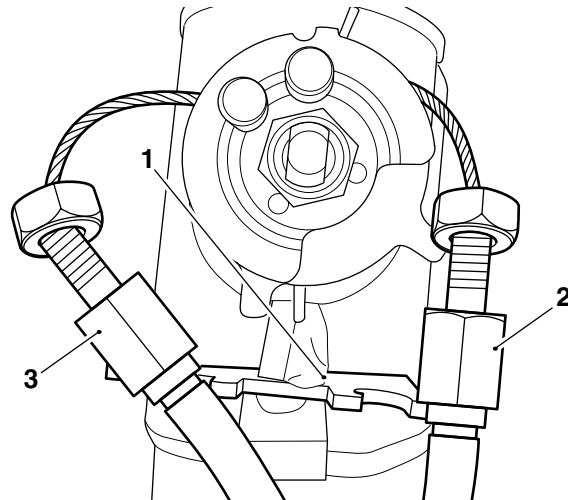


1. Cable (yellow lettering and black 90° bend for the actuator end)
2. Cable (white lettering and silver 90° bend for the actuator end)
3. Wire guides

### Note:

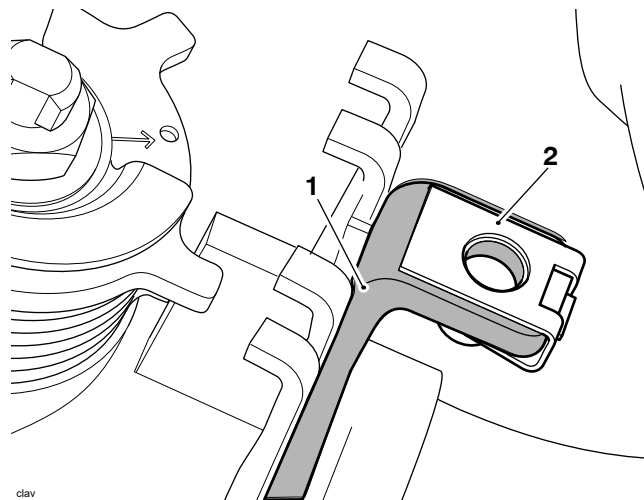
- The cable with the silver coloured 90° bend is attached to the outer side of the exhaust butterfly valve.
  - The cable with the black coloured 90° bend is attached to the inner side of the exhaust butterfly valve.
6. Loosen the lock nuts and detach the outer cables from the cable mounting plate.

- 
7. Align the inner cables with their slots and remove the cables from the exhaust butterfly valve.



- 1. Cable mounting plate
- 2. Cable (silver 90° bend)
- 3. Cable (black 90° bend)

8. Remove the captive nut from the welded exhaust butterfly valve cover mounting bracket and retain for reuse.



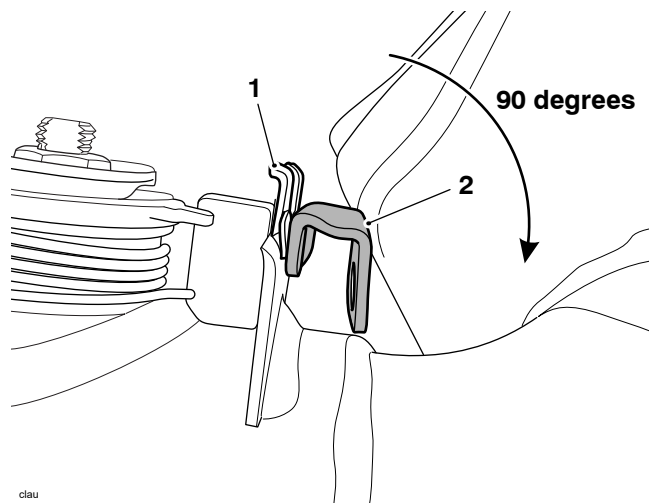
- 1. Welded exhaust butterfly valve cover mounting bracket
- 2. Captive nut

## ⚠ Caution

Do not bend or distort the cable mounting plate.  
Bending the cable mounting plate will restrict cable operation.  
Restricted cable operation will impair the exhaust butterfly valve's operation restricting the motorcycle's performance.

### Note:

- **The bracket may break off as it is being bent.**
  - **If this happens, remove any burrs or sharp edges as described in step 13 and continue from step 14.**
9. Using suitable tools, support the cable mounting plate and bend the welded exhaust butterfly valve cover mounting bracket forwards 90°.



1. Cable mounting plate
2. Welded exhaust butterfly valve cover mounting bracket

## ⚠ Warning

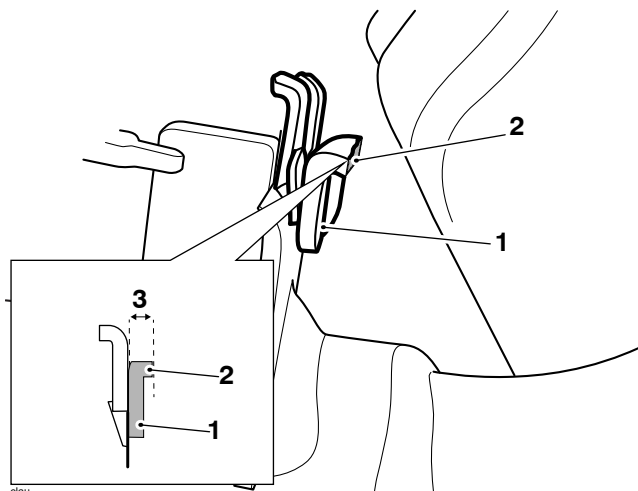
Hacksaws have sharp blades and during use create sharp edges.  
Hacksaws, if not used correctly may lead to cuts and abrasions to the skin.  
Failure to wear eye protection and appropriate personal protective equipment may lead to personal injury.

## ⚠ Caution

Using a suitable masking tape or similar, protect the immediate area around the components.  
Failure to protect the surrounding area may cause irreparable damage.  
Damage caused by not protecting the surrounding area is not covered by any Triumph Warranty.

10. Protect the frame and exhaust system from damage by applying masking tape to the area of the frame.
11. Using a suitable hacksaw, cut the bracket so that there is a maximum of 5 mm left remaining as shown.
12. Collect the sawn off part of the bracket and discard in an environmentally safe manner.

13. Using a suitable file, remove any burrs or sharp edges from the cut edge of the bracket.

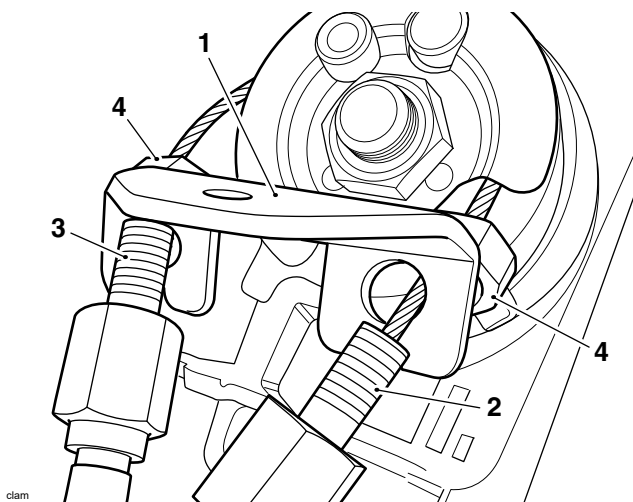


1. **Welded exhaust butterfly valve cover mounting bracket**
2. **Cut edge**
3. **Maximum length 5 mm**

14. Clean the sawn edge, the immediate area around the bracket, the exhaust system and rear tyre, removing any remaining swarf or residue.

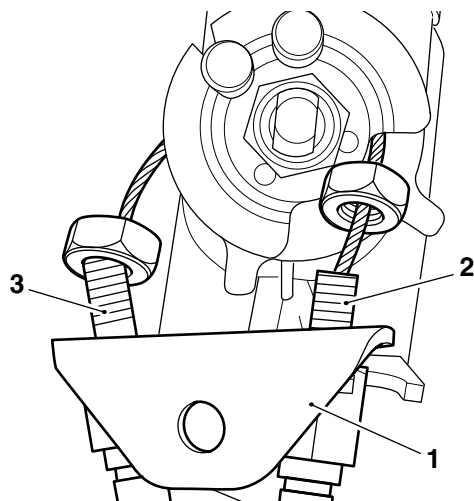
**Note:**

- **The exhaust butterfly valve bracket is stainless steel, additional corrosion protection is not required.**
15. Fit the inner cables to their slots on the exhaust butterfly valve as noted for removal.
  16. Fit the cable mounting bracket over the cables between the nut and the cable end with the folded top of the bracket facing away from the pulley.



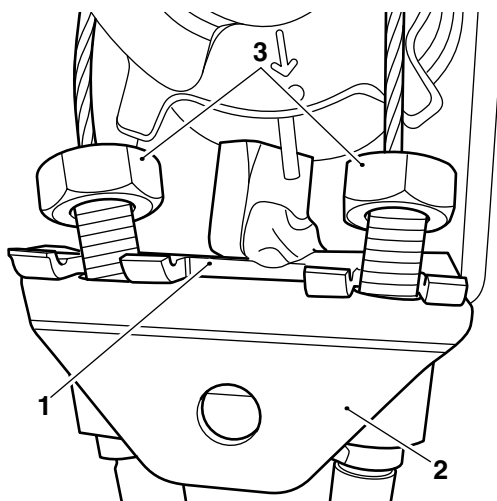
1. **Cover mounting bracket**
2. **Cable (silver 90° bend)**
3. **Cable (black 90° bend)**
4. **Nuts**

17. Insert the cable ends into the bracket, do not fit the nuts at this stage.



1. Cover mounting bracket
2. Cable (silver 90° bend)
3. Cable (black 90° bend)

18. Fit the cover mounting bracket onto the flat side of the cable mounting plate.
19. Slot the threaded outer cable ends onto the cable mounting plate and fit the nuts onto the threaded ends.

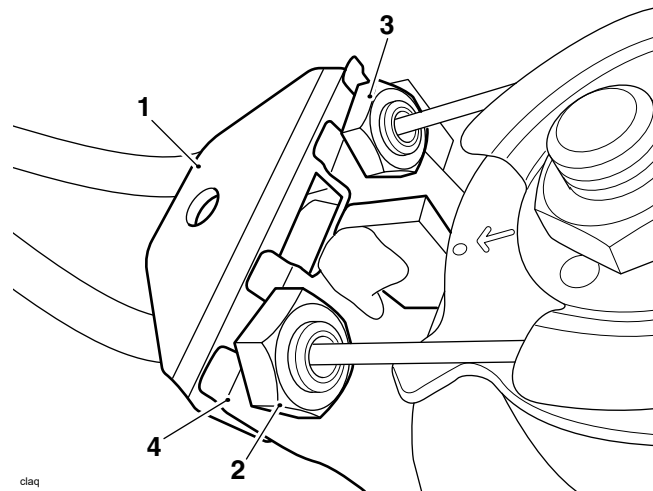


1. Cable mounting plate
2. Cover mounting bracket
3. Nuts

**Note:**

- Make sure the cover mounting bracket does not come into contact with any part of the welded exhaust butterfly valve cover mounting bracket.
- Make sure the cover mounting bracket is fitted squarely and fully pushed onto the cable mounting plate.

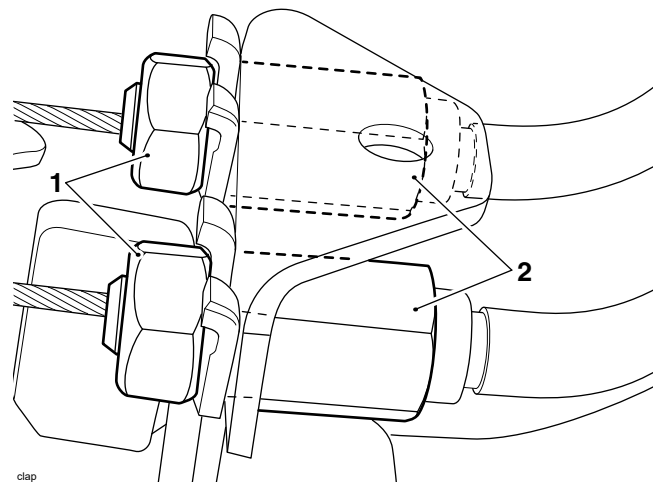
20. Push down on the cover mounting bracket making sure that the cable ends are fully down into the slots on the cable mounting plate, do not fully tighten the nuts at this stage.



1. Cover mounting bracket
2. Cable (silver 90° bend)
3. Cable (black 90° bend)
4. Cable mounting plate

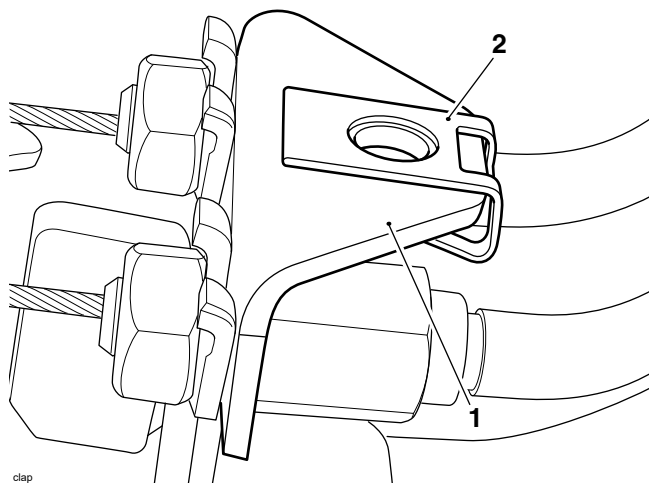
**Note:**

- Make sure the cables are fully fitted into the slots on the cable mounting bracket.
21. Counter hold the exhaust butterfly valve cables and tighten the nuts to **5 Nm**.



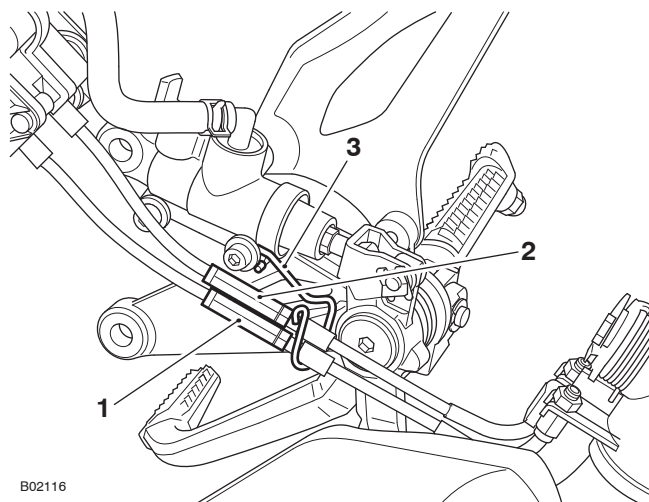
1. Nuts
2. Exhaust butterfly valve cables

22. Fit the captive nut to the cover mounting bracket.



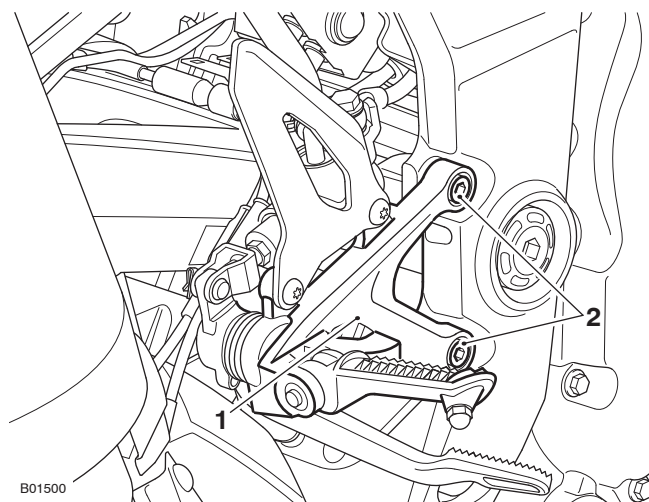
- 1. Cover mounting bracket
- 2. Captive nut

23. Refit the cables into the wire guide as noted during removal.



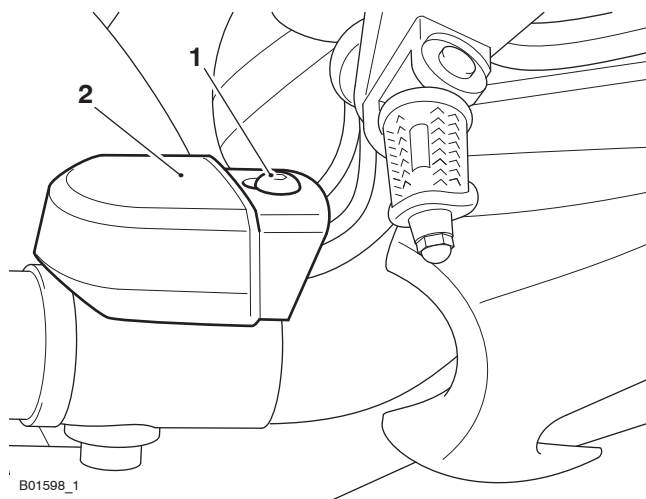
- 1. Cable (yellow lettering)
- 2. Cable (white lettering)
- 3. Guide

24. Refit the right hand control plate and tighten the fixings to **24 Nm**.



- 1. Control plate
- 2. Control plate fixings

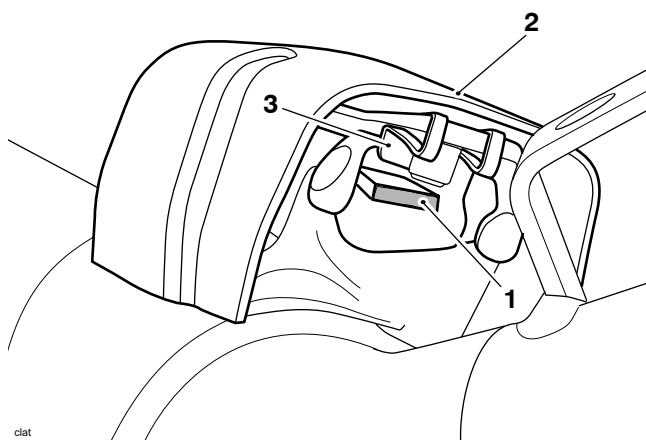
- 
25. Using the Triumph Diagnostic tool check and if necessary adjust the exhaust butterfly valve cables, refer to the Service Manual - Exhaust Butterfly Cables - Check/Adjustment.
  26. Fit the exhaust butterfly valve cover and tighten the fixing to **5 Nm**.



1. Fixing
2. Cover

**Note:**

- Make sure the fixing and cover mounting bracket do not come into contact with the sawn off edge of the remaining welded exhaust butterfly valve cover mounting bracket.
27. Visually check that the sawn edge of the cover mounting bracket does not interfere with the fixing.



1. Cover mounting bracket sawn edge
2. Cover
3. Captive nut

---

### Other Instructions

Once completed, please mark the Service Record Book that the requirements of this bulletin have been complied with.

Before returning the motorcycle to the customer, download the latest calibration using the current version of the Triumph diagnostic software to the following:

- Engine electronic control module
- Chassis electronic control module (if fitted)
- Keyless electronic control module (if fitted)
- Suspension electronic control module (if fitted)
- Connectivity module (if fitted)
- Instruments (if applicable).

### Circulation

Initial and date when read and return to central file holder

<b>Service Manager</b>	<b>Parts Manager</b>	<b>Sales Manager</b>	<b>Workshop Supervisor</b>	<b>Technician 1</b>	<b>Technician 2</b>