

This bulletin is supplied as technical information only and is not an authorization for repair. No part of this publication may be reproduced, stored in a retrieval system, or transmitted, in any form or by any means, electronic, mechanical, photocopying, or otherwise, without written permission of FCA US LLC.

SUBJECT:

Front Door Lock Grommet Retrofit

OVERVIEW:

This bulletin involves retrofitting the front door lock grommet with a new part to allow the door lock to be recessed into the grommet on both front doors (Fig. 1).

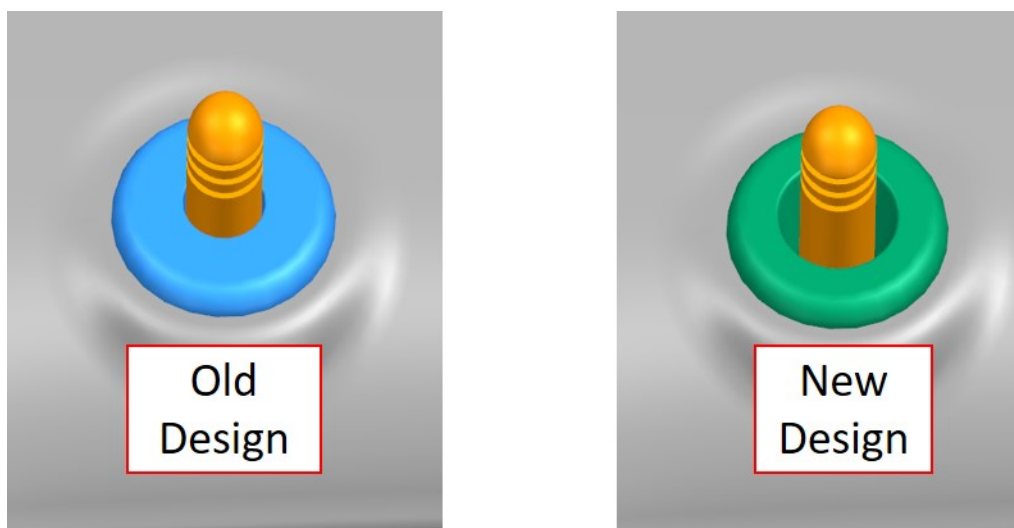


Fig. 1
Design Difference

MODELS:

2019 - 2021 (DT) RAM 1500 Pickup

NOTE: This bulletin applies to vehicles within the following markets/countries: North America, EMEA, LATAM and APAC.

NOTE: This bulletin applies to vehicles built on or before July 26, 2021 (MDH 0726XX).

SYMPTOM/CONDITION:

The customer may comment on the following:

- The arm, elbow or skin may be contacted during a auto door lock cycle event.

DIAGNOSIS:

If the customer describes the symptom/condition listed above, perform the Repair Procedure.

PARTS REQUIRED:

Qty.	Part No.	Description
2 (AR)	7MB55HL1AA	Grommet, Door Lock With these door panel colors (-N1 Mountain Brown/Lt. Frost Beige, -C1 Indigo/Frost)
2 (AR)	7MB55LC5AA	Grommet, Door Lock With these door panel colors (-CD Indigo / Sea Salt)
2 (AR)	7MB55RN8AA	Grommet, Door Lock With these door panel colors (-N8 Mountain Brown, -X5 Black/Light Mountain Brown)
2 (AR)	7MB55TX7AA	Grommet, Door Lock With these door panel colors (-TR Black/Trx Red, -XR Black/Red, -XT Black/New Saddle, -X8 Black/Diesel Gray, -X9 Black)

REPAIR PROCEDURE:

1. Remove the door panel on the side you are working on. Refer to the detailed service procedures available in DealerConnect> Service Library under: Service Info>23 - Body / Doors - Front / Panel, Door Trim / Removal and Installation.
2. Hold the door panel upside down on a table letting the top surface rest on a soft cloth to avoid damage to the door panel.
 - Cut the grommet lower portion either with a saw, knife or side cutters as shown below (Fig. 2) .
 - It maybe necessary to remove the grommet from the door panel by pushing it through by hand or with a screwdriver (Fig. 3) .

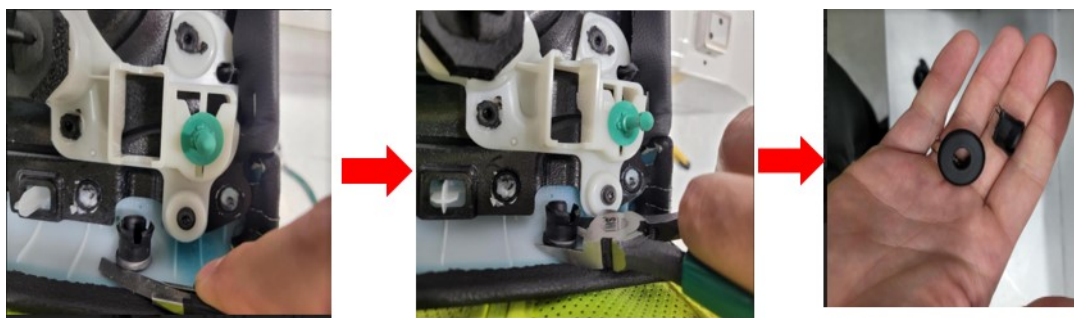


Fig. 2
Grommet Cutting

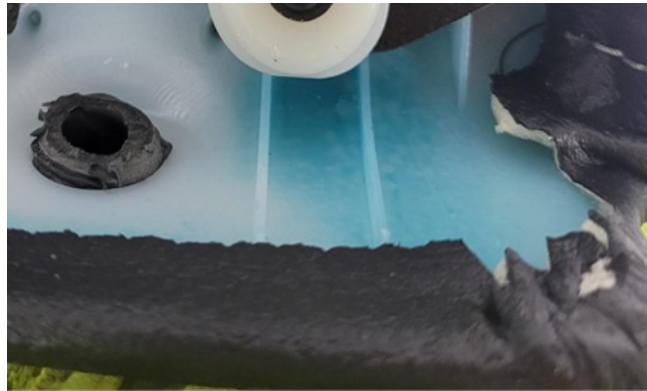


Fig. 3
Grommet Removal

3. Hold the door upper panel straight and push the new grommet straight in until it is flush with the door trim surface, apply pressure as needed until it sits flush (Fig. 4) .

NOTE: To aid in installation of the grommet into the door panel an exhaust hanger plier with a 14 mm (9/16) socket and Mopar part # 05066440AB soft top zipper lube can be used,

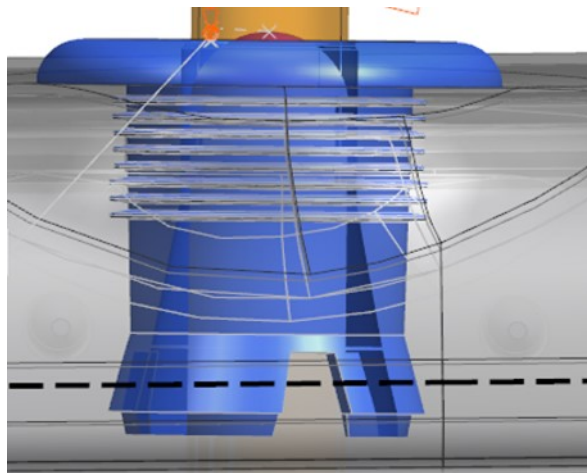


Fig. 4
Grommet Inserted

NOTE: Door lock grommet must be flush to the door panel (Fig. 5) .

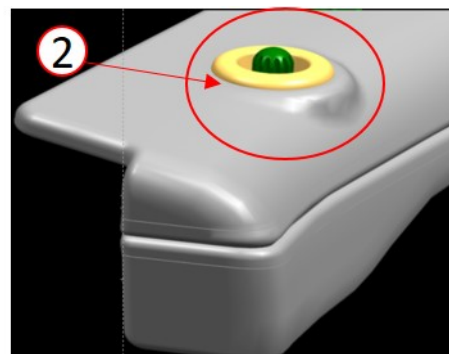
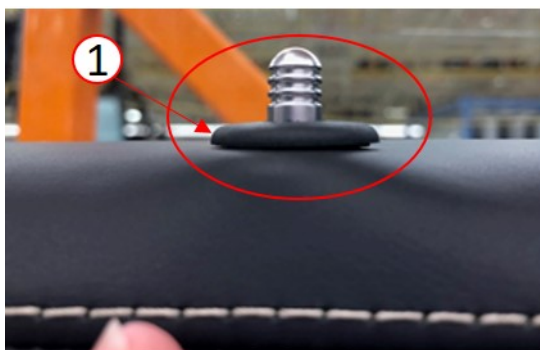


Fig. 5
Door Lock Grommet Flush

1 - Not Flush to Door Panel.

2 - Flush to Door Panel, Correct Installation.

4. Install the door panel on the side you are working on. Refer to the detailed service procedures available in DealerConnect> Service Library under: Service Info>23 - Body / Doors - Front / Panel, Door Trim / Removal and Installation.
5. Verify the door lock knob operation.
6. Repeat the procedure for the other front door lock grommet [Step 1](#).

POLICY:

Reimbursable within the provisions of the warranty.

TIME ALLOWANCE:

Labor Operation No:	Description	Skill Category	Amount
23-20-22-9W	Front Door Lock Grommet - Replace on Both Doors (0 - Introduction)	6 - Electrical and Body Systems	0.8 Hrs.

FAILURE CODE:

ZZ	Service Action
----	----------------