



Technical Service Bulletin

66 Paint is peeling on the front spoiler on the inside of the wheel housing opening

66 21 77 2065000/1 November 12, 2021.

Model(s)	Year	VIN Range	Vehicle-Specific Equipment
Q3	2019 - 2020	All	Not Applicable

Condition

Customer states:

- The paint on the front lower spoiler is peeling. The peeling is located specifically in the area of the lower spoiler in the wheel housing.

Workshop findings:

- The paint peel is confirmed on visual inspection. No outside influence (e.g. stone chips, scuffs, etc.) is found. It begins inside the wheel housing and, in advanced stages, migrates to the front of the lower spoiler lip.

Technical Background

- The root cause of the paint peel is due to poor paint adhesion in the production process of the front lower spoiler (Figure 1).



Figure 1. Location of paint peel on the front lower spoiler.



Technical Service Bulletin

2. The area of the paint peel at issue is located as shown in Figure 2.

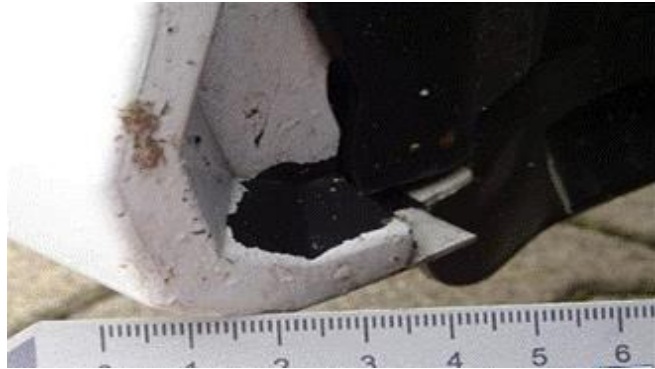


Figure 2. Paint peel location on the front lower spoiler.

3. Figure 3 shows the origin of the paint peel condition.



Figure 3. Interior view of the paint peel on the front lower spoiler.

4. Figure 4 shows an alternative view and extent of the loss of adhesion.

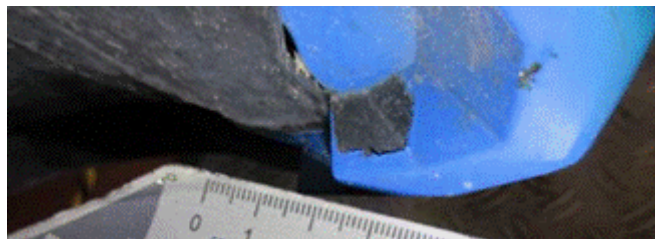


Figure 4. Paint peel as discovered from the right side of the front lower spoiler.

Production Solution

The surface preparation and paint application process have been corrected in production.




Technical Service Bulletin

Service

Should the front lower spoiler exhibit the condition specifically described in this TSB do not refinish or repaint the front lower spoiler. The front lower spoiler must be replaced.

Warranty

 Note: This TSB only applies if the paint defect described here occurs specifically without evidence of any outside impact (e.g. stone chips, scuffs, etc.). Cases that deviate from the described condition or specific location of the paint defect in this TSB or are found to have evidence of outside influence should be addressed according to the warranty policies in place in Warranty Policies and Procedures. Any paint defect including the condition described in this TSB will require AASM authorization. Per Audi Policy Section 4.2 AASM authorization along with the requisite photo, video and/or print documentation is required prior to repair. All documentation should describe the nature and location of the defect as it is discovered.			
Claim Type:	<ul style="list-style-type: none"> • 950 for paint defects before delivery • 150 for paint defects after delivery • If the vehicle is outside any warranty, this Technical Service Bulletin is informational only. 		
Service Number:	6603		
Damage Code:	0067		
Labor Operations:	zFAS systems calibration:		
	<i>If alignment is required, measurement sheets must be uploaded to Doc-it</i>		
	Overhead view camera adjust (if equipped):		
	Overhead view camera adjust	9083 1550	See SRT with associated operations
	Radar sensor adjust (if equipped):		
<i>If alignment is not required:</i> Vehicle front and rear checked	4495 0150	See SRT with associated operations	
Preparation driver-assist calibration	9092 0050	See SRT with associated operations	



Technical Service Bulletin

	Radar sensor adjust	9163 1550	See SRT with associated operations
	Or		
	<i>If alignment is required:</i> Vehicle front and rear measured	4495 0350	See SRT with associated operations
	Preparation driver-assist calibration	9092 0051	See SRT with associated operations
	Radar sensor adjust	9163 1550	See SRT with associated operations
Sublet Operations:	Replace and paint new part (Labor Operation listed in Outside Labor)	L0011600 (Solid Paint) L0021600 (Metallic Paint) L0031600 (Pearl Paint)	Max 320 TU x dealer labor rate
Diagnostic Time:	GFF	0150 0000	Time stated on the diagnostic protocol (Max 50 TU)
	Road test prior to the service procedure	No allowance	0 TU
	Road test after the service procedure	0121 0004	10 TU
Claim Comment:	As per TSB #2065000/1		

All warranty claims submitted for payment must be in accordance with the *Audi Warranty Policies and Procedures Manual*. Claims are subject to review or audit by Audi Warranty.

Required Parts and Tools

Always check with your Parts Department and/or ETKA for the latest information and parts bulletins.		
Part Number	Part Description	Quantity



Technical Service Bulletin

83A807061BGRU	Front Spoiler - Primed	01
83A807547GRU	Front Spoiler, Left - Primed	01
83A807548GRU	Front Spoiler, Right - Primed	01
N/A	Paint Listed as MATERIAL in Outside Material	Qty. 1 Each \$ Cost of Material (Max \$200)

Additional Information

All parts and service references provided in this TSB (2065000) are subject to change and/or removal.

©2021 Audi of America, Inc. All rights reserved. The information contained in this document is based on the latest information available at the time of printing and is subject to the copyright and other intellectual property rights of Audi of America, Inc., its affiliated companies, and its licensors. All rights are reserved to make changes at any time without notice. No part of this document may be reproduced, stored in a retrieval system, or transmitted in any form or by any means, electronic, mechanical, photocopying, recording, or otherwise, nor may these materials be modified or reposted to other sites without the prior expressed written permission of the publisher.