



Spartan Fire, LLC

Technical Service Bulletin
TSB21-570-001

DATE: 7/27/2021

APPLIES TO: This service bulletin applies to Model Year 2019 through 2022 Gladiator and Metro Star emergency response chassis cabs built between January 22, 2019 and June 21, 2021.

CONDITION: Visible lines may appear in the 360 camera display.

CORRECTION: Install isolation kit and noise filter

LABOR ALLOCATION: 1 hr

CLASSIFICATION: T3

PARTS NEEDED:

<u>QTY</u>	<u>Part Number</u>	<u>Description</u>
1	4887-NN2-009	Isolation Kit <i>(hardware and filter)</i>
1	2442-GG5-1347	Connector – Deutsch DTM04-3P
1	2442-GG5-1348	Wedgelock – Deutsch WM-3P
3	0636-GG5-1128	Terminal-Deutsch
1	2442-GG5-1234	Connector – Deutsch DTM06-3S
1	2442-GG5-1233	Wedgelock – Deutsch WM-3S
3	0636-GG5-1129	Terminal – Deutsch

Reference: Kit # S-3759-001

GENERAL INSTRUCTIONS:

Thoroughly review entire service bulletin before starting work. If there are questions or concerns with steps defined in this service bulletin, contact Spartan Fire, LLC. Customer & Product Support Group.

All applicable industry safety standards must be followed when performing work identified in this procedure.

Service Bulletins are intended for use by Professional Technicians only. They are written to guide Professional Technicians in performing service to vehicles of specific nature in conjunction with industry standards. Professional Technicians should be appropriately trained on industry standards and have the tools and equipment to perform procedures safely and properly.

STEP-BY-STEP INSTRUCTIONS:

1. Open center dash electrical lid (*doghouse cover*).
2. Locate FRC 360 Camera ECU and remove fasteners.
3. Using Isolation kit 4887-NN2-009, install 4 small nylon shoulder washers on mounting flange of ECU and insert fasteners through the shoulder washer and flange. *See Figure 2.1*



FIG. 2.1

4. On bottom side of ECU flange, install a large nylon washer and a rubber well nut on each fastener. *See Figure 2.2*

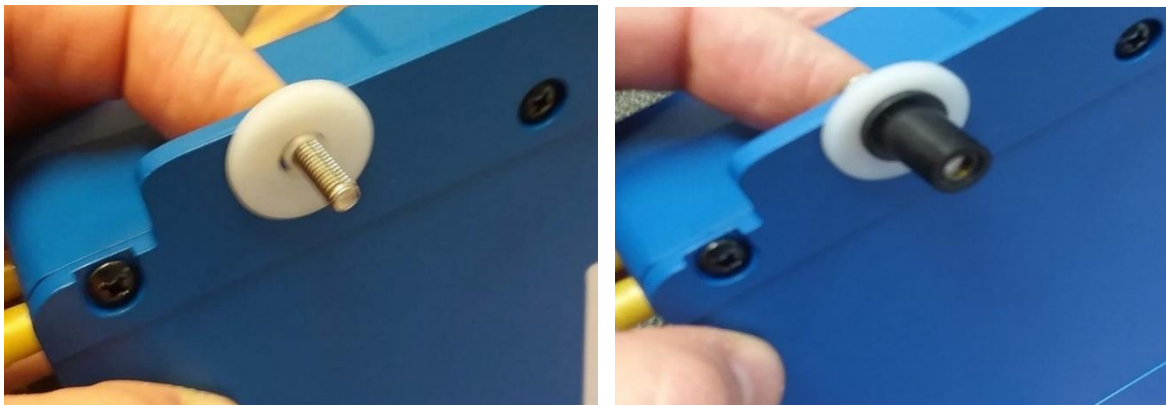


FIG 2.2

Service Bulletins are intended for use by Professional Technicians only. They are written to guide Professional Technicians in performing service to vehicles of specific nature in conjunction with industry standards. Professional Technicians should be appropriately trained on industry standards and have the tools and equipment to perform procedures safely and properly.

5. Drill out original mounting holes to 5/16 inch to accept the new rubber well nuts.
6. Install assembled FRC ECU with nylon shoulder washers, rubber well nuts and isolation washers and hand tighten screws. *See Figure 3.1*

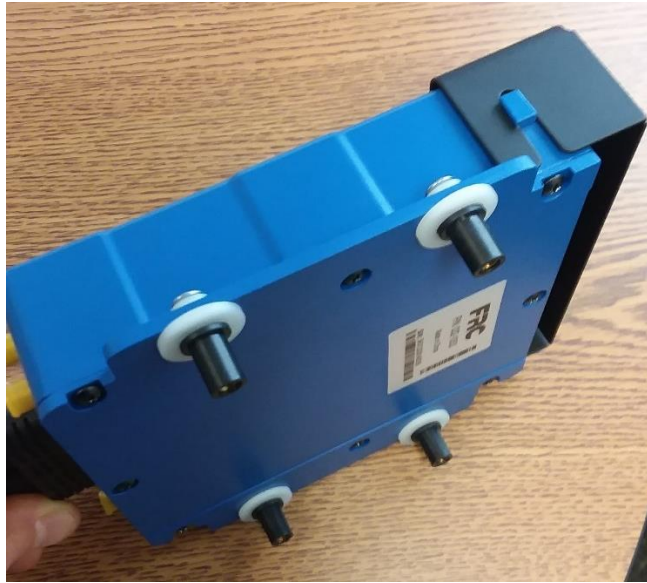


FIG 3.1

7. Locate FRC 360 front, rear and both side cameras and install rubber well nuts.
Note: Nylon shoulder washers not used on cameras. See Figure 3.2

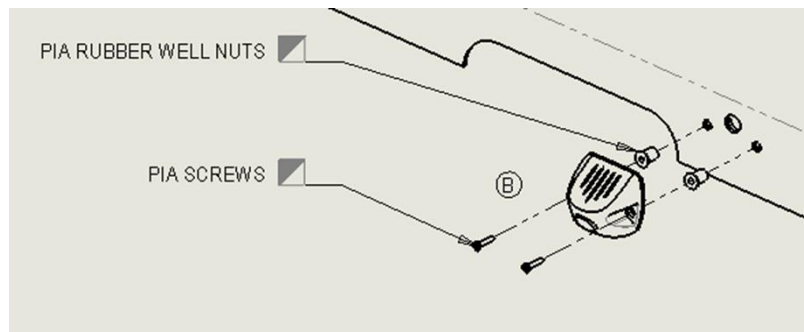


FIG 3.2

Service Bulletins are intended for use by Professional Technicians only. They are written to guide Professional Technicians in performing service to vehicles of specific nature in conjunction with industry standards. Professional Technicians should be appropriately trained on industry standards and have the tools and equipment to perform procedures safely and properly.

8. Locate 6 cavity connector at FRC 360 ECU and disconnect.
9. Remove yellow, red, and black wires from existing 6 cavity DTM camera connector.
10. Install FRC Power Supply Filter (from kit #4887-NN2-009) using the deutsch connector and terminals as shown in Figure 4.1.

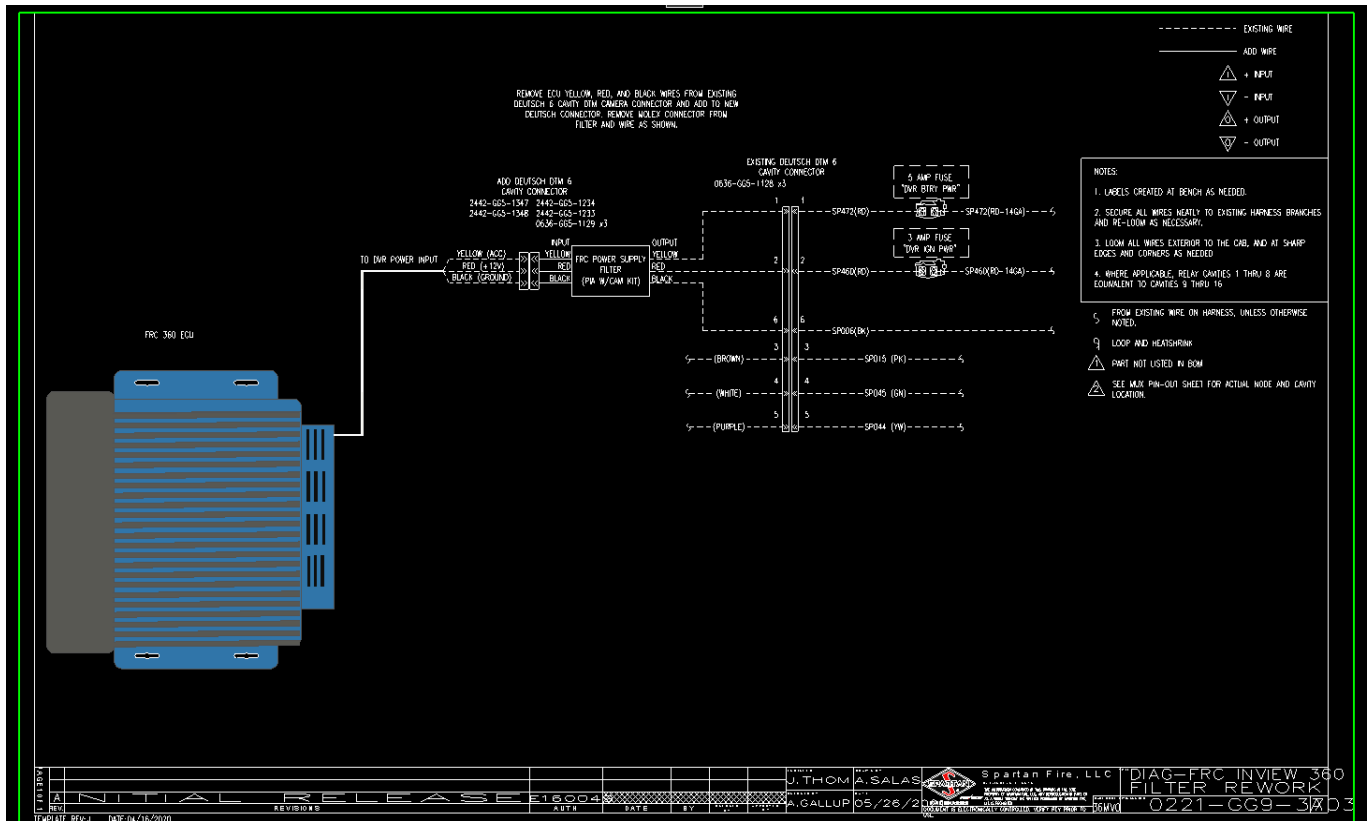


FIG. 4.1

11. Power up and operate camera to validate that the lines on the screen issue is resolved.

Service Bulletins are intended for use by Professional Technicians only. They are written to guide Professional Technicians in performing service to vehicles of specific nature in conjunction with industry standards. Professional Technicians should be appropriately trained on industry standards and have the tools and equipment to perform procedures safely and properly.