 <b>HYUNDAI</b> <b>Technical Service Bulletin</b>	GROUP <b>Engine</b>	NUMBER <b>21-EM-011H</b>
	DATE <b>October, 2021</b>	MODEL(S) <b>Sonata N-Line (DN8a)</b>
<b>SUBJECT</b> DN8A N-LINE EXHAUST TIP ALIGNMENT		

**Description:** Certain Sonata N-Line vehicles may have an uneven appearance between LH and RH exhaust tips due to slightly misaligned rear mufflers. This bulletin describes the procedure to adjust and realign the rear mufflers to correct the appearance.



**Applicable Vehicles:** ALL 2021-22MY Sonata N-Line (DN8a) equipped with 2.5T-GDI engines.

**Warranty Information:**

Model	Op Code	Operation	Op Time	Causal Part	Nature Code	Cause Code
Sonata N-Line (DN8a)	28700F05	MUFFLER ASSY-REAR (ALL)	0.4	28710-L1900	A36	ZZ1

**NOTE:** Normal Warranty Applies.

**Service Procedure:**

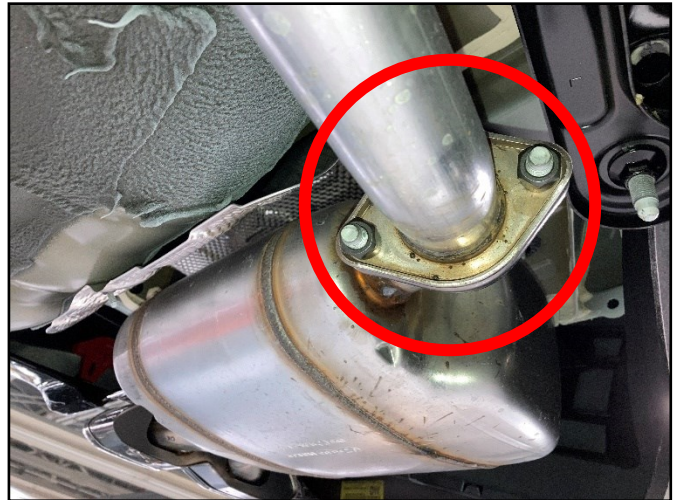
1. If the LH side exhaust tip appears out of alignment, loosen the LH side exhaust flange bolts to allow muffler position adjustment.

**Tightening Torque:**

36 lb-ft (49 Nm)

**CAUTION**

Exhaust components are hot and can cause severe burns. Allow exhaust system to sufficiently cool before servicing vehicle.



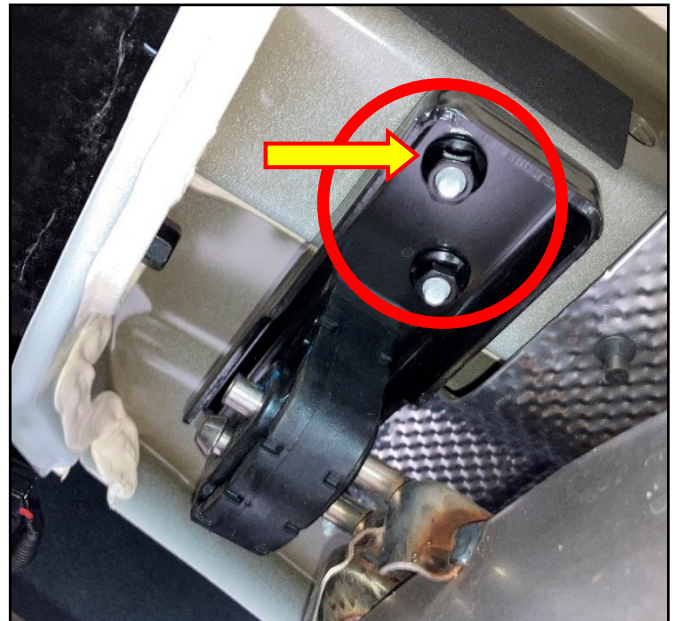
2. Loosen LH side exhaust hanger nuts from the studs, protruding from the car under body.

**Tightening torque:**

15 lb-ft (20 Nm)

**NOTICE**

There is roughly 2mm of play available in the right bracket hole. (See arrow). This will aid in adjusting final position.



3. With the exhaust hanger and flange nuts loosened, adjust the position of the LH muffler tip to match the RH muffler tip. Tighten the nuts when the muffler tip reaches the desired position.

**NOTICE**

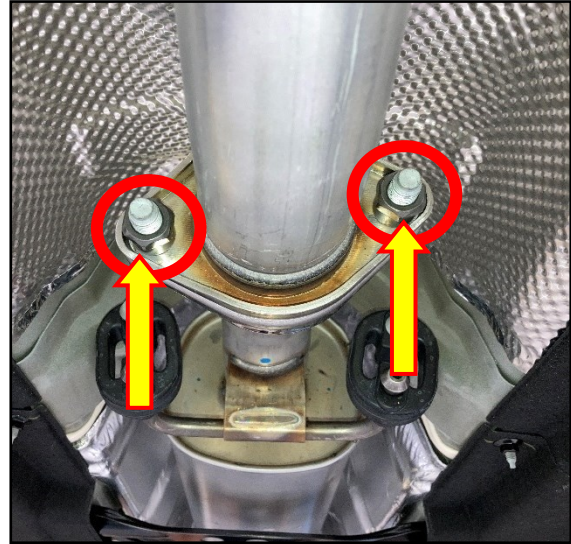
This step may require two individuals. One person to secure the exhaust nuts, and one person to hold the exhaust tips in the desired position.



4. If the appearance of the RH side muffler exhaust tip is misaligned, refer to service procedure steps 1-3, and apply them to the RH side.

It may be necessary to loosen the flange nuts at the mid-pipe connection in order to adjust the RH side exhaust tip.

**Tightening torque:**  
36 lb-ft (49 Nm)



5. Verify that the alignment of the exhaust tips appear symmetrical.
6. The service procedure is now complete.