



Technical Service Bulletin

SUBJECT:		No: TSB-21-42A-010	
UPDATES TO BODY - SERVICE MANUAL REVISION		DATE: October 2021	
		MODEL: See Below	
CIRCULATE TO:	<input type="checkbox"/> GENERAL MANAGER	<input checked="" type="checkbox"/> PARTS MANAGER	<input checked="" type="checkbox"/> TECHNICIAN
<input checked="" type="checkbox"/> SERVICE ADVISOR	<input checked="" type="checkbox"/> SERVICE MANAGER	<input checked="" type="checkbox"/> WARRANTY PROCESSOR	<input type="checkbox"/> SALES MANAGER

PURPOSE

This TSB provides updated content for the Body section of the affected Service Manual, Loose Panel Removal and Installation.

AFFECTED VEHICLES

- 2020 Eclipse Cross

AFFECTED SERVICE MANUAL

- 2020 Eclipse Cross Service Manual, Group 42A-Body -> Loose Panel



Please replace the page in the applicable Eclipse Cross Service Manual, Group 42A-Body -> Door section as follows:

- 2020 Eclipse Cross Service Manual, Group 42A-Body -> Loose Panel Removal and Installation - Attached sheet 9

BODY
LOOSE PANEL

42A-173

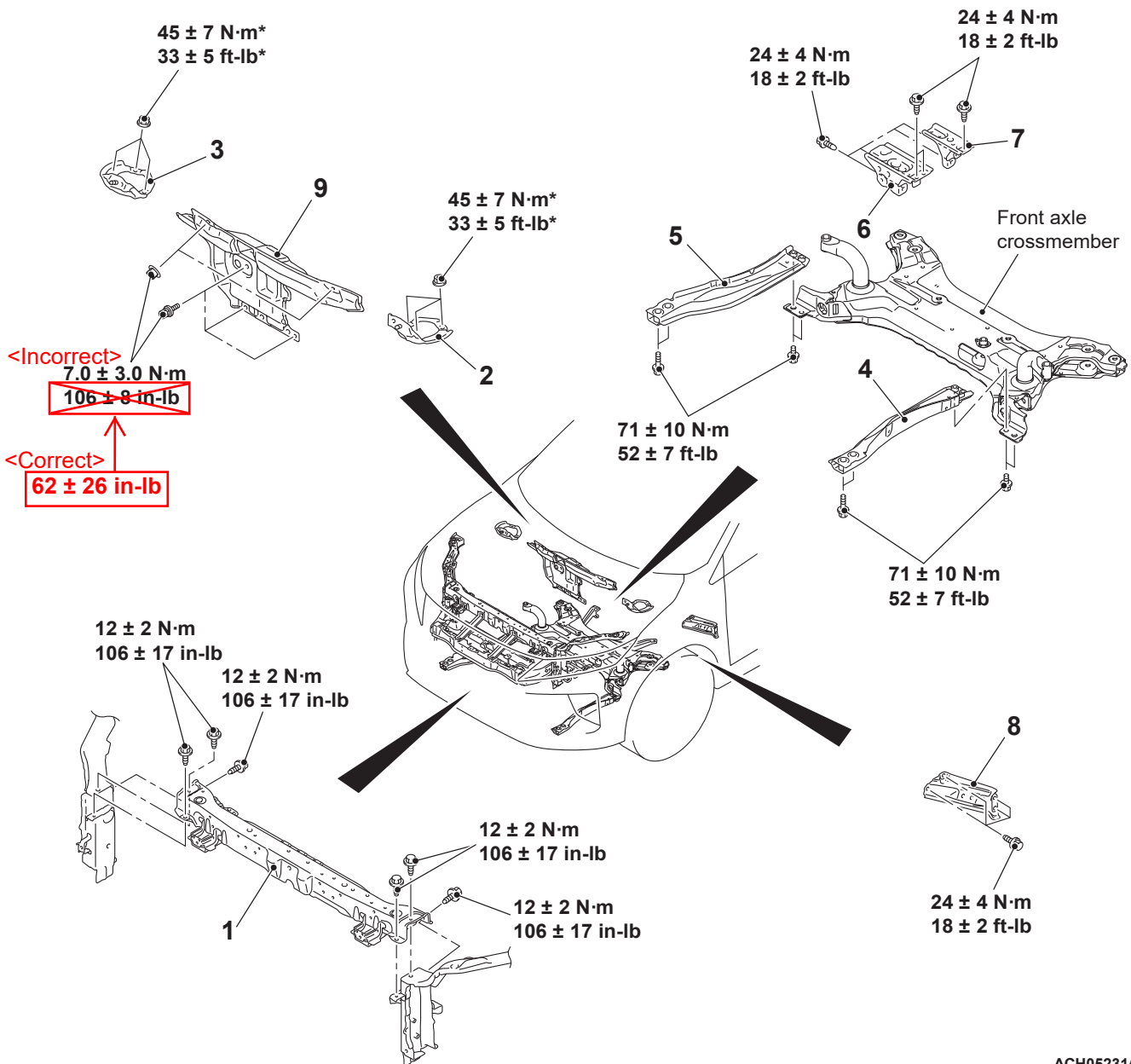
LOOSE PANEL

REMOVAL AND INSTALLATION

M1421003102193

CAUTION

- Disconnect the battery (-) terminal and wait for 60 seconds or more before starting work. Insulate the disconnected (-) terminal by wrapping a tape.
- Handle the front impact sensor with sufficient caution, and do not drop the sensor or allow contact with water, oil, or others. If a dent, crack, deformation and others are discovered, replace it with a new one.
- The parts indicated by * indicates parts which should be temporarily tightened, and then fully tightened with the vehicle standing on the ground at curb weight.



ACH05231AC