



Technical Service Bulletin

SUBJECT:		No: TSB-21-13-002	
UPDATES TO FUEL - SERVICE MANUAL REVISION		DATE: October 2021	
		MODEL: See Below	
CIRCULATE TO:	<input type="checkbox"/> GENERAL MANAGER	<input checked="" type="checkbox"/> PARTS MANAGER	<input checked="" type="checkbox"/> TECHNICIAN
<input checked="" type="checkbox"/> SERVICE ADVISOR	<input checked="" type="checkbox"/> SERVICE MANAGER	<input checked="" type="checkbox"/> WARRANTY PROCESSOR	<input type="checkbox"/> SALES MANAGER

PURPOSE

This TSB provides updated content for the Multiport Fuel Injection section of the affected Service Manuals, Fuel.

AFFECTED VEHICLES

- 2014 Mirage
- 2015 Mirage
- 2017 Mirage
- 2019 Mirage
- 2021 Mirage

AFFECTED SERVICE MANUALS

- 2014, 2015, 2017, 2019, and 2021 Mirage Service Manuals, Group 13-Fuel



Please replace the pages in the 2014 Mirage Service Manual, Group 13-Fuel, Multiport Fuel Injection section as follows:

- 2014 Mirage Service Manual, Group 13 - Fuel -> Multiport Fuel Injection -> Injector Removal and Installation - Attached sheet 2
- 2014 Mirage Service Manual, Group 13 - Fuel -> Multiport Fuel Injection -> Throttle Body Assembly Removal and Installation - Attached sheet 3

Please replace the pages in the 2015 Mirage Service Manual, Group 13-Fuel -> Multiport Fuel Injection section as follows:

- 2015 Mirage Service Manual, Group 13 - Fuel -> Multiport Fuel Injection -> Injector Removal and Installation - Attached sheet 2
- 2015 Mirage Service Manual, Group 13 - Fuel -> Multiport Fuel Injection -> Throttle Body Assembly Removal and Installation - Attached sheet 3

Please replace the pages in the 2017 Mirage Service Manual, Group 13-Fuel -> Multiport Fuel Injection section as follows:

- 2017 Mirage Service Manual, Group 13 - Fuel -> Multiport Fuel Injection -> Injector Removal and Installation - Attached sheet 2
- 2017 Mirage Service Manual, Group 13 - Fuel -> Multiport Fuel Injection -> Throttle Body Assembly Removal and Installation - Attached sheet 3

Please replace the pages in the 2019 Mirage Service Manual, Group 13-Fuel -> Multiport Fuel Injection section as follows:

- 2019 Mirage Service Manual, Group 13 - Fuel -> Multiport Fuel Injection -> Injector Removal and Installation - Attached sheet 2
- 2019 Mirage Service Manual, Group 13 - Fuel -> Multiport Fuel Injection -> Throttle Body Assembly Removal and Installation - Attached sheet 3

Please replace the pages in the 2021 Mirage Service Manual, Group 13-Fuel -> Multiport Fuel Injection section as follows:

- 2021 Mirage Service Manual, Group 13 - Fuel -> Multiport Fuel Injection -> Injector Removal and Installation - Attached sheet 2
- 2021 Mirage Service Manual, Group 13 - Fuel -> Multiport Fuel Injection -> Throttle Body Assembly Removal and Installation - Attached sheet 3

MULTIPOINT FUEL INJECTION (MFI) INJECTOR

INJECTOR

REMOVAL AND INSTALLATION

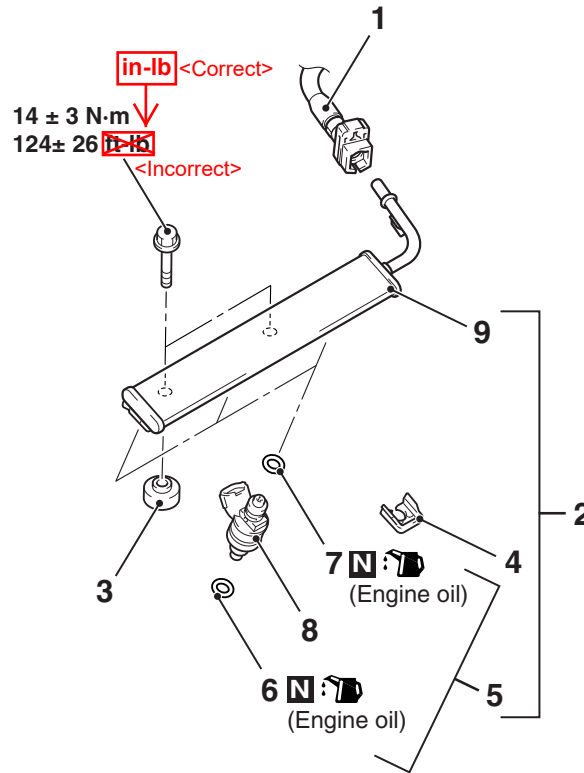
M1131007104306

Pre-removal operation

- Fuel Line Pressure Reduction (Refer to [P.13A-662](#)).
- Air Cleaner Assembly Removal (Refer to GROUP 15 – Air Cleaner [P.15-5](#)).

Post-installation operation

- Air Cleaner Assembly Installation (Refer to GROUP 15 – Air Cleaner [P.15-5](#)).
- Fuel Leak Check.



ACB02843AB

Removal steps

- PCV hose connection (Refer to GROUP 11A – Cylinder Head Cover Assembly [P.11A-22](#)).
- <<A>> >>F<< 1. Fuel main pipe connection
<> >>E<< 2. fuel rail and fuel injector assembly
3. Insulator

Removal steps (Continued)

- >>D<< 4. Injector support
>>C<< 5. Fuel injector assembly
>>B<< 6. O-ring
>>A<< 7. O-ring
8. Fuel injector
9. Fuel rail

Required Special Tool:

- MB992106: O-ring Installer

MULTIPOINT FUEL INJECTION (MFI)
THROTTLE BODY ASSEMBLY

THROTTLE BODY ASSEMBLY

REMOVAL AND INSTALLATION

M1131007703316

CAUTION

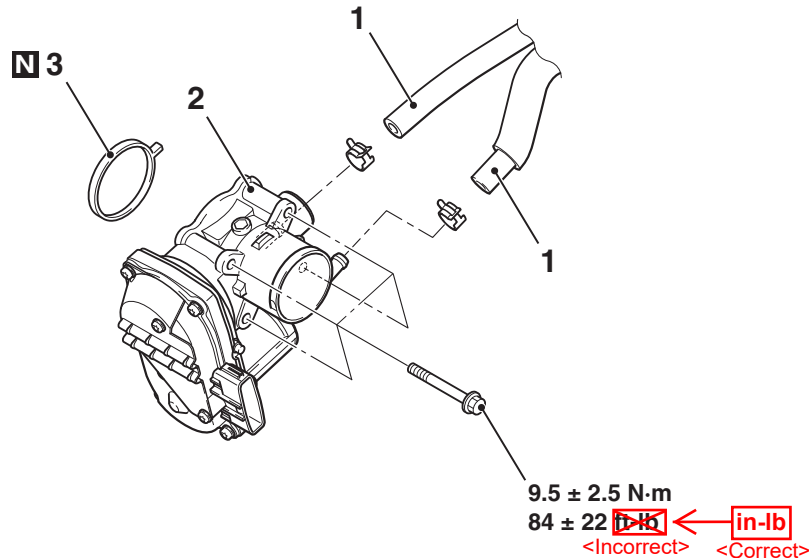
- When the throttle body assembly is replaced, initialize the learned value using scan tool MB991958 (Refer to GROUP 00 – Precautions before Service, Initialization Procedure for Learning Value in MFI Engine P.00-47).
- Never loosen the screw fixing the throttle body assembly resin cover. If the screw is loosened, the sensor incorporated in the resin cover is misaligned and the throttle body assembly does not work normally.

Pre-removal operation

- Engine Coolant Draining (Refer to GROUP 14 – On-vehicle Service, Engine Coolant Replacement P.14-6).
- Air Cleaner Assembly Removal (Refer to GROUP 15 – Air Cleaner P.15-5).
- Battery and Battery Tray Removal (Refer to GROUP 54A – Battery P.54A-9).

Post-installation operation

- Battery and Battery Tray Installation (Refer to GROUP 54A – Battery P.54A-9).
- Air Cleaner Assembly Installation (Refer to GROUP 15 – Air Cleaner P.15-5).
- Engine Coolant Refilling (Refer to GROUP 14 – On-vehicle Service, Engine Coolant Replacement P.14-6).



ACB03030AB

- >>B<<
- Removal steps**
- Initialization operation (Installation only)
1. Water hose connection

- >>A<<
- Removal steps (Continued)**
2. Throttle body assembly
 3. Throttle body gasket

INSTALLATION SERVICE POINTS

>>A<< THROTTLE BODY GASKET INSTALLATION

Securely insert the gasket in the groove of the inlet manifold without causing any torsion or damage to the gasket.

>>B<< INITIALIZATION OPERATION

Turn the ignition switch to the "ON" position and then to "LOCK" (OFF) position and hold it for at least 10 seconds.