

**Important Information on Handling Fuel Lines With Plug-In Couplings (92/21)**

Vehicle Type: **Macan (95B)**

Model Year: **As of 2019 up to 2021**

Equipment: **4-cylinder gasoline engine, 2.0 l (M-no. T2G)**

Concerns: **Fuel lines with plug-in couplings (often also referred to as "quick connectors")**

Information: To ensure that the seal in the plug-in coupling was not damaged when disconnecting the lines when working on fuel lines with plug-in couplings, the seal in the plug-in coupling must always be checked for damage before re-installing and reconnecting the lines.  
If a seal is damaged, the two lines to be connected must always be replaced.

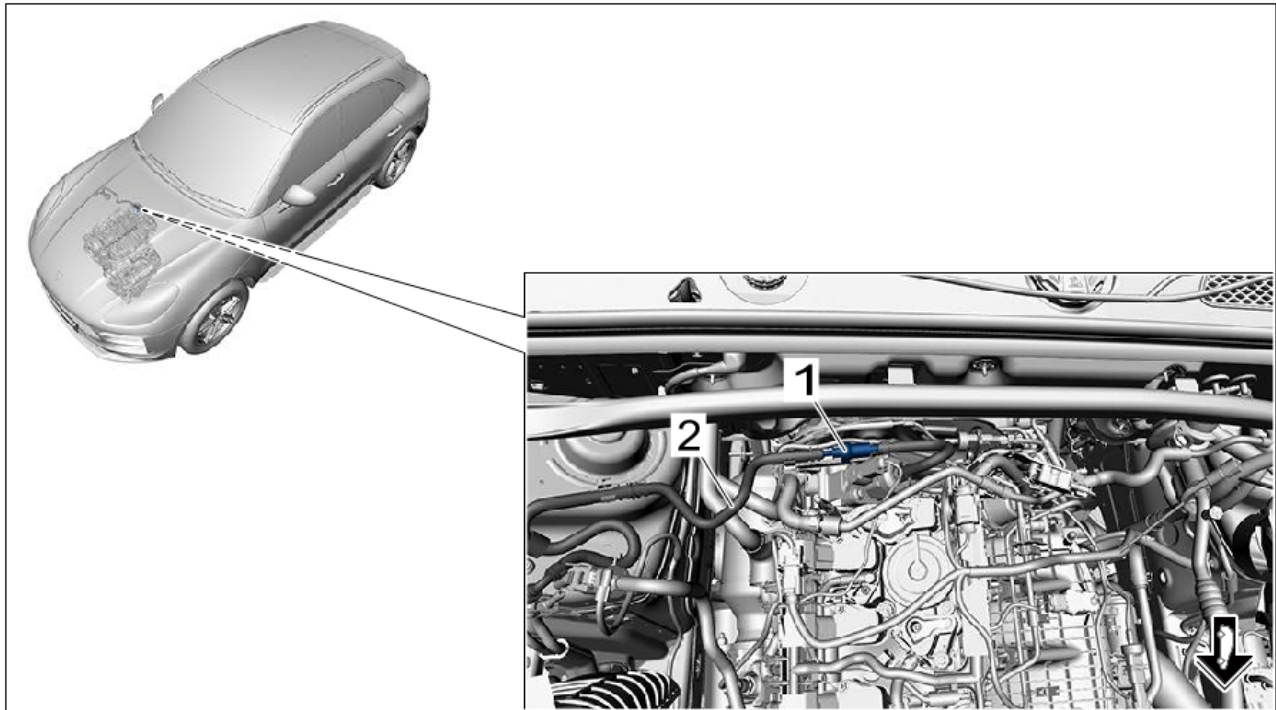
**Checking the seal in the plug-in coupling**



**Leaking fuel supply lines**

- Emerging fuel
- Smell of fuel
- Risk of fire

⇒ **Checking the seal in the plug-in coupling**



*For example: Plug-in coupling for fuel line (supply line - section in engine compartment)*



#### Information

The seal in the plug-in coupling must always be checked after the lines have been disconnected. If the seal is damaged, the two lines to be connected must always be replaced.

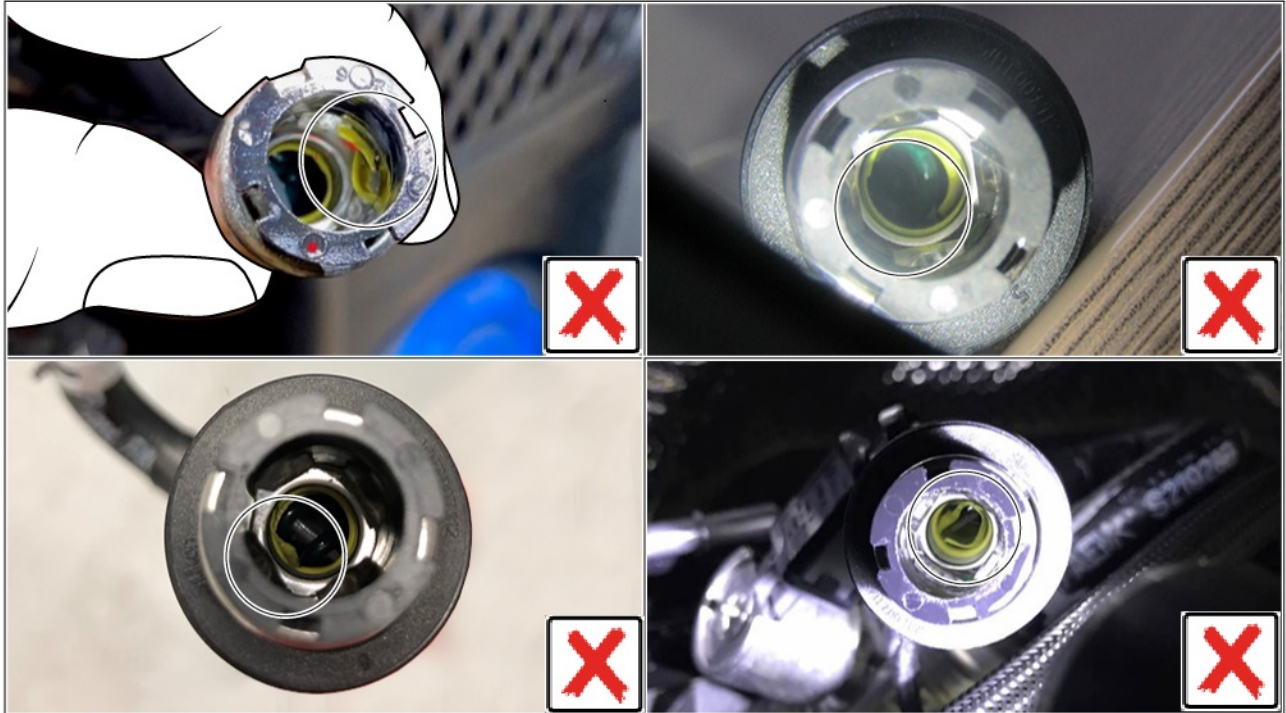


#### Information

If you feel a resistance when connecting the plug-in coupling, do not try to overcome this by applying greater force.

In this case, the seal must be checked again and the lines may need to be replaced.

Work Procedure: 1 Check the seal in the plug-in coupling for damage. ⇒ *Signs of damage to seal in plug-in coupling*



*Signs of damage to seal in plug-in coupling*

Result of check		Action required
(x)	Seal is damaged.	<b>Replace lines.</b> If the seal is damaged, both lines to be connected must always be replaced.
(✓)	Seal is <b>not</b> damaged.	<b>End of test.</b> Connect lines. If you feel a resistance when connecting the plug-in coupling, do not try to overcome this by applying greater force. In this case, the seal must be checked again and the lines may need to be replaced.

**Important Notice:** Technical Bulletins issued by Porsche Cars North America, Inc. are intended only for use by professional automotive technicians who have attended Porsche service training courses. They are written to inform those technicians of conditions that may occur on some Porsche vehicles, or to provide information that could assist in the proper servicing of a vehicle. Porsche special tools may be necessary in order to perform certain operations identified in these bulletins. Use of tools and procedures other than those Porsche recommends in these bulletins may be detrimental to the safe operation of your vehicle, and may endanger the people working on it. Properly trained Porsche technicians have the equipment, tools, safety instructions, and know-how to do the job properly and safely. Part numbers listed in these bulletins are for reference only. The work procedures updated electronically in the Porsche PIWIS diagnostic and testing device take precedence and, in the event of a discrepancy, the work procedures in the PIWIS Tester are the ones that must be followed.

© 2021 Porsche Cars North America, Inc.