



## Mack Chassis - Anthem (AN) Water Leak Around Door



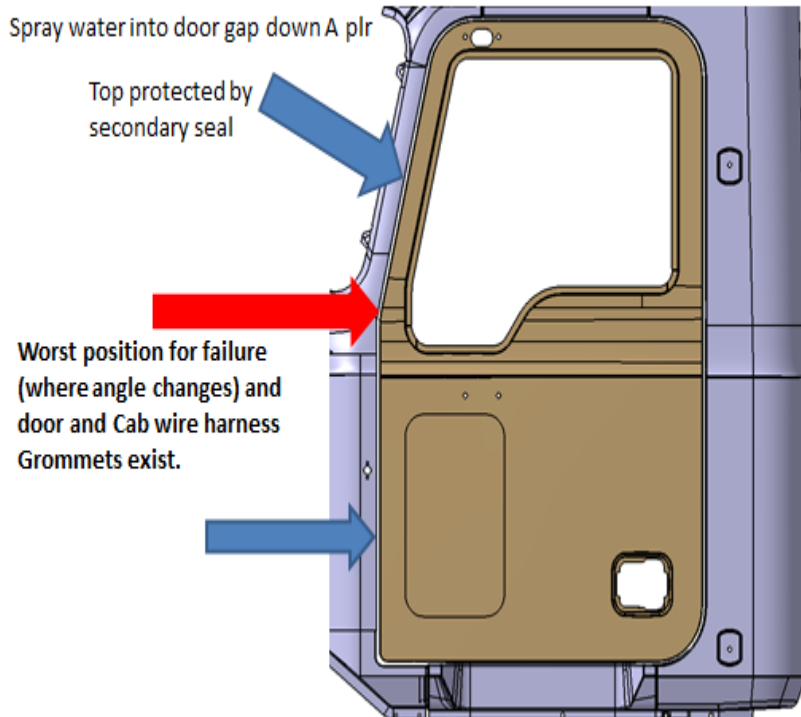
Mack Anthem models may experience water intrusion through the door seal. The likely source of intrusion can be found in the area around the bottom of the A pillar trim panel.

### Verify The Leak

Spray water into the door gap at the A pillar as shown in the image below.

#### Door seal water test evaluation

Spray water into door gap down A pillar

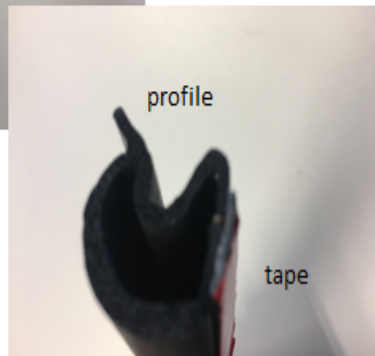


### Parts and Supplies

- Alcohol-based Cleaner (example pictured)



- 200 mm (8 in) section of door seal Part Number 22106234

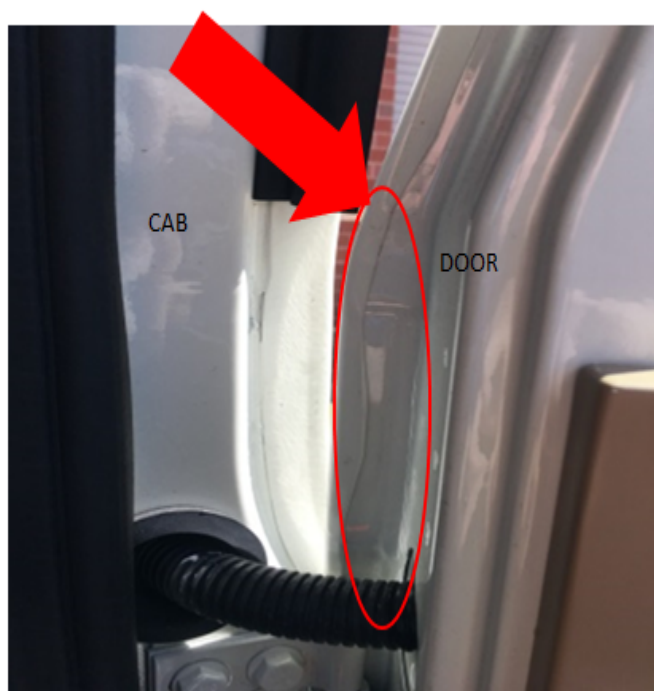


## Repair

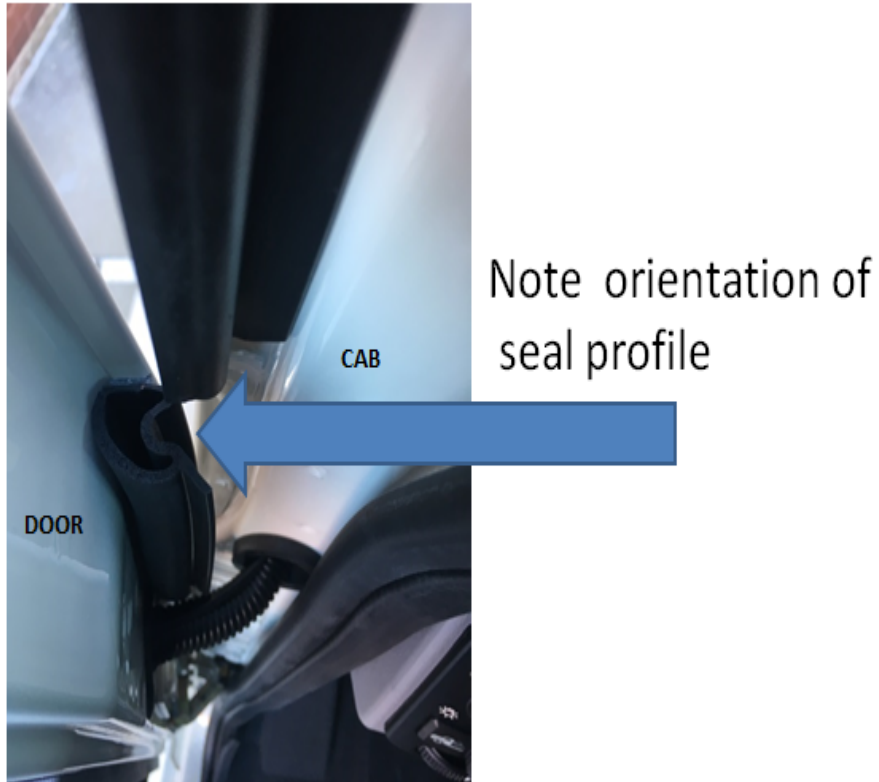
Follow the procedure below after verifying the presence of water intrusion around the area of the A pillar.

1. **Clean and prep the door hem flange where the seal tape will meet the door flange.**

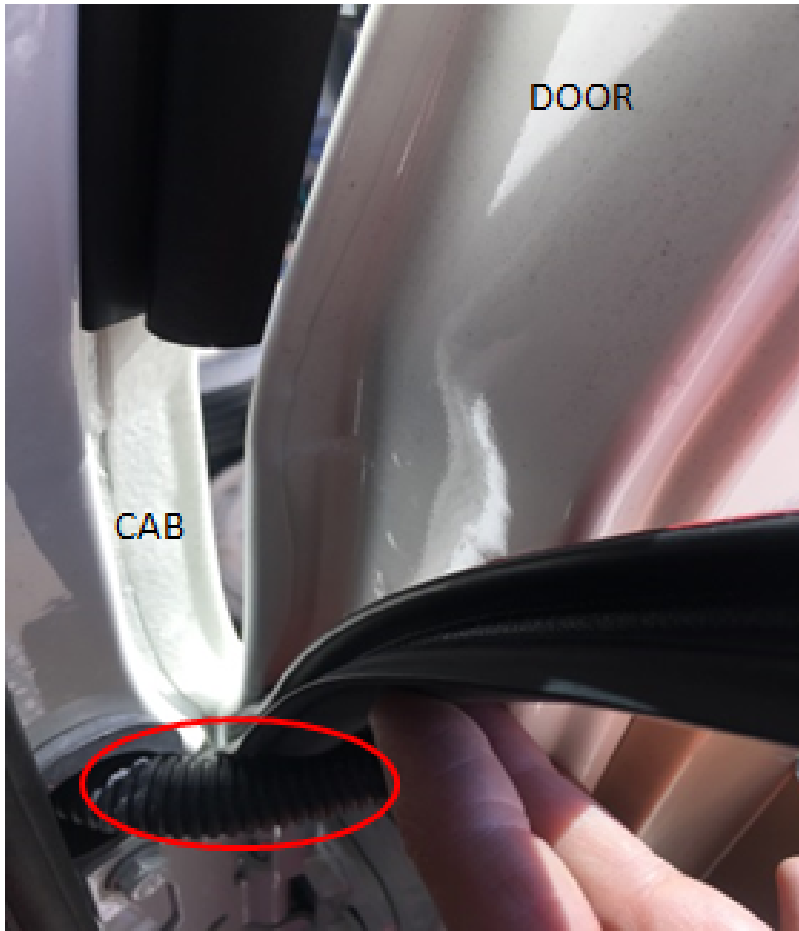
### Clean Area Circled



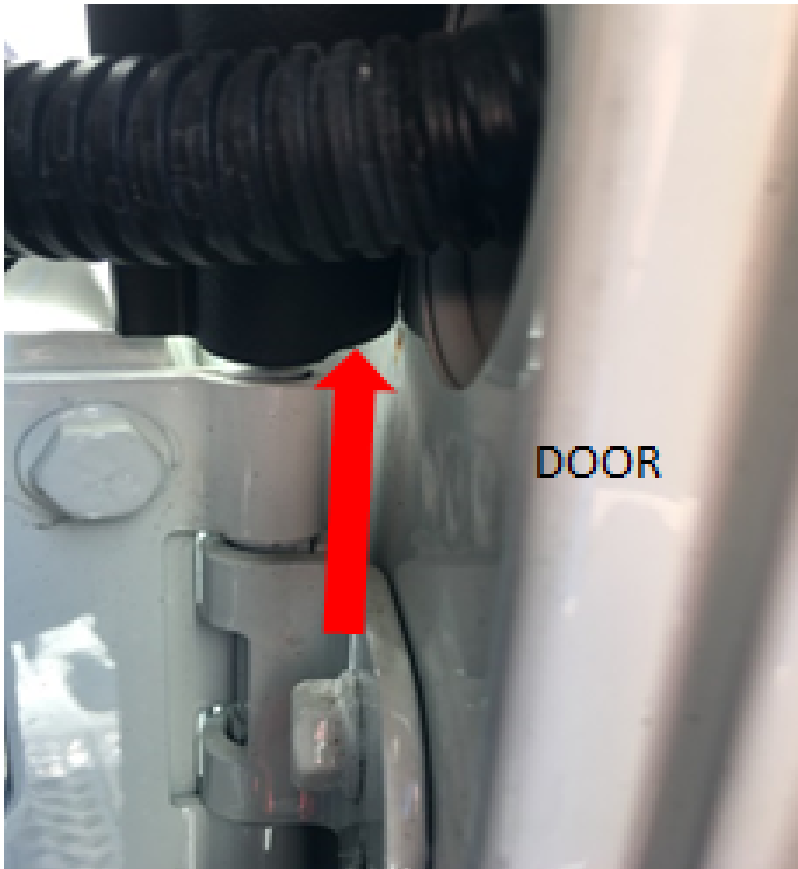
2. **Ensure the seal is oriented correctly prior to installation.**



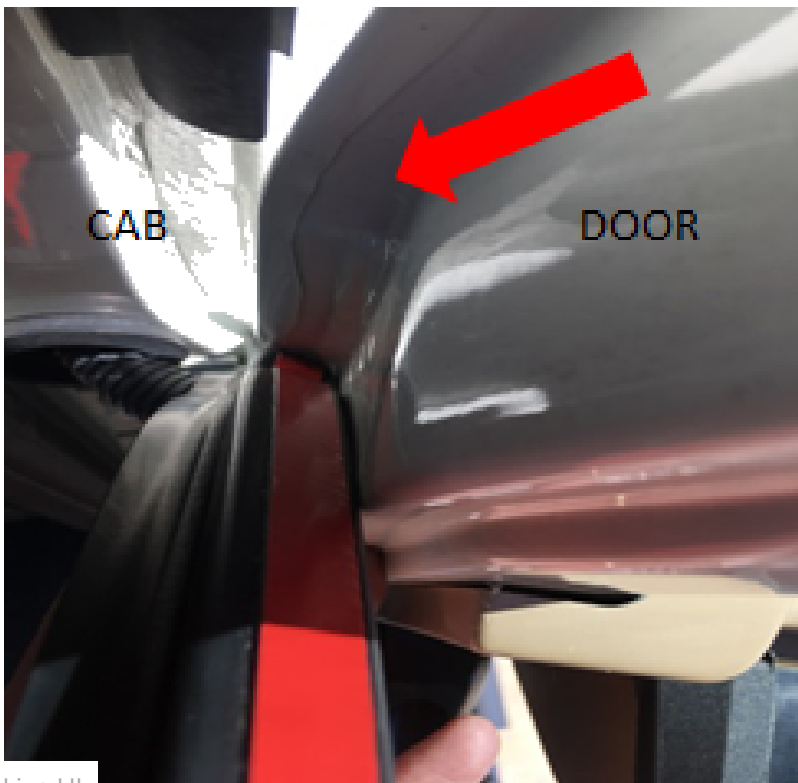
**3. Route the seal behind the wire harness.**



**4. Align the seal with the top of the upper hinge.**

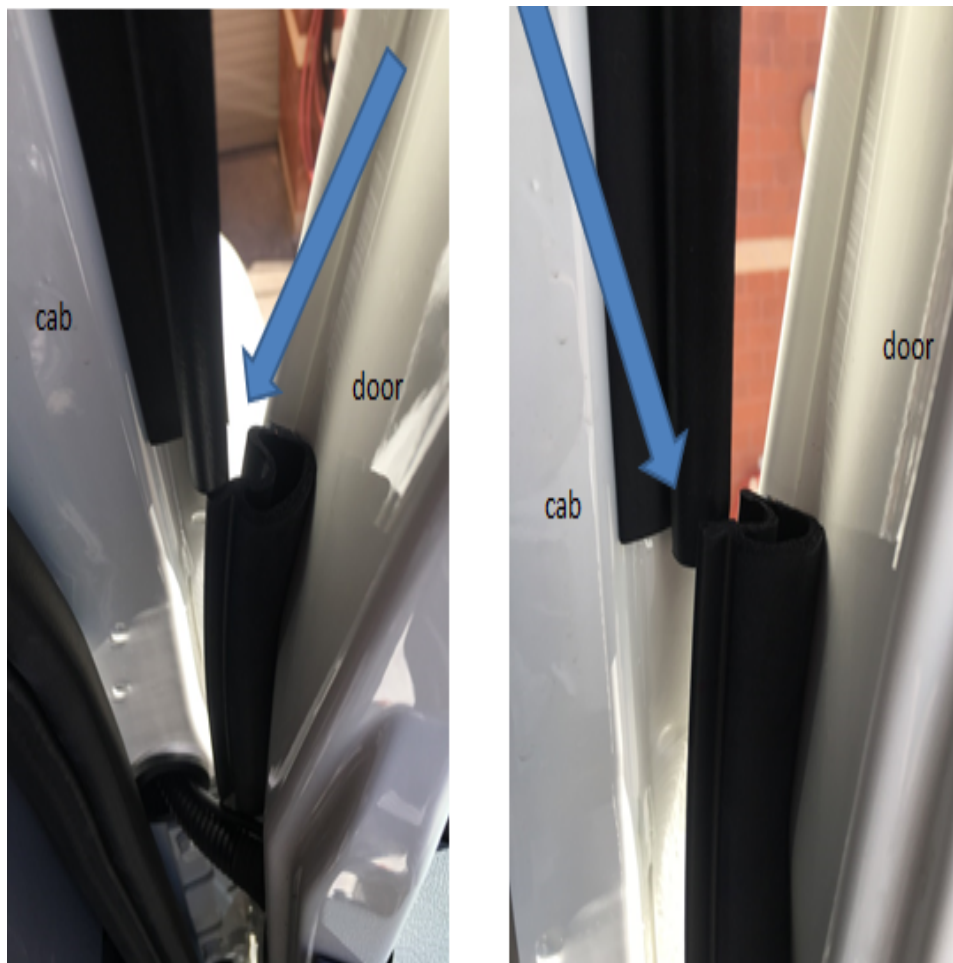


5. Make sure the tape is on the hem flange of the door.



Live UI

**6. The new seal should overlap the secondary seal approximately .5 inches as shown below.**



**7. Remove the backing on the tape and press the seal into position.**

**8. Total repair time including a second water test to verify there are no further leaks is approximately 90 minutes.**

## Related links and attachments

[Test for cab leaks](#)



## Feedback

[Give feedback](#)

to help improve the content of this article